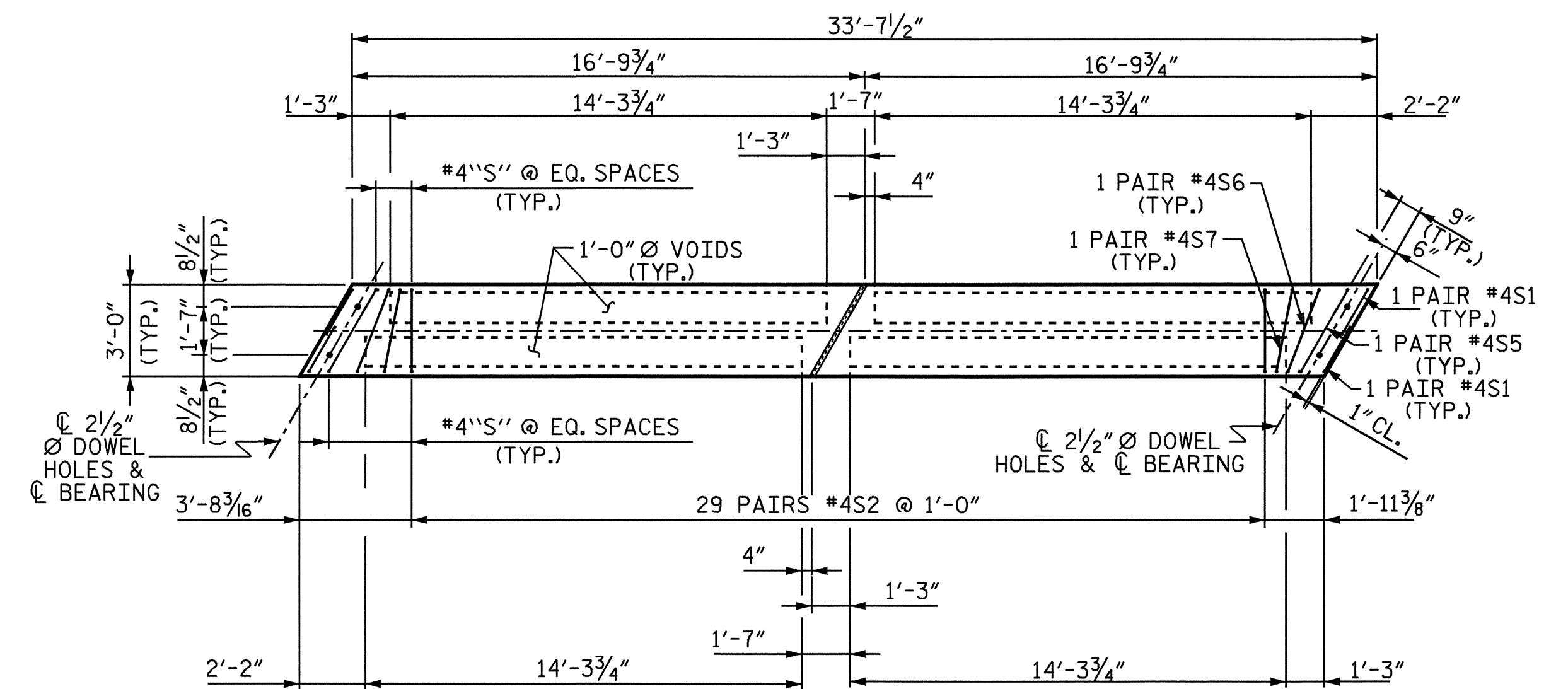
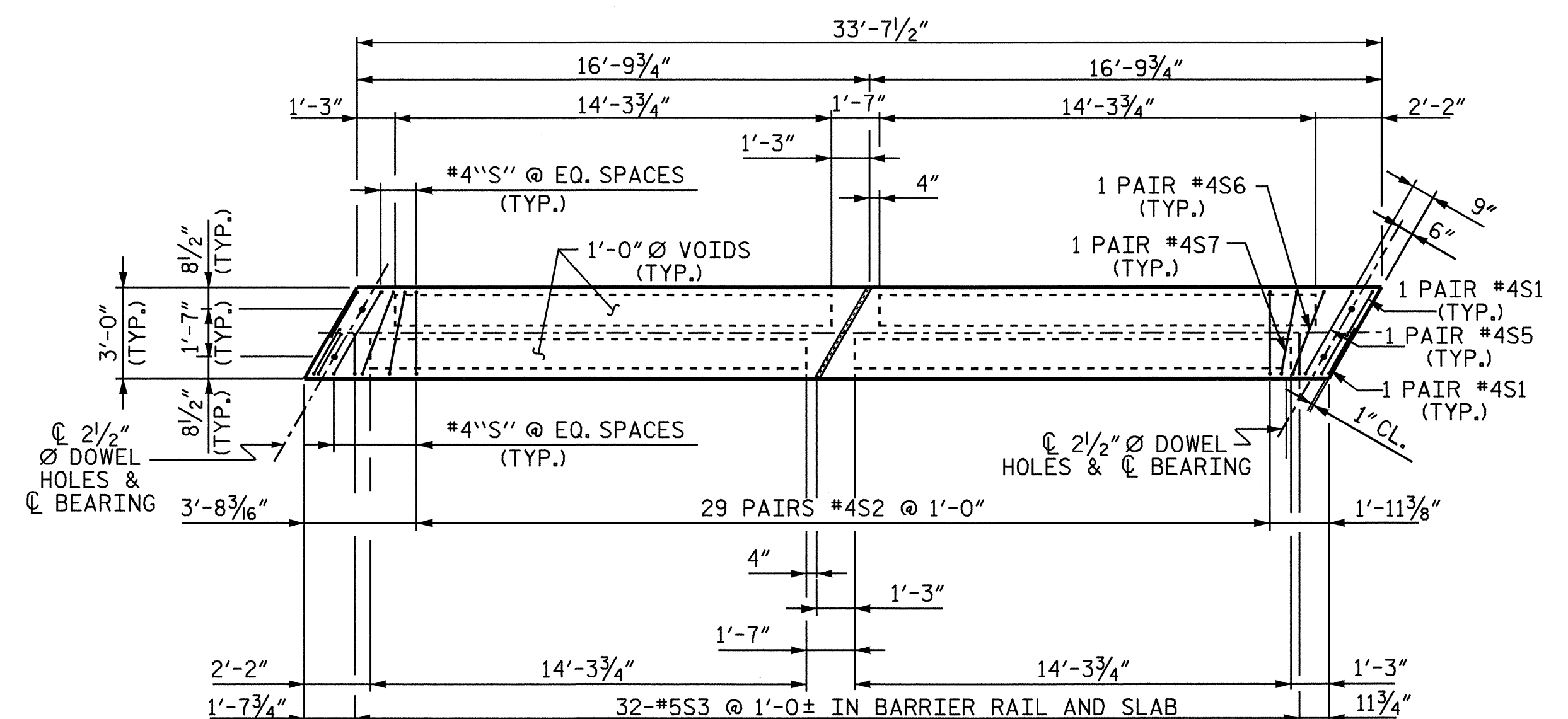


PLAN OF SPAN C



PLAN OF INTERIOR CORED SLAB UNIT



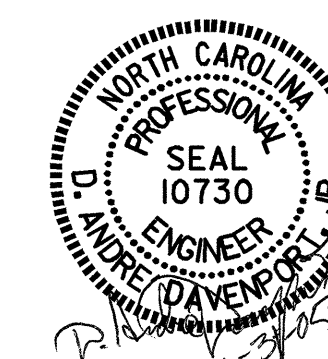
PLAN OF EXTERIOR CORED SLAB UNIT

PROJECT NO. B-4320
WAYNE/DUPLIN COUNTY
 STATION: 16+47.50-L-

SHEET 4 OF 5

STATE OF NORTH CAROLINA
 DEPARTMENT OF TRANSPORTATION
 RALEIGH

SUPERSTRUCTURE
 PLAN OF SPAN C



DRAWN BY: H. T. BARBOUR DATE: 3-15-04
 CHECKED BY: D. A. DAVENPORT DATE: 3-04

31-JAN-2005 14:48
 W:\squad1\BASIS\B-4320\tbarbour\Microstation\B-4320.sd.S*.01.dgn
 adavenport

REVISIONS						SHEET NO.
NO.	BY:	DATE:	NO.	BY:	DATE:	5-7
1			3			TOTAL SHEETS
2			4			22

STR.#1

NC006