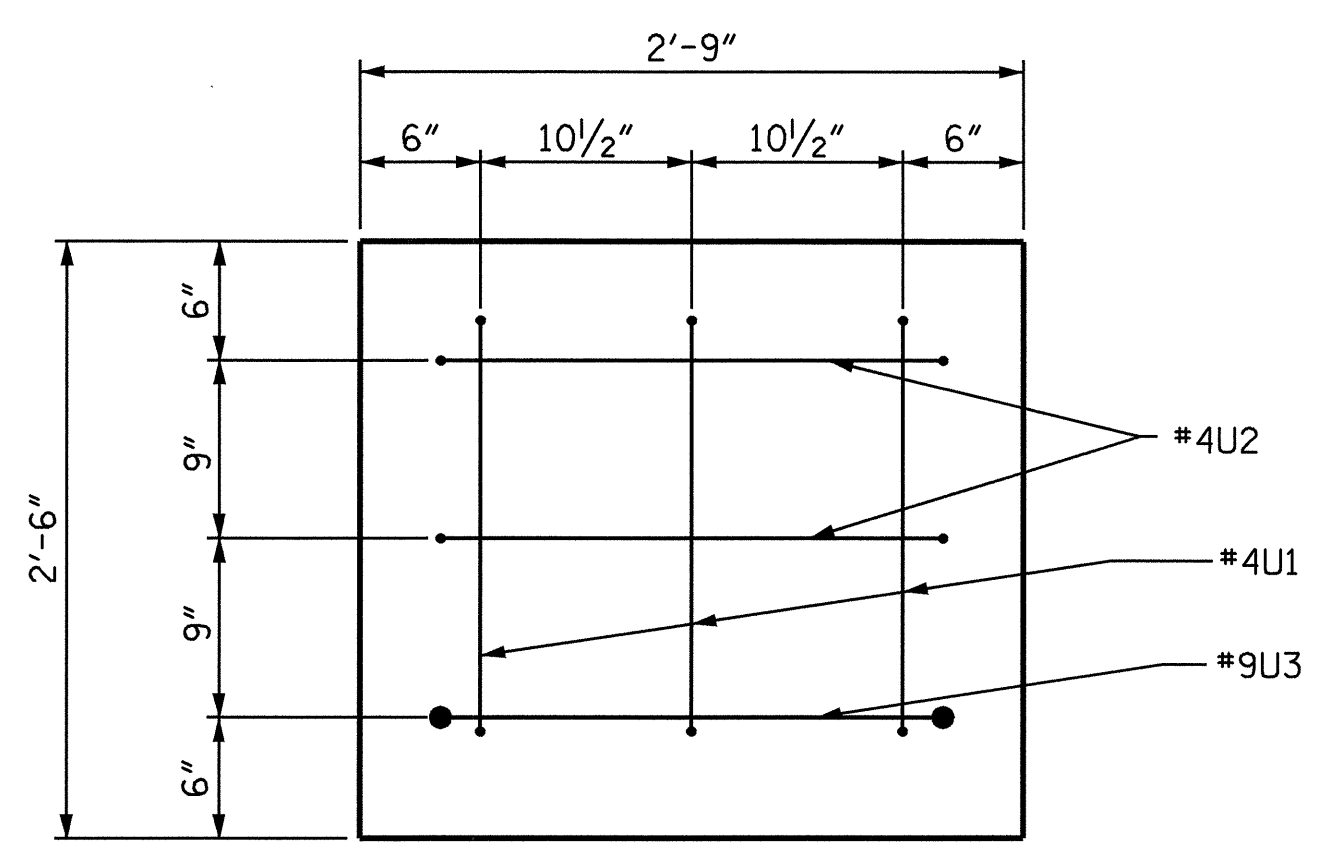


**SECTION A-A**

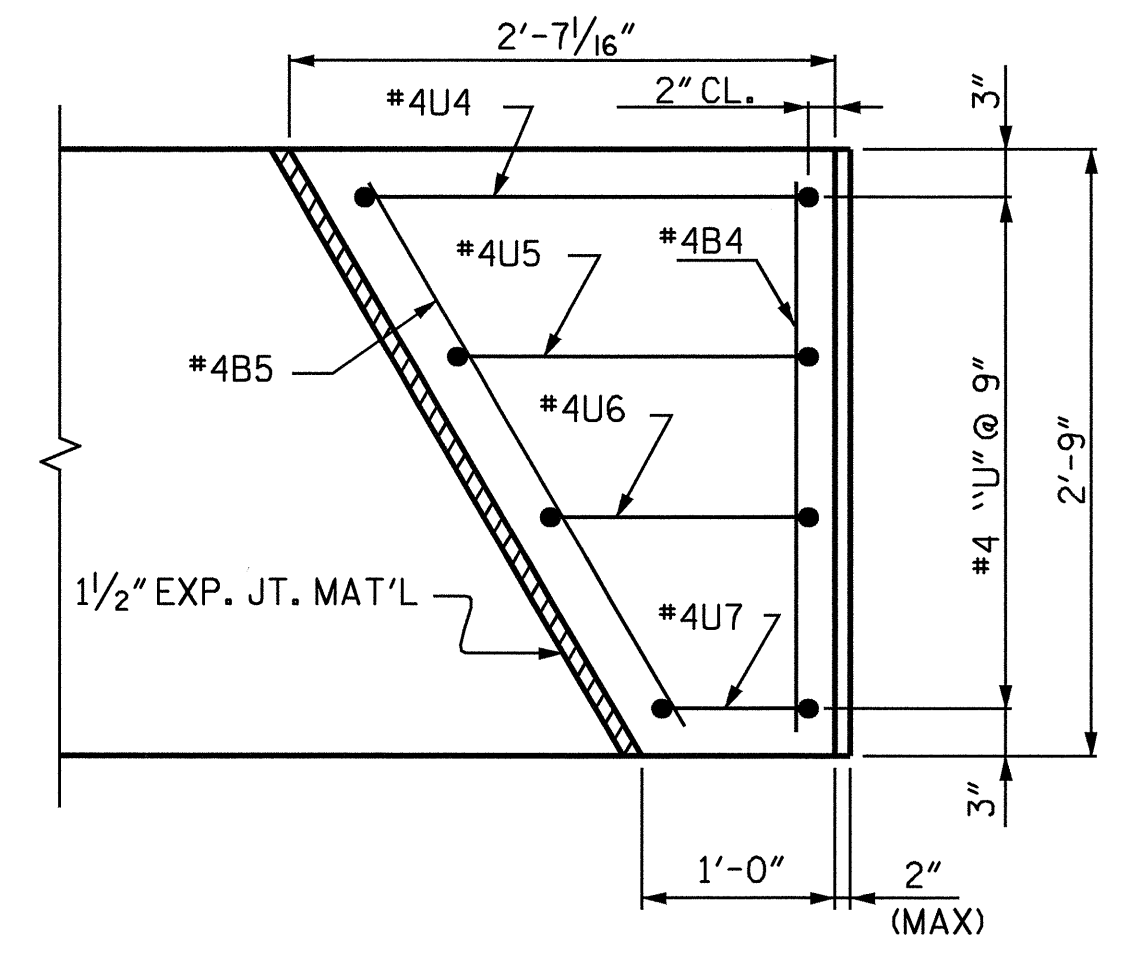


**END VIEW**

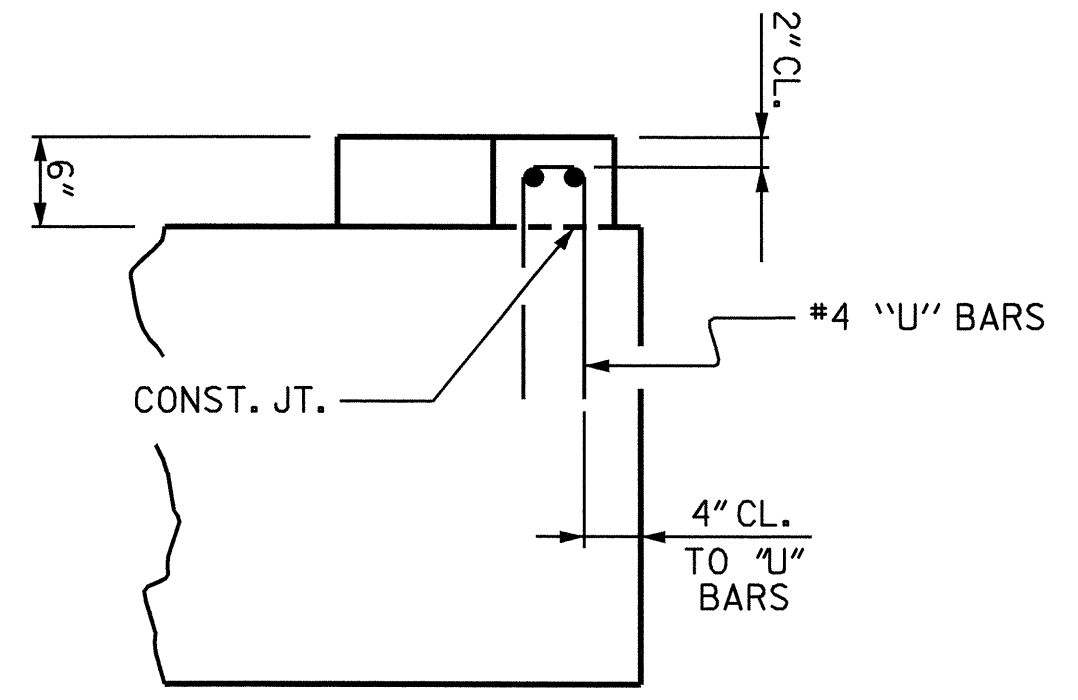
2" MIN. CONCRETE COVER FROM END OF CAP  
REQUIRED FOR ALL #4U1, #4U2 AND #9U3 BARS.  
#4U1, #4U2 AND #9U3 BARS MAY BE  
SHIFTED UP TO 2" TO CLEAR "B" BARS.

BAR TYPES		BILL OF MATERIAL				
BAR	NO.	SIZE	TYPE	LENGTH	WEIGHT	
B1	8	#9	1	47'-8"	1297	
B2	2	#5	STR	45'-4"	95	
B3	8	#4	STR	23'-11"	128	
B4	14	#4	STR	2'-5"	23	
B5	2	#4	STR	2'-9"	4	
D1	48	#6	STR	1'-6"	108	
S1	40	#5	2	3'-4"	139	
S2	40	#5	3	7'-7"	316	
S3	18	#4	4	7'-6"	90	
U1	6	#4	5	5'-0"	20	
U2	4	#4	5	5'-3"	14	
U3	2	#9	5	9'-7"	65	
U4	2	#4	5	5'-1"	7	
U5	2	#4	5	4'-8"	6	
U6	2	#4	5	4'-2"	6	
U7	2	#4	5	3'-9"	5	
REINFORCING STEEL					= 2323 LBS	
CLASS A CONCRETE						
POUR #1 CAP					CU. YDS. 11.6	
POUR #2 LATERAL GUIDE					CU. YDS. 0.1	
TOTAL					CU. YDS. 11.7	
HP 14 X 73 STEEL PILES						
NO. 9					LIN. FT. 450	

ALL BAR DIMENSIONS ARE OUT TO OUT.

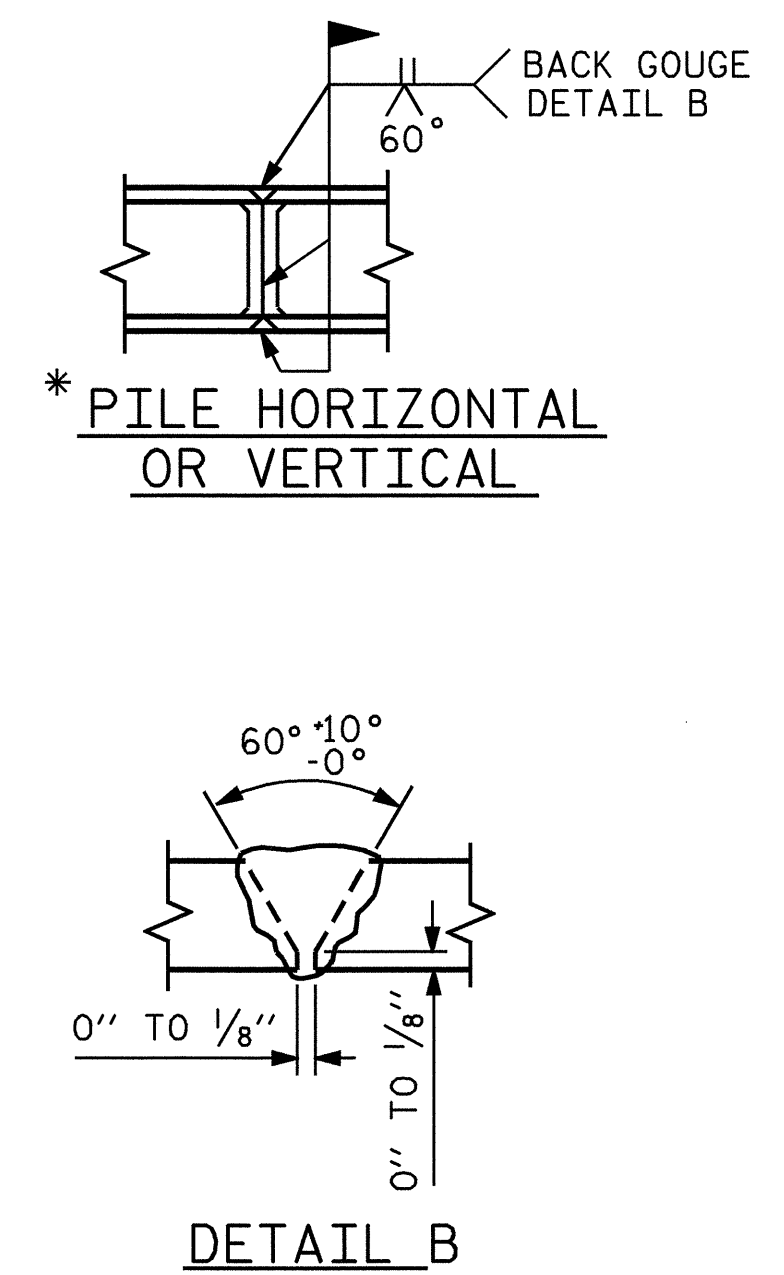
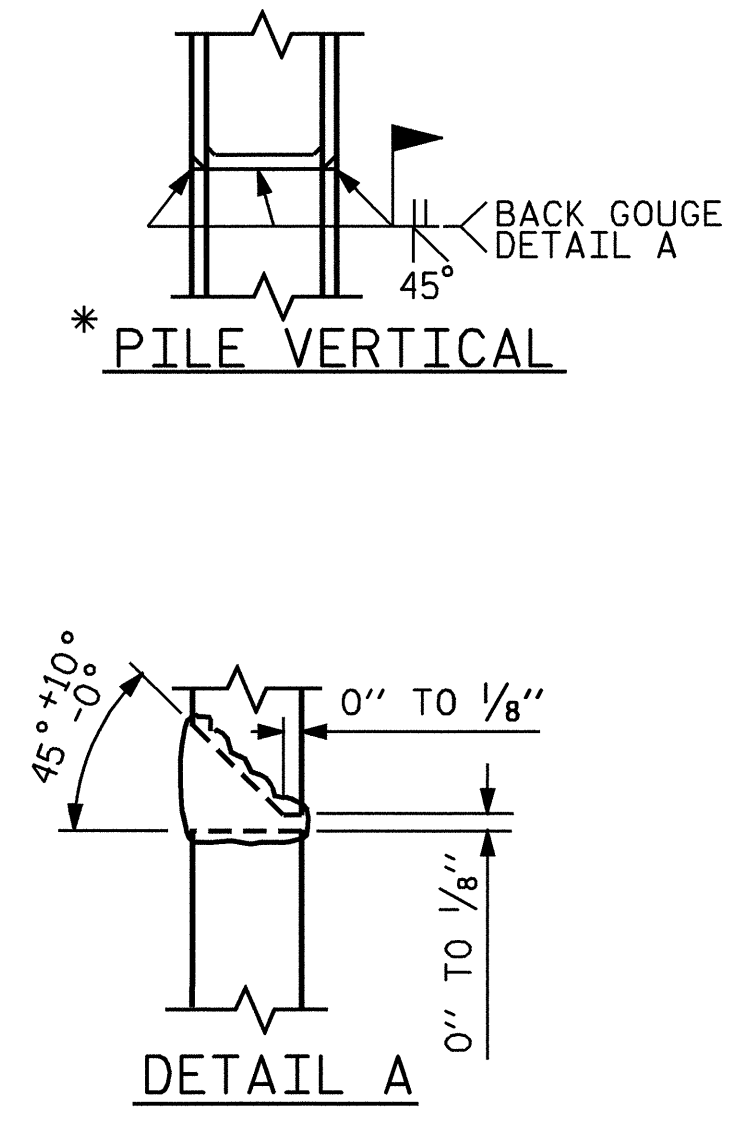


**PLAN**



**ELEVATION**

**LATERAL GUIDE DETAIL**



**PILE SPLICE DETAILS**

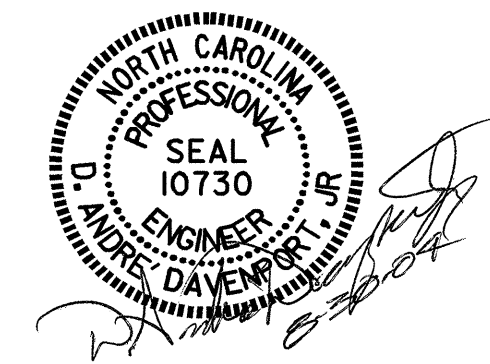
\* POSITION OF PILE DURING WELDING.

PROJECT NO. B-4320  
WAYNE/DUPLIN COUNTY  
STATION: 16+47.50 -L-

SHEET 2 OF 2

STATE OF NORTH CAROLINA  
DEPARTMENT OF TRANSPORTATION  
RALEIGH

**SUBSTRUCTURE BENT #1**



REVISIONS						TOTAL SHEETS
NO.	BY:	DATE:	NO.	BY:	DATE:	22
1			3			
2			4			

DRAWN BY: ADAM A. COLE DATE: 7/15/04  
CHECKED BY: SP LAM DATE: 8/04