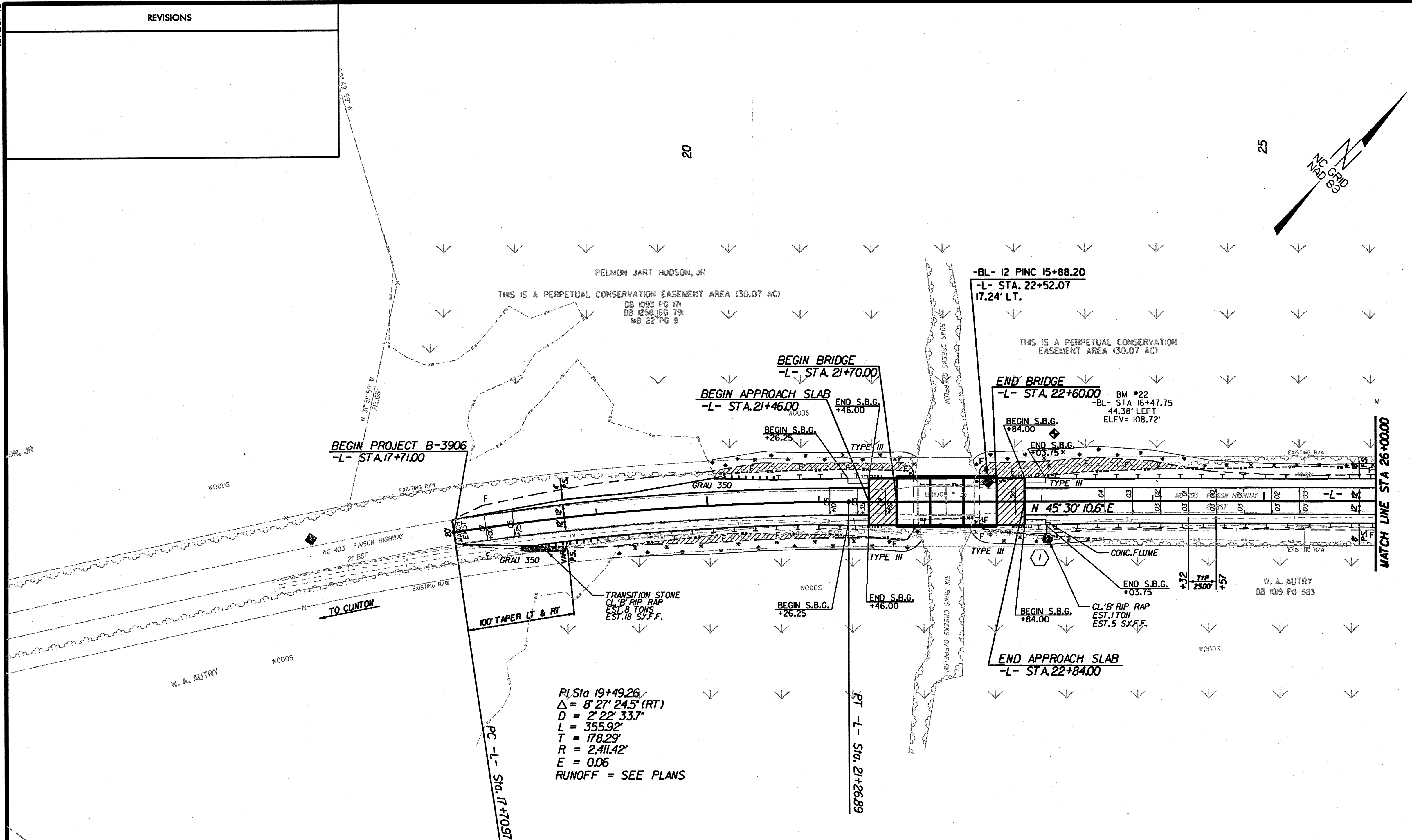


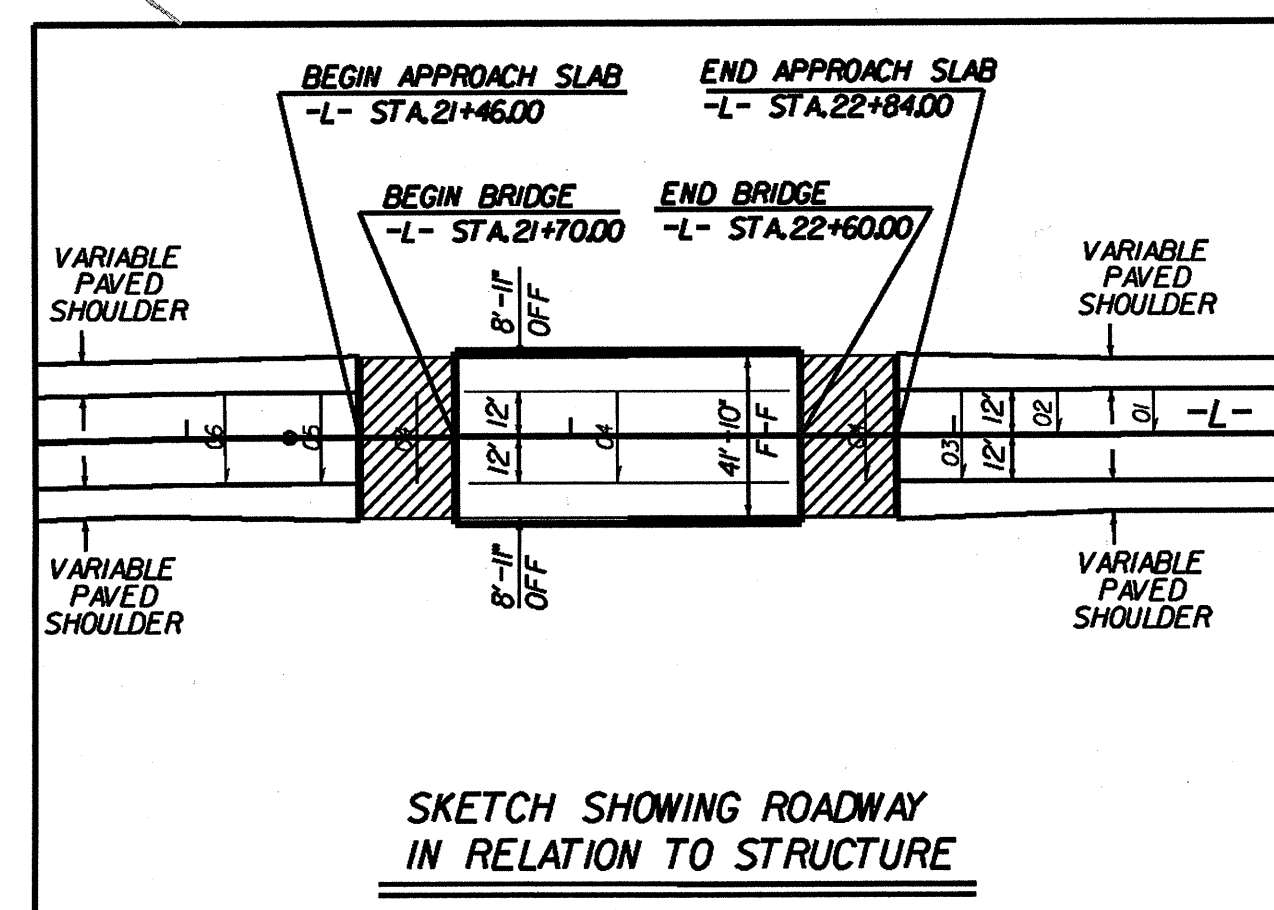
10/26/98

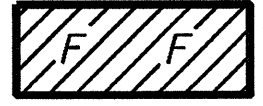
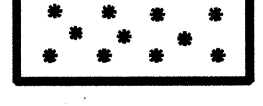
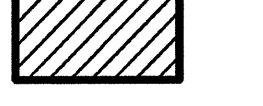
REVISIONS

PROJECT REFERENCE NO. B-3906	SHEET NO. 4
RW SHEET NO.	
ROADWAY DESIGN ENGINEER NORTH CAROLINA PROFESSIONAL SEAL 27771 M. B. COPPLE	HYDRAULICS ENGINEER NORTH CAROLINA PROFESSIONAL SEAL 18442 LEON BOLLING



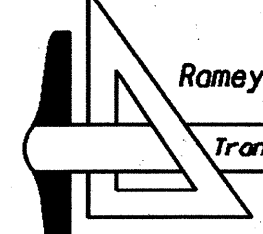
P/Sta 19+49.26
 $\Delta = 8^{\circ} 27' 24.5''$ (RT)
 $D = 2^{\circ} 22' 33.7''$
 $L = 355.92'$
 $T = 178.29'$
 $R = 2411.42'$
 $E = 0.06$
 RUNOFF = SEE PLANS



-  DENOTES FILL IN WETLANDS
-  DENOTES HAND CLEARING
-  DENOTES APPROACH SLAB
- SBG - DENOTES SHOULDER BERM GUTTER

FOR -L- PROFILE SEE SHEET NO.6

SEE SHEETS S-1 THRU S-4 FOR STRUCTURE PLANS



Romey Kemp & Associates, Inc.
Transportation Consulting Engineers
4328-A Windy Hill Drive Raleigh, North Carolina 27609
(919) 872-5465 Fax (919) 878-5465