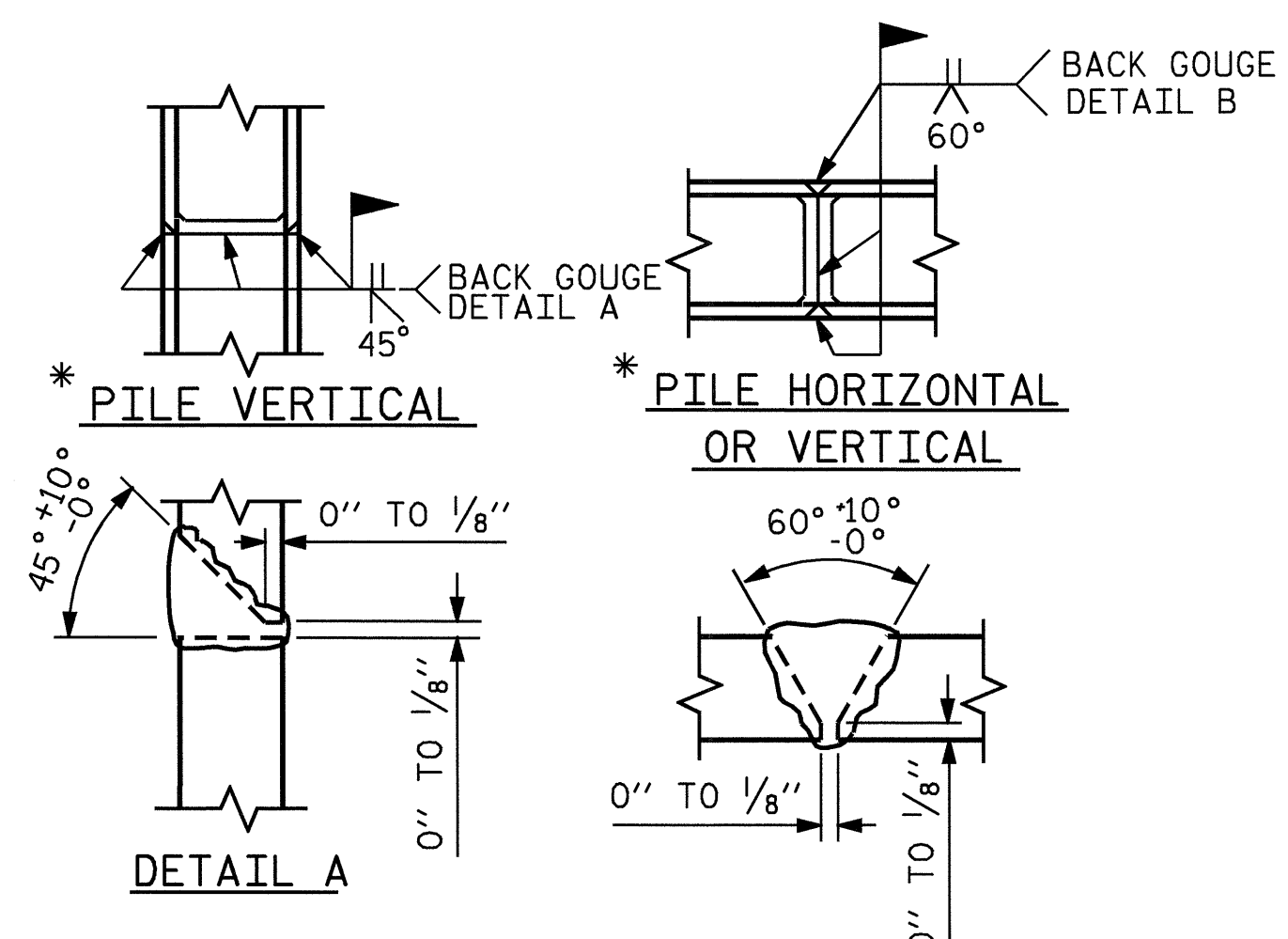
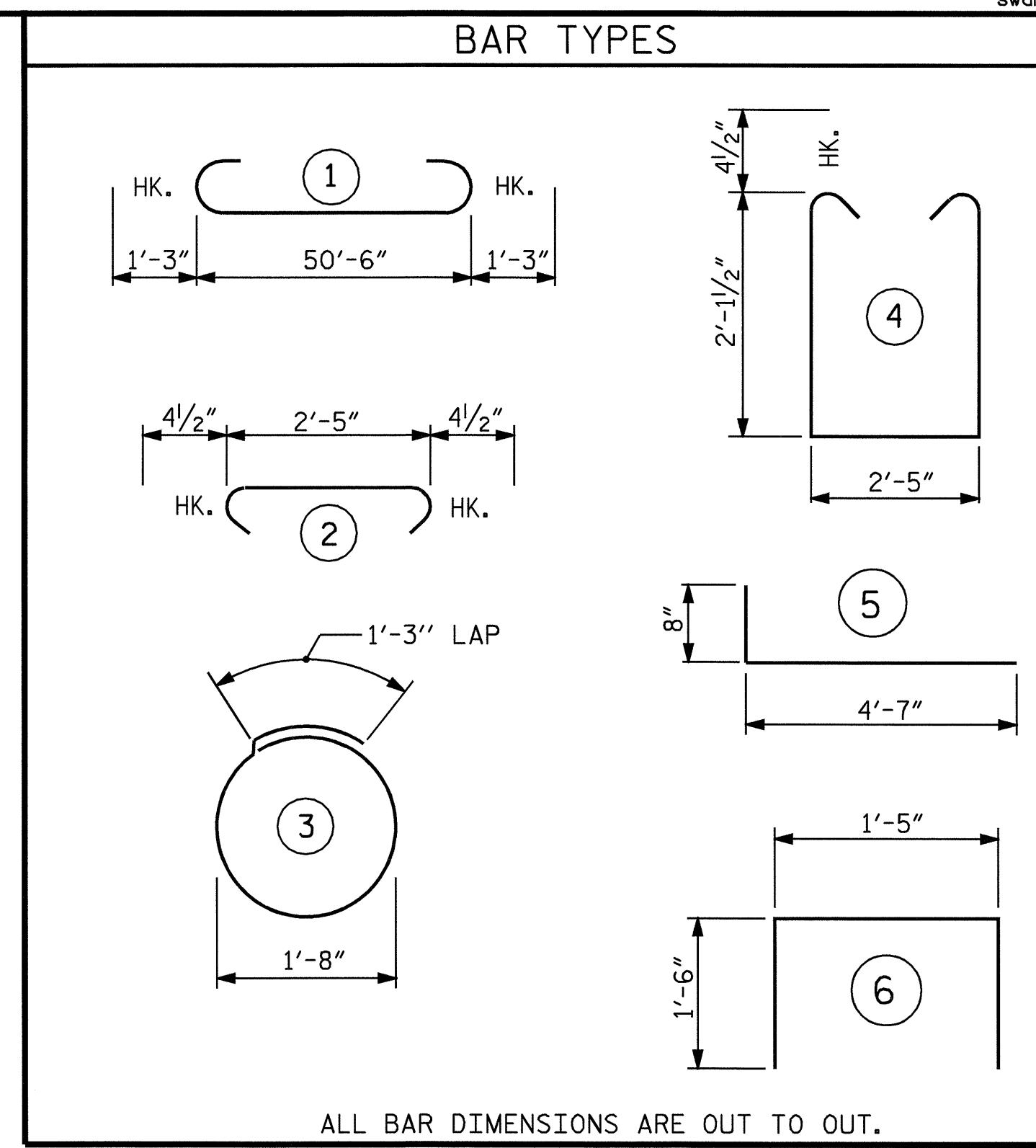


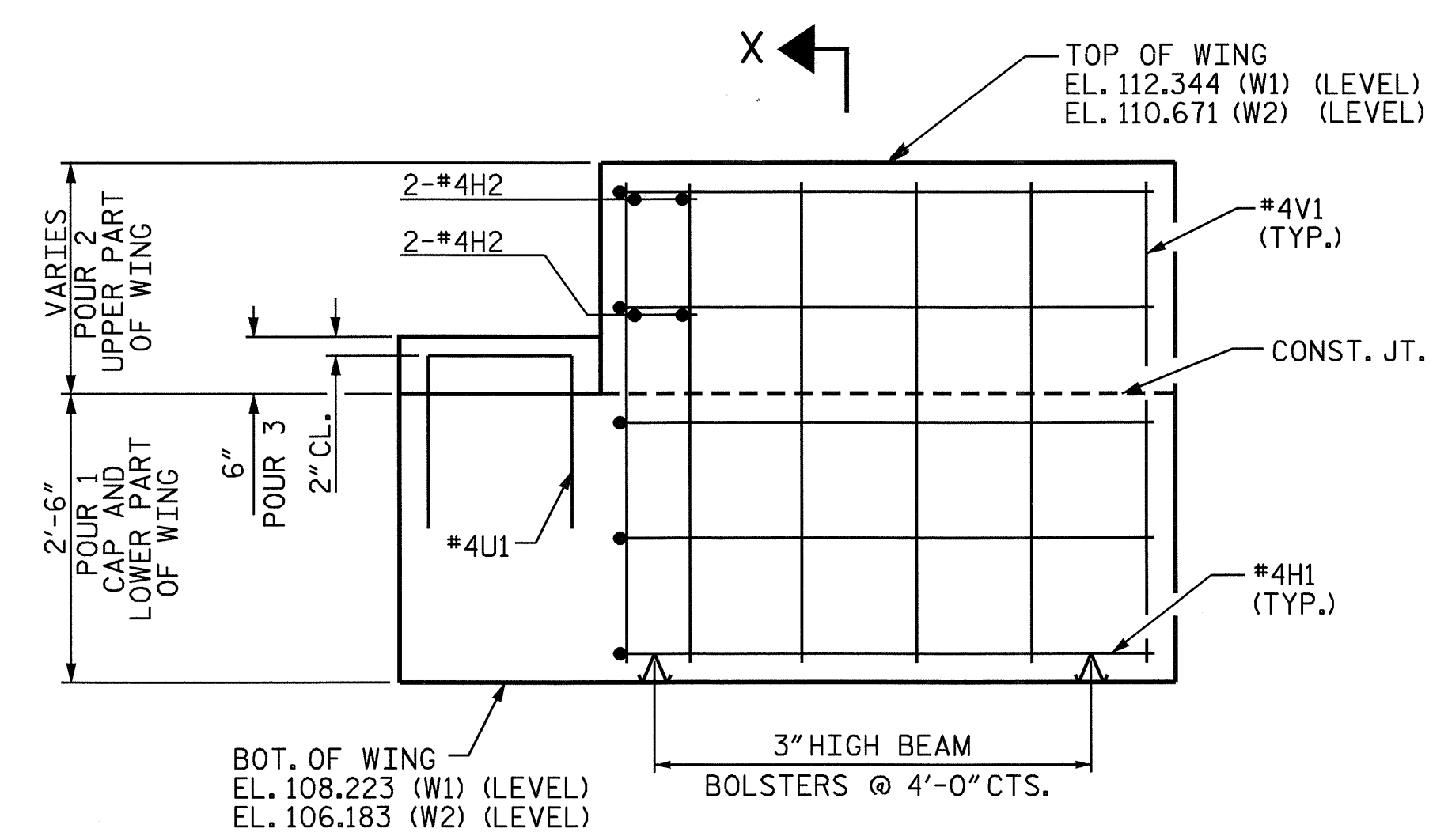
**PLAN OF WING-W1**  
WING W1 SHOWN, WING W2 SIMILAR



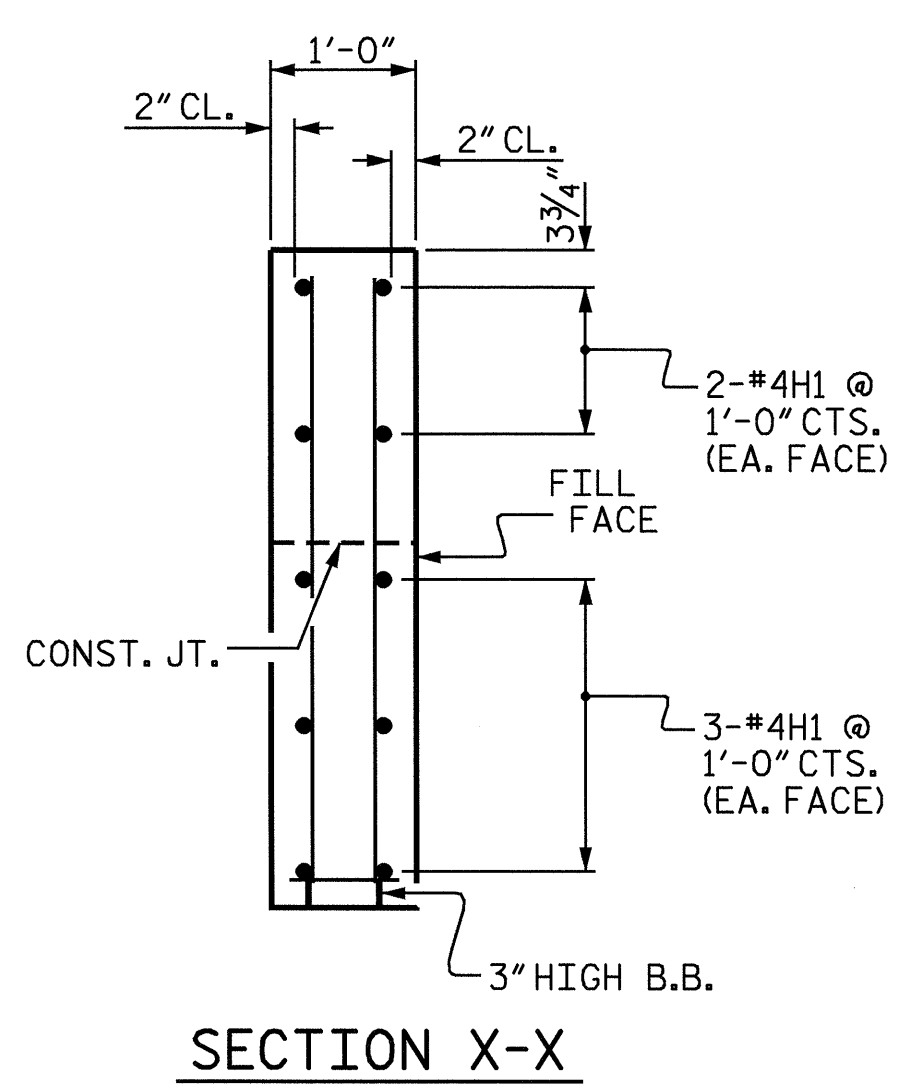
\* POSITION OF PILE DURING WELDING. **PILE SPLICE DETAILS**



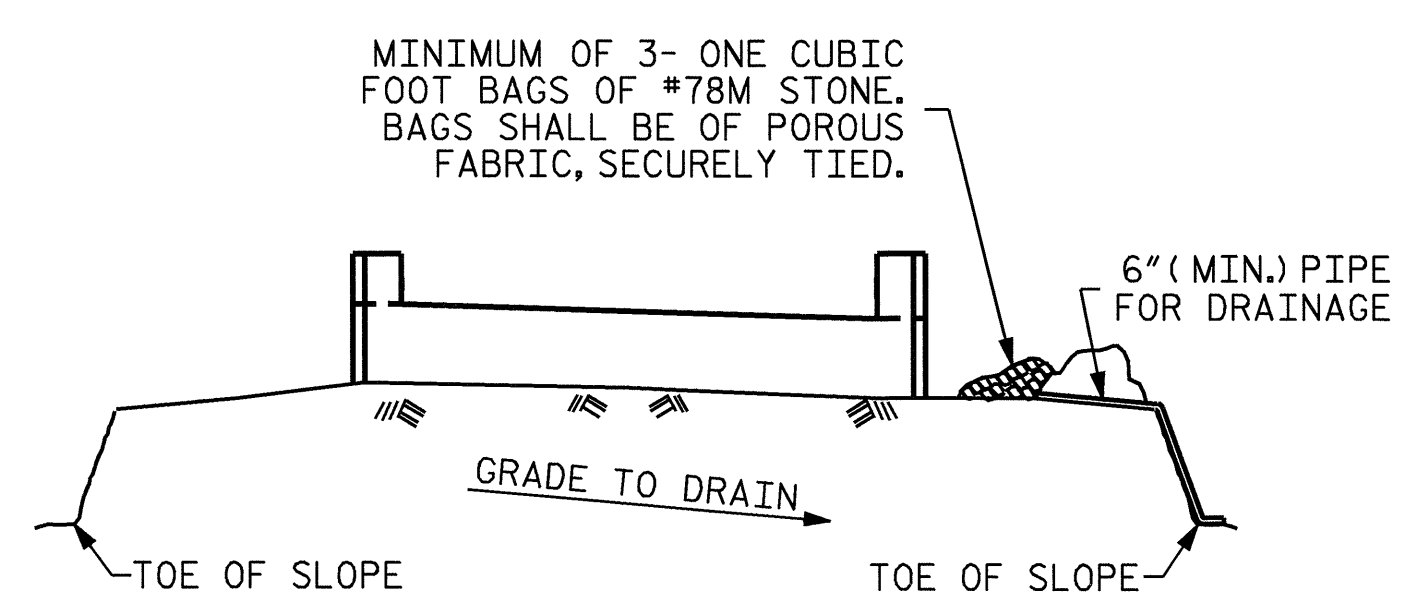
BILL OF MATERIAL					
BAR	NO.	SIZE	TYPE	LENGTH	WEIGHT
B1	8	9	1	53'-0"	1442
B2	2	5	STR	50'-6"	105
B3	8	4	STR	26'-6"	142
B4	13	4	STR	2'-5"	21
D1	30	6	STR	1'-6"	68
H1	20	4	5	5'-3"	70
H2	8	4	STR	2'-6"	13
S1	44	4	4	7'-5"	218
S2	44	4	2	3'-2"	93
S3	14	4	3	6'-6"	61
U1	4	4	6	4'-5"	12
V1	32	4	STR	3'-8"	78
REINFORCING STEEL					2323 LBS.
CLASS A CONCRETE BREAKDOWN					
POUR 1 - CAP AND LOWER PORTION OF WINGS					13.8 C.Y.
POUR 2 - UPPER PORTION OF WINGS					1.0 C.Y.
POUR 3 - LATERAL GUIDES					0.1 C.Y.
CLASS A CONCRETE TOTAL					14.9 C.Y.
HP 12 x 53 STEEL PILES					
NO. 7					385 LIN. FEET



**ELEVATION OF WING-W1**  
WING W1 SHOWN, WING W2 SIMILAR



**SECTION X-X**



BAGGED STONE AND PIPE SHALL BE PLACED IMMEDIATELY AFTER COMPLETION OF END BENT EXCAVATION. PIPE MAY BE EITHER CONCRETE, CORRUGATED STEEL, CORRUGATED ALUMINUM ALLOY, OR CORRUGATED PLASTIC. PERFORATED PIPE WILL NOT BE ALLOWED.

BAGGED STONE SHALL REMAIN IN PLACE UNTIL THE ENGINEER DIRECTS THAT IT BE REMOVED. THE CONTRACTOR SHALL REMOVE AND DISPOSE OF SILT ACCUMULATIONS AT BAGGED STONE WHEN SO DIRECTED BY THE ENGINEER. BAGS SHALL BE REMOVED AND REPLACED WHENEVER THE ENGINEER DETERMINES THAT THEY HAVE DETERIORATED AND LOST THEIR EFFECTIVENESS.

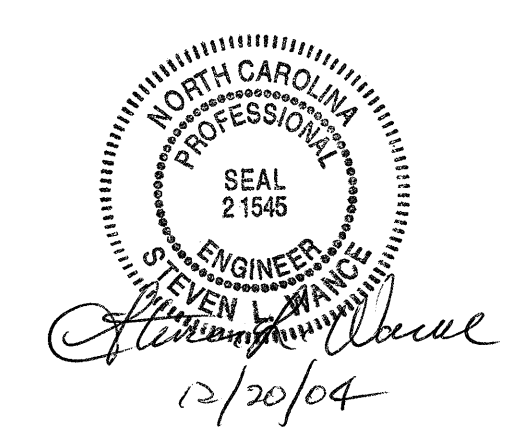
NO SEPARATE PAYMENT WILL BE MADE FOR THIS WORK AND THE ENTIRE COST OF THIS WORK SHALL BE INCLUDED IN THE UNIT CONTRACT PRICE BID FOR THE SEVERAL PAY ITEMS.

**TEMPORARY DRAINAGE AT END BENT**

PROJECT NO. **B-3906**  
**SAMPSON** COUNTY  
STATION: **22+15.00 -L-**

SHEET 2 OF 2

STATE OF NORTH CAROLINA DEPARTMENT OF TRANSPORTATION RALEIGH					
SUBSTRUCTURE END BENT 1					
REVISIONS					SHEET NO.
NO.	BY:	DATE:	NO.	BY:	DATE:
1			3		
2			4		
					5-11
					TOTAL SHEETS 30



DRAWN BY : SWANCEPE DATE : 06/04  
CHECKED BY : N.Q. TRAN DATE : 06/04