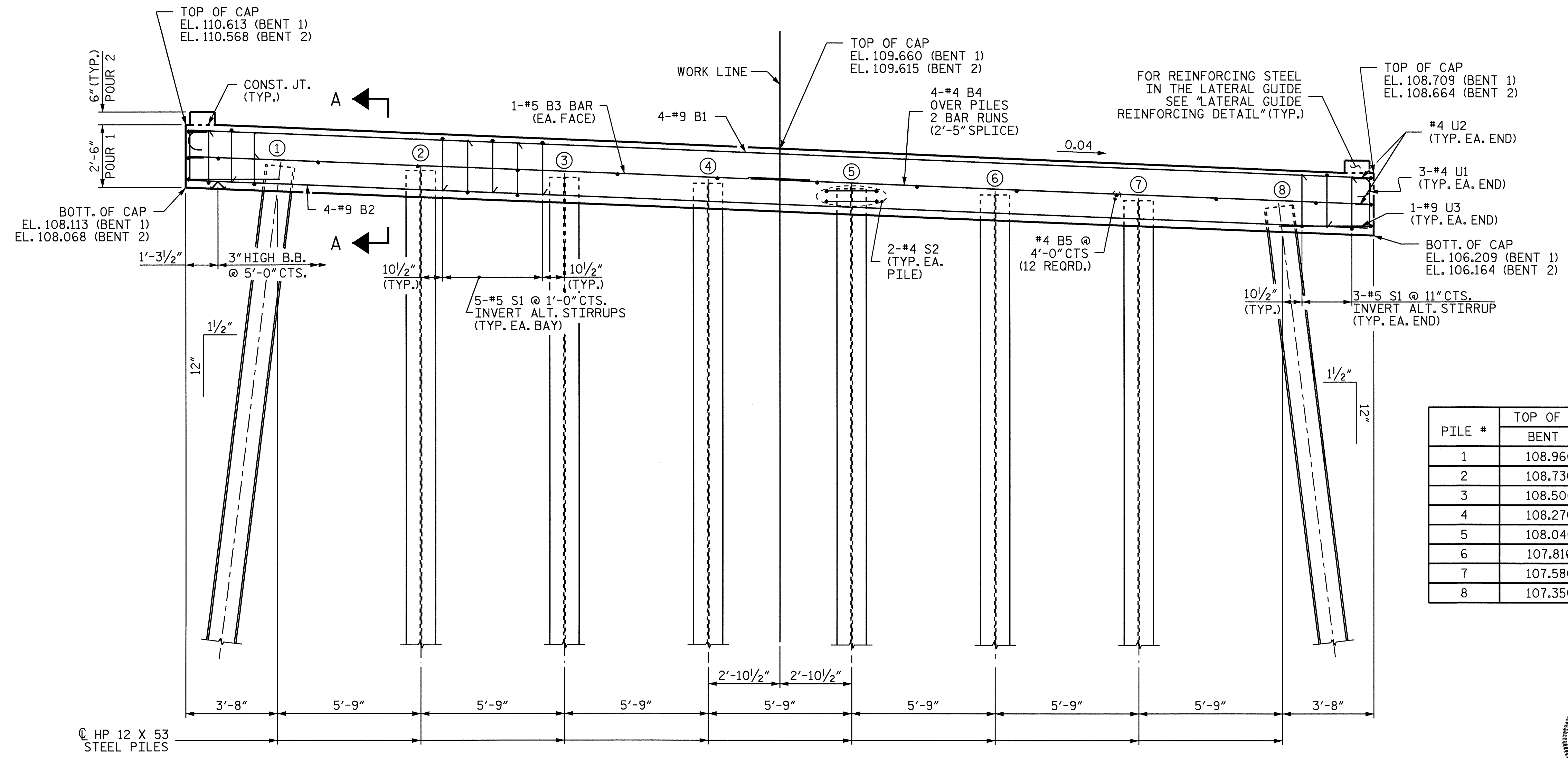
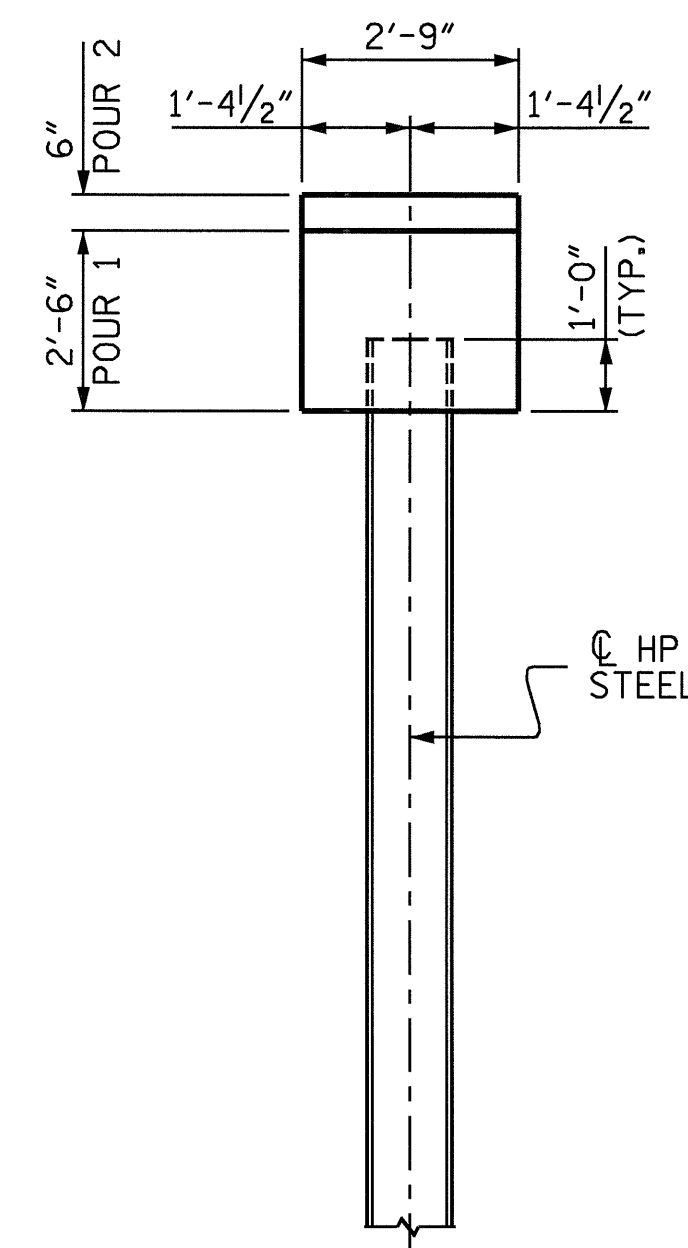
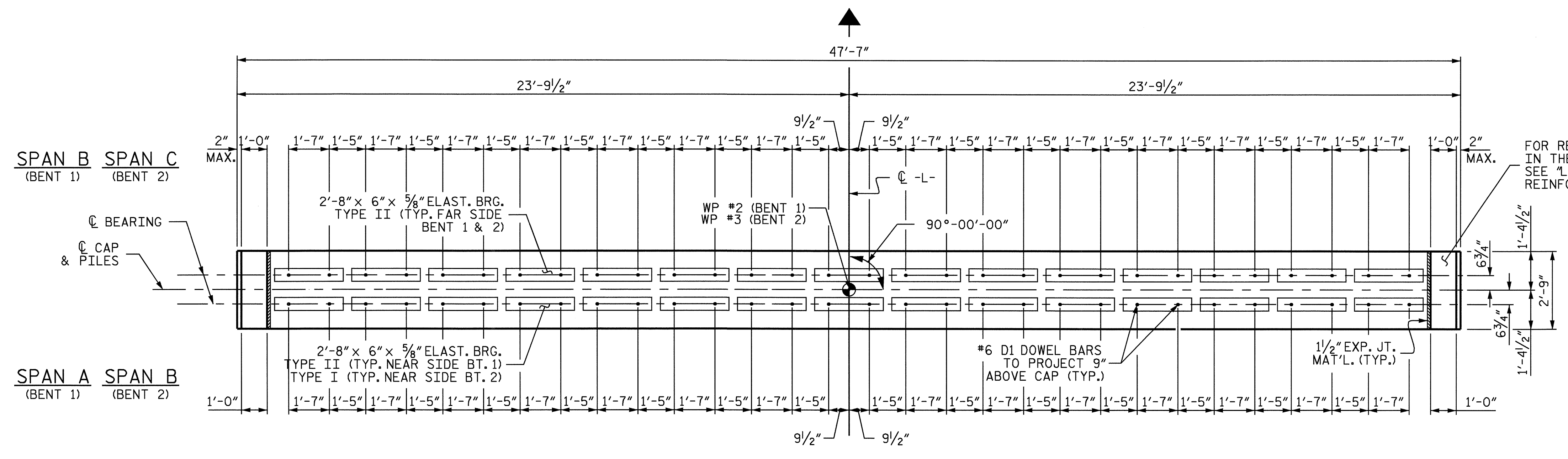


NOTES:

REINFORCING STEEL IN CAP MAY BE SHIFTED AS NECESSARY TO CLEAR DOWELS.

THE LATERAL GUIDE AT EACH END OF THE CAP IS NOT TO BE POURED UNTIL AFTER THE CORED SLAB UNITS ARE IN PLACE

THE STEEL PILES SHALL BE GALVINIZED IN ACCORDANCE WITH SECTION 1076 OF THE STANDARD SPECIFICATIONS. FOR GALVINIZING STEEL PILES, SEE SPECIAL PROVISIONS.



PILE #	TOP OF PILE ELEVATIONS	
	BENT 1	BENT 2
1	108.966	108.921
2	108.736	108.691
3	108.506	108.461
4	108.276	108.231
5	108.046	108.001
6	107.816	107.771
7	107.586	107.541
8	107.356	107.311

PROJECT NO. B-3906
SAMPSON COUNTY
 STATION: 22+15.00 -L-

SHEET 1 OF 2

STATE OF NORTH CAROLINA
 DEPARTMENT OF TRANSPORTATION
 RALEIGH

SUBSTRUCTURE
 BENTS 1 & 2



DRAWN BY: W.K. FISCHER DATE: 6/4/04
 CHECKED BY: S. WANCE DATE: 6/11/04

REVISIONS						SHEET NO. 5-12
NO.	BY:	DATE:	NO.	BY:	DATE:	
1			3			TOTAL SHEETS 38
2			4			