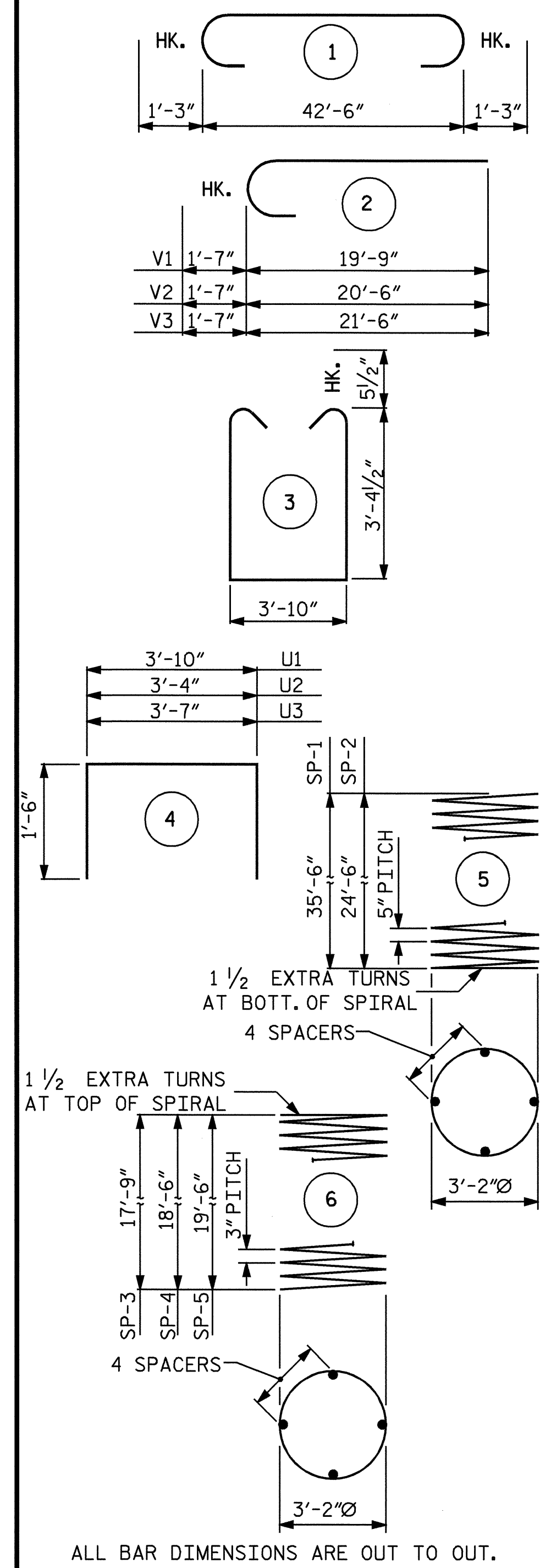


**PLAN OF DRILLED PIERS & COLUMNS**

REINFORCING STEEL AND DIMENSIONS ARE TYPICAL FOR DRILLED PIERS & COLUMNS

**NOTES:**  
 STIRRUPS AND "U" BARS IN CAP MAY BE SHIFTED AS NECESSARY TO CLEAR ANCHOR BOLTS.  
 HOOKS ON "V" BARS MAY BE TURNED AS NECESSARY FOR PLACING REINFORCING STEEL.  
 FOR DRILLED PIERS, SEE SPECIAL PROVISIONS.  
 ALL STEEL IN THE DRILLED PIERS IS INCLUDED IN THE PAY ITEMS FOR "REINFORCING STEEL" AND "SPIRAL COLUMN REINFORCING STEEL".  
 THE CONTRACTOR'S ATTENTION IS CALLED TO THE FACT THAT THE LONGITUDINAL REINFORCEMENT FOR THE DRILLED PIERS IS DETAILED WITH 3 FEET OF EXTRA LENGTH.  
 THE LOCATION OF THE CONSTRUCTION JOINT IN THE DRILLED PIERS IS BASED ON AN APPROXIMATE GROUND LINE ELEVATION. IF THE CONSTRUCTION JOINT IS ABOVE THE ACTUAL GROUND LINE ELEVATION, THE CONTRACTOR SHALL PLACE THE CONSTRUCTION JOINT 1 FT. BELOW THE GROUND LINE.  
 FOR PERMANENT STEEL CASING, SEE DRILLED PIER SPECIAL PROVISION.

**BAR TYPES**



**BILL OF MATERIAL**

**BENT No. 1**

BAR NO.	SIZE	TYPE	LENGTH	WEIGHT	
B1	14	9	1	45'-0"	2142
B2	6	5	STR.	42'-8"	267
B3	35	4	STR.	3'-11"	92
B4	7	4	STR.	4'-5"	21
S1	44	5	3	11'-6"	528
U1	42	4	4	6'-10"	192
U2	4	4	4	6'-4"	17
U3	10	4	4	6'-7"	44
M1	24	11	STR.	45'-11"	5855
M2	12	11	STR.	34'-11"	2226
V1	12	11	2	21'-4"	1360
V2	12	11	2	22'-1"	1408
V3	12	11	2	23'-1"	1472
REINFORCING STEEL				LBS.	15,264
SP-1	2	**	5	852'-1"	1777
SP-2	1	**	5	597'-5"	623
SP-3	1	*	6	716'-11"	479
SP-4	1	*	6	746'-5"	499
SP-5	1	*	6	785'-8"	525
SPIRAL COLUMN REINFORCING STEEL				LBS.	3903

\* THE SP-3, SP-4, & SP-5 SPIRAL REINFORCING STEEL SHALL BE W20 OR D-20 COLD DRAWN WIRE OR #4 PLAIN OR DEFORMED BAR.  
 \*\* THE SP-1 OR SP-2 SPIRAL REINFORCING STEEL SHALL BE W31 OR D-31 COLD DRAWN WIRE OR #5 PLAIN OR DEFORMED BAR.

**CLASS A CONCRETE BREAKDOWN :**

POUR #2 (COLUMNS)	19.6 C. Y.
POUR #3 (CAP)	26.3 C. Y.
<b>TOTAL</b>	<b>45.9 C. Y.</b>

**4'-0" DRILLED PIER QUANTITIES**

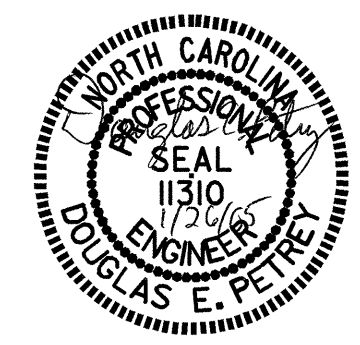
DRILLED PIER CONCRETE POUR #1 (DRILLED PIERS)	45.1 C. Y.
4'-0" DRILLED PIERS NOT IN SOIL	17.5 LIN. FT.
4'-0" DRILLED PIERS IN SOIL	79.5 LIN. FT.

CSL TUBES	418 LIN. FT.
PERMANENT STEEL CASING	50.7 LIN. FT.

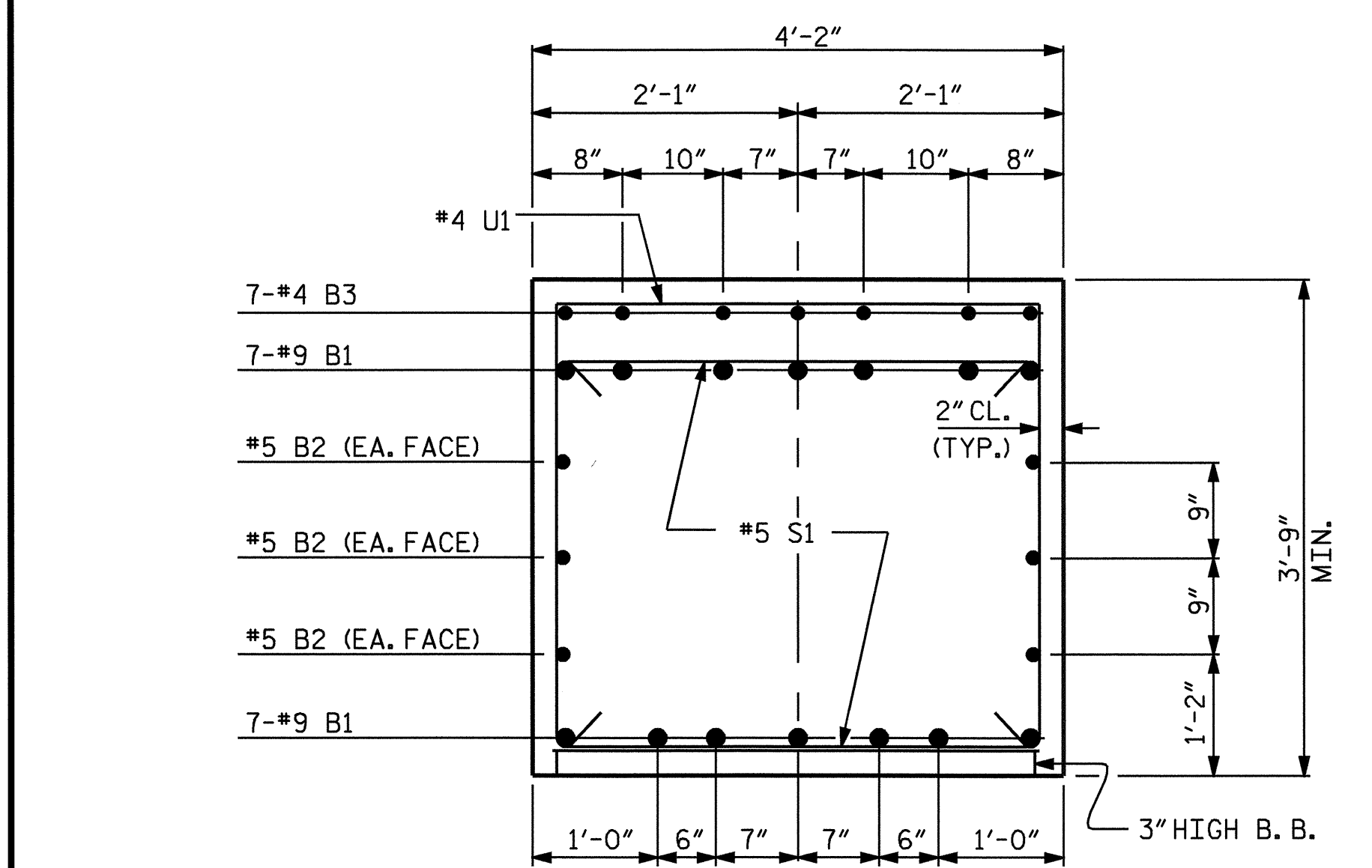
PROJECT NO. B-3694  
 ROCKINGHAM COUNTY  
 STATION: 17+27.50 -L-

SHEET 2 OF 2

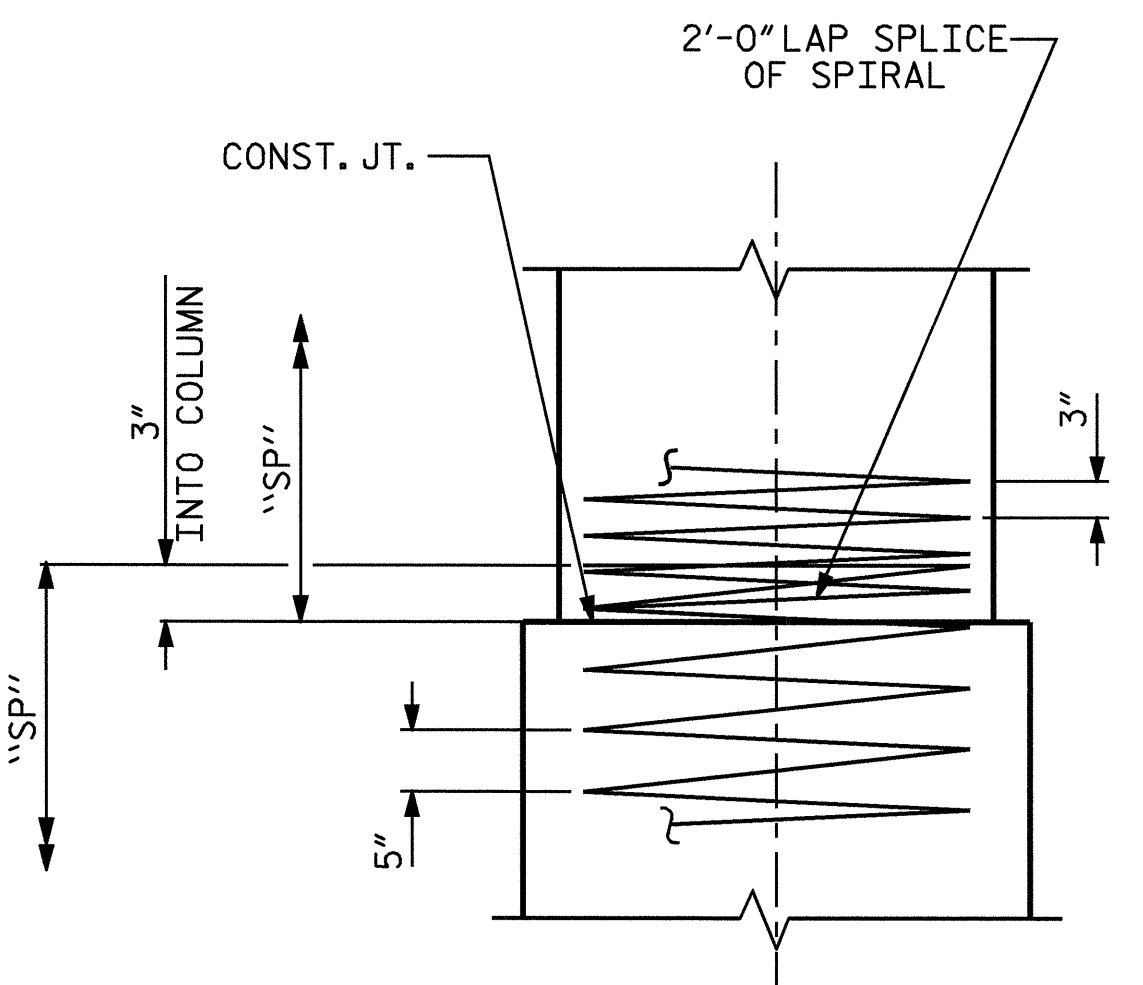
STATE OF NORTH CAROLINA  
 DEPARTMENT OF TRANSPORTATION  
 RALEIGH  
 SUBSTRUCTURE  
 BENT No. 1



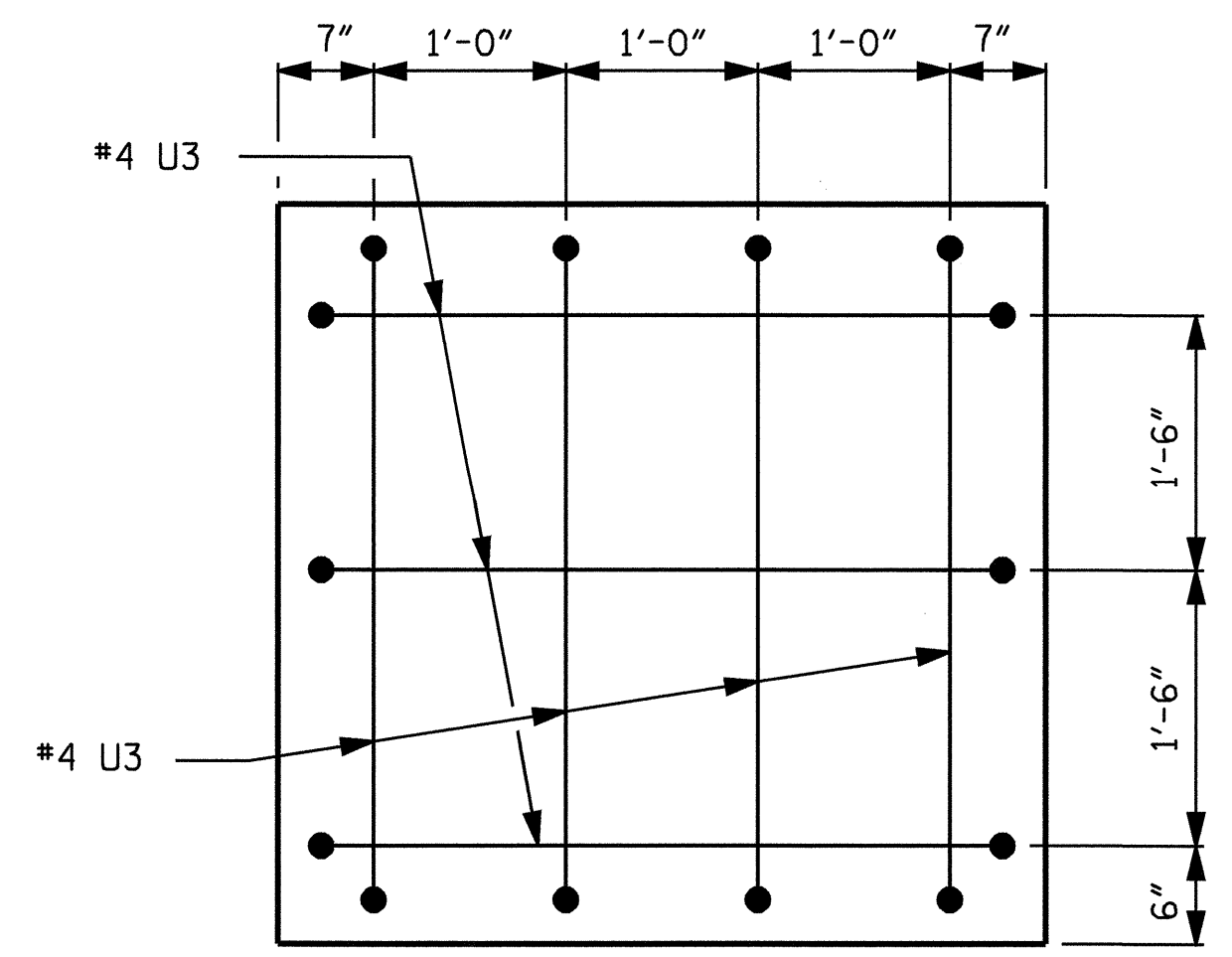
REVISIONS						SHEET NO. S-22
NO.	BY:	DATE:	NO.	BY:	DATE:	
1			3			TOTAL SHEETS 36
2			4			



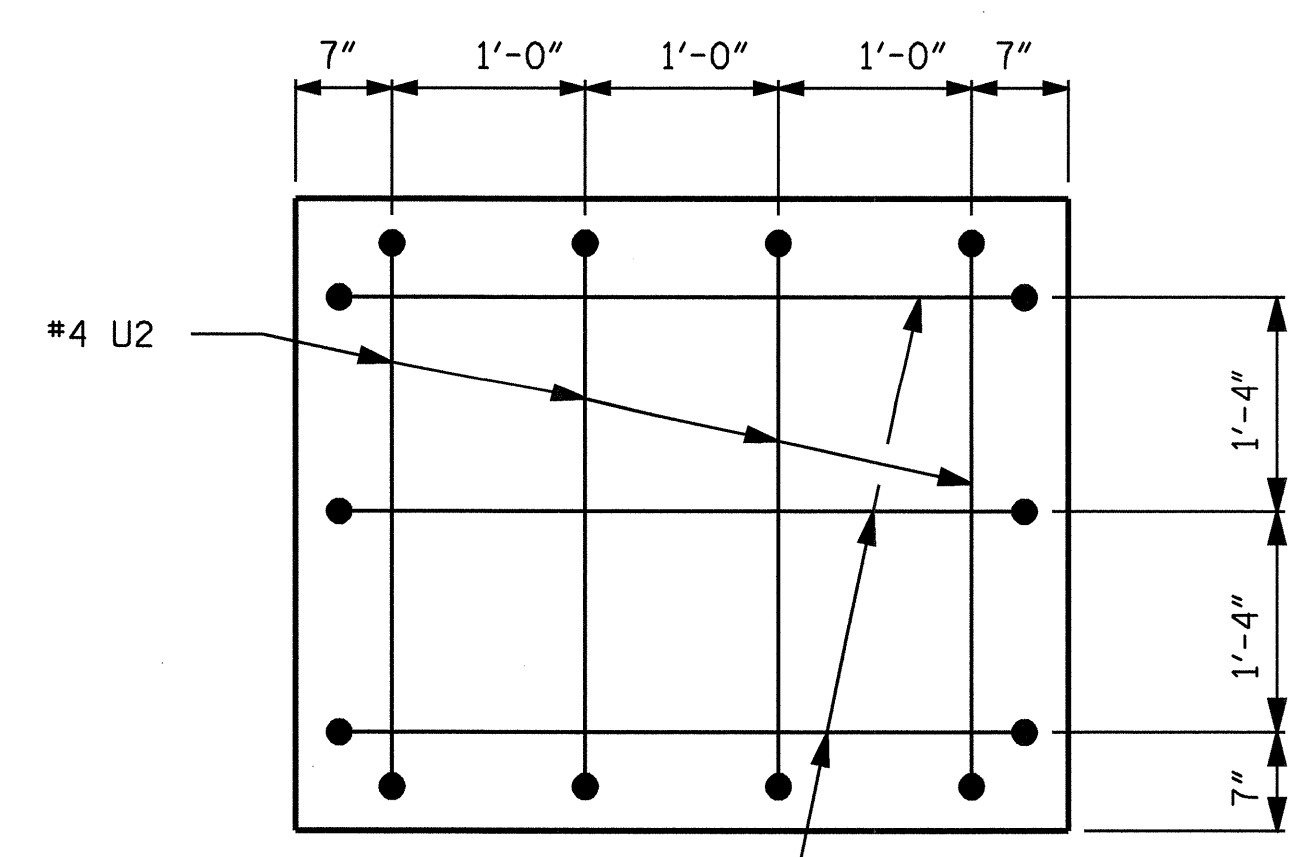
**SECTION A-A**



**CONSTRUCTION JOINT DETAIL**



**VIEW X-X**



**VIEW Y-Y**

DRAWN BY : R. G. EMERSON DATE : 09/04  
 CHECKED BY : A. R. CHESSON DATE : 01/05