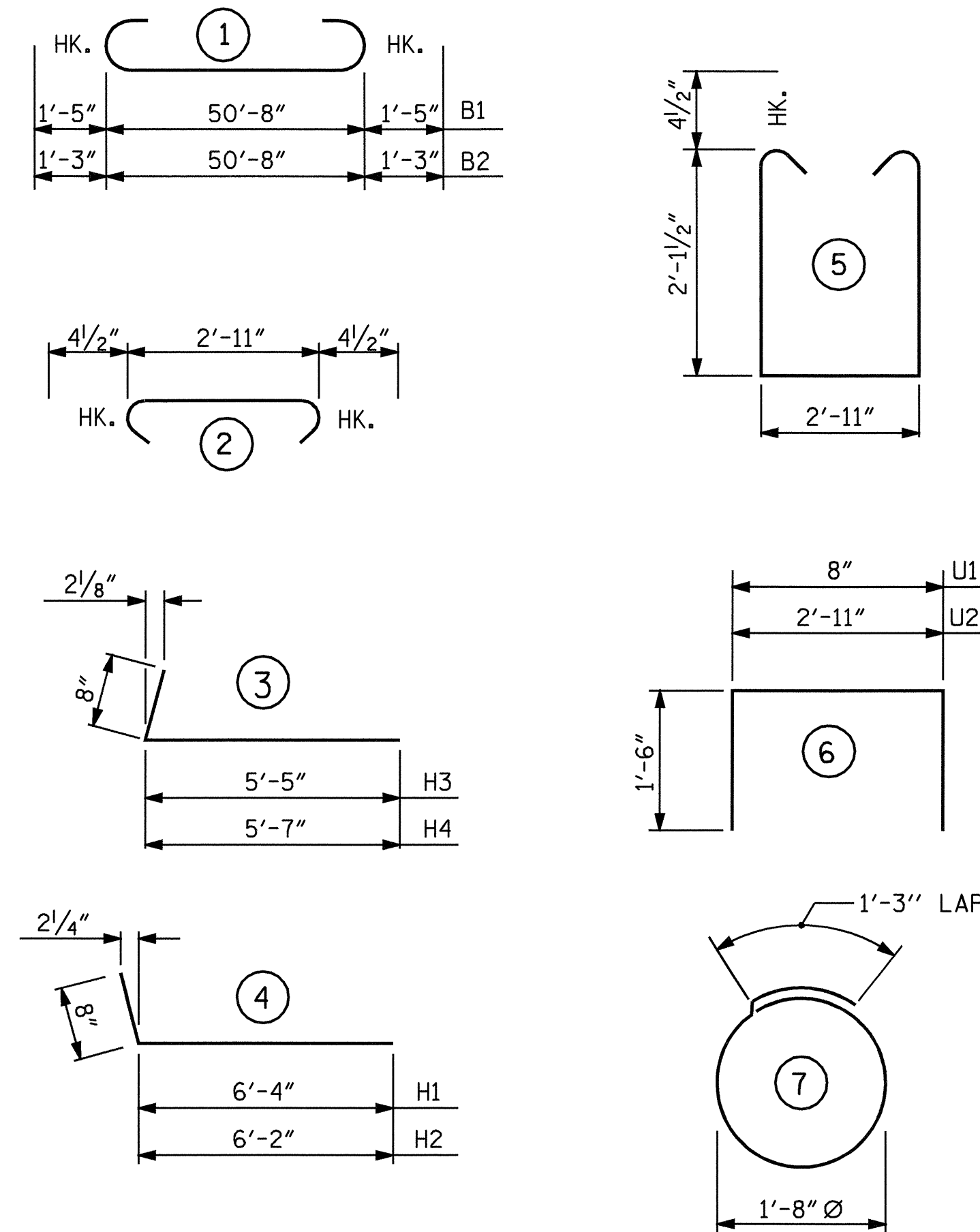


**BAR TYPES**

BAR DIMENSIONS ARE OUT TO OUT.



**BILL OF MATERIAL**

**END BENT No. 2**

BAR	NO.	SIZE	TYPE	LENGTH	WEIGHT
B1	4	#10	1	53'-6"	921
B2	5	#9	1	53'-2"	904
B3	4	#5	STR	50'-10"	212
B4	8	#4	STR	26'-8"	143
B5	5	#4	STR	7'-6"	25
B6	25	#4	STR	3'-0"	50
B7	13	#4	STR	2'-11"	25
H1	10	#4	4	7'-0"	47
H2	10	#4	4	6'-10"	46
H3	9	#4	3	6'-1"	37
H4	9	#4	3	6'-3"	38
K1	16	#4	STR	26'-8"	285
K2	8	#4	STR	2'-9"	15
S1	50	#4	2	3'-8"	122
S2	50	#4	5	7'-11"	264
S3	18	#4	7	6'-6"	78
U1	45	#4	6	3'-8"	110
U2	26	#4	6	5'-11"	103
V1	90	#4	STR	6'-1"	366
V2	20	#4	STR	7'-9"	104
V3	18	#4	STR	7'-2"	86

REINFORCING STEEL = 3981 LBS

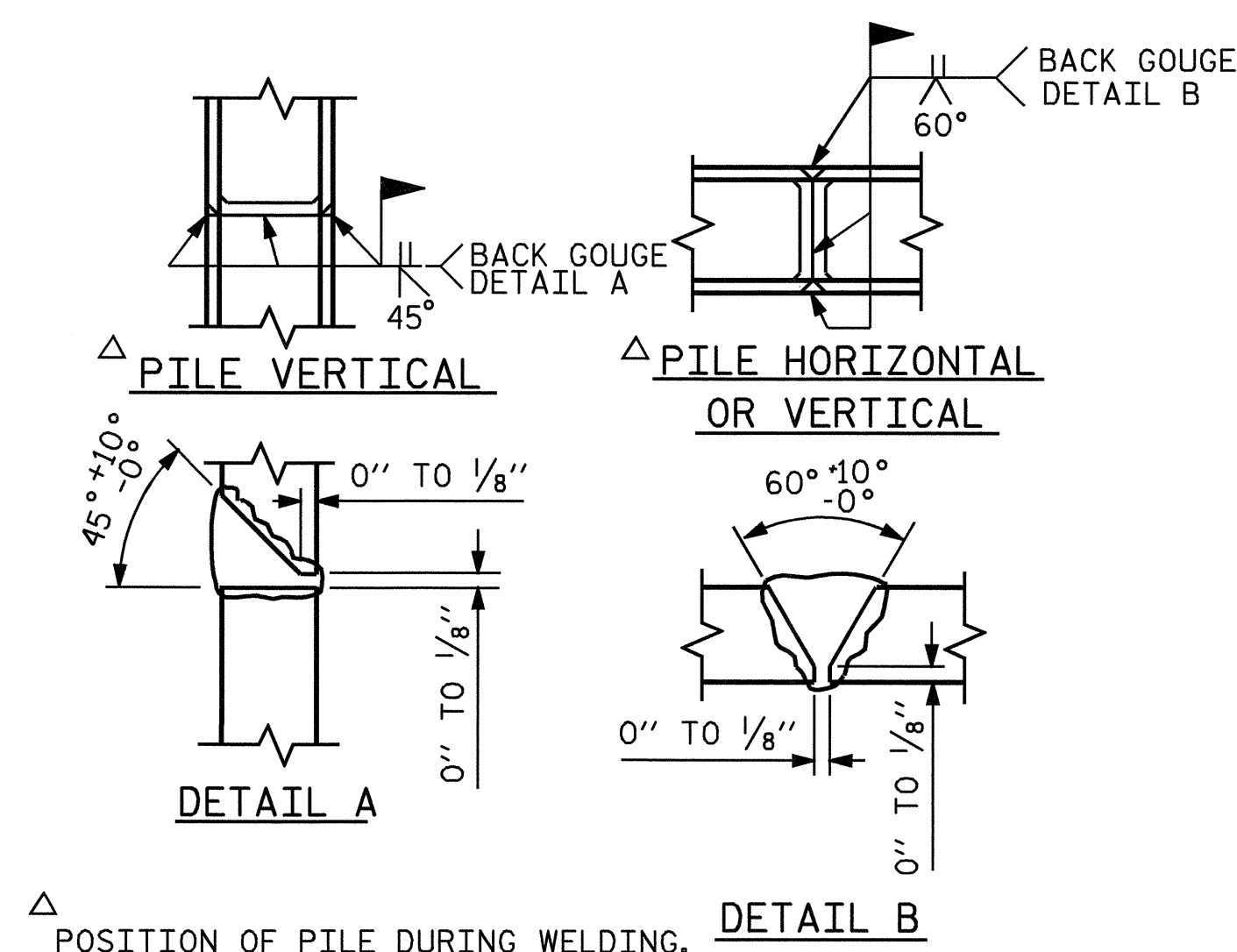
CLASS A CONCRETE BREAKDOWN :

POUR #1 (CAP & LOWER WINGS) 18.6 C.Y.

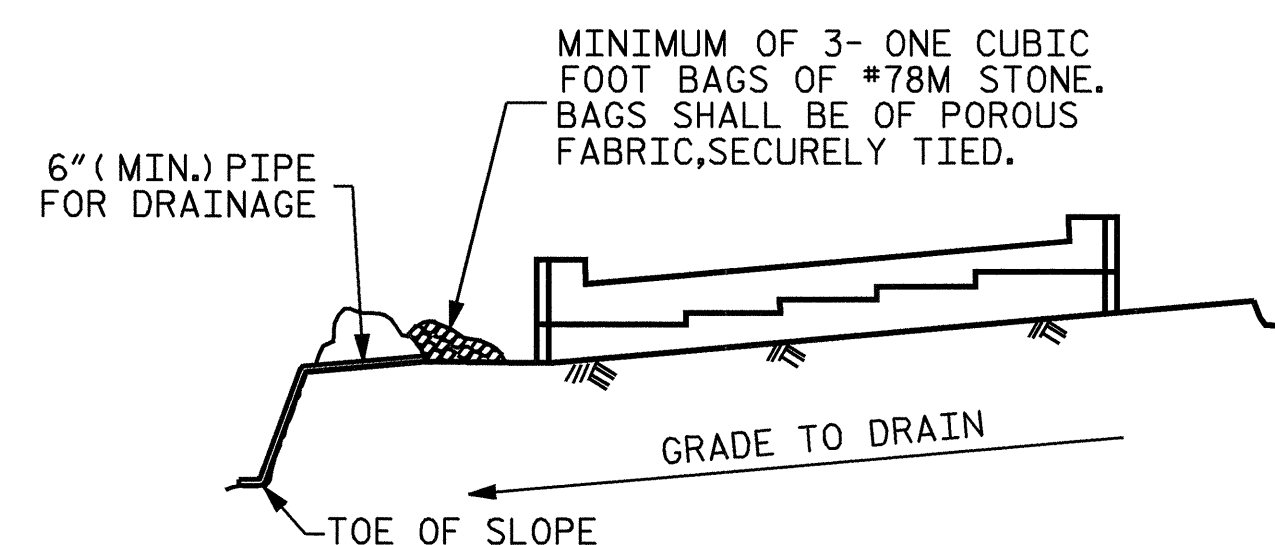
POUR #2 (UPPER WINGS & BACKWALL) 9.3 C.Y.

TOTAL CLASS A CONCRETE 27.9 C.Y.

HP 12 X 53 STEEL PILES :  
No. 9 290.0 L.F.



**PILE SPLICE DETAILS**



BAGGED STONE AND PIPE SHALL BE PLACED IMMEDIATELY AFTER COMPLETION OF END BENT EXCAVATION. PIPE MAY BE EITHER CONCRETE, CORRUGATED STEEL, CORRUGATED ALUMINUM ALLOY, OR CORRUGATED PLASTIC. PERFORATED PIPE WILL NOT BE ALLOWED.

BAGGED STONE SHALL REMAIN IN PLACE UNTIL THE ENGINEER DIRECTS THAT IT BE REMOVED. THE CONTRACTOR SHALL REMOVE AND DISPOSE OF SILT ACCUMULATIONS AT BAGGED STONE WHEN SO DIRECTED BY THE ENGINEER. BAGS SHALL BE REMOVED AND REPLACED WHENEVER THE ENGINEER DETERMINES THAT THEY HAVE DETERIORATED AND LOST THEIR EFFECTIVENESS.

NO SEPARATE PAYMENT WILL BE MADE FOR THIS WORK AND THE ENTIRE COST OF THIS WORK SHALL BE INCLUDED IN THE UNIT CONTRACT PRICE BID FOR THE SEVERAL PAY ITEMS.

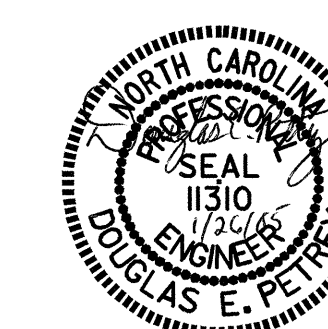
**TEMPORARY DRAINAGE AT END BENT**

PROJECT NO. B-3694  
ROCKINGHAM COUNTY  
STATION: 17+27.50 -L-

SHEET 3 OF 3

STATE OF NORTH CAROLINA  
DEPARTMENT OF TRANSPORTATION  
RALEIGH

SUBSTRUCTURE  
END BENT No. 2



REVISIONS

NO.	BY:	DATE:	NO.	BY:	DATE:	SHEET NO.
1			3			TOTAL SHEETS
2			4			36

DRAWN BY : A.R.CHESSON DATE : 12-04  
CHECKED BY : B.N.GRADY DATE : 12-04