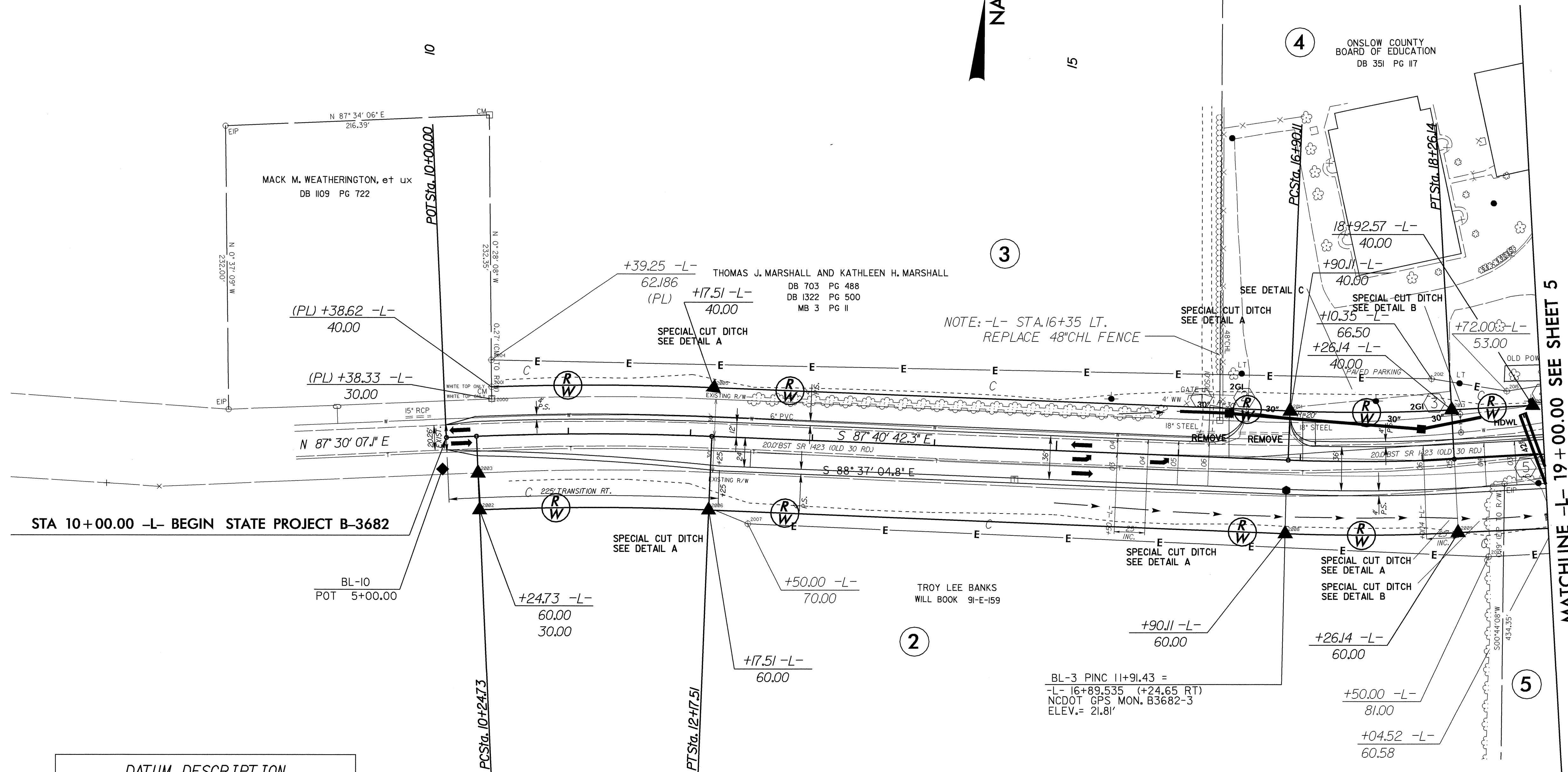
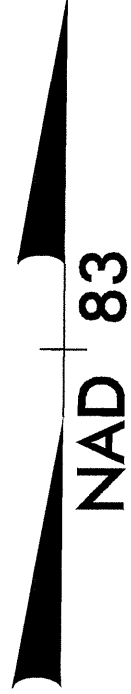
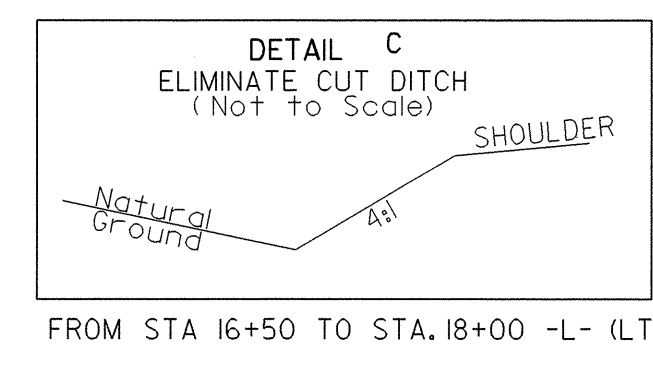
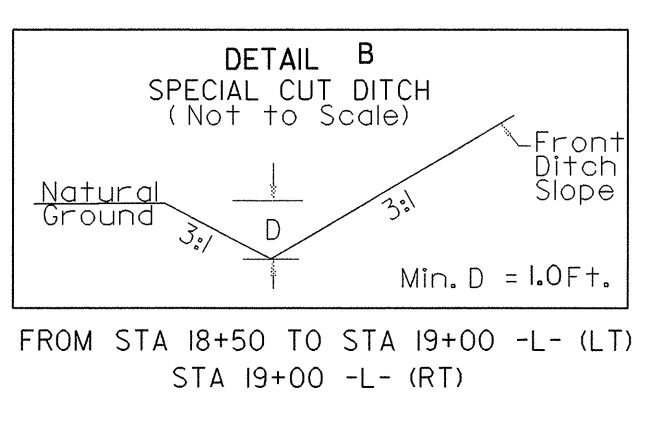
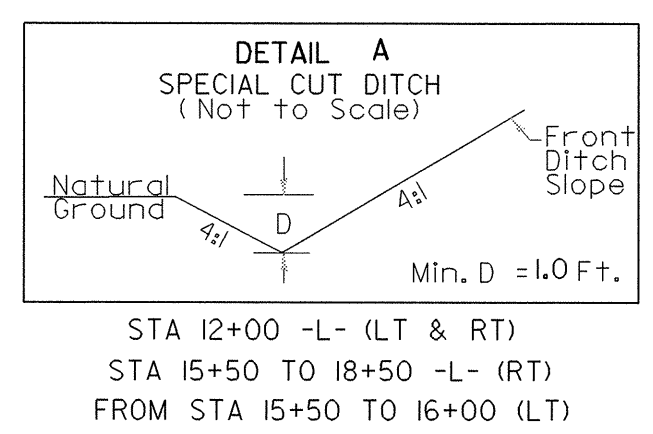


-L-  
 PI Sta 11+21.18  
 $\Delta = 4' 49'' 10.6''$  (RT)  
 $D = 2' 30'' 00.0''$   
 $L = 192.78'$   
 $T = 96.45'$   
 $R = 2,291.83'$   
 $SE = \text{EXIST.}$

-L-  
 PI Sta 17+58.18  
 $\Delta = 5' 26'' 27.6''$  (LT)  
 $D = 4' 00'' 00.0''$   
 $L = 136.03'$   
 $T = 68.06'$   
 $R = 1,432.39'$   
 $SE = 0.06 \text{ ft/ft}$   
 $RO = 150'$



**DATUM DESCRIPTION**  
 THE LOCALIZED COORDINATE SYSTEM DEVELOPED FOR THIS PROJECT IS BASED ON THE STATE PLANE COORDINATES ESTABLISHED BY NCDOT FOR MONUMENT "B3682-3"  
 WITH NAD 83 STATE PLANE GRID COORDINATES OF (NORTHING: 375074.157(011) EASTING: 2507482.844(011))  
 THE AVERAGE COMBINED GRID FACTOR USED ON THIS PROJECT (GROUND TO GRID) IS: 0.999921278  
 THE N.C. LAMBERT GRID BEARING AND LOCALIZED HORIZONTAL GROUND DISTANCE FROM "B3682-3" TO STA 10+00.00 IS  
 $N 86^\circ 28' 31.39'' W$  DISTANCE 689.3727 FEET  
 ALL LINEAR DIMENSIONS ARE LOCALIZED HORIZONTAL DISTANCES  
 VERTICAL DATUM USED IS NGVD 29



See Sheet 12 for -L- Profile

REVISIONS

8/17/99  
 19 JAN 2005 13:35  
 R:\proj\050362\3682\4\ash  
 cpowell AT RD203674