

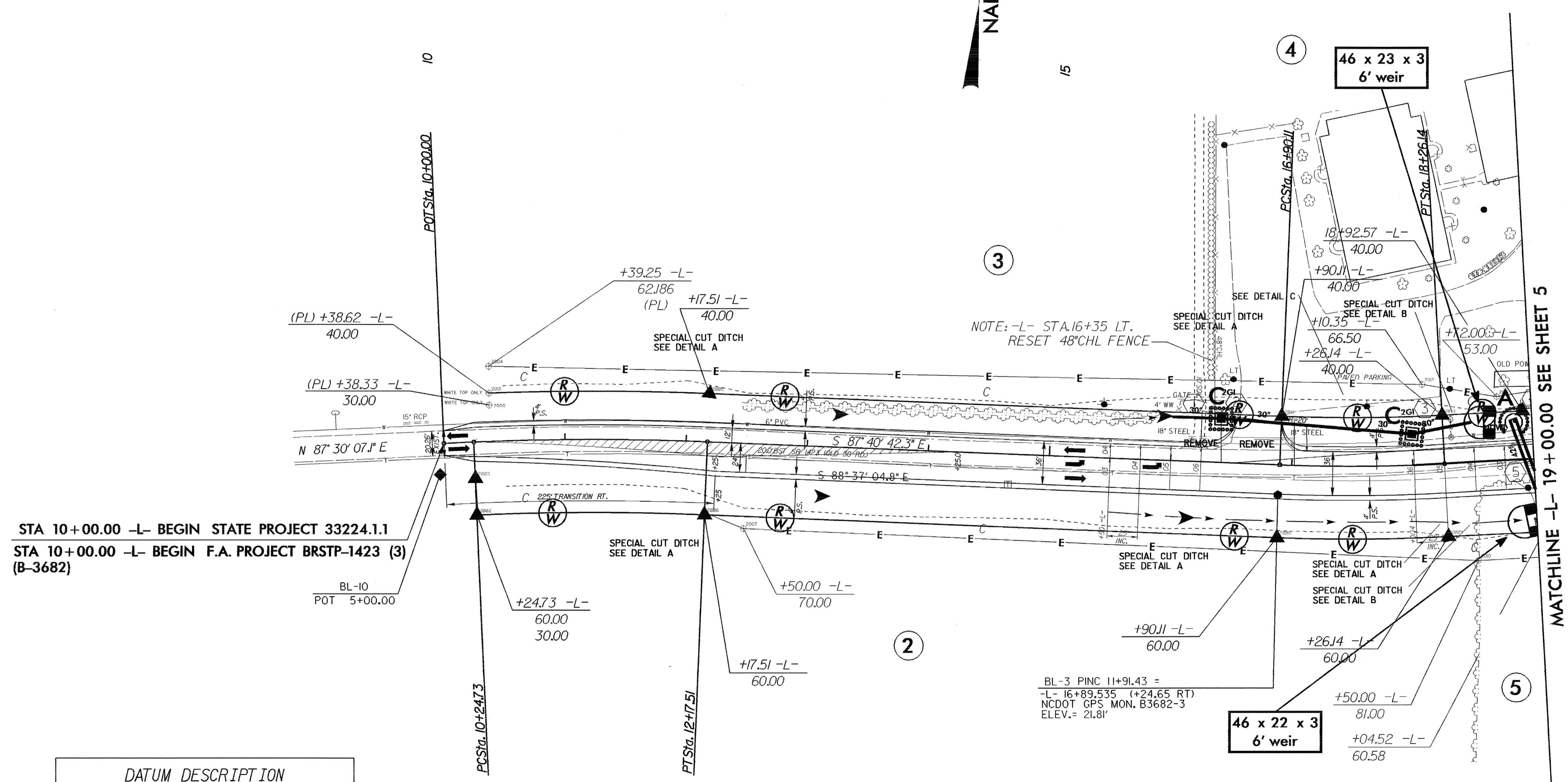
PROJECT REFERENCE NO. B-3682 & W-3413	SHEET NO. EC-11/CONST.4
RW SHEET NO.	
ROADWAY DESIGN ENGINEER	HYDRAULICS ENGINEER

-L-
PI Sta 11+21.18
 $\Delta = 4^{\circ} 49' 10.6''$ (RT)
D = 2' 30" 00.0"
L = 192.78'
T = 96.45'
R = 2,291.83'
SE = EXIST.

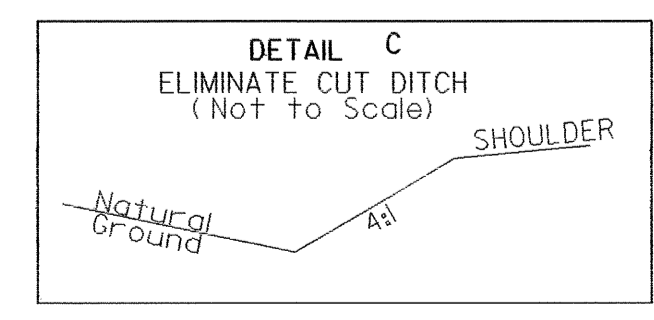
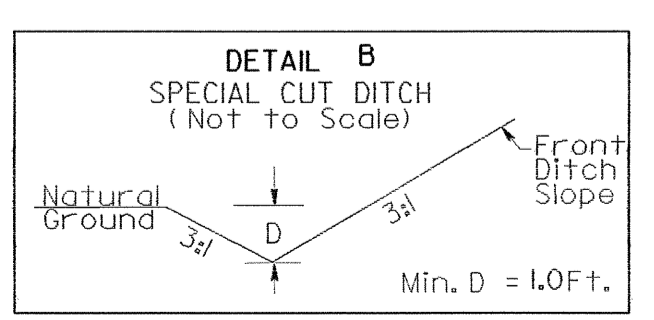
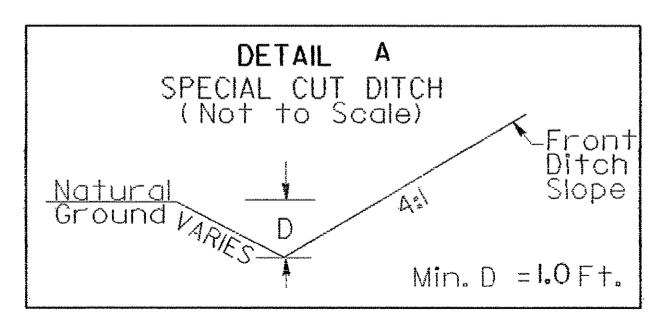
-L-
PI Sta 17+58.18
 $\Delta = 5^{\circ} 26' 27.6''$ (LT)
D = 4' 00" 00.0"
L = 136.03'
T = 68.06'
R = 1,432.39'
SE = 0.06 ft/ft
RO = 150'

 PROP. PAINTED ISLAND.
SEE TRAFFIC CONTROL PLANS

NAD 83



DATUM DESCRIPTION
THE LOCALIZED COORDINATE SYSTEM DEVELOPED FOR THIS PROJECT IS BASED ON THE STATE PLANE COORDINATES ESTABLISHED BY NCDOT FOR MONUMENT "B3682-3" WITH NAD 83 STATE PLANE GRID COORDINATES OF NORTHING: 375074.1570(1) EASTING: 25074828440(1) THE AVERAGE COMBINED GRID FACTOR USED ON THIS PROJECT (GROUND TO GRID) IS: 0.999921278 THE N.C. LAMBERT GRID BEARING AND LOCALIZED HORIZONTAL GROUND DISTANCE FROM "B3682-3" TO -L- STA 10+00.00 IS N 86° 28' 31.39" W DISTANCE 689.3727 FEET ALL LINEAR DIMENSIONS ARE LOCALIZED HORIZONTAL DISTANCES VERTICAL DATUM USED IS NGVD 29



STA 12+00 -L- (LT & RT)
STA 15+50 TO 18+50 -L- (RT)
FROM STA 15+50 TO 16+00 (LT)

FROM STA 18+50 TO STA 19+00 -L- (LT)
STA 19+00 -L- (RT)

FROM STA 16+50 TO STA. 18+00 -L- (LT)

See Sheet 12 for -L- Profile