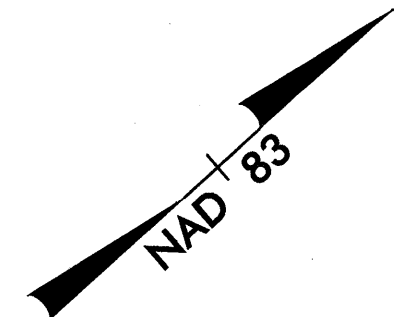


PROJECT REFERENCE NO.	SHEET NO.
B-3496	UO-2
DESIGNED BY:	
DRAWN BY:	
CHECKED BY:	
APPROVED BY:	
REVISED:	
NORTH CAROLINA DEPARTMENT OF TRANSPORTATION	
DESIGN SERVICES UNIT PHONE: (919) 250-4128 FAX: (919) 250-4119	
UTILITIES BY OTHERS PLANS ONLY	

NOTE:
ALL PROPOSED UTILITY WORK
SHOWN ON THIS SHEET WILL
BE DONE BY OTHERS

UTILITIES BY OTHERS

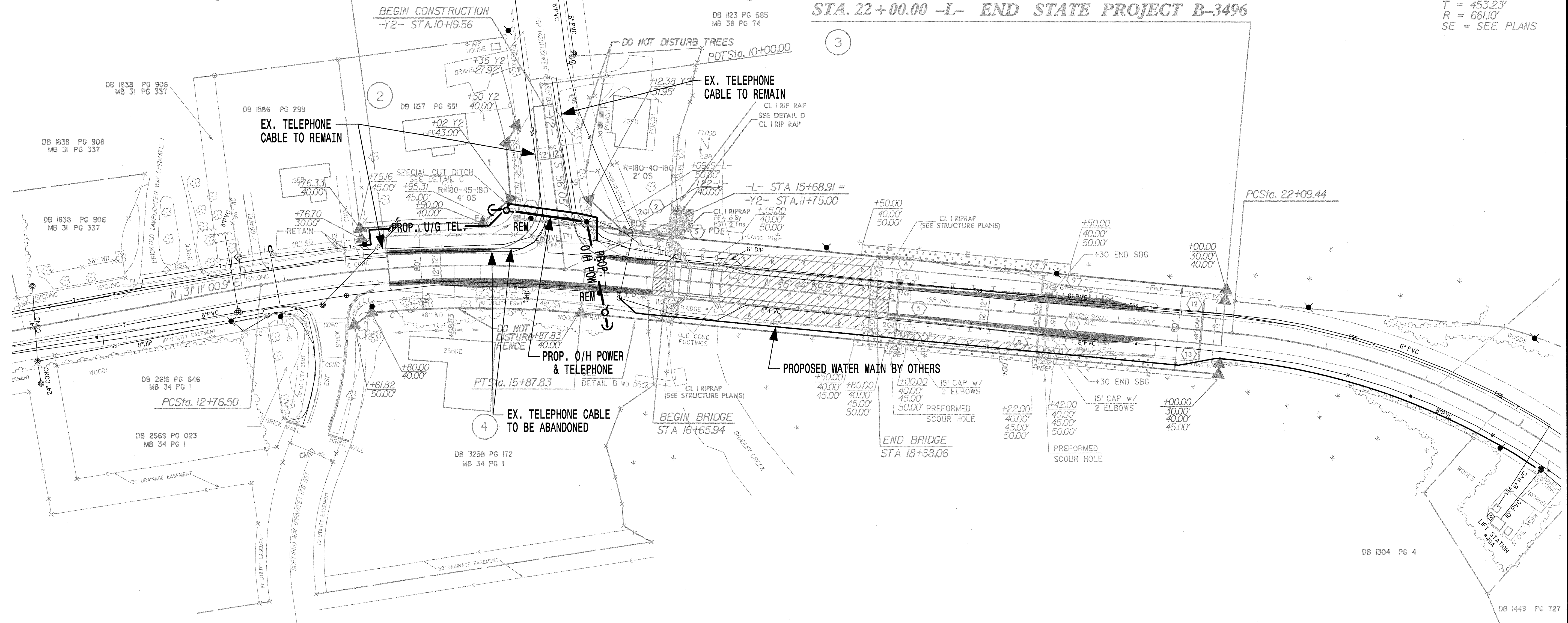
-L-
PI Sta 14+33.13
Δ = 15° 33' 58.6" (RT)
D = 5' 00' 00.0"
L = 311.33'
T = 156.63'
R = 145.92'
SE = SEE PLANS



STA. 14+00.00 -L-
BEGIN STATE PROJECT B-3496

STA. 22+00.00 -L- END STATE PROJECT B-3496

-L-
PI Sta 26+62.68
Δ = 68° 52' 00.0" (RT)
D = 8' 40' 00.0"
L = 794.61'
T = 453.23'
R = 661.0'
SE = SEE PLANS



DATUM DESCRIPTION
THE LOCALIZED COORDINATE SYSTEM DEVELOPED FOR THIS PROJECT IS BASED ON THE STATE PLANE COORDINATES ESTABLISHED BY NCDOT FOR MONUMENT "B3496-2" WITH NAD 83 STATE PLANE GRID COORDINATES OF NORTHING: 173841.808(11) EASTING: 2348781.146(11) THE AVERAGE COMBINED GRID FACTOR USED ON THIS PROJECT (GROUND TO GRID) IS: 1.000038649 THE N.C. LAMBERT GRID BEARING LOCALIZED HORIZONTAL GROUND DISTANCE FROM "B3496-2" TO -L- STATION 14+00.00 IS S 42° 07' 24.26" E DISTANCE 640.1185 FT. ALL LINEAR DIMENSIONS ARE LOCALIZED HORIZONTAL DISTANCES VERTICAL DATUM USED IS NGVD 29

Prepared in the Office of:
EARTH TECH
701 Corporate Center Drive, Suite 475
Raleigh, NC 27607
(919) 854-6200 - (919) 854-6259(FAX)

04/22/2004 08:19:16 AM
 C:\PROJECTS\B3496\Drawings\UO-2.dwg
 04/22/2004