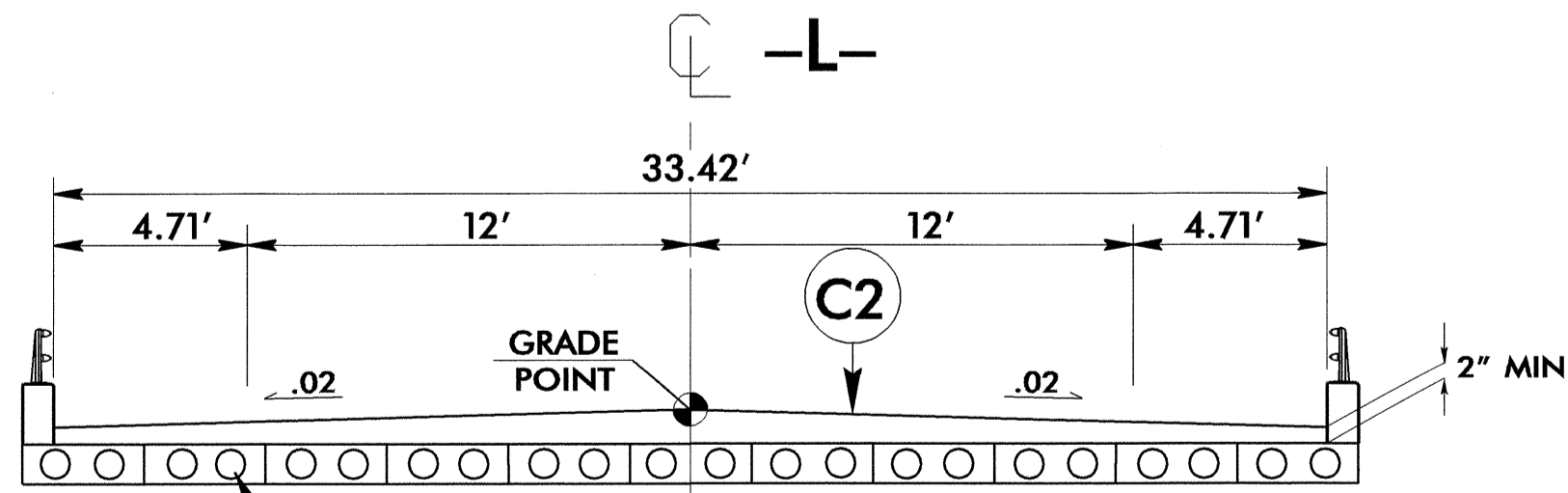
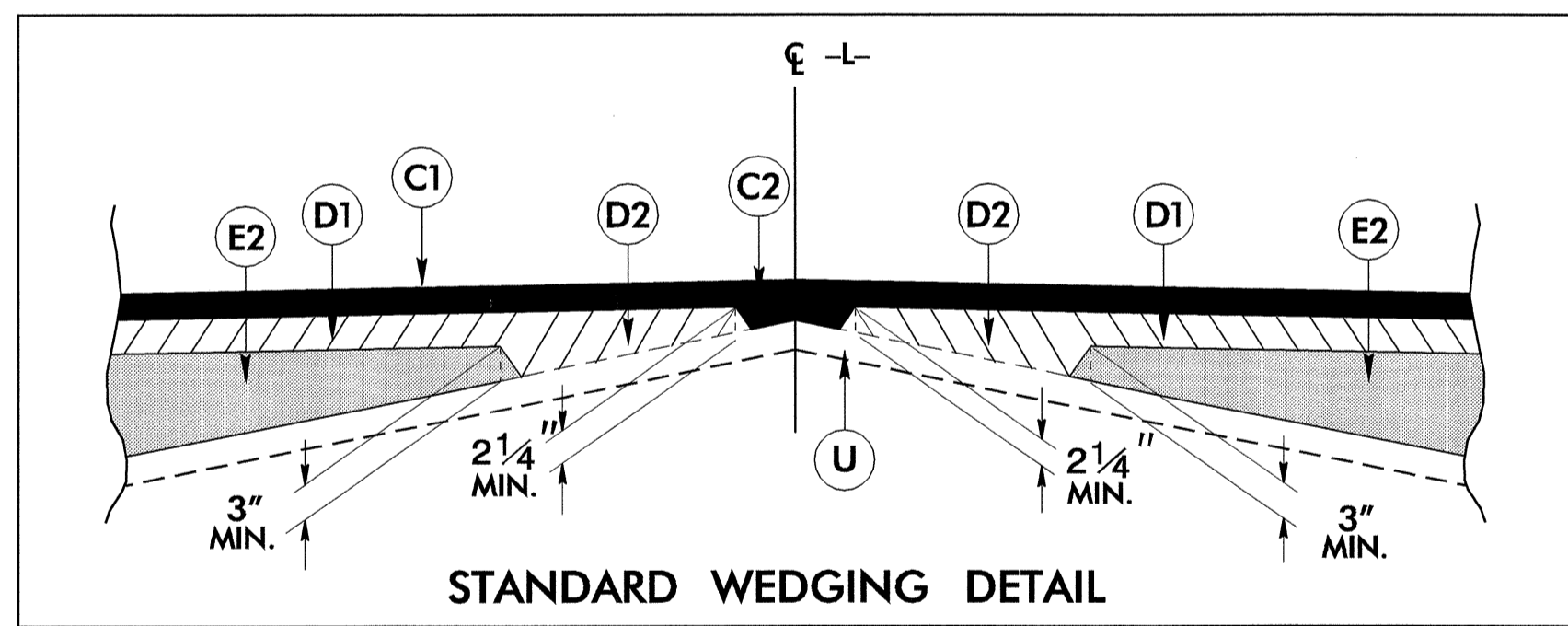


6/2/99

**FINAL PAVEMENT SCHEDULE**

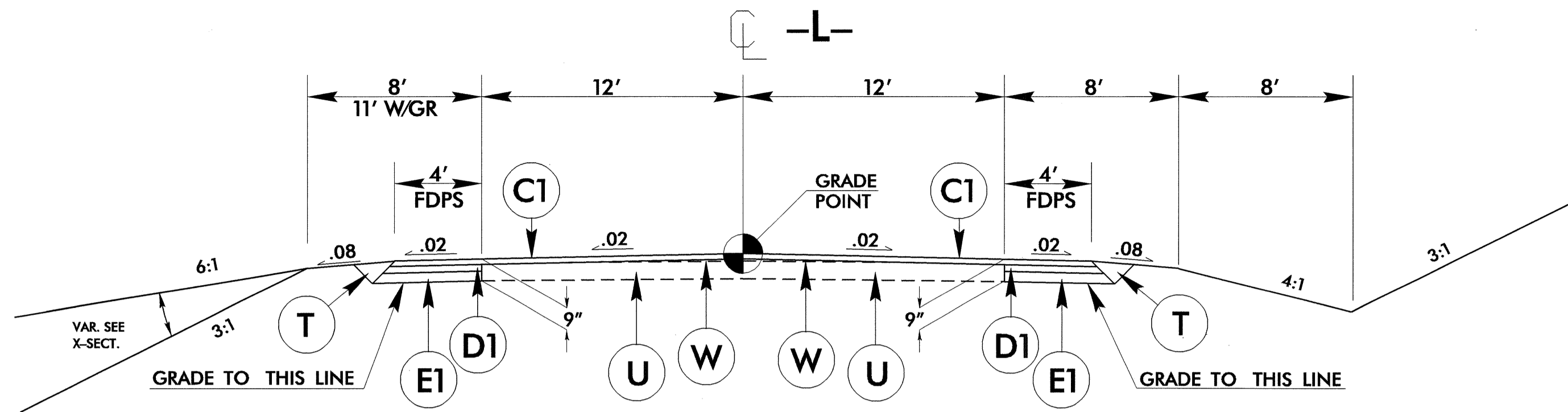
C1	PROP. APPROX. 1½" ASPHALT CONCRETE SURFACE COURSE, TYPE S9.5B, AT AN AVERAGE RATE OF 168 LBS. PER SQ. YD.
C2	PROP. VAR. DEPTH ASPHALT CONCRETE SURFACE COURSE, TYPE S9.5B, AT AN AVERAGE RATE OF 112 LBS. PER SQ. YD. PER 1" DEPTH. TO BE PLACED IN LAYERS NOT TO EXCEED 1½" IN DEPTH.
D1	PROP. APPROX. 3" ASPHALT CONCRETE INTERMEDIATE COURSE, TYPE I19.0B, AT AN AVERAGE RATE OF 342 LBS. PER SQ. YD.
D2	PROP. VAR. DEPTH ASPHALT CONCRETE INTERMEDIATE COURSE, TYPE I19.0B, AT AN AVERAGE RATE OF 114 LBS. PER SQ. YD. PER 1" DEPTH. TO BE PLACED IN LAYERS NOT LESS THAN 2¼" IN DEPTH OR GREATER THAN 4" IN DEPTH.
E1	PROP. APPROX. 4½" ASPHALT CONCRETE BASE COURSE, TYPE B25.0B, AT AN AVERAGE RATE OF 513 LBS. PER SQ. YD.
E2	PROP. VAR. DEPTH ASPHALT CONCRETE BASE COURSE, TYPE B25.0B, AT AN AVERAGE RATE OF 114 LBS. PER SQ. YD. PER 1" DEPTH. TO BE PLACED IN LAYERS NOT LESS THAN 3" IN DEPTH OR GREATER THAN 5½" IN DEPTH.
T	EARTH MATERIAL.
U	EXISTING PAVEMENT.
W	VARIABLE DEPTH ASPHALT PAVEMENT (SEE STANDARD WEDGING DETAIL THIS SHEET).

NOTE: PAVEMENT EDGE SLOPES ARE 1:1 UNLESS SHOWN OTHERWISE.



USE TYPICAL SECTION NO. 5

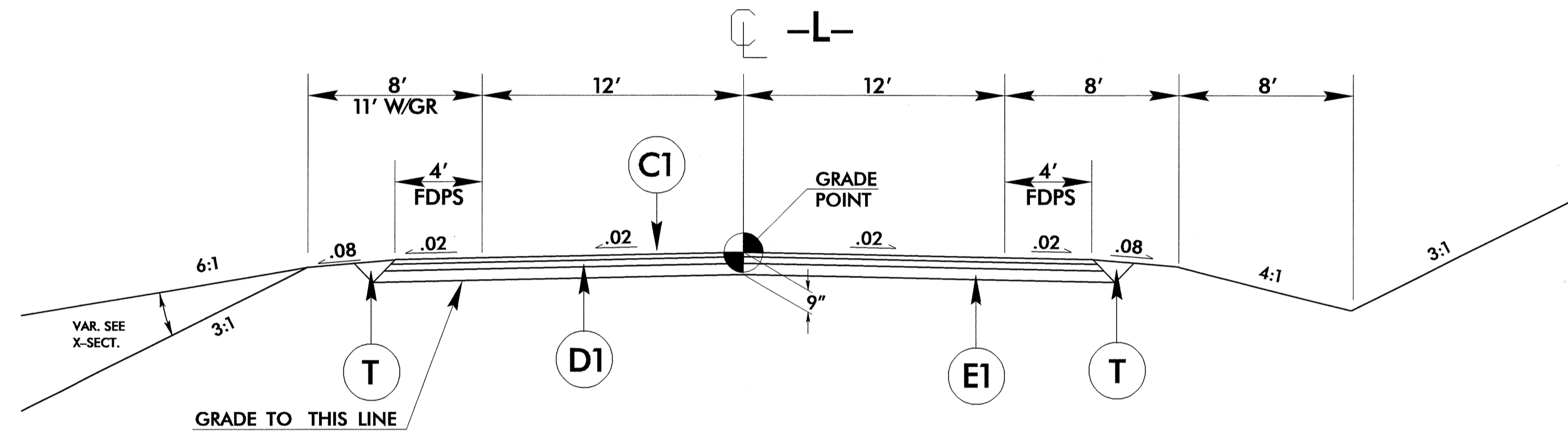
-L- STA. 16+65.94 (BEGIN BRIDGE) TO 18+68.06 (END BRIDGE)



**TYPICAL SECTION No. 1**

USE TYPICAL SECTION NO. 1

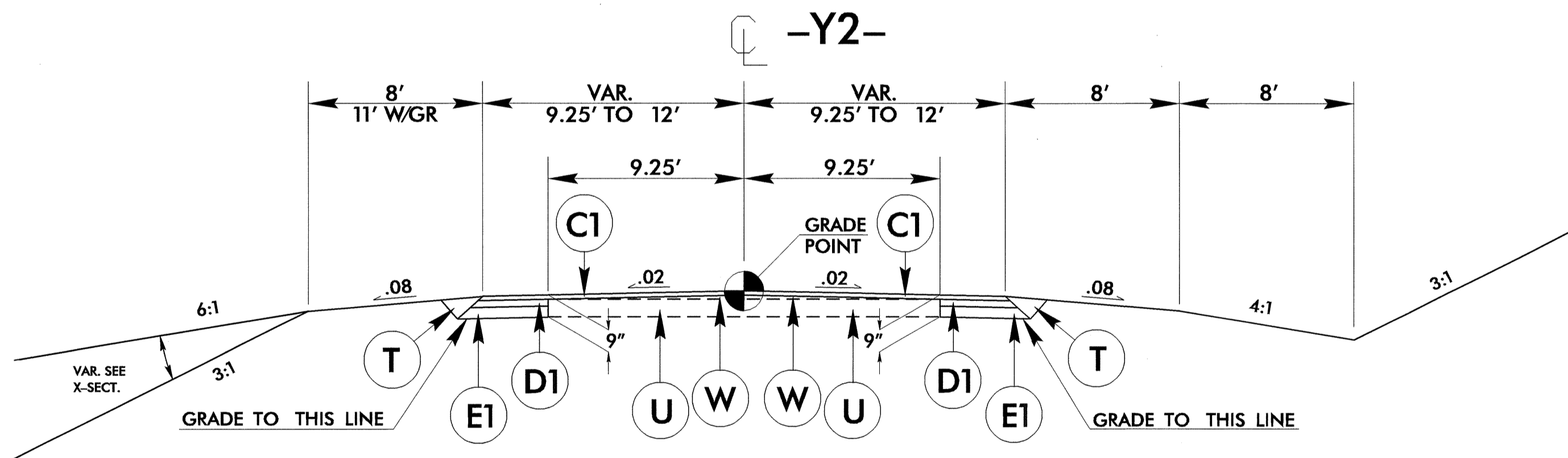
-L- STA. 14+00.00 TO 16+20.00  
-L- STA. 19+00.00 TO 21+30.00



**TYPICAL SECTION No. 2**

USE TYPICAL SECTION NO. 2

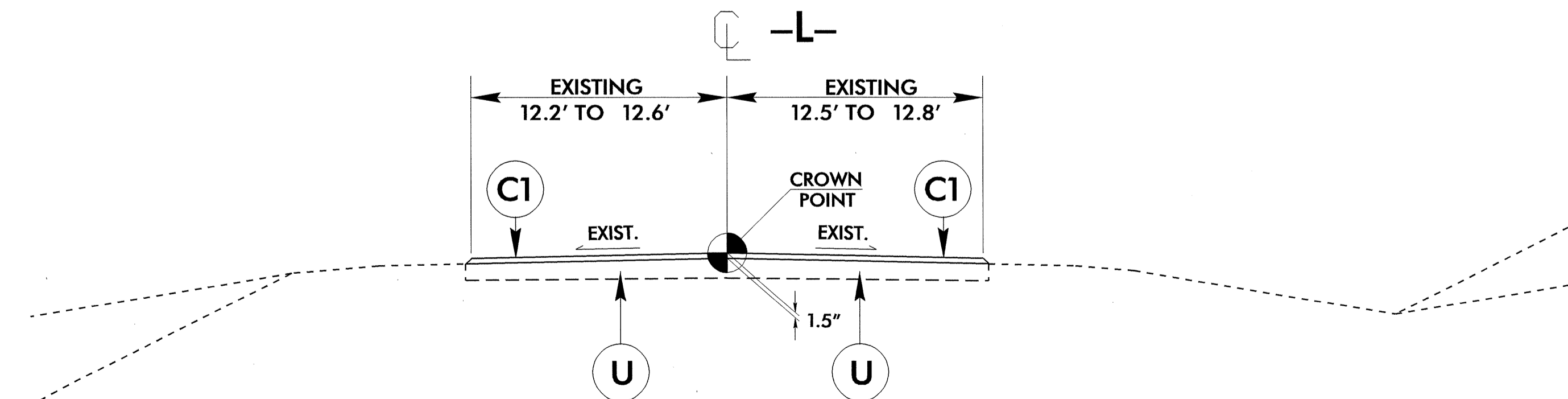
-L- STA. 16+20.00 TO 16+65.94 (BEGIN BRIDGE)  
-L- STA. 18+68.06 (END BRIDGE) TO 19+00.00



**TYPICAL SECTION No. 3**

USE TYPICAL SECTION NO. 3

-Y2- STA. 10+19.56 TO 11+62.74



**TYPICAL SECTION No. 4**

USE TYPICAL SECTION NO. 4

-L- STA. 21+30.00 TO 22+00.00

PROJECT REFERENCE NO. B-3496	SHEET NO. 2

13-APR-2004 08:42  
R:\pr\project\163496.txd  
BWB-annan