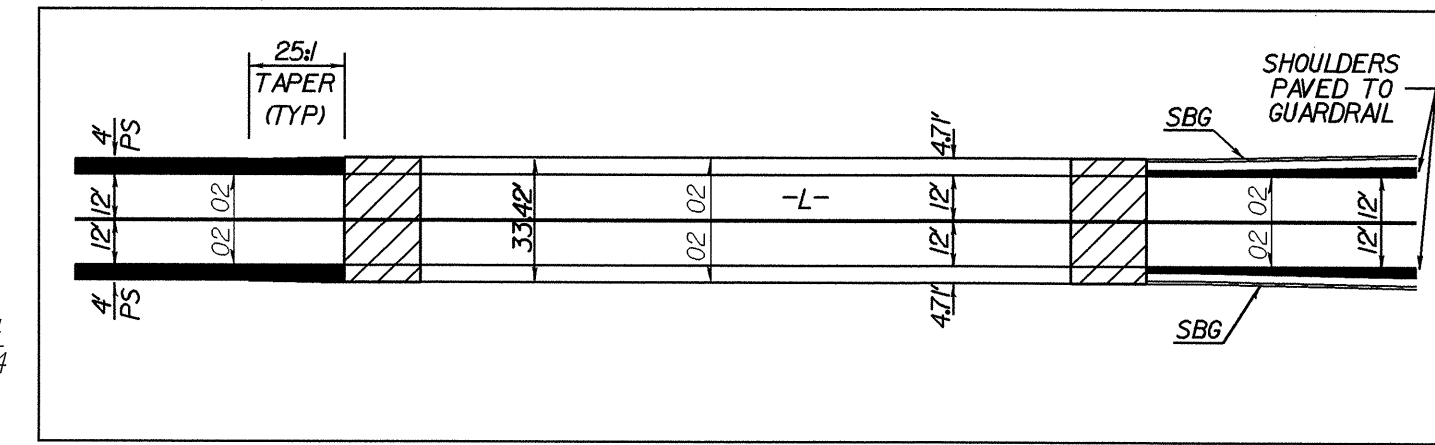
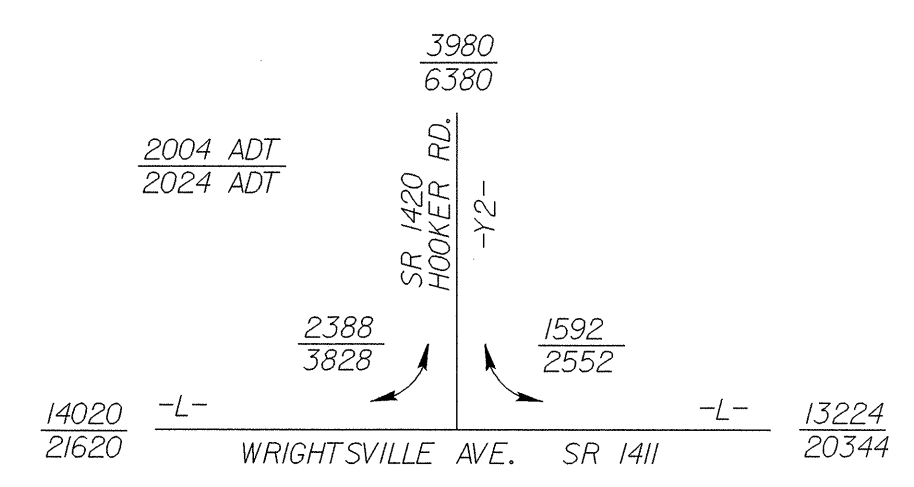
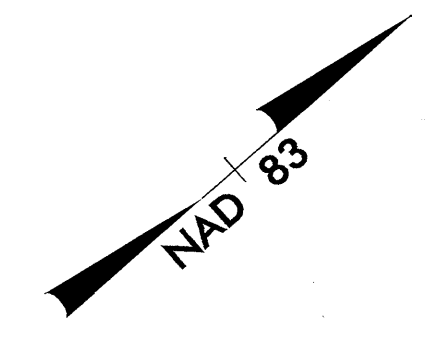


REVISIONS

-L-
 PI Sta 14+33.3
 $\Delta = 15' 33" 58.6" (RT)$
 $D = 5' 00' 00.0"$
 $L = 311.33'$
 $T = 156.63'$
 $R = 145.92'$
 SE = SEE PLANS



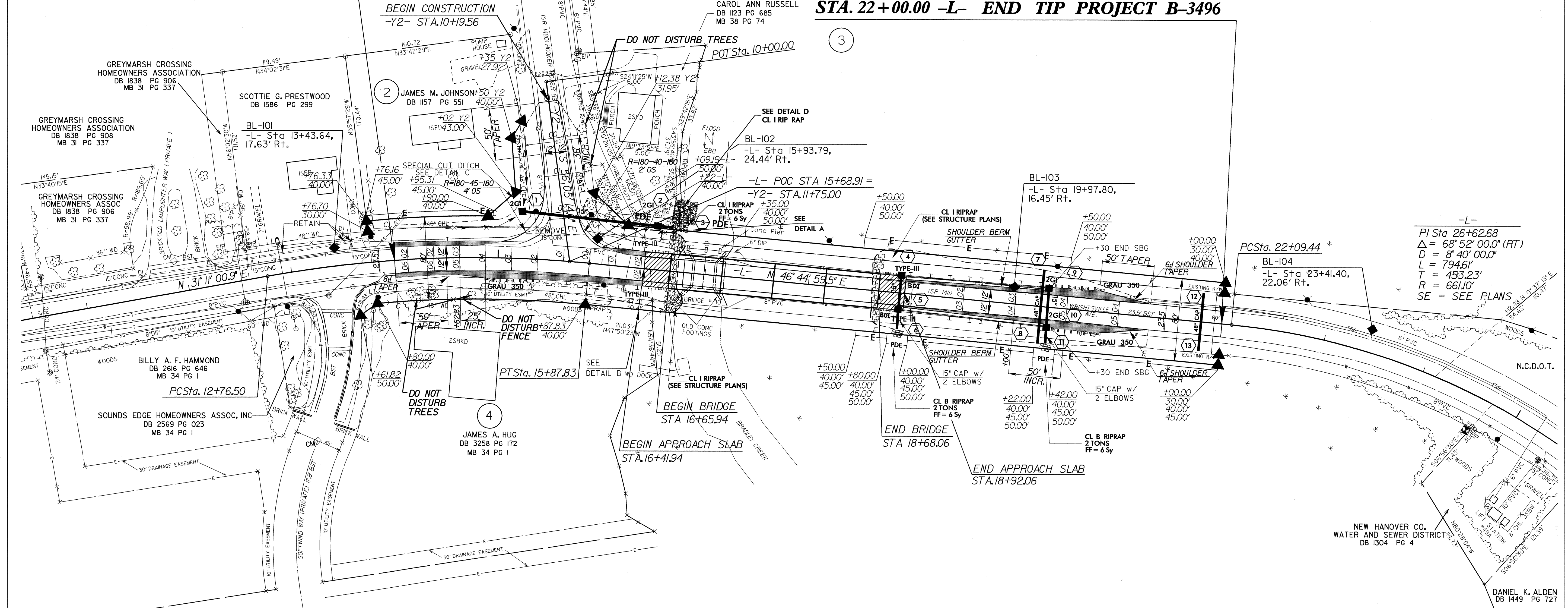
RELATIONSHIP OF PAVEMENT TO BRIDGE



PROJECT REFERENCE NO. B-3496	SHEET NO. 4
RW SHEET NO.	
BR. Moore 5/5/04 W. Allen 5/31/04	

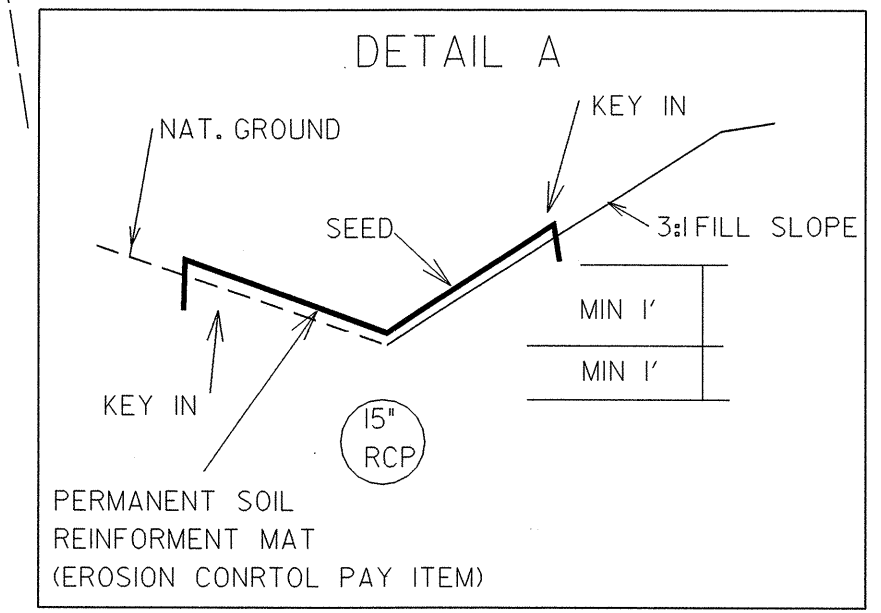
STA. 14+00.00 -L-
BEGIN TIP PROJECT B-3496

STA. 22+00.00 -L- END TIP PROJECT B-3496

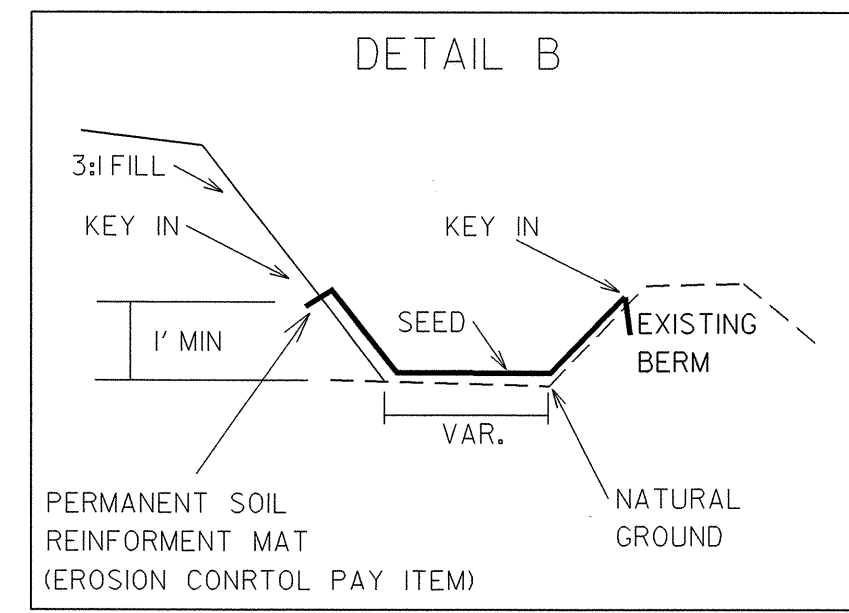


-L-
 PI Sta 26+62.68
 $\Delta = 68' 52' 00.0" (RT)$
 $D = 8' 40' 00.0"$
 $L = 794.61'$
 $T = 453.23'$
 $R = 661.10'$
 SE = SEE PLANS

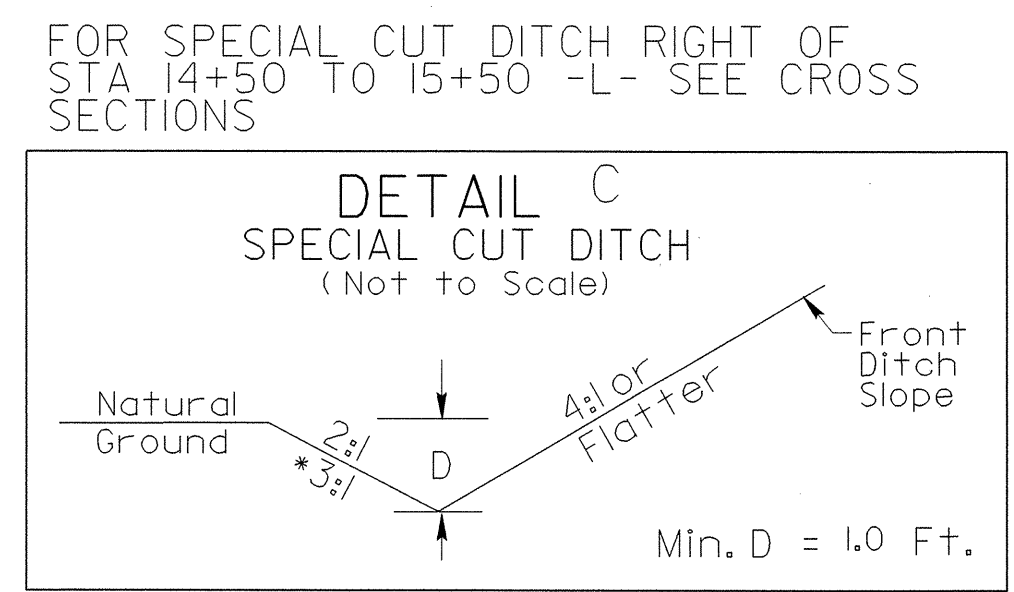
DATUM DESCRIPTION
 THE LOCALIZED COORDINATE SYSTEM DEVELOPED FOR THIS PROJECT IS BASED ON THE STATE PLANE COORDINATES ESTABLISHED BY MCDOT FOR MONUMENT "B3496-2" WITH NAD 83 STATE PLANE GRID COORDINATES OF NORTHING: 1738418081(1) EASTING: 2348781.1461(1) THE AVERAGE COMBINED GRID FACTOR USED ON THIS PROJECT (GROUND TO GRID) IS: 1.000038649 THE N.C. LAMBERT GRID BEARING LOCALIZED HORIZONTAL GROUND DISTANCE FROM "B3496-2" TO L- STATION 14+00.00 IS S 42 07 24.26 E DISTANCE 640.1185 FT. ALL LINEAR DIMENSIONS ARE LOCALIZED HORIZONTAL DISTANCES VERTICAL DATUM USED IS NGVD 29



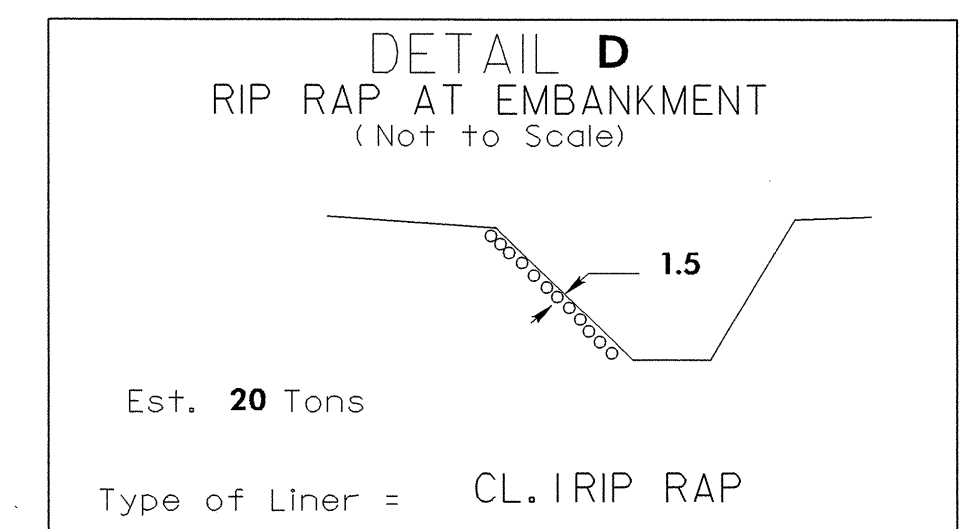
STATION 16+50 TO 16+70 -L- L+



STATION 16+00 TO 16+50 -L- R+



* STA 14+50 TO 15+25 -L- L+
 STA 10+50 TO 11+35 -Y2- R+



Est. 20 Tons
 Type of Liner = CL I RIP RAP

PAVED SHOULDER
 BRIDGE APPROACH SLAB

FOR -L- & -Y2- PROFILE SEE SHEET 5
 FOR STRUCTURE PLANS SEE SHEETS S-1 THRU S-28

04-MAY-2004 09:36
 R:\project\B3496\4\psh
 RWB\brannon AT