

PROJECT REFERENCE NO.		SHEET NO.	
B-3496		EC-3/CONST.4	
RW SHEET NO.			
ROADWAY DESIGN ENGINEER		HYDRAULICS ENGINEER	

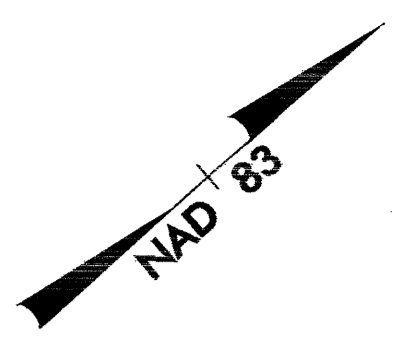
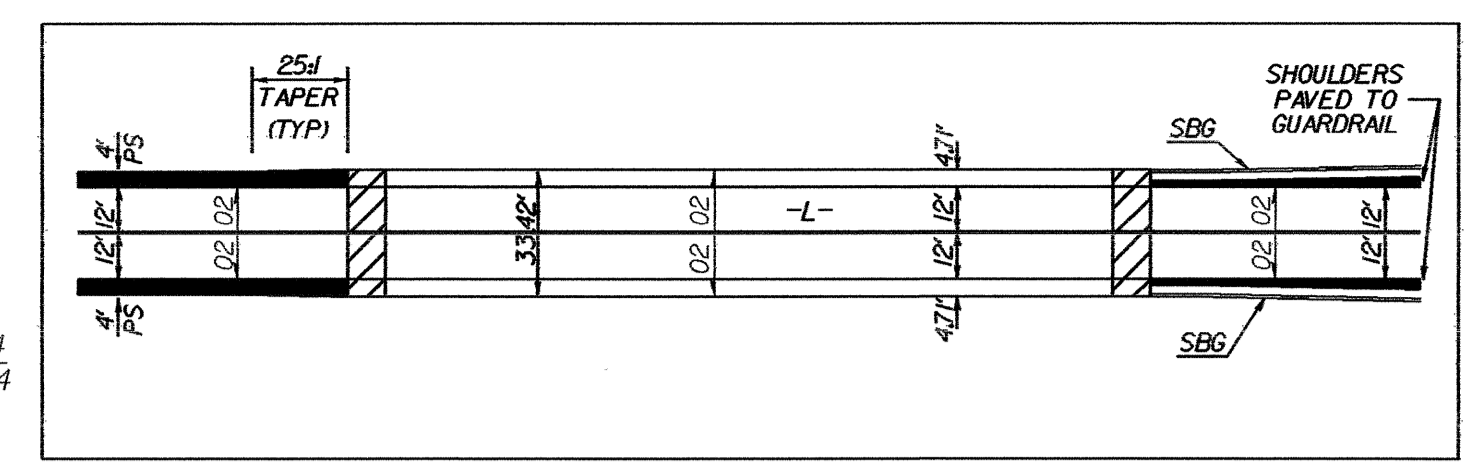
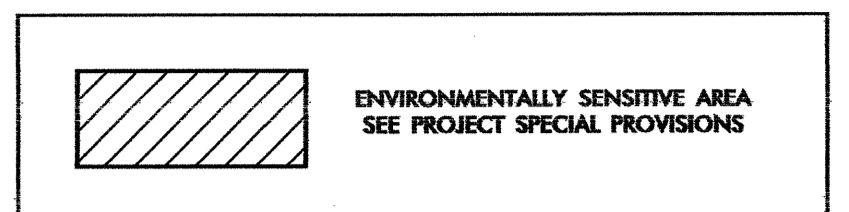
NOTE: TEMPORARY SILT FENCE SHALL BE INSTALLED A MINIMUM OF 3 FEET FROM TOE OF FILL IN WETLAND AREAS

NOTE: UTILIZE TEMPORARY ROCK SILT CHECK TYPE - A AS STILLING BASIN WHERE APPLICABLE

NOTE: PLACE TEMPORARY ROCK SEDIMENT DAMS TYPE- B AND TEMPORARY ROCK SILT CHECKS TYPE-A AT DRAINAGE OUTLETS.

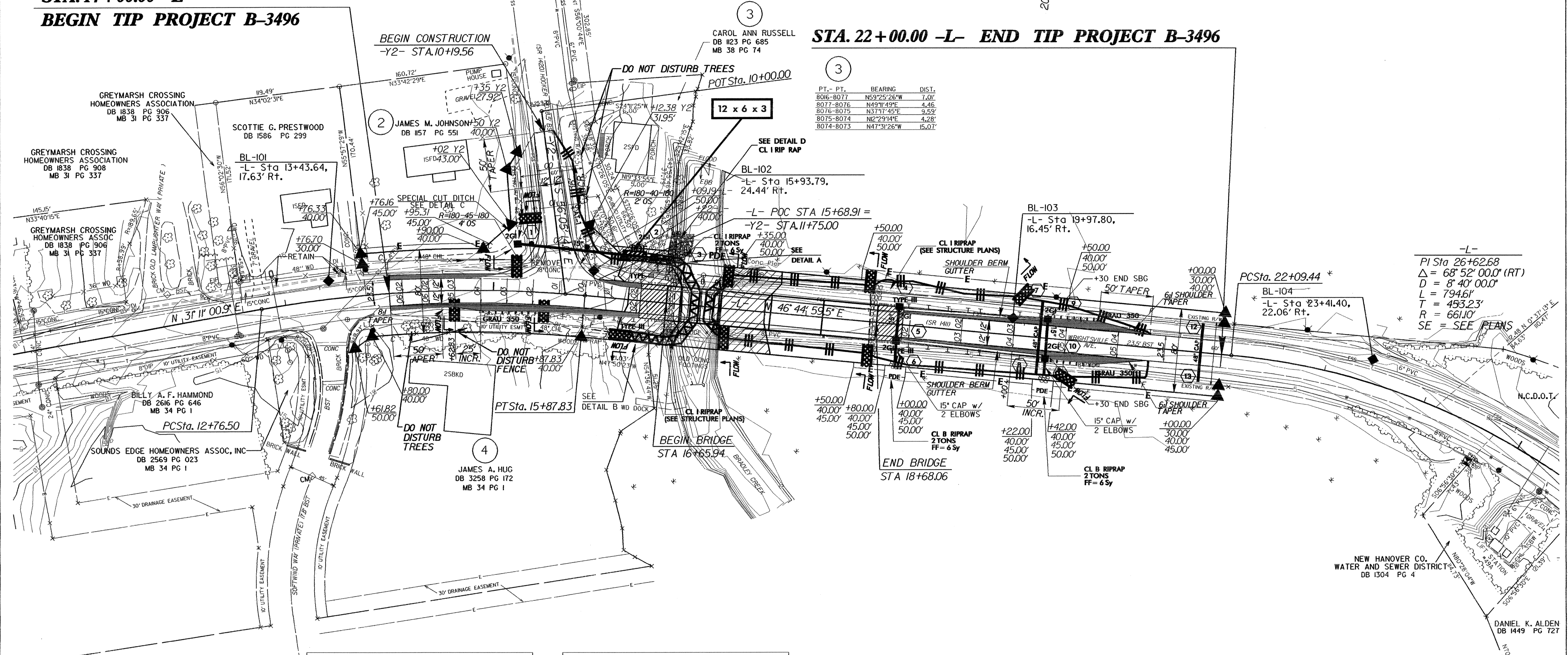
CLEARING AND GRUBBING EROSION CONTROL FOR CONSTRUCTION SHEET 4

-L-
 PI Sta 14+33.3
 $\Delta = 15^\circ 33' 58.6" (RT)$
 $D = 5' 00" 00.0"$
 $L = 311.33'$
 $T = 156.63'$
 $R = 1,145.92'$
 SE = SEE PLANS



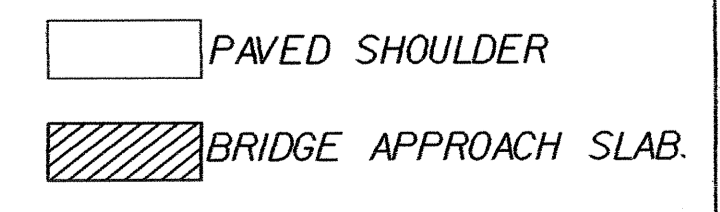
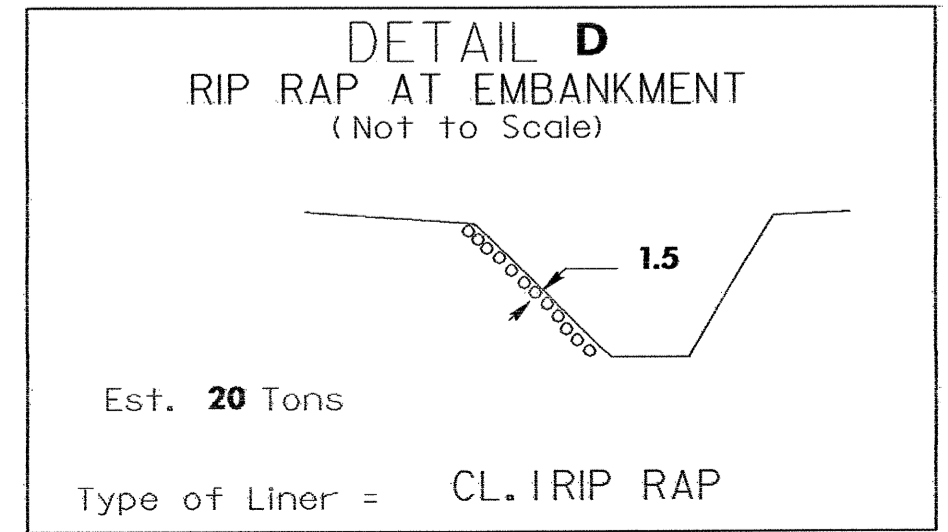
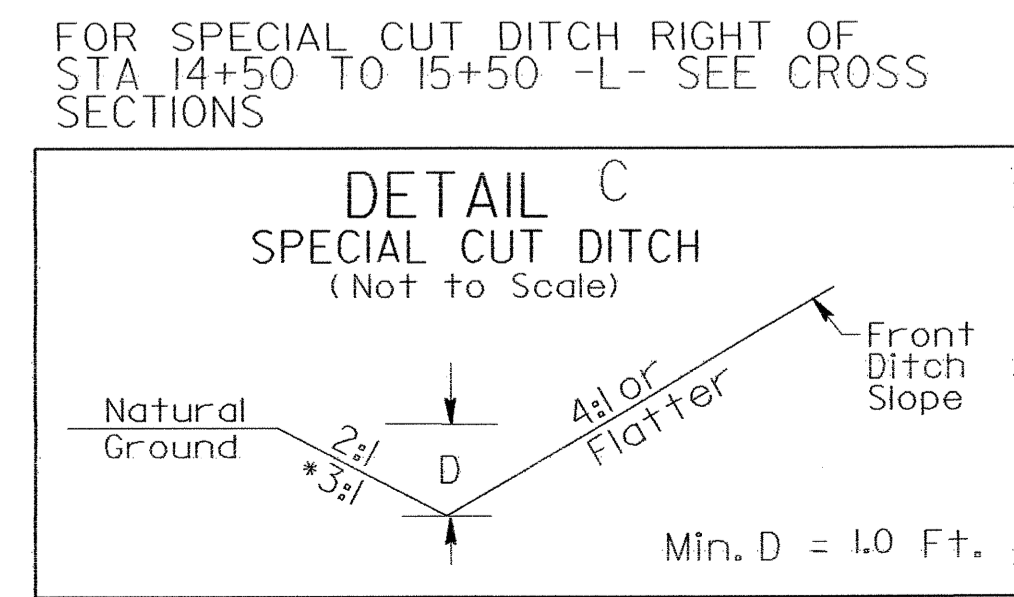
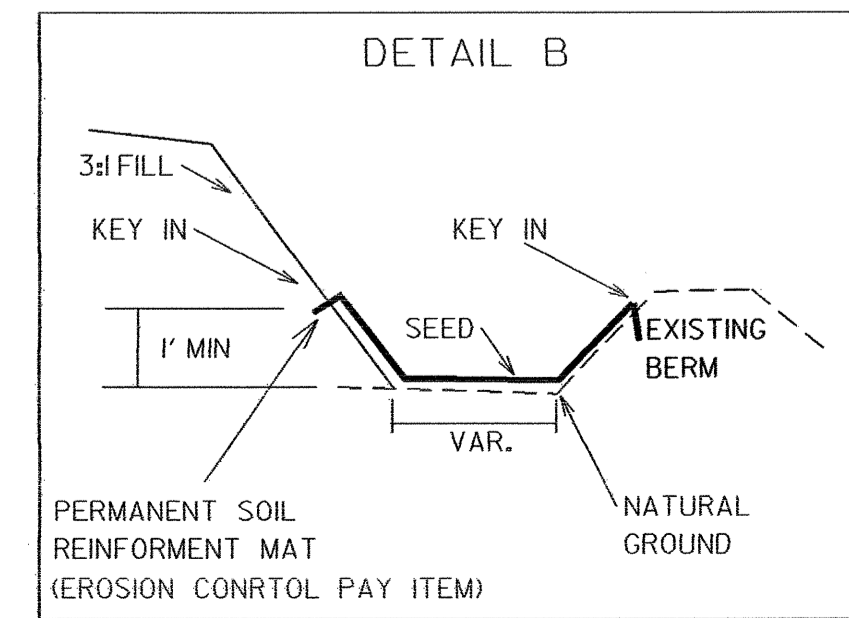
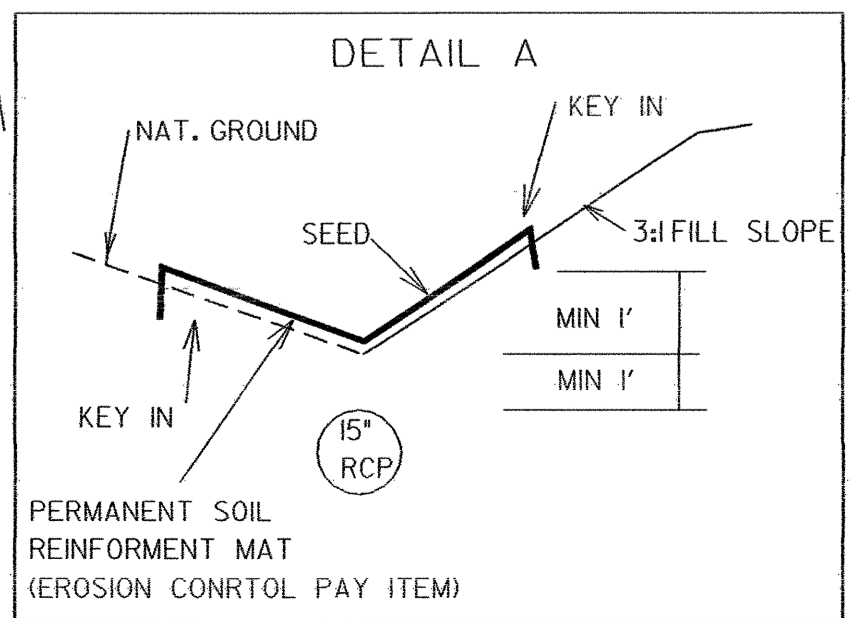
**STA. 14+00.00 -L-
 BEGIN TIP PROJECT B-3496**

STA. 22+00.00 -L- END TIP PROJECT B-3496



PT. - PT.	BEARING	DIST.
8016-8017	N59°25'26"W	7.01'
8017-8016	N49°14'49"E	4.45'
8016-8075	N37°17'45"E	9.53'
8075-8074	N12°29'14"E	4.28'
8074-8073	N47°31'26"W	15.07'

DATUM DESCRIPTION
 THE LOCALIZED COORDINATE SYSTEM DEVELOPED FOR THIS PROJECT IS BASED ON THE STATE PLANE COORDINATES ESTABLISHED BY NCDOT FOR MONUMENT "B3496-2" WITH NAD 83 STATE PLANE GRID COORDINATES OF NORTHING: 173841.808(1) EASTING: 2348781.146(1) THE AVERAGE COMBINED GRID FACTOR USED ON THIS PROJECT (GROUND TO GRID) IS: 1.000038649 THE N.C. LAMBERT GRID BEARING LOCALIZED HORIZONTAL GROUND DISTANCE FROM "B3496-2" TO ± STATION 14+00.00 IS S 42° 07' 24.26" E DISTANCE 640.1185 FT. ALL LINEAR DIMENSIONS ARE LOCALIZED HORIZONTAL DISTANCES VERTICAL DATUM USED IS NGVD 29



* STA 14+50 TO 15+25 -L- L+
 STA 10+50 TO 11+35 -Y2- R+