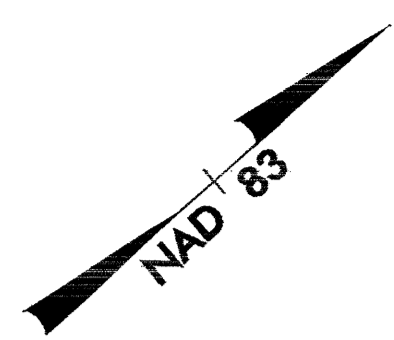
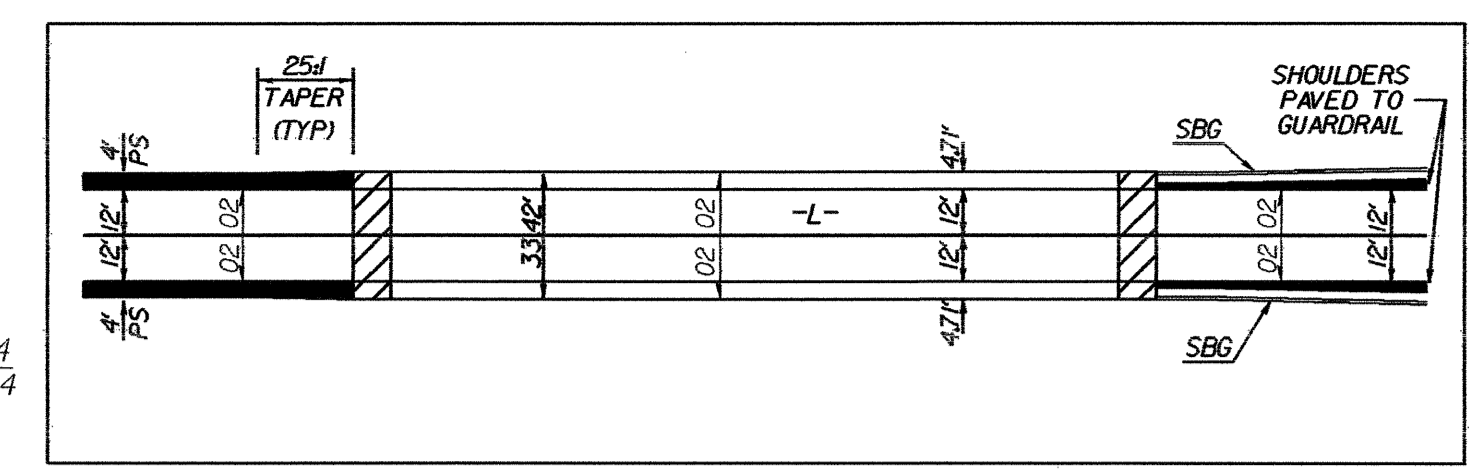
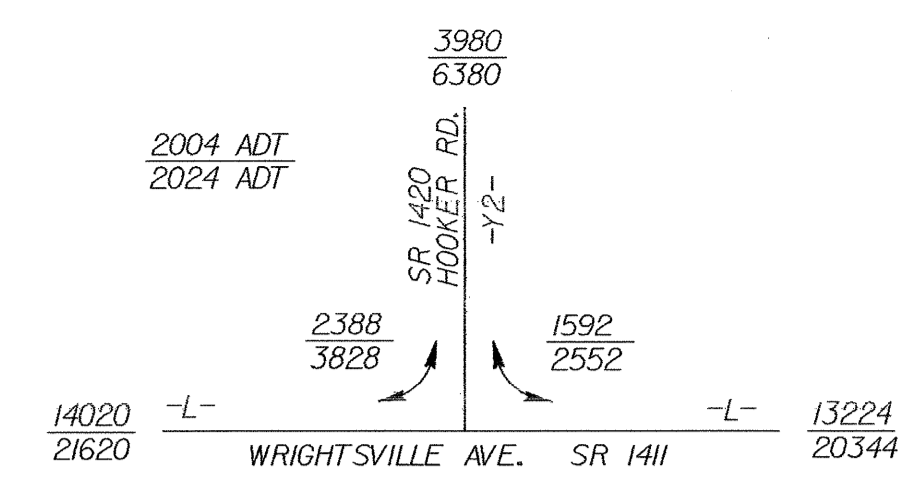


PROJECT REFERENCE NO.	SHEET NO.
B-3496	EC-4/CONST.4
RW SHEET NO.	
ROADWAY DESIGN ENGINEER	HYDRAULICS ENGINEER

**NOTE:**  
TEMPORARY SILT FENCE SHALL BE INSTALLED A MINIMUM OF 3 FEET FROM TOE OF FILL IN WETLAND AREAS

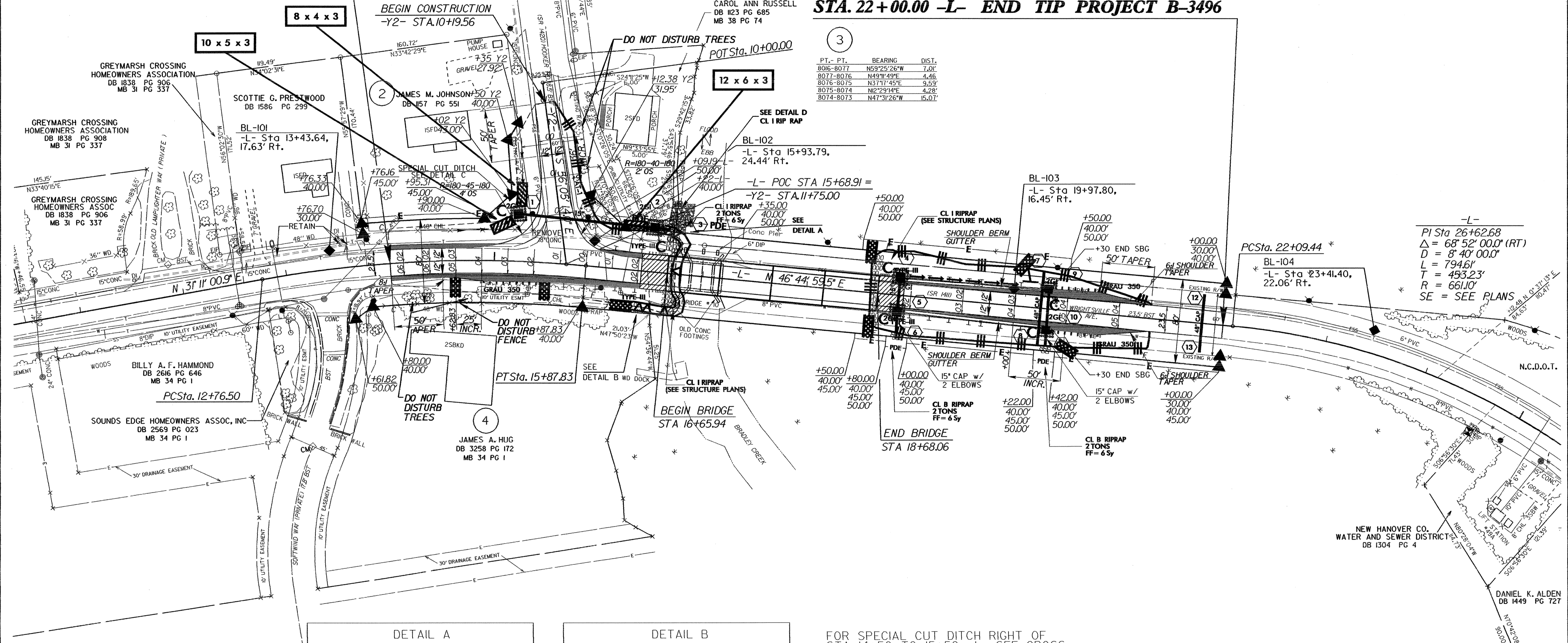
**NOTE:**  
UTILIZE TEMPORARY ROCK SILT CHECK TYPE - A AS STILLING BASIN WHERE APPLICABLE.

-L-  
PI Sta 14+33.13  
 $\Delta = 15' 33" 58.6" (RT)$   
 $D = 5' 00" 00.0"$   
 $L = 311.33'$   
 $T = 156.63'$   
 $R = 1,445.92'$   
SE = SEE PLANS



**STA. 14+00.00 -L-**  
**BEGIN TIP PROJECT B-3496**

**STA. 22+00.00 -L- END TIP PROJECT B-3496**



PT. - PT.	BEARING	DIST.
8016-8017	N59°25'26"W	7.01'
8017-8016	N49°W49'E	4.46'
8076-8075	N37°17'45"E	9.53'
8075-8074	N12°29'14"E	4.28'
8074-8073	N47°31'26"W	15.07'

**DATUM DESCRIPTION**

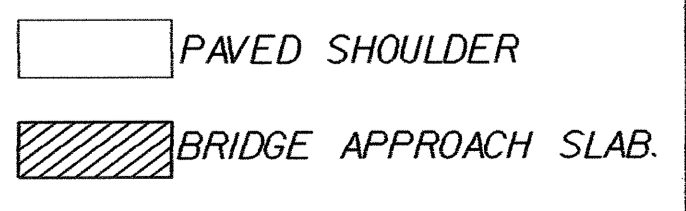
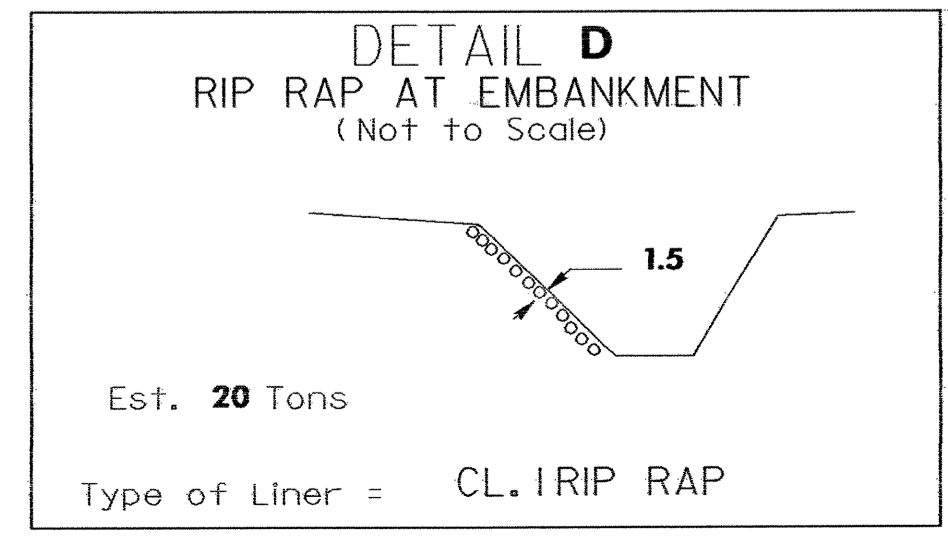
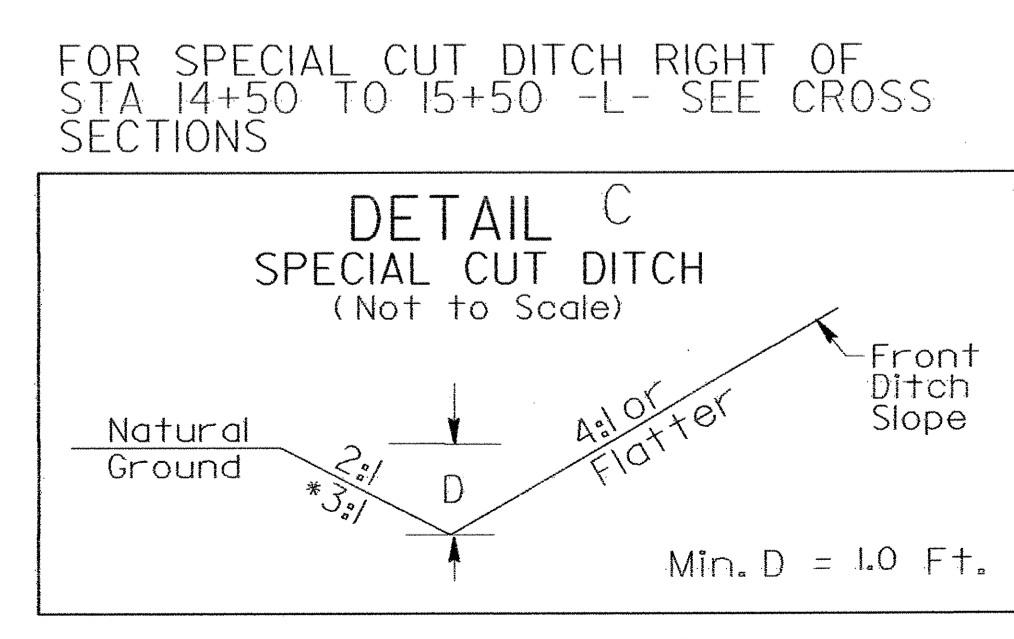
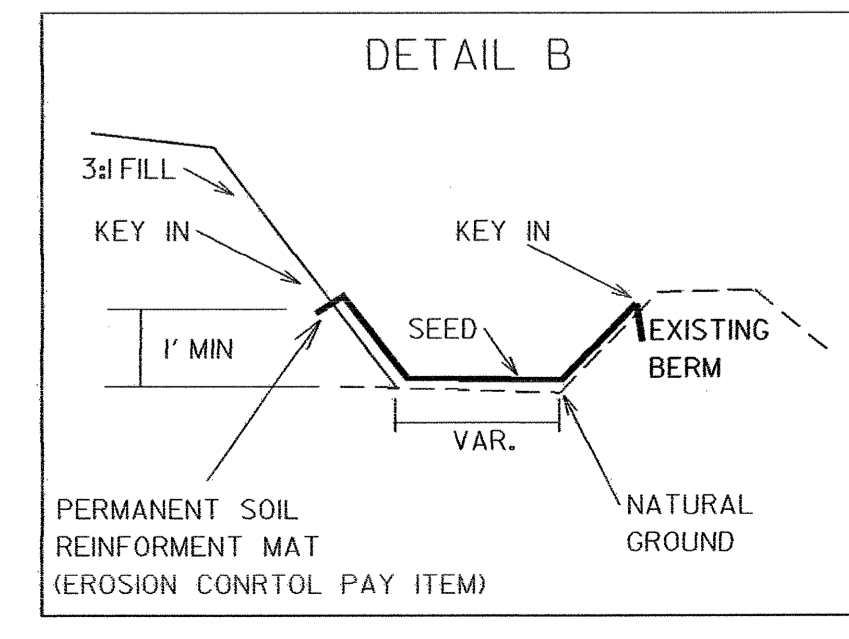
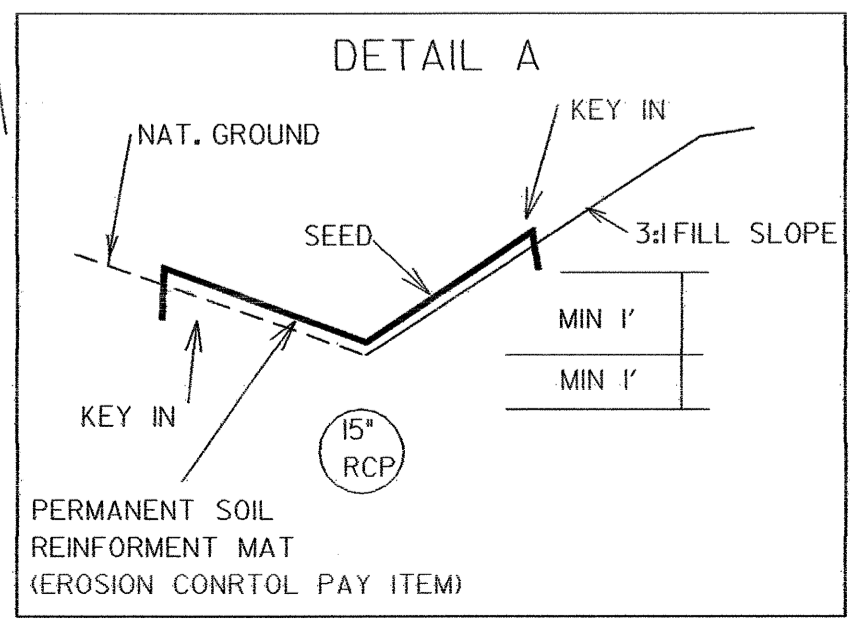
THE LOCALIZED COORDINATE SYSTEM DEVELOPED FOR THIS PROJECT IS BASED ON THE STATE PLANE COORDINATES ESTABLISHED BY NCDOT FOR MONUMENT "B3496-2"

WITH NAD 83 STATE PLANE GRID COORDINATES OF NORTHING: 173841.808(1) EASTING: 2348781.146(1)

THE AVERAGE COMBINED GRID FACTOR USED ON THIS PROJECT (GROUND TO GRID) IS: 1.000038649

THE N.C. LAMBERT GRID BEARING LOCALIZED HORIZONTAL GROUND DISTANCE FROM "B3496-2" TO -L- STATION 14+00.00 IS 5 42.07 2426 E DISTANCE 640.1185 FT.

ALL LINEAR DIMENSIONS ARE LOCALIZED HORIZONTAL DISTANCES VERTICAL DATUM USED IS NAVD 29



\* STA 14+50 TO 15+25 -L- L+  
STA 10+50 TO 11+35 -Y2- R+

FOR -L- & -Y2- PROFILE SEE SHEET 5  
FOR STRUCTURE PLANS SEE SHEET NO.