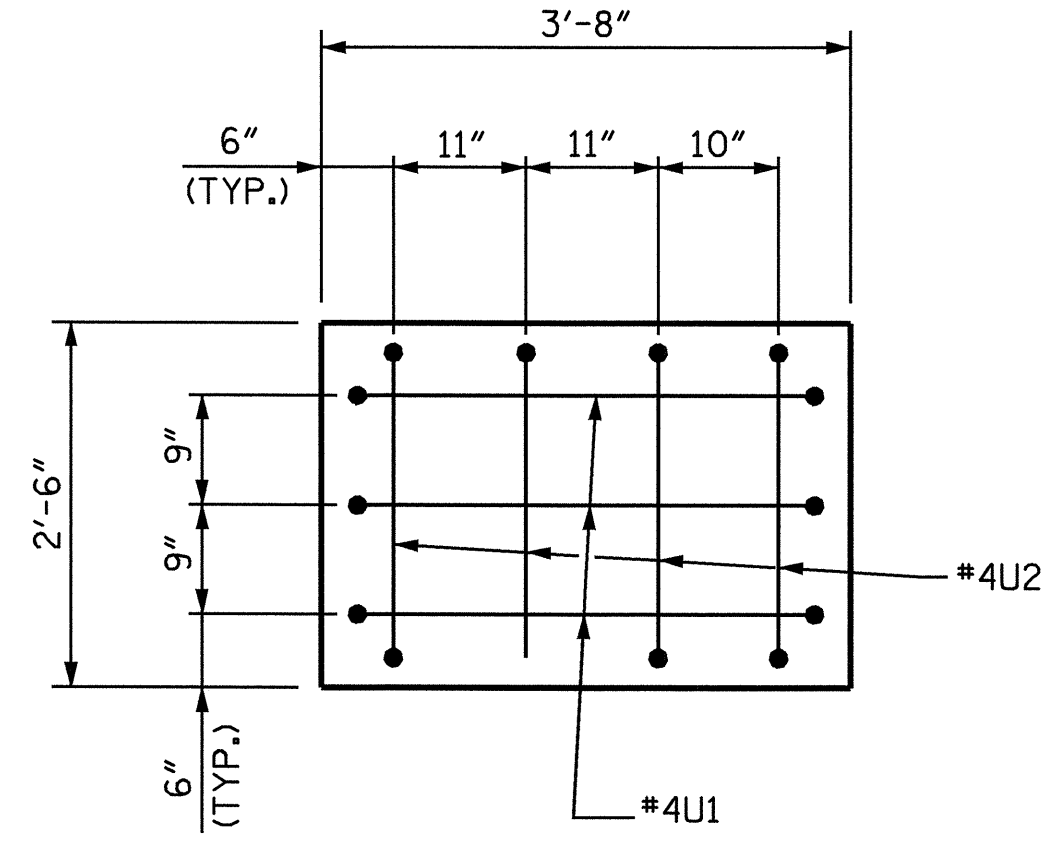
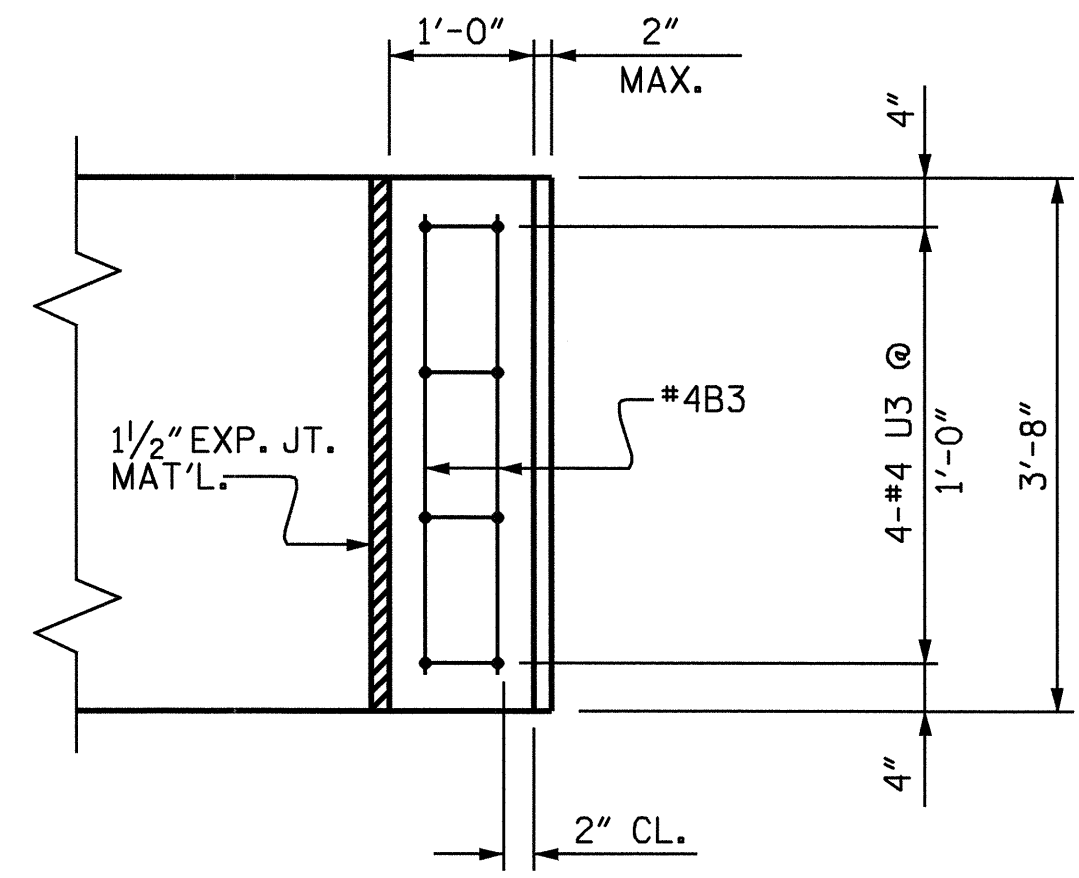


SECTION A-A

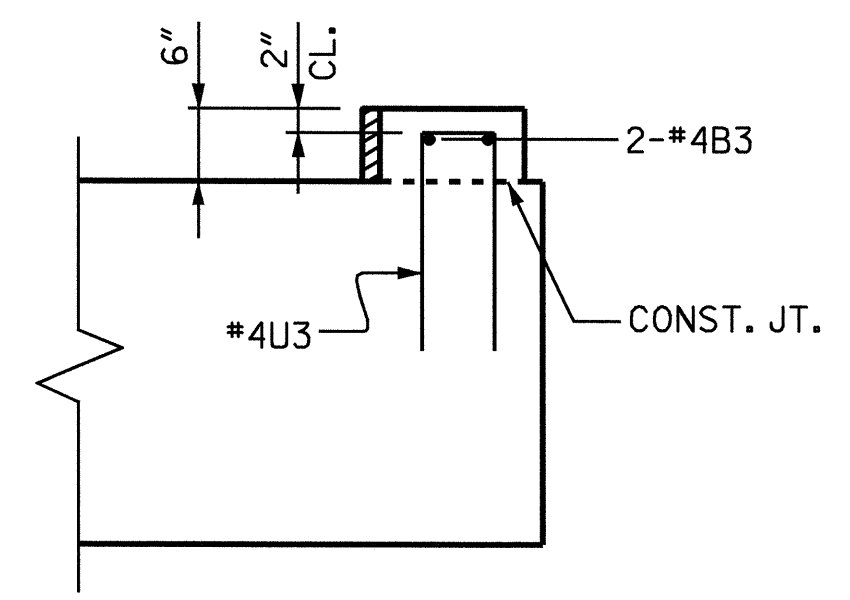


END VIEW OF CAP

2" MIN. CONCRETE COVER FROM END OF CAP REQUIRED FOR ALL #4 "U" BARS.
 #4 "U" BARS MAY BE SHIFTED UP TO 2" TO CLEAR "B" BARS.



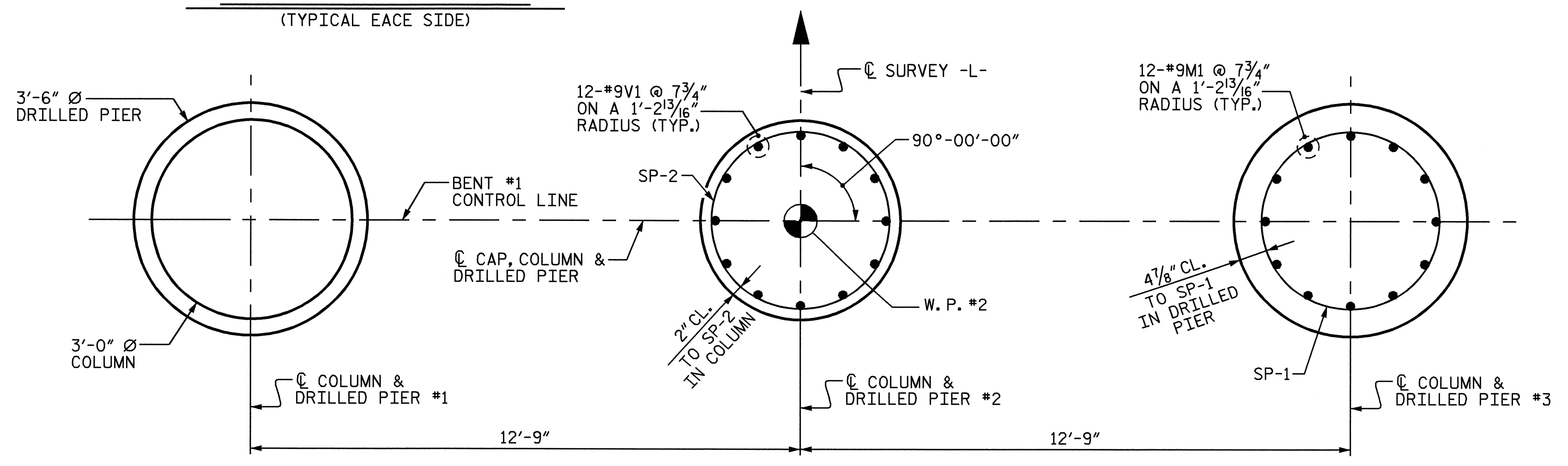
PLAN



ELEVATION

LATERAL GUIDE

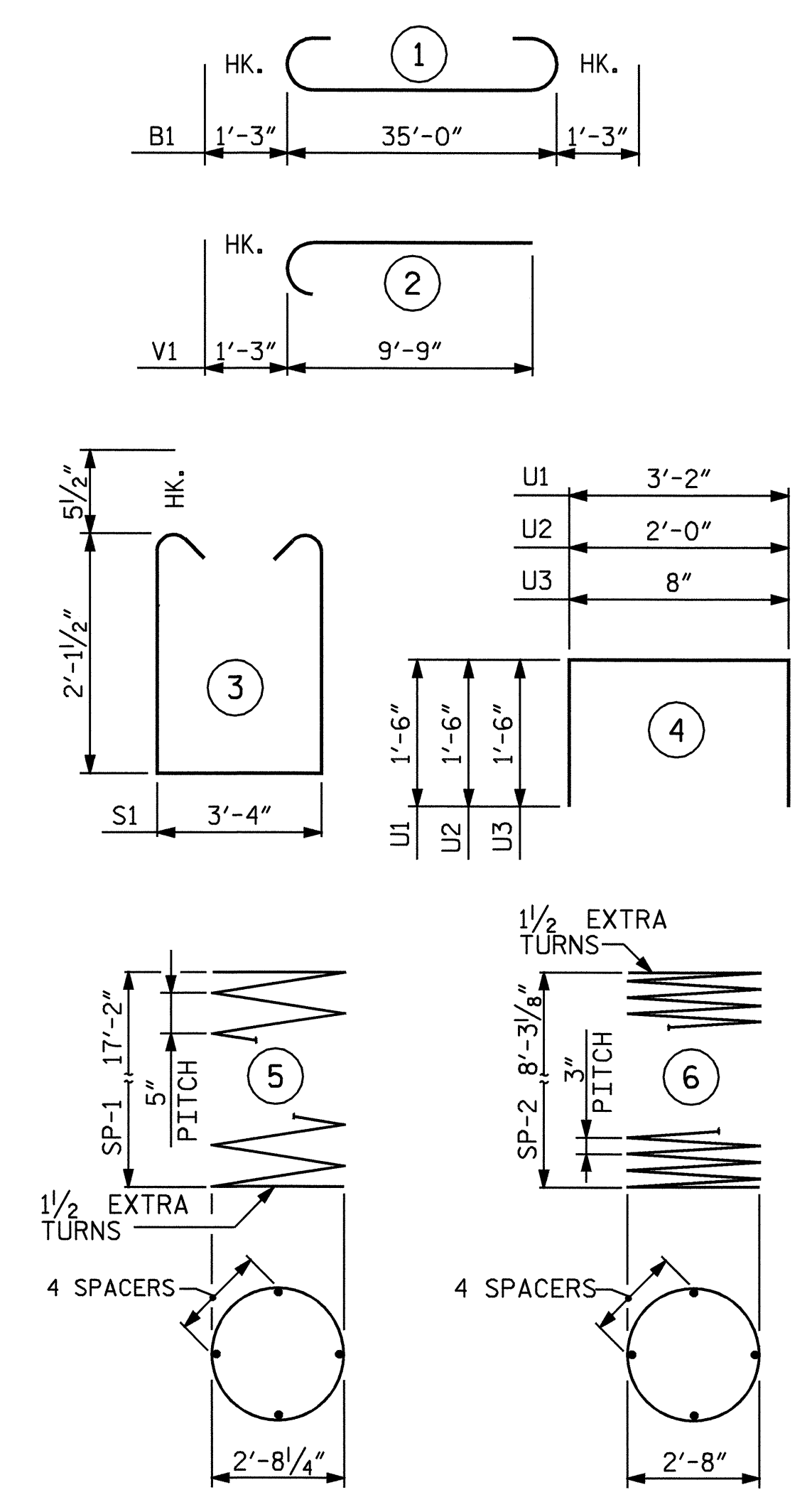
(TYPICAL FACE SIDE)



PLAN OF COLUMNS AND DRILLED PIERS

ALL COLUMNS AND DRILLED PIERS ARE IDENTICAL

BAR TYPES



ALL BAR DIMENSIONS ARE OUT TO OUT.

* THE SP-1 SPIRAL REINFORCING STEEL SHALL BE W31 OR D-31 COLD DRAWN WIRE OR #5 PLAIN OR DEFORMED BAR.
 ** THE SP-2 SPIRAL REINFORCING STEEL SHALL BE W20 OR D-20 COLD DRAWN WIRE OR #4 PLAIN OR DEFORMED BAR.

BILL OF MATERIAL

BENT #1					
BAR	NO.	SIZE	TYPE	LENGTH	WEIGHT
B1	10	#9		37'-6"	1275
B2	2	#5	STR	35'-2"	73
B3	4	#4	STR	3'-4"	9
D1	44	#6	STR	1'-6"	99
M1	36	#9	STR	24'-9"	3029
S1	30	#5		8'-6"	266
U1	6	#4		6'-2"	25
U2	8	#4		5'-0"	27
U3	8	#4		3'-8"	20
V1	36	#9		11'-0"	1346

REINFORCING STEEL = 6169 LBS					
SP-1	3	*	5	360'-9"	1129
SP-2	3	**	6	290'-10"	583
SPIRAL REINFORCING STEEL (LBS) 1712					
CLASS A CONCRETE (CU.YDS.)					
POUR 2 (COLUMNS)					
POUR 3 (CAP)					
POUR 4 (LATERAL GUIDE)					
TOTAL					

DRILLED PIERS

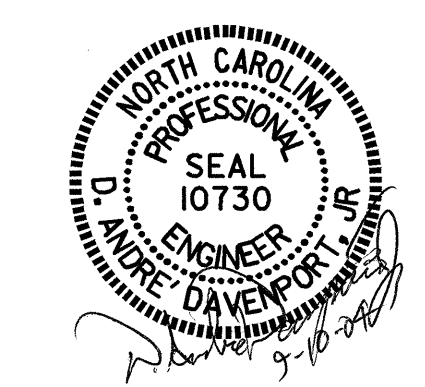
DRILLED PIER CONCRETE (CU.YDS.)	
POUR 1 (DRILLED PIERS)	18.7
3'-6" Ø DRILLED PIERS IN SOIL (LIN.FT.)	31.5
3'-6" Ø DRILLED PIERS NOT IN SOIL (LIN.FT.)	21
PERMANENT STEEL CASING FOR 3'-6" Ø DRILLED PIERS (LIN.FT.)	31.5
CSL TUBES (LIN.FT.)	240

PROJECT NO. B-4515
 FRANKLIN COUNTY
 STATION: 15+37.00 -L-

SHEET 2 OF 2

STATE OF NORTH CAROLINA
 DEPARTMENT OF TRANSPORTATION
 RALEIGH

SUBSTRUCTURE
 BENT #1



REVISIONS						SHEET NO.
NO.	BY:	DATE:	NO.	BY:	DATE:	S-15
1			3			TOTAL SHEETS
2			4			24

DRAWN BY: S. P. LAM DATE: 06-28-04
 CHECKED BY: H. T. BARBOUR DATE: 07-04