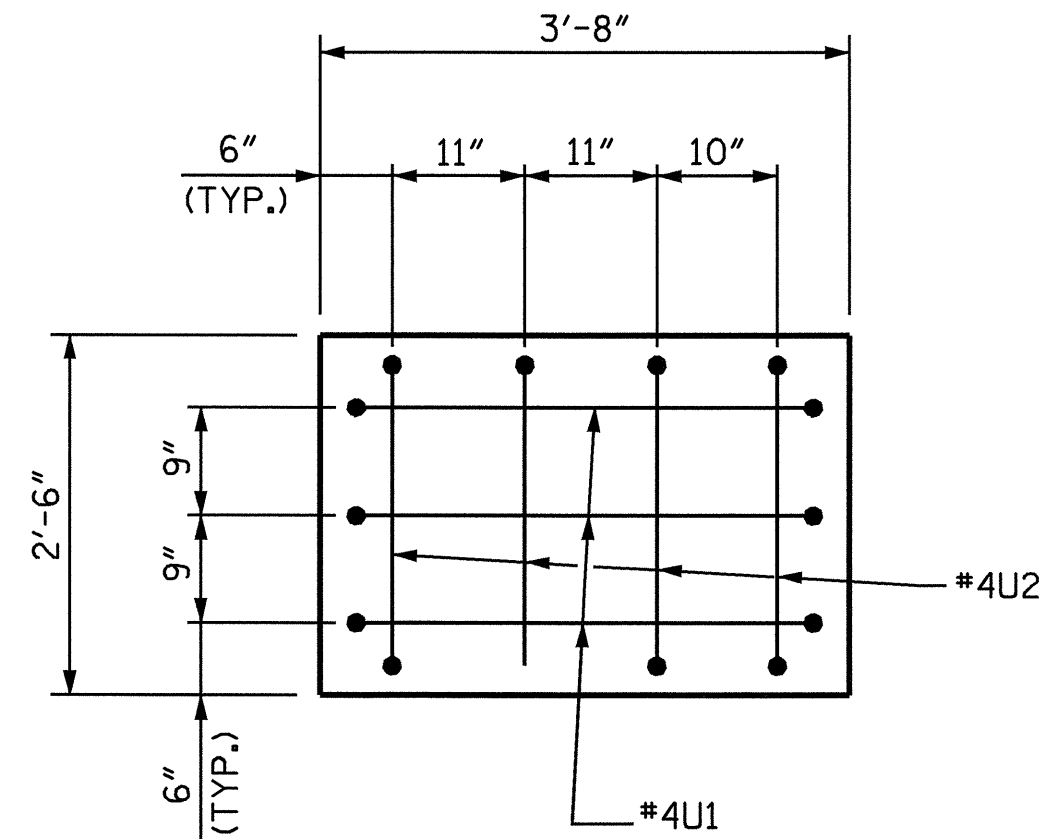


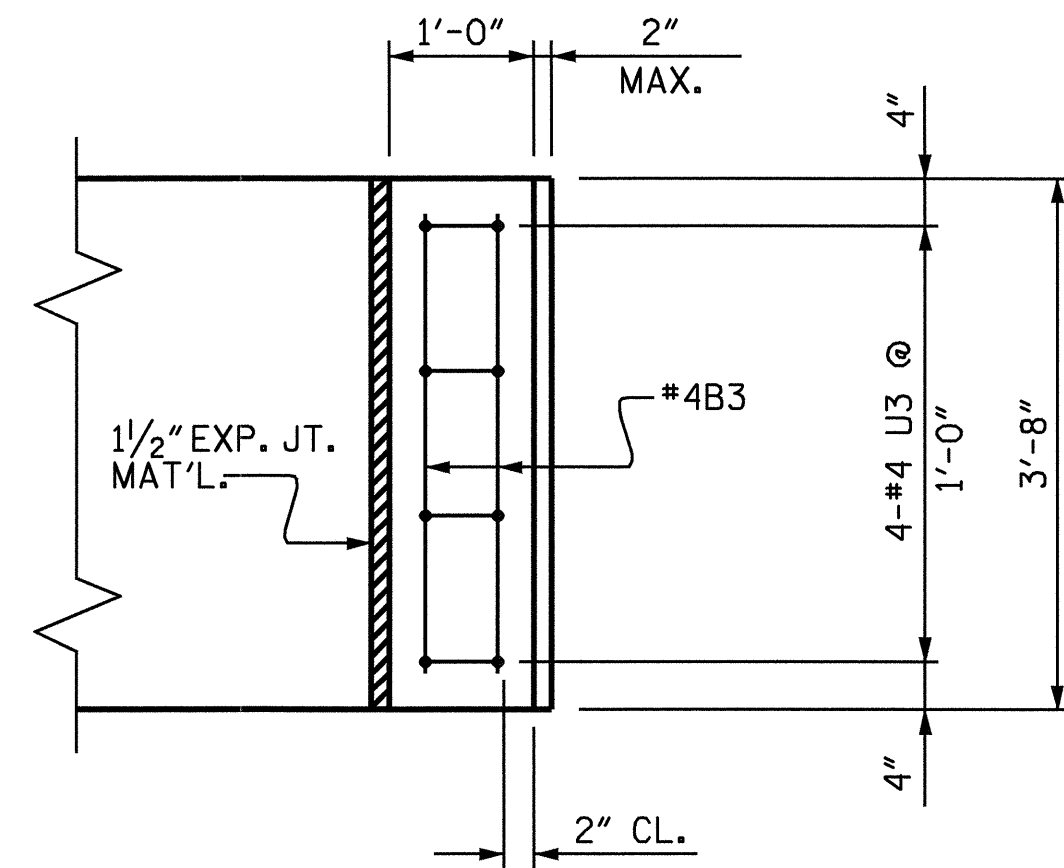
SECTION A-A



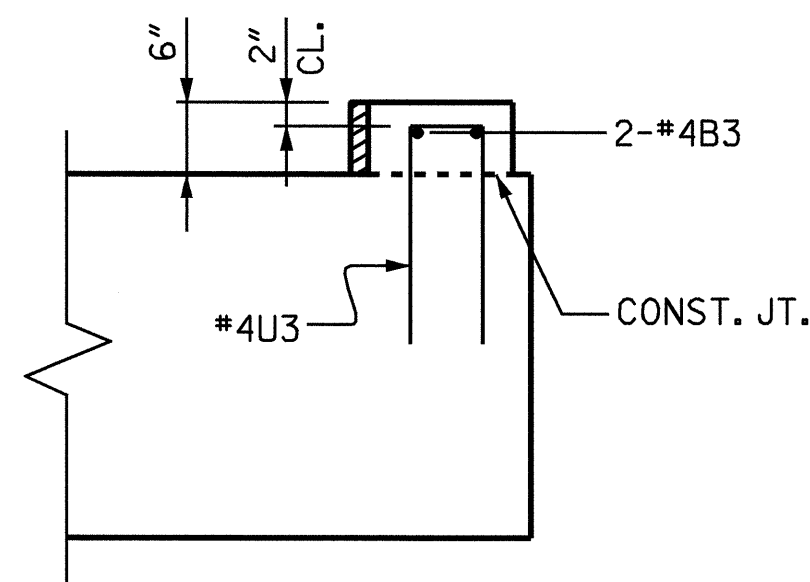
END VIEW OF CAP

2" MIN. CONCRETE COVER FROM END OF CAP REQUIRED FOR ALL #4 "U" BARS.

#4 "U" BARS MAY BE SHIFTED UP TO 2" TO CLEAR "B" BARS.



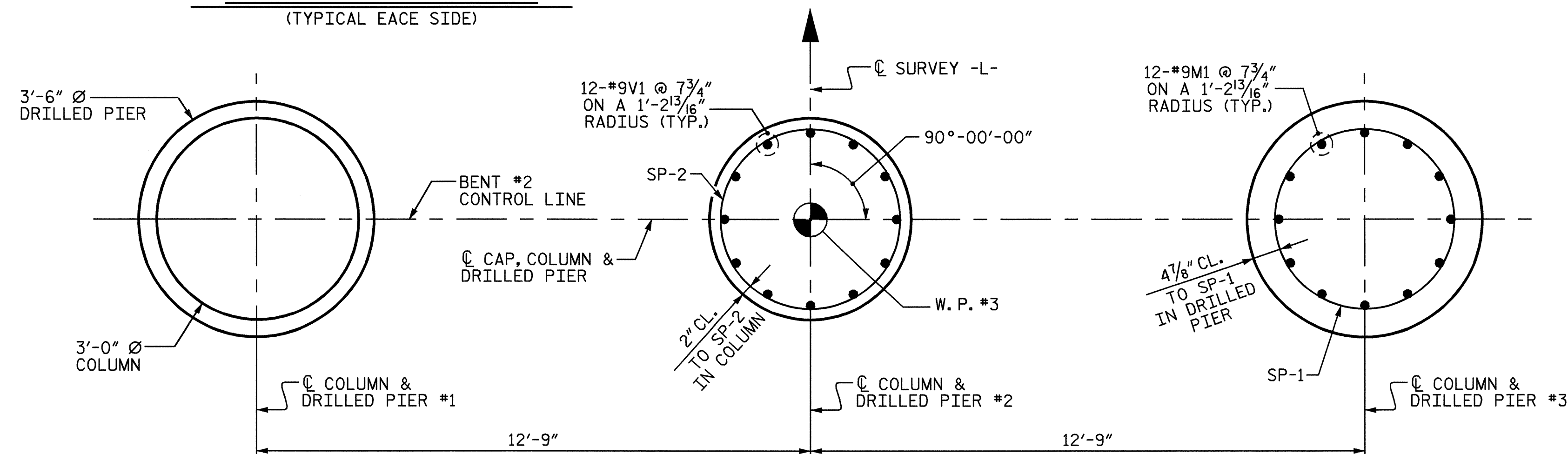
PLAN



ELEVATION

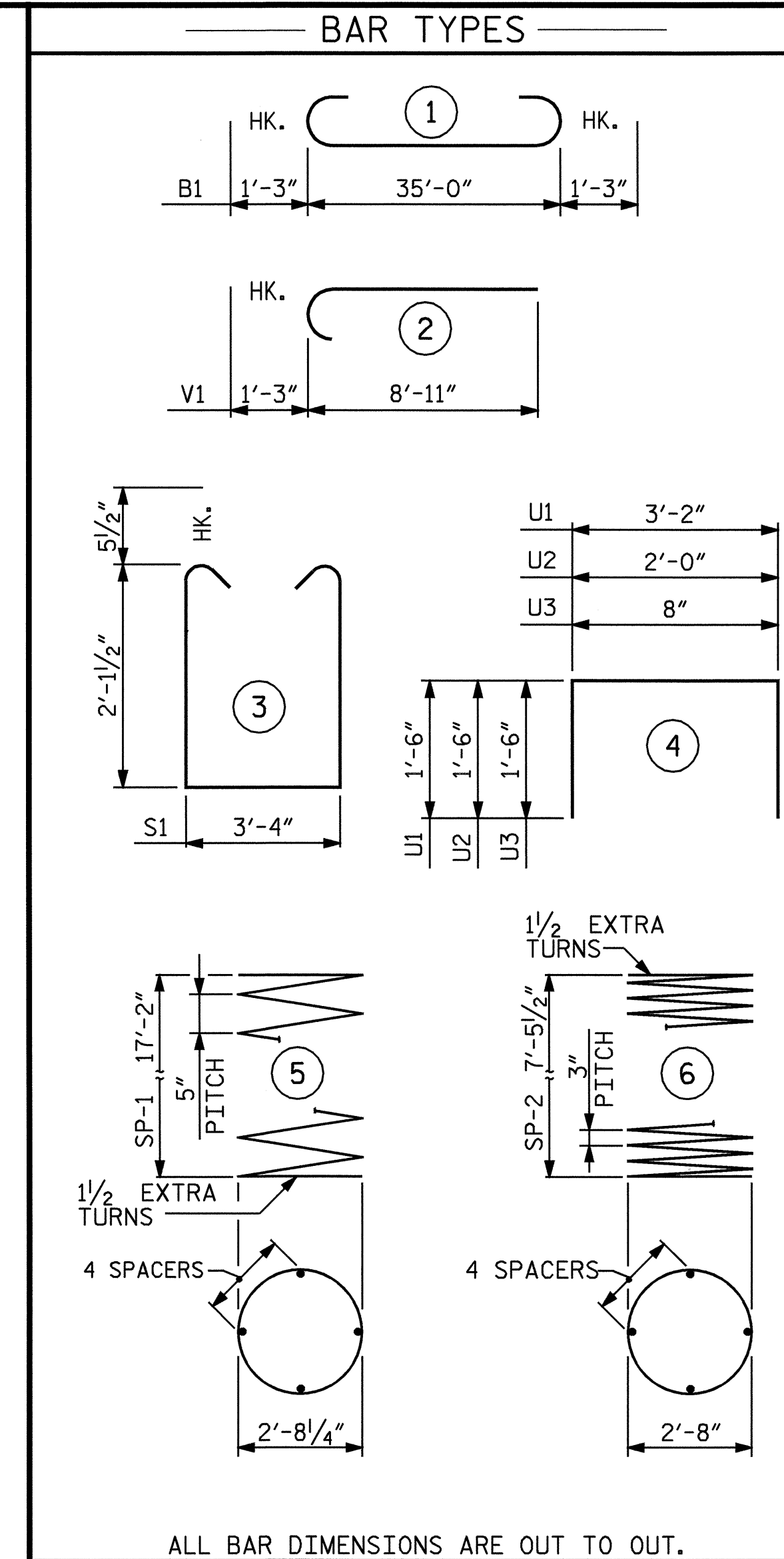
LATERAL GUIDE

(TYPICAL FACE SIDE)



PLAN OF COLUMNS AND DRILLED PIERS

ALL COLUMNS AND DRILLED PIERS ARE IDENTICAL



ALL BAR DIMENSIONS ARE OUT TO OUT.

* THE SP-1 SPIRAL REINFORCING STEEL SHALL BE W31 OR D-31 COLD DRAWN WIRE OR #5 PLAIN OR DEFORMED BAR.

** THE SP-2 SPIRAL REINFORCING STEEL SHALL BE W20 OR D-20 COLD DRAWN WIRE OR #4 PLAIN OR DEFORMED BAR.

BILL OF MATERIAL

BENT #2

BAR	NO.	SIZE	TYPE	LENGTH	WEIGHT
B1	10	#9	1	37'-6"	1275
B2	2	#5	STR	35'-2"	73
B3	4	#4	STR	3'-4"	9
D1	44	#6	STR	1'-6"	99
M1	36	#9	STR	24'-9"	3029
S1	30	#5	3	8'-6"	266
U1	6	#4	4	6'-2"	25
U2	8	#4	4	5'-0"	27
U3	8	#4	4	3'-8"	20
V1	36	#9	2	10'-2"	1244

REINFORCING STEEL = 6067 LBS

SP-1	3	*	5	360'-9"	1129
SP-2	3	**	6	263'-8"	528

SPIRAL REINFORCING STEEL (LBS) 1657

CLASS A CONCRETE (CU.YDS.)	5.7
POUR 2 (COLUMNS)	12.1
POUR 3 (CAP)	0.1
POUR 4 (LATERAL GUIDE)	17.9
TOTAL	

DRILLED PIERS

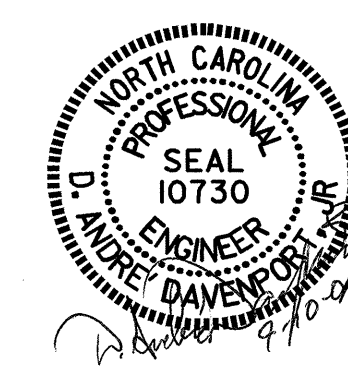
DRILLED PIER CONCRETE (CU.YDS.)	18.7
POUR 1 (DRILLED PIERS)	
3'-6" Ø DRILLED PIERS IN SOIL (LIN.FT.)	30.0
3'-6" Ø DRILLED PIERS NOT IN SOIL (LIN.FT.)	22.5
PERMANENT STEEL CASING FOR 3'-6" Ø DRILLED PIERS (LIN.FT.)	30.0
CROSSHOLE SONIC LOGGING CSL TUBES (LIN.FT.)	EA. 1 240

PROJECT NO. B-4515
FRANKLIN COUNTY
STATION: 15+37.00 -L-

SHEET 2 OF 2

STATE OF NORTH CAROLINA
DEPARTMENT OF TRANSPORTATION
RALEIGH

SUBSTRUCTURE
BENT #2



REVISIONS

NO.	BY:	DATE:	NO.	BY:	DATE:	SHEET NO.
1			3			S-17
2			4			TOTAL SHEETS 24

DRAWN BY: S. P. LAM DATE: 06-28-04
CHECKED BY: H. T. BARBOUR DATE: 07-04