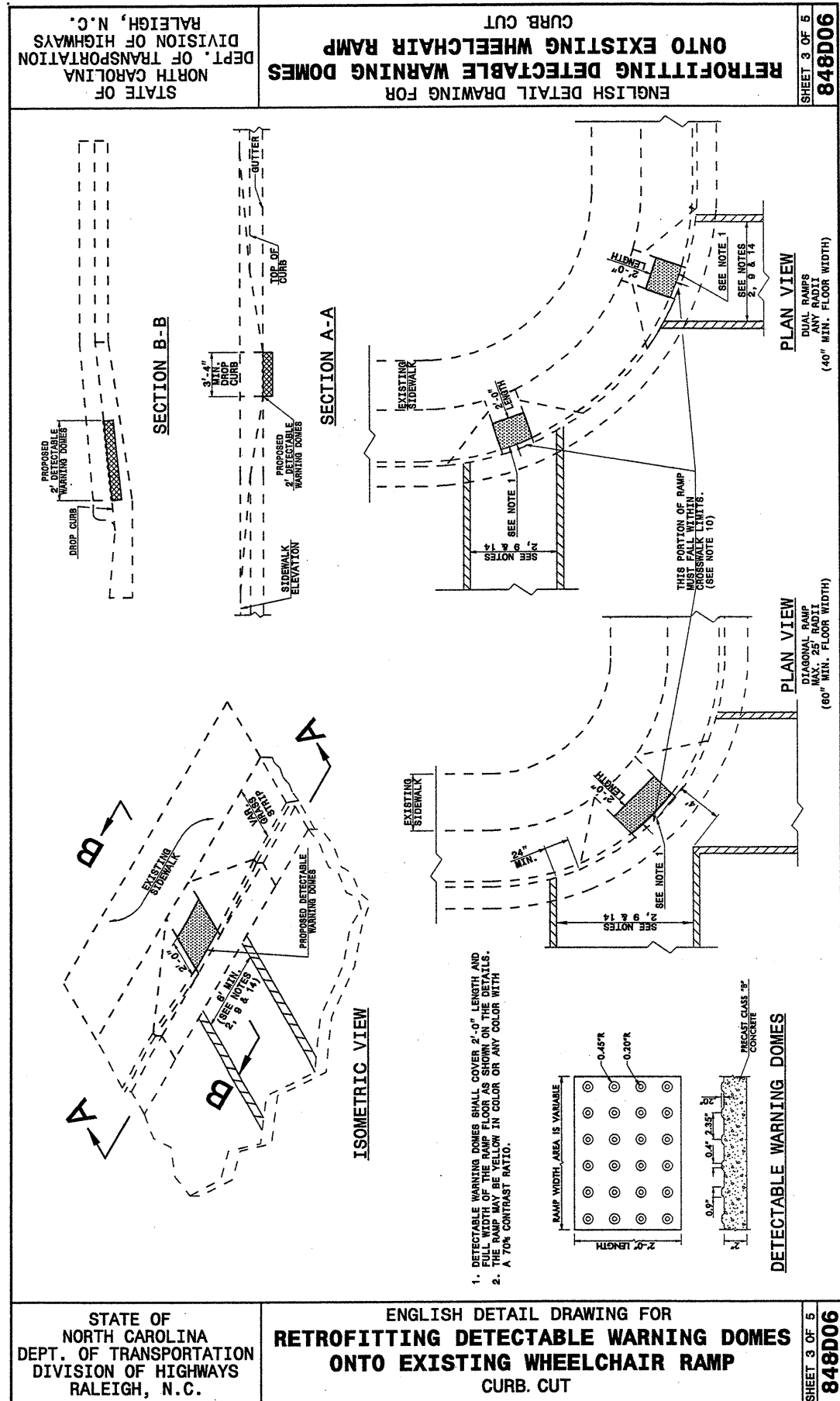


25-OCT-2004 11:21  
 C:\Special Details\ward\stds\02\stds to Special Details\english\84806\0848d06.dgn  
 ericward AT 05212260



STATE OF NORTH CAROLINA  
 DEPT. OF TRANSPORTATION  
 DIVISION OF HIGHWAYS  
 RALEIGH, N.C.

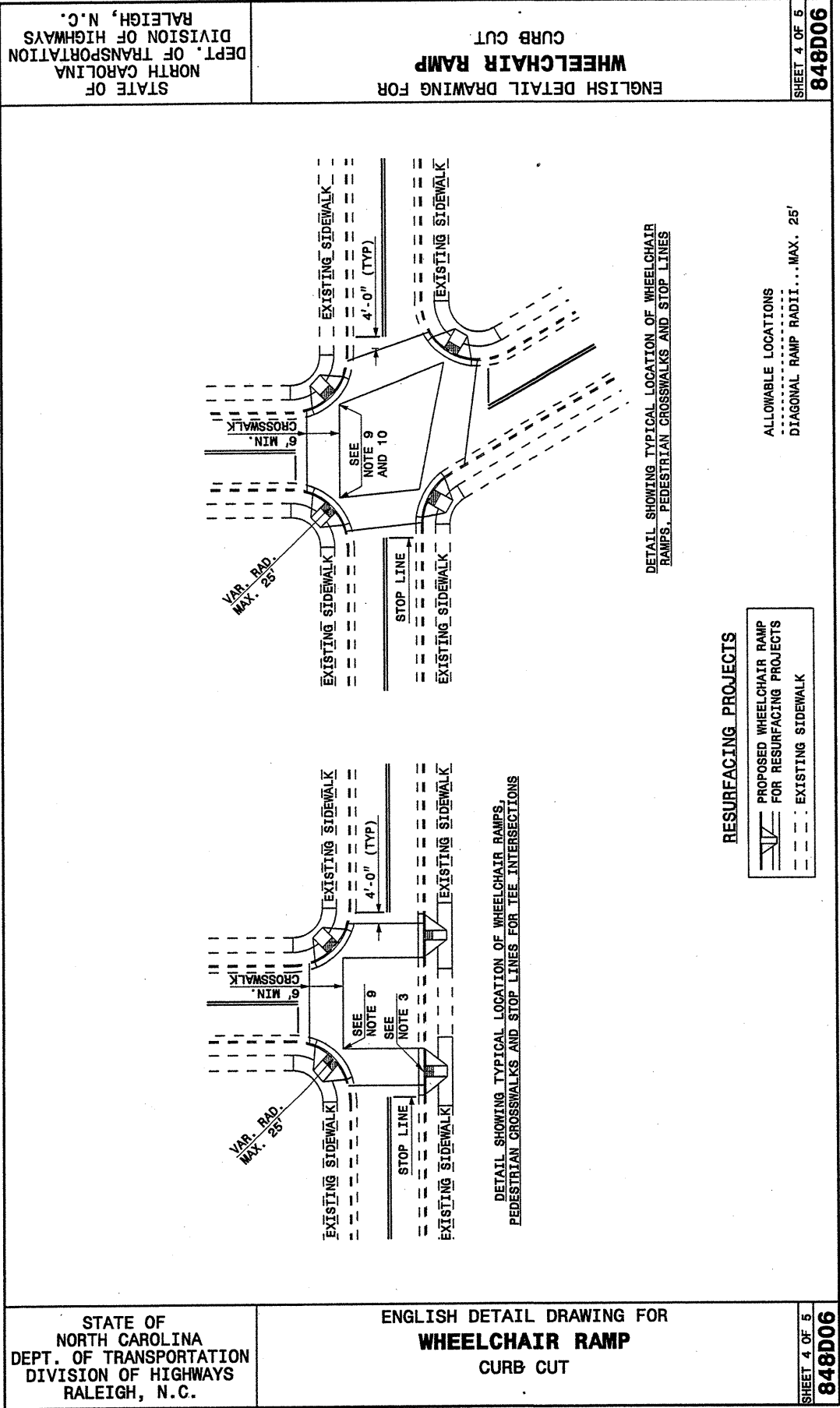
ENGLISH DETAIL DRAWING FOR  
**RETROFITTING DETECTABLE WARNING DOMES  
 ONTO EXISTING WHEELCHAIR RAMP**  
 CURB CUT

SHEET 3 OF 5  
**848D06**

STATE OF NORTH CAROLINA  
 DEPT. OF TRANSPORTATION  
 DIVISION OF HIGHWAYS  
 RALEIGH, N.C.

ENGLISH DETAIL DRAWING FOR  
**RETROFITTING DETECTABLE WARNING DOMES  
 ONTO EXISTING WHEELCHAIR RAMP**  
 CURB CUT

SHEET 3 OF 5  
**848D06**



STATE OF NORTH CAROLINA  
 DEPT. OF TRANSPORTATION  
 DIVISION OF HIGHWAYS  
 RALEIGH, N.C.

ENGLISH DETAIL DRAWING FOR  
**WHEELCHAIR RAMP**  
 CURB CUT

SHEET 4 OF 5  
**848D06**

STATE OF NORTH CAROLINA  
 DEPT. OF TRANSPORTATION  
 DIVISION OF HIGHWAYS  
 RALEIGH, N.C.

ENGLISH DETAIL DRAWING FOR  
**WHEELCHAIR RAMP**  
 CURB CUT

SHEET 4 OF 5  
**848D06**

**RESURFACING PROJECTS**  
 PROPOSED WHEELCHAIR RAMP FOR RESURFACING PROJECTS  
 EXISTING SIDEWALK

DETAIL SHOWING TYPICAL LOCATION OF WHEELCHAIR RAMP, PEDESTRIAN CROSSWALKS AND STOP LINES

DETAIL SHOWING TYPICAL LOCATION OF WHEELCHAIR RAMP, PEDESTRIAN CROSSWALKS AND STOP LINES FOR TEE INTERSECTIONS

PROJECT SERVICES UNIT  
 STANDARDS AND SPECIAL DESIGN  
 Office 919-250-4128 FAX 919-250-4119

**SEE PLATE FOR TITLE**

ORIGINAL BY: DETAIL 848D05 DATE: \_\_\_\_\_  
 MODIFIED BY: E.E. WARD DATE: 06-18-03  
 CHECKED BY: \_\_\_\_\_ DATE: \_\_\_\_\_  
 FILE SPEC.: usr/stds/02todetail/english/84806/848d06.dgn