

NOTES

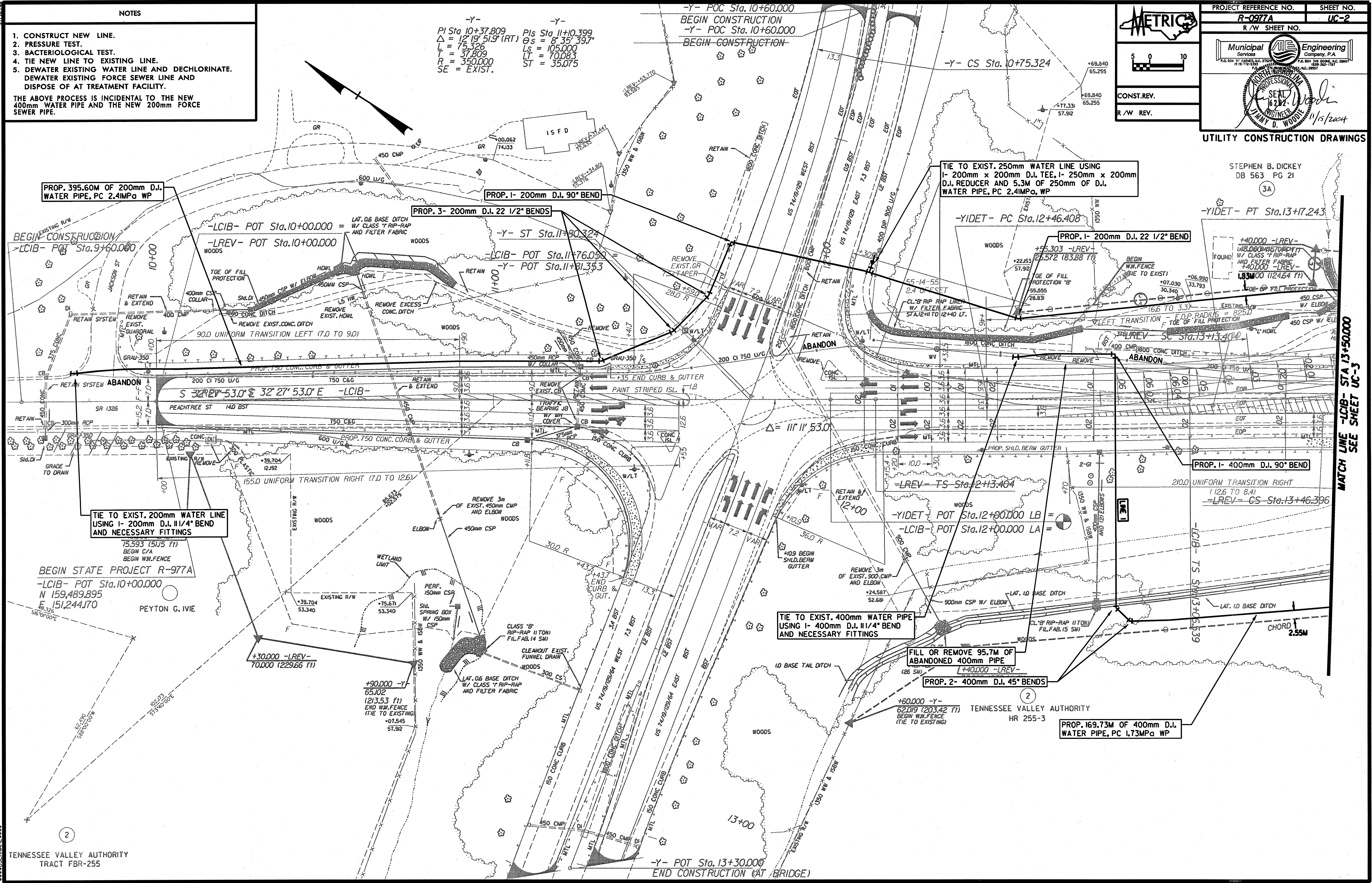
1. CONSTRUCT NEW LINE.
2. PRESSURE TEST.
3. BACTERIOLOGICAL TEST.
4. TIE NEW LINE TO EXISTING LINE.
5. DEWATER EXISTING WATER LINE AND DECHLORINATE. DEWATER EXISTING FORCE SEWER LINE AND DISPOSE OF AT TREATMENT FACILITY.

THE ABOVE PROCESS IS INCIDENTAL TO THE NEW 400mm WATER PIPE AND THE NEW 200mm FORCE SEWER PIPE.

-Y- -Y-
 PI Sta 10+37.809 Pls Sta 11+10.399
 $\Delta = 12' 19" 51.9 (RT)$ $\theta_s = 8' 35" 39.7$
 $L = 75.326$ $L_s = 105.000$
 $T = 37.809$ $LT = 70.083$
 $R = 350.000$ $ST = 35.075$
 SE = EXIST.

PROJECT REFERENCE NO. R-0977A SHEET NO. UC-2
 R/W SHEET NO.
 Municipal Engineering Services Company, P.A.
 P.O. Box 317, Cary, NC 27513 P.O. Box 348, Boone, NC 28607
 (919) 272-2333 (919) 286-1157
 PROFESSIONAL SEAL
 JIMMY D. WOODIE
 1/15/2004
 CONST. REV.
 R/W REV.
 UTILITY CONSTRUCTION DRAWINGS

STEPHEN B. DICKEY
 DB 563 PG 21
 (3A)



PROP. 395.60M OF 200mm D.I. WATER PIPE, PC 2.4IMP_g WP

PROP. 1- 200mm D.I. 90° BEND

PROP. 3- 200mm D.I. 22 1/2° BENDS

TIE TO EXIST. 250mm WATER LINE USING 1- 200mm x 200mm D.I. TEE, 1- 250mm x 200mm D.I. REDUCER AND 5.3M OF 250mm OF D.I. WATER PIPE, PC 2.4IMP_g WP

PROP. 1- 200mm D.I. 22 1/2° BEND

TIE TO EXIST. 200mm WATER LINE USING 1- 200mm D.I. 11/4° BEND AND NECESSARY FITTINGS

TIE TO EXIST. 400mm WATER PIPE USING 1- 400mm D.I. 11/4° BEND AND NECESSARY FITTINGS

FILL OR REMOVE 95.7M OF ABANDONED 400mm PIPE

PROP. 169.73M OF 400mm D.I. WATER PIPE, PC 1.73MP_g WP

BEGIN STATE PROJECT R-977A
 -LCIB- POT Sta. 10+00.000
 N 159,489.895
 E 151,244.170
 PEYTON G. IVIE

TENNESSEE VALLEY AUTHORITY
 TRACT FBR-255

MATCH LINE -LCIB- STA 13+50.000 SEE SHEET UC-3