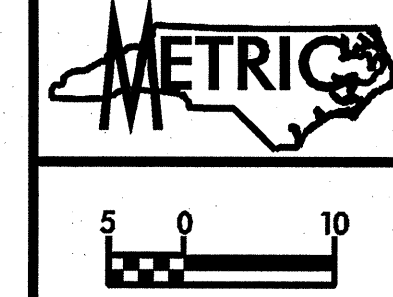


NOTES

1. CONSTRUCT NEW LINE.
2. PRESSURE TEST.
3. BACTERIOLOGICAL TEST.
4. TIE NEW LINE TO EXISTING LINE.
5. DEWATER EXISTING WATER LINE AND DECHLORINATE. DEWATER EXISTING FORCE SEWER LINE AND DISPOSE OF AT TREATMENT FACILITY.

THE ABOVE PROCESS IS INCIDENTAL TO THE NEW 400mm WATER PIPE AND THE NEW 200mm FORCE SEWER PIPE.



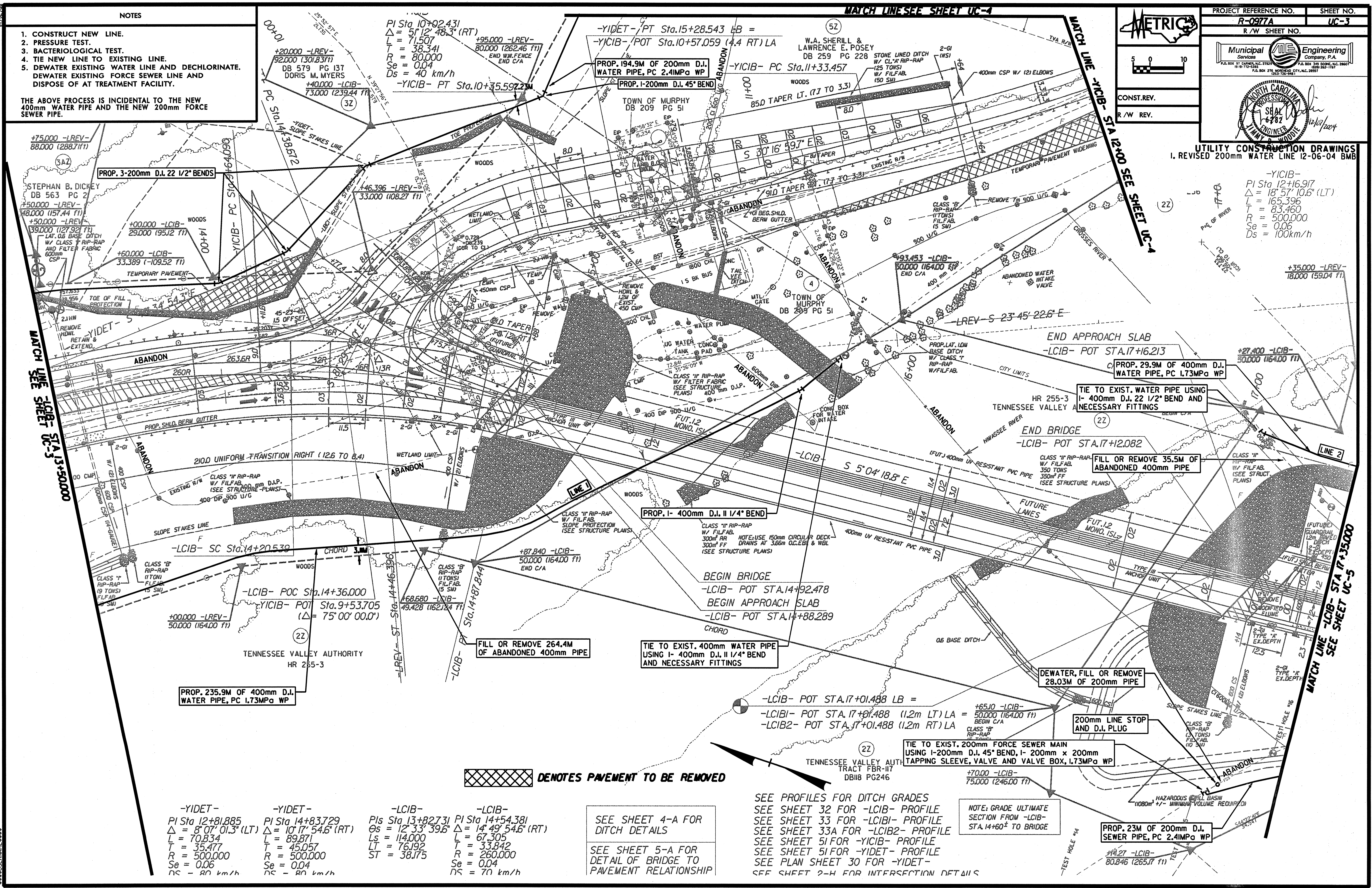
PROJECT REFERENCE NO. R-0977A SHEET NO. UC-3
 R/W SHEET NO. UC-3

Municipal Engineering Services
 P.O. BOX 371 CARRINGTON, N.C. 27529
 P.O. BOX 342 BOONE, N.C. 28601
 P.O. BOX 276 MORSEDALE CITY, N.C. 28557

Professional Engineer
 JIMMY R. MOULDER
 No. 12172
 State of North Carolina
 12/17/2004

UTILITY CONSTRUCTION DRAWINGS
 I. REVISED 200mm WATER LINE 12-06-04 BMB

-YICIB-
 PI Sta. 12+16.917
 $\Delta = 18' 57" 10.6" (LT)$
 $L = 165.396$
 $T = 83.460$
 $R = 500.000$
 $Se = 0.06$
 $Ds = 100km/h$



| | | | |
|---|--|--|---|
| -YIDET- PI Sta 12+81.885 $\Delta = 8' 07" 01.3" (LT)$ $L = 70.834$ $T = 35.477$ $R = 500.000$ $Se = 0.06$ $Ds = 80 km/h$ | -YIDET- PI Sta 14+83.729 $\Delta = 10' 17" 54.6" (RT)$ $L = 89.871$ $T = 45.057$ $R = 500.000$ $Se = 0.04$ $Ds = 80 km/h$ | -LCIB- PIs Sta 13+82.731 $\Theta_s = 12' 33" 39.6"$ $L_s = 114.000$ $LT = 76.192$ $ST = 38.175$ | -LCIB- PI Sta 14+54.381 $\Delta = 14' 49" 54.6" (RT)$ $L = 67.305$ $T = 33.842$ $R = 260.000$ $Se = 0.04$ $Ds = 70 km/h$ |
|---|--|--|---|

SEE SHEET 4-A FOR DITCH DETAILS
 SEE SHEET 5-A FOR DETAIL OF BRIDGE TO PAVEMENT RELATIONSHIP

SEE PROFILES FOR DITCH GRADES
 SEE SHEET 32 FOR -LCIB- PROFILE
 SEE SHEET 33 FOR -LCIB1- PROFILE
 SEE SHEET 33A FOR -LCIB2- PROFILE
 SEE SHEET 51 FOR -YICIB- PROFILE
 SEE SHEET 51 FOR -YIDET- PROFILE
 SEE PLAN SHEET 30 FOR -YIDET-
 SEE SHEET 2-H FOR INTERSECTION DETAILS

DENOTES PAVEMENT TO BE REMOVED

NOTE: GRADE ULTIMATE SECTION FROM -LCIB- STA. 14+60± TO BRIDGE

PROP. 23M OF 200mm D.I. SEWER PIPE, PC 2.4IMP_a WP

DATE PLOTTED: 12/17/2004 10:58:33 AM