

NOTE:
 ALL PROPOSED UTILITY WORK SHOWN ON THIS SHEET WILL BE DONE BY OTHERS

SEE SHEET 4-A FOR DITCH DETAILS

SEE SHEET 2-H FOR INTERSECTION DETAILS
 SEE PROFILES FOR DITCH GRADES

NOTE: -Y- LINE EXISTING PAVEMENT TO BE RESURFACED WITH 30MM S9.5B

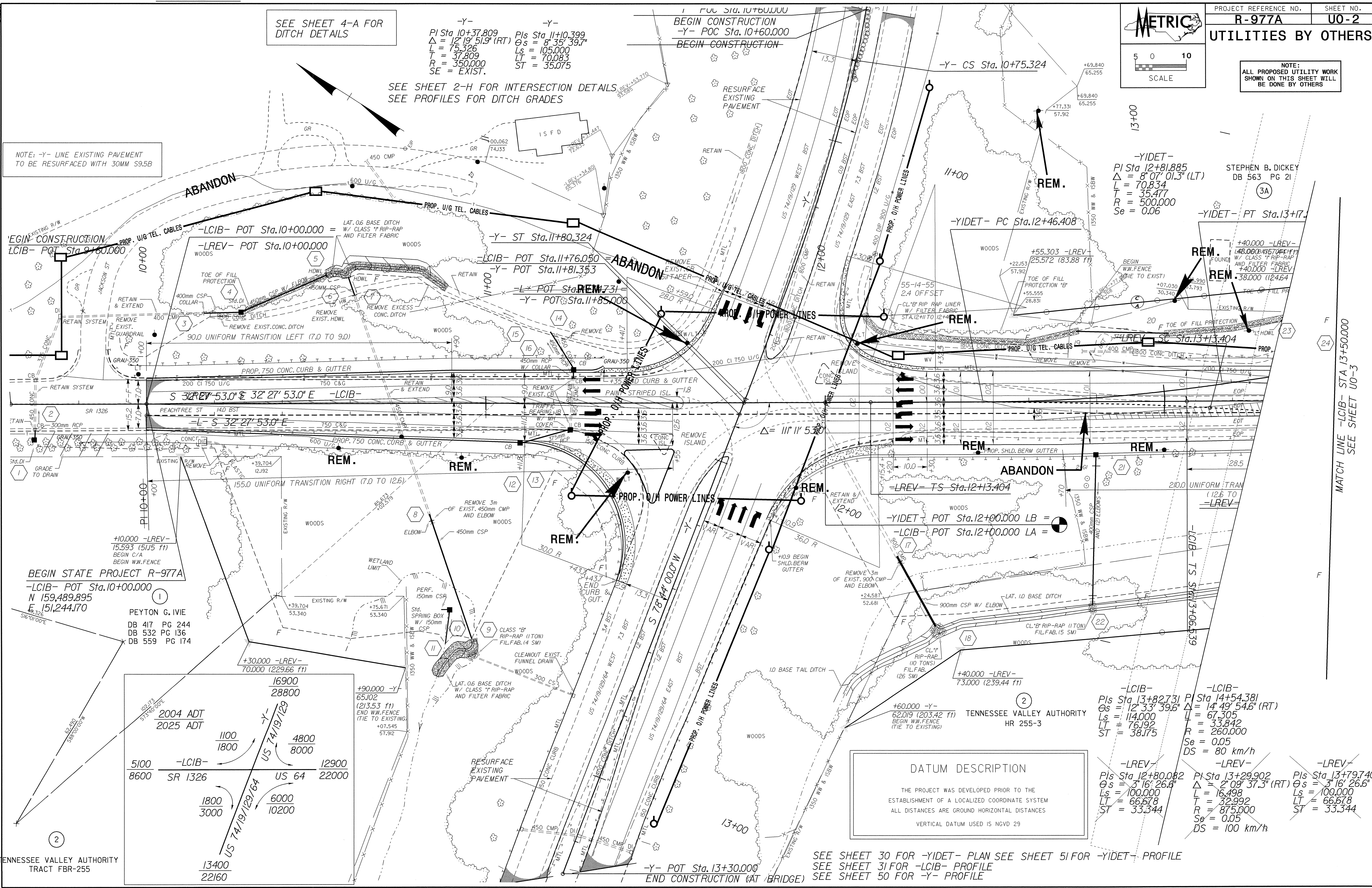
-Y-
 PI Sta 10+37.809
 $\Delta = 12^{\circ} 19' 51.9" (RT)$
 $L = 75.326$
 $T = 37.809$
 $R = 350.000$
 $SE = EXIST.$

-Y-
 PIs Sta 11+10.399
 $\Delta = 8^{\circ} 35' 39.7"$
 $Ls = 105.000$
 $LT = 70.063$
 $ST = 35.075$

1 POC STA. 10+60.000
 BEGIN CONSTRUCTION
 -Y- POC STA. 10+60.000
 BEGIN CONSTRUCTION

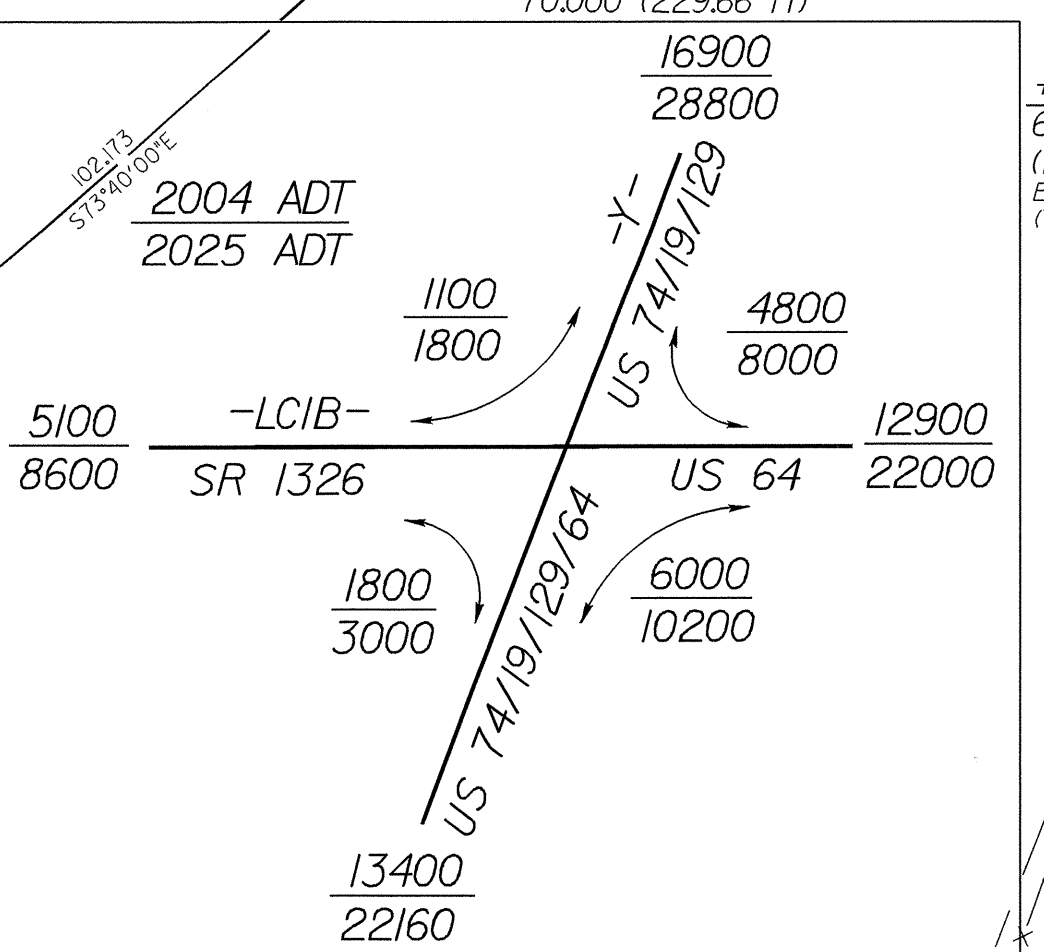
-YIDET-
 PI Sta 12+81.885
 $\Delta = 8^{\circ} 07' 01.3" (LT)$
 $L = 70.834$
 $L = 35.477$
 $R = 500.000$
 $Se = 0.06$

STEPHEN B. DICKEY
 DB 563 PG 21
 (3A)



BEGIN STATE PROJECT R-977A
 -LCIB- POT Sta. 10+00.000
 N 159,489.895
 E 151,244.170

PEYTON G. IVIE
 DB 417 PG 244
 DB 532 PG 136
 DB 559 PG 174



DATUM DESCRIPTION
 THE PROJECT WAS DEVELOPED PRIOR TO THE ESTABLISHMENT OF A LOCALIZED COORDINATE SYSTEM
 ALL DISTANCES ARE GROUND HORIZONTAL DISTANCES
 VERTICAL DATUM USED IS NGVD 29

-LCIB-
 PIs Sta 13+82.731
 $\Delta = 12^{\circ} 33' 39.6"$
 $Ls = 114.000$
 $LT = 76.192$
 $ST = 38.175$

-LCIB-
 PI Sta 14+54.381
 $\Delta = 14^{\circ} 49' 54.6" (RT)$
 $L = 67.305$
 $L = 33.842$
 $R = 260.000$
 $Se = 0.05$
 $DS = 80 \text{ km/h}$

-LREV-
 PIs Sta 12+80.082
 $\Delta = 3^{\circ} 16' 26.6"$
 $Ls = 100.000$
 $LT = 66.678$
 $ST = 33.344$

-LREV-
 PI Sta 13+29.902
 $\Delta = 2^{\circ} 09' 37.3" (RT)$
 $L = 16.498$
 $T = 32.992$
 $R = 875.000$
 $Se = 0.05$
 $DS = 100 \text{ km/h}$

-LREV-
 PIs Sta 13+79.740
 $\Delta = 3^{\circ} 16' 26.6"$
 $Ls = 100.000$
 $LT = 66.678$
 $ST = 33.344$

SEE SHEET 30 FOR -YIDET- PLAN SEE SHEET 51 FOR -YIDET- PROFILE
 SEE SHEET 31 FOR -LCIB- PROFILE
 SEE SHEET 50 FOR -Y- PROFILE

MATCH LINE -LCIB- STA 13+50.000
 SEE SHEET U0-3

04252
 15 NOV 2014 09:05
 R:\Users\Terry\Public\100977.RD\PSH04.dwg
 T:\DB\111111