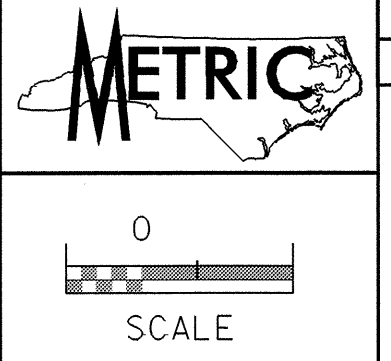


REVISIONS



PROJECT REFERENCE NO. SHEET NO.

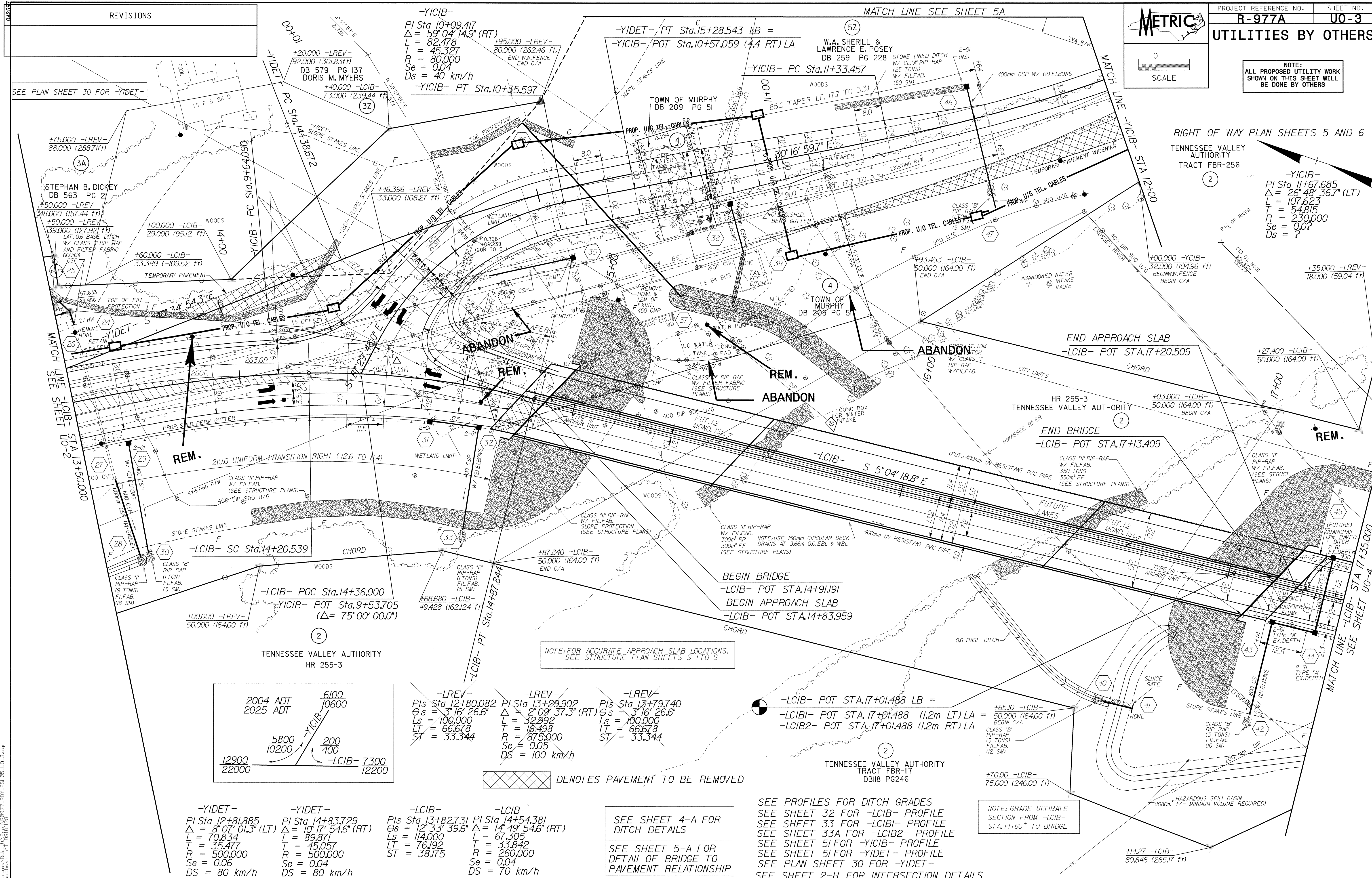
R-977A UO-3

UTILITIES BY OTHERS

NOTE: ALL PROPOSED UTILITY WORK SHOWN ON THIS SHEET WILL BE DONE BY OTHERS

RIGHT OF WAY PLAN SHEETS 5 AND 6 TENNESSEE VALLEY AUTHORITY TRACT FBR-256

-YICIB- PI Sta 11+67.685 Δ = 26° 48' 36.7" (LT) L = 107.623 T = 54.815 R = 230.000 Se = 0.0? Ds = ?



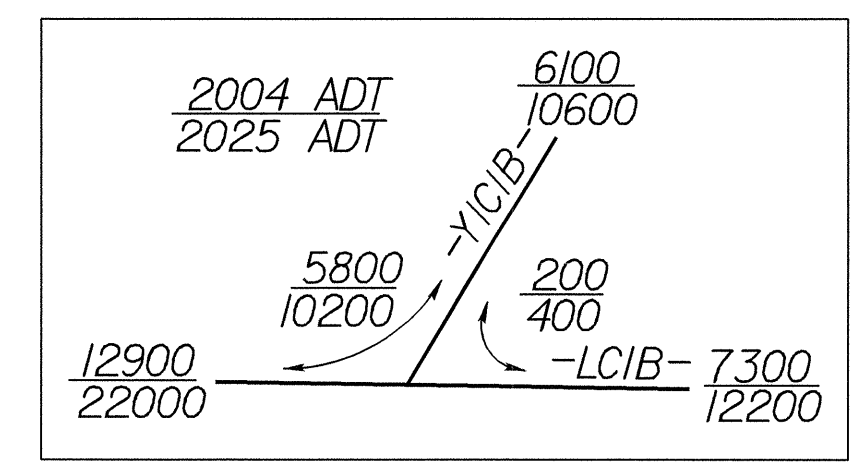
SEE PLAN SHEET 30 FOR -YIDET-

MATCH LINE SEE SHEET UO-2

MATCH LINE SEE SHEET UO-4

NOTE: FOR ACCURATE APPROACH SLAB LOCATIONS. SEE STRUCTURE PLAN SHEETS S-1 TO S-5

NOTE: GRADE ULTIMATE SECTION FROM -LCIB- STA. 14+60± TO BRIDGE



-LREY- PIs Sta 12+80.082 Δ = 2° 09' 37.3" (RT) Ls = 100.000 T = 16.498 R = 875.000 Se = 0.05 Ds = 100 km/h

-LCIB- POT STA. 17+01.488 LB = -LCIB1- POT STA. 17+01.488 (1.2m LT) LA = -LCIB2- POT STA. 17+01.488 (1.2m RT) LA

DENOTES PAVEMENT TO BE REMOVED

SEE SHEET 4-A FOR DITCH DETAILS

SEE SHEET 5-A FOR DETAIL OF BRIDGE TO PAVEMENT RELATIONSHIP

SEE PROFILES FOR DITCH GRADES SEE SHEET 32 FOR -LCIB- PROFILE SEE SHEET 33 FOR -LCIB1- PROFILE SEE SHEET 33A FOR -LCIB2- PROFILE SEE SHEET 51 FOR -YICIB- PROFILE SEE SHEET 51 FOR -YIDET- PROFILE SEE PLAN SHEET 30 FOR -YIDET- SEE SHEET 2-H FOR INTERSECTION DETAILS

-YIDET- PI Sta 12+81.885 Δ = 8° 07' 01.3" (LT) L = 70.834 T = 35.477 R = 500.000 Se = 0.06 Ds = 80 km/h

-YIDET- PI Sta 14+83.729 Δ = 10° 17' 54.6" (RT) L = 89.871 T = 45.057 R = 500.000 Se = 0.04 Ds = 80 km/h

-LCIB- PIs Sta 13+82.731 Δ = 12° 33' 39.6" Ls = 114.000 T = 76.192 R = 260.000 Se = 0.04 Ds = 70 km/h

-LCIB- PIs Sta 14+54.381 Δ = 14° 49' 54.6" (RT) L = 67.305 T = 33.842 R = 260.000 Se = 0.04 Ds = 70 km/h

9-NOV-2004 09:09 R:\U1\11\977\04_09\977_RDY_PSH05_UO_3.dgn