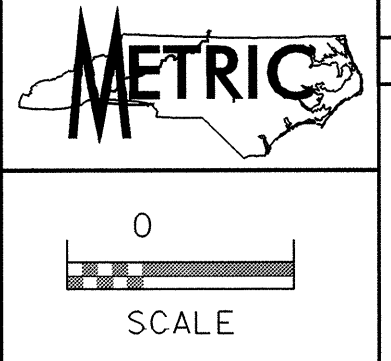
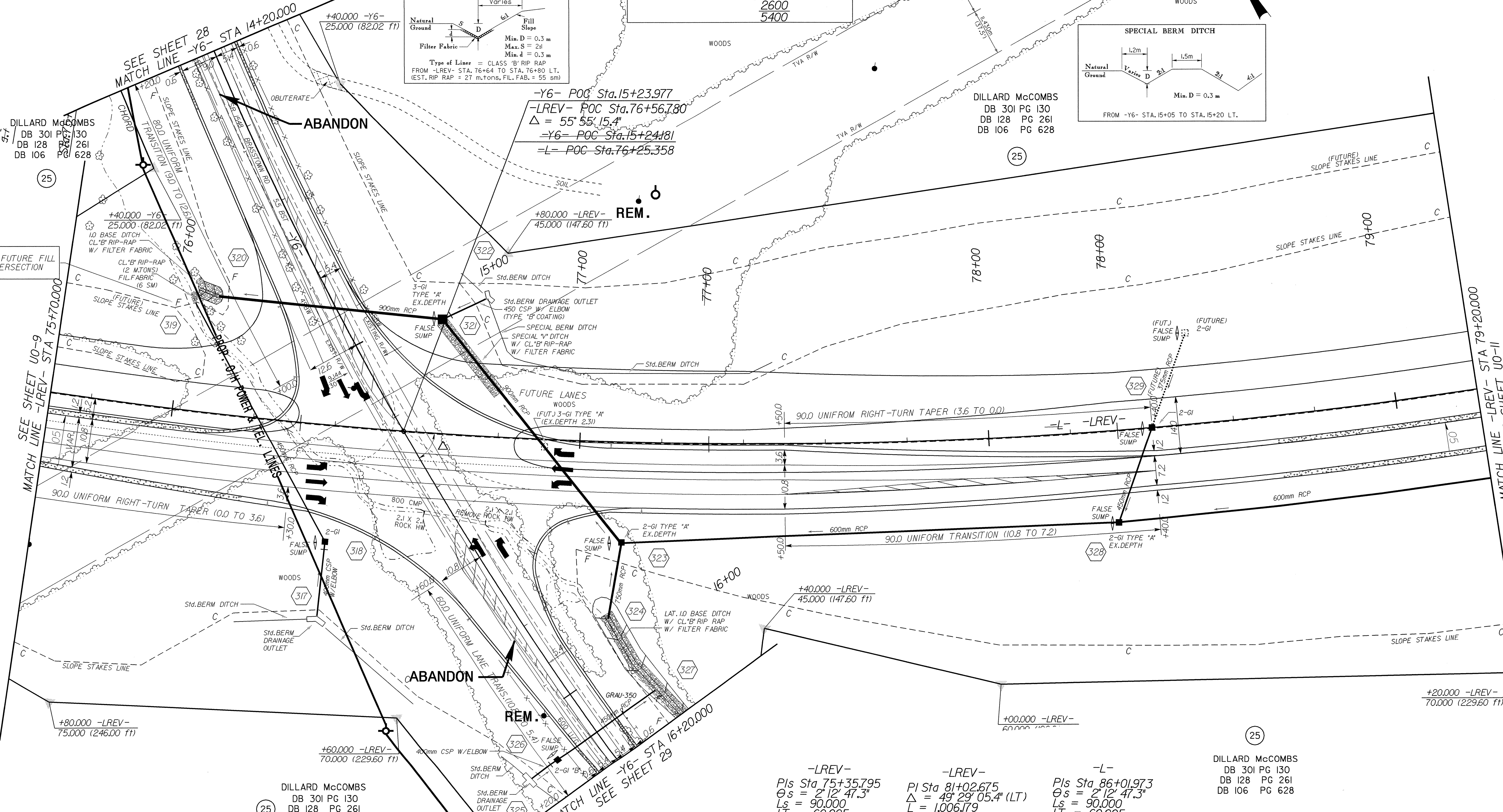
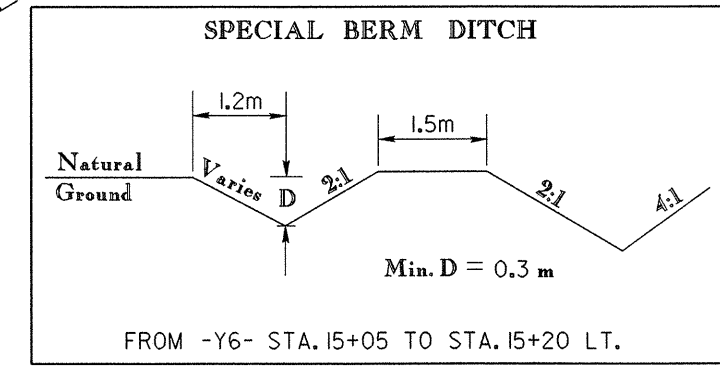
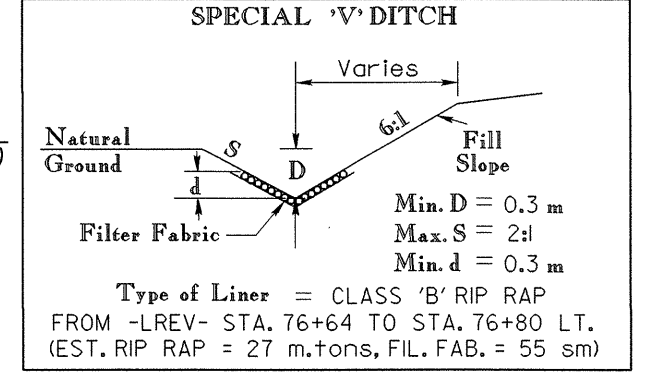
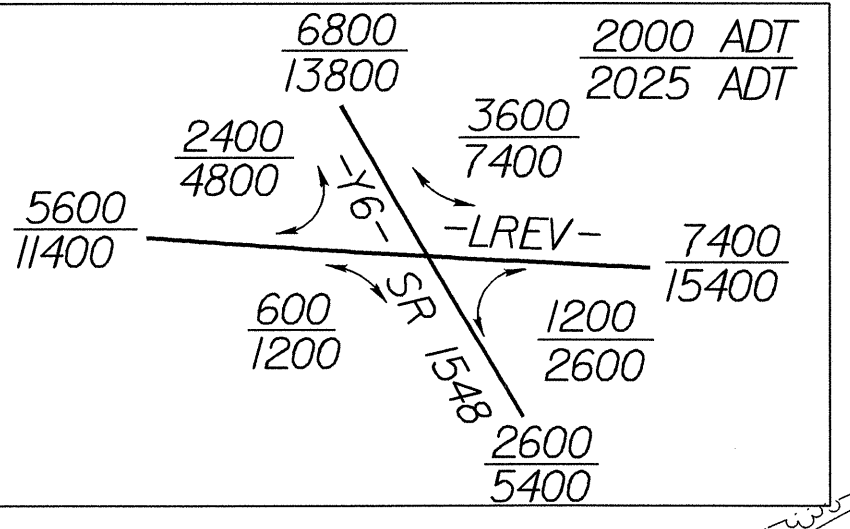


042592

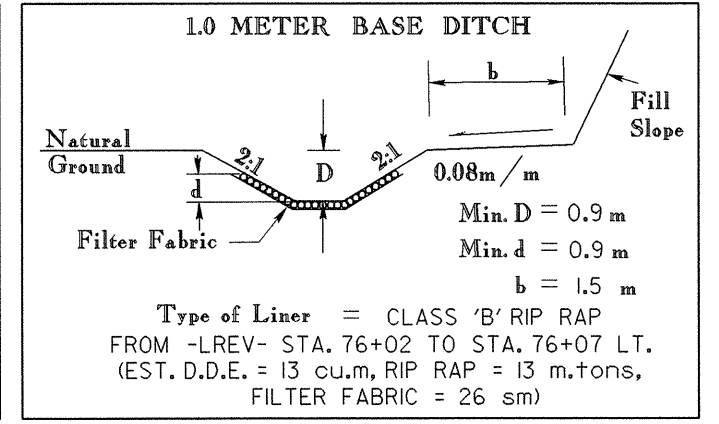
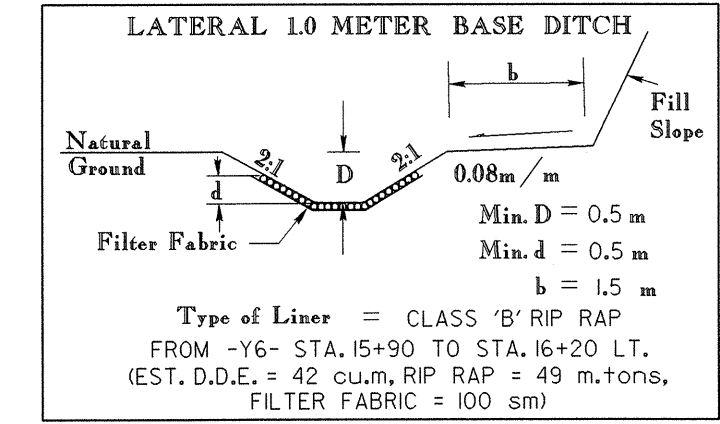


NOTE: ALL PROPOSED UTILITY WORK SHOWN ON THIS SHEET WILL BE DONE BY OTHERS

-Y6REV-/-Y6-  
PI Sta. 15+22.685  
 $\Delta = 31^{\circ}16'34.5"$  (LT)  
L = 474.910  
T = 243.533  
R = 870.000  
Se = 0.05  
Ro = AS SHOWN  
DS = 100 km/h



NOTE: GRADE FUTURE FILL AT INTERSECTION



DILLARD McCOMBS  
DB 301 PG 130  
DB 128 PG 261  
DB 106 PG 628

DILLARD McCOMBS  
DB 301 PG 130  
DB 128 PG 261  
DB 106 PG 628

-LREV-  
PIs Sta. 75+35.795  
 $\theta_s = 2^{\circ}12'47.3"$   
Ls = 90.000  
T = 60.005  
R = 1,165.000  
Se = 0.05  
DS = 105 km/h

-LREV-  
PI Sta. 81+02.675  
 $\Delta = 49^{\circ}29'05.4"$  (LT)  
L = 1,006.179  
T = 536.885  
R = 1,165.000  
Se = 0.05  
DS = 105 km/h

-L-  
PIs Sta. 86+01.973  
 $\theta_s = 2^{\circ}12'47.3"$   
Ls = 90.000  
T = 60.005  
R = 1,165.000  
Se = 0.05  
DS = 105 km/h

-L-  
PIs Sta. 74+99.317  
 $\theta_s = 1^{\circ}28'31.5"$   
Ls = 60.000  
T = 40.001  
R = 1,165.000

-L-  
PI Sta. 80+74.497  
 $\Delta = 50^{\circ}57'36.9"$  (LT)  
L = 1,036.179  
T = 555.181  
R = 1,165.000

-L-  
PIs Sta. 85+75.496  
 $\theta_s = 1^{\circ}28'31.5"$   
Ls = 60.000  
T = 40.001  
R = 1,165.000

SEE SHEET 47 FOR -LREV- PROFILE  
SEE SHEET 57 FOR -Y6- PROFILE  
SEE PROFILES FOR DITCH GRADES  
SEE SHEET 2-H FOR INTERSECTION DETAILS

R:\11\1\_08-NOV-2004\1124\_89977\_F01\_P5122\_U0\_10.dgn