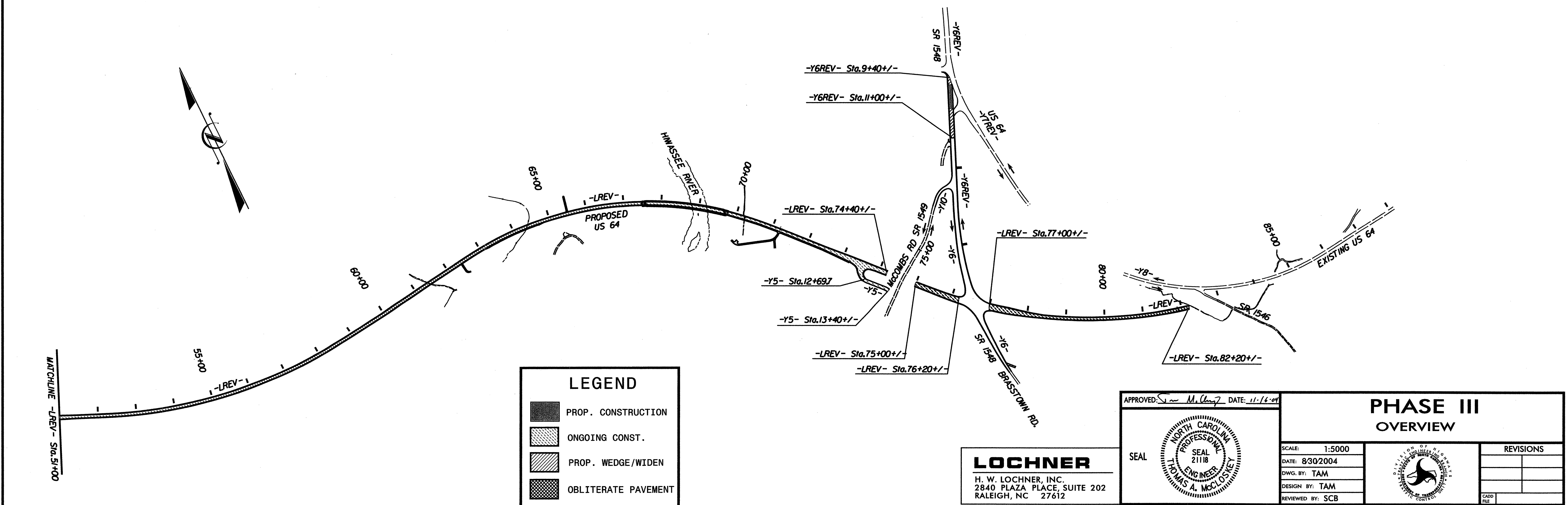
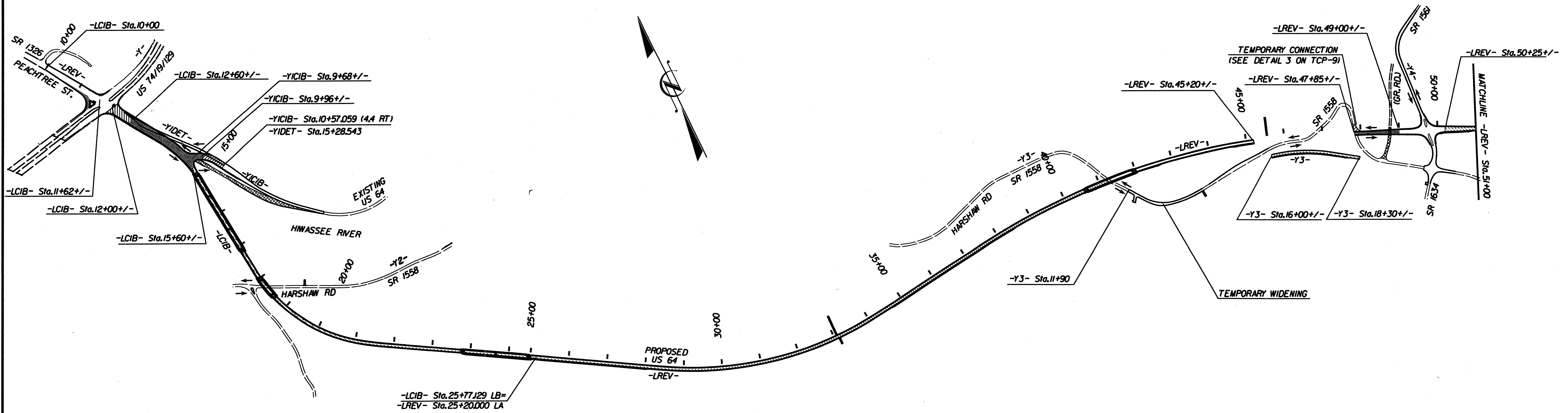




PROJ. REFERENCE NO. R-977A	SHEET NO. TCP-8
-------------------------------	--------------------

PHASE III



LEGEND	
	PROP. CONSTRUCTION
	ONGOING CONST.
	PROP. WEDGE/WIDEN
	OBLITERATE PAVEMENT

LOCHNER
 H. W. LOCHNER, INC.
 2840 PLAZA PLACE, SUITE 202
 RALEIGH, NC 27612

APPROVED: *[Signature]* DATE: 11-16-04
 SEAL
 NORTH CAROLINA
 PROFESSIONAL
 ENGINEER
 THOMAS A. McCLURE

PHASE III OVERVIEW	
SCALE: 1:5000	REVISIONS
DATE: 8/30/2004	
DWG. BY: TAM	
DESIGN BY: TAM	
REVIEWED BY: SCB	