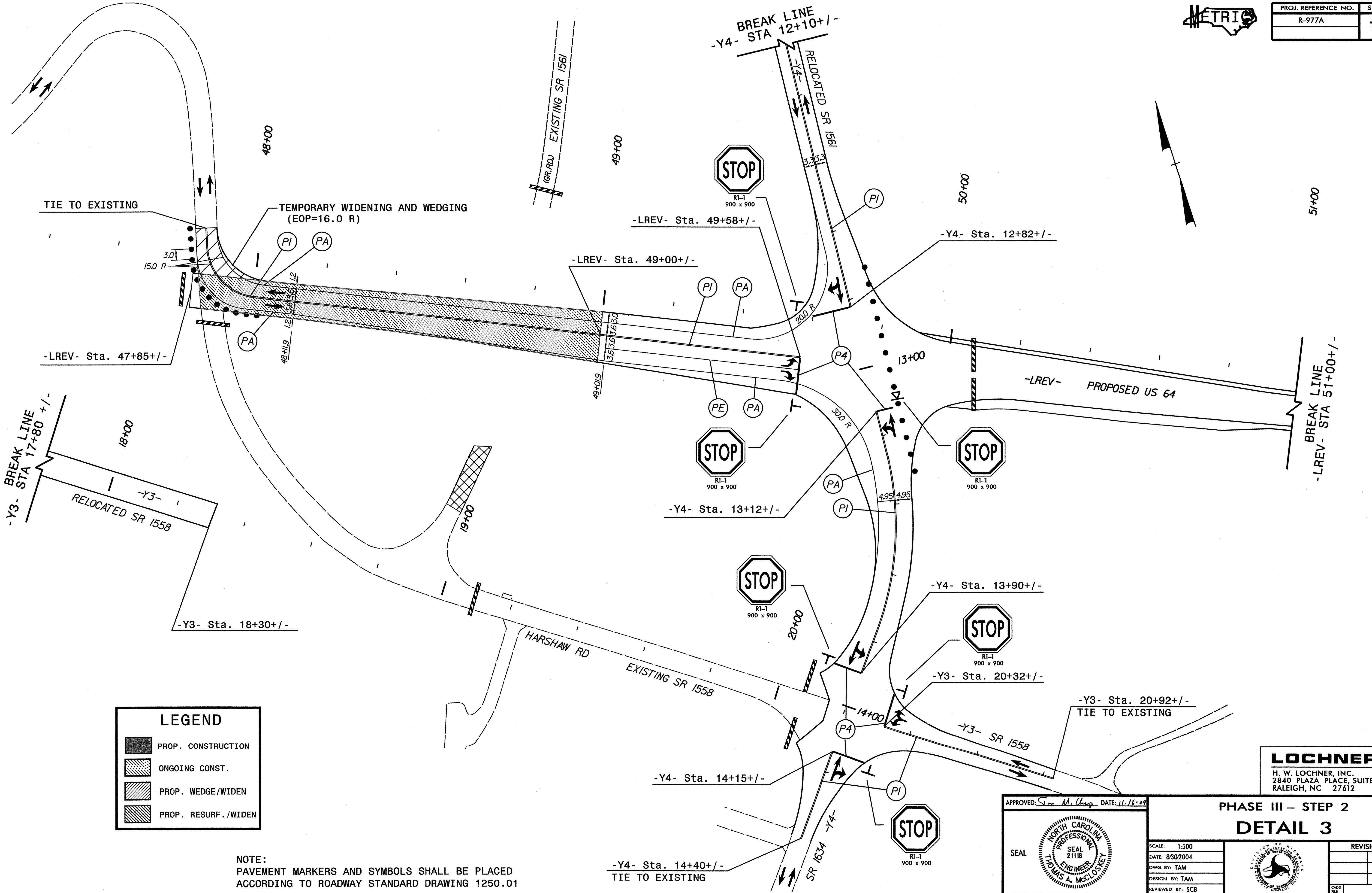




PROJ. REFERENCE NO. R-977A	SHEET NO. TCP-9
-------------------------------	--------------------



LEGEND	
	PROP. CONSTRUCTION
	ONGOING CONST.
	PROP. WEDGE/WIDEN
	PROP. RESURF./WIDEN

NOTE:
PAVEMENT MARKERS AND SYMBOLS SHALL BE PLACED
ACCORDING TO ROADWAY STANDARD DRAWING 1250.01

LOCHNER
H. W. LOCHNER, INC.
2840 PLAZA PLACE, SUITE 202
RALEIGH, NC 27612

APPROVED: *Se-McClary* DATE: 11-16-04
SEAL
NORTH CAROLINA
PROFESSIONAL
ENGINEER
T. J. MAS A. McCLOSKEY

PHASE III - STEP 2 DETAIL 3	
SCALE: 1:500	REVISIONS
DATE: 8/30/2004	
DESIGN BY: TAM	
REVIEWED BY: SCB	