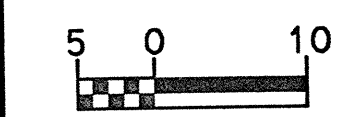




PROJECT REFERENCE NO.	SHEET NO.
R-977A	6
HIGHWAY DESIGN ENGINEER	HYDRAULICS ENGINEER
CONST. REV.	
R/W REV.	



REVISIONS

LAWRENCE E. & LINDA E. POSEY
DB 342 PG 241
END CONSTRUCTION
-Y1 REV- Sta.13+20.000

-L1- (MEOP LTJ)
PIs Sta 20+53.919
θs = 7° 15' 09.5"
Ls = 100.000
LT = 66.723
ST = 33.384

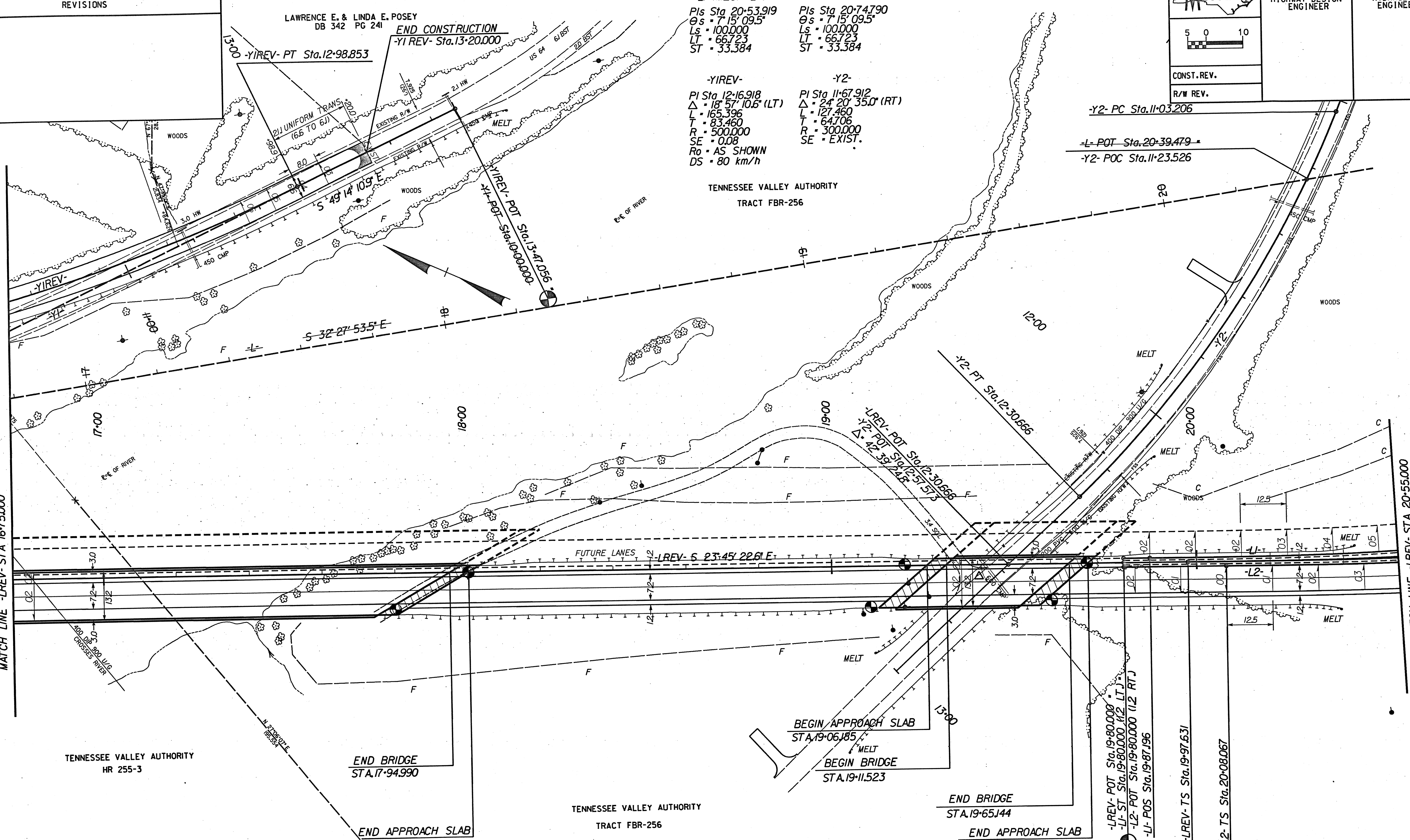
-L2- (MEOP RTJ)
PIs Sta 20+74.790
θs = 7° 15' 09.5"
Ls = 100.000
LT = 66.723
ST = 33.384

-YIREV-
PI Sta 12+16.918
Δ = 18° 57' 10.6" (LT)
L = 165.396
T = 83.460
R = 500.000
SE = 0.08
Ro = AS SHOWN
DS = 80 km/h

-Y2-
PI Sta 11+67.912
Δ = 24° 20' 35.0" (RT)
L = 127.460
T = 64.706
R = 300.000
SE = EXIST.

-Y2- PC Sta.11+03.206
-L- POT Sta.20+39.479
-Y2- POC Sta.11+23.526

TENNESSEE VALLEY AUTHORITY
TRACT FBR-256



SEE SHEET 5
MATCH LINE -LREV- STA 16+75.000

MATCH LINE -LREV- STA 20+55.000
SEE SHEET 7

-LREV-
PIs Sta 20+64.354
θs = 7° 15' 09.5"
Ls = 100.000
LT = 66.723
ST = 33.384

-LREV-
PI Sta 21+69.856
Δ = 20° 43' 25.6" (LT)
L = 142.871
T = 72.225
R = 395.000
DS = 100 km/h

-LREV-
PIs Sta 22+73.886
θs = 7° 15' 09.5"
Ls = 100.000
LT = 66.723
ST = 33.384

PRELIMINARY PLANS
DO NOT USE FOR CONSTRUCTION

INCOMPLETE PLANS
DO NOT USE FOR R/W ACQUISITION

SEE SHEET 32 FOR -LREV- PROFILE
SEE SHEET 50 FOR -YIREV- PROFILE
SEE SHEET 51 FOR -Y2- PROFILE

LOCHNER
H.W. LOCHNER, INC.
3725 NATIONAL DRIVE, SUITE 123
RALEIGH, NC 27612