

PROJECT REFERENCE NO.	SHEET NO.
R-977A	12
HIGHWAY DESIGN ENGINEER	HYDRAULICS ENGINEER
	JOHN DICKEY DB 191 PG 165

METRIC

CONST. REV.

R/W REV.

REVISIONS

SEE SHEET 38 FOR -LREV- PROFILE
SEE SHEET 51 FOR -Y3- PROFILE

-Y3-
 PI Sta 10+30.064
 $\Delta = 22' 40'' 00.0''$ (RT)
 L = 59.341
 T = 30.064
 R = 150.000
 SE = EXIST.

-Y3-
 PI Sta 11+25.152
 $\Delta = 11' 39'' 00.0''$ (LT)
 L = 43.716
 T = 21.934
 R = 215.000
 SE = EXIST.

-Y3-
 PI Sta 12+77.398
 $\Delta = 39' 55'' 53.3''$ (LT)
 L = 55.755
 T = 29.064
 R = 80.001
 SE = EXIST.

-Y3-
 PI Sta 13+47.925
 $\Delta = 18' 47'' 06.6''$ (LT)
 L = 86.884
 T = 43.835
 R = 265.000
 SE = EXIST.

-LREV-
 PIs Sta 37+70.910
 $\Theta s = 1' 28'' 24.0''$
 Ls = 90.000
 LT = 60.002
 ST = 30.002

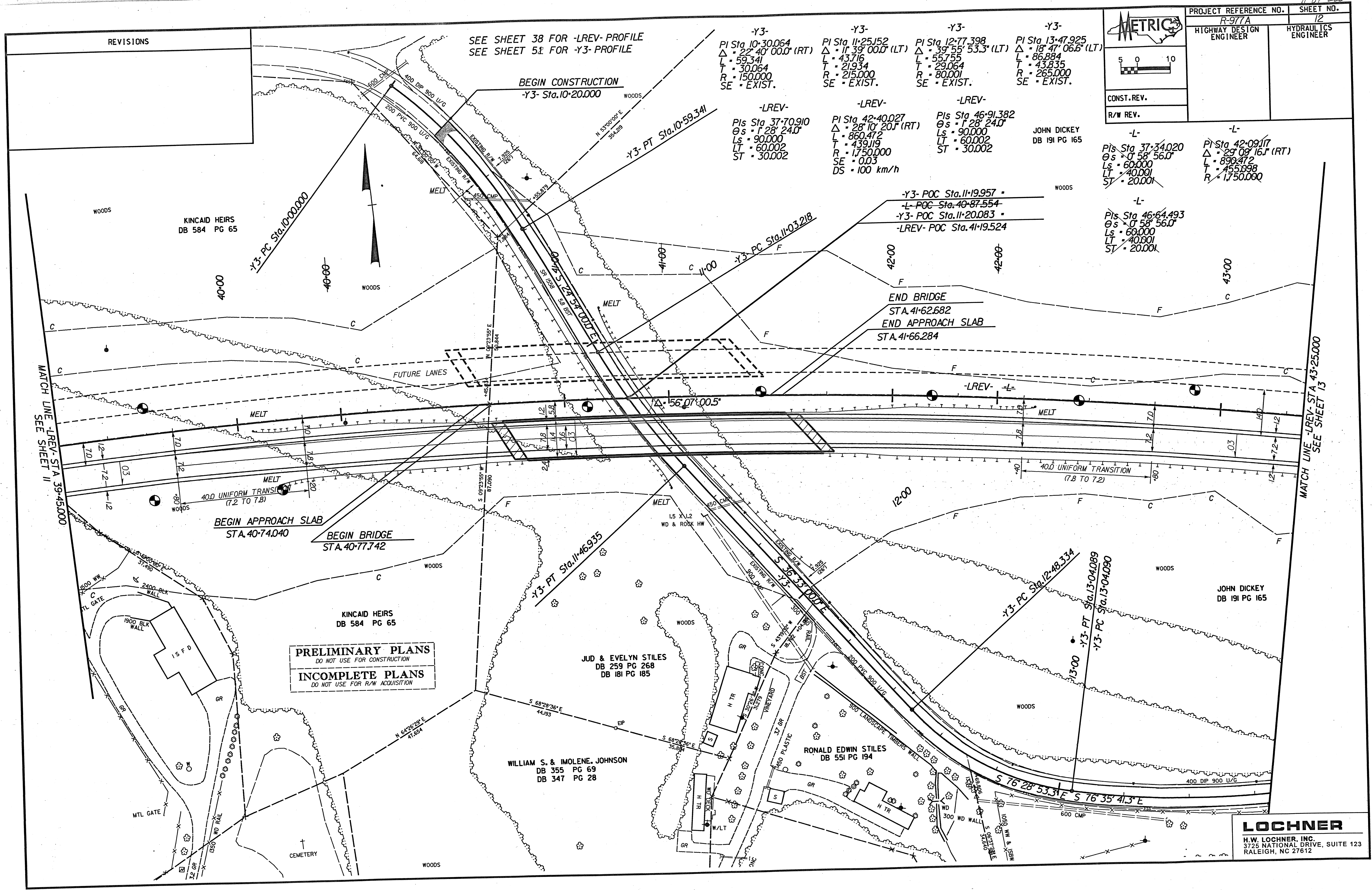
-LREV-
 PI Sta 42+40.027
 $\Delta = 28' 10'' 20.1''$ (RT)
 L = 860.472
 T = 439.119
 R = 1,750.000
 SE = 0.03
 DS = 100 km/h

-LREV-
 PIs Sta 46+91.382
 $\Theta s = 1' 28'' 24.0''$
 Ls = 90.000
 LT = 60.002
 ST = 30.002

-L-
 PIs Sta 37+34.020
 $\Theta s = 0' 58'' 56.0''$
 Ls = 60.000
 LT = 40.001
 ST = 20.001

-L-
 PIs Sta 42+09.117
 $\Delta = 29' 09'' 16.1''$ (RT)
 L = 890.472
 T = 455.098
 R = 1,750.000

-L-
 PIs Sta 46+64.493
 $\Theta s = 0' 58'' 56.0''$
 Ls = 60.000
 LT = 40.001
 ST = 20.001



PRELIMINARY PLANS
DO NOT USE FOR CONSTRUCTION

INCOMPLETE PLANS
DO NOT USE FOR R/W ACQUISITION