	PROJECT REFERENCE NO.	SHEET NO.
	R-977A	13
CONST. REV.	HIGHWAY DESIGN ENGINEER	HYDRAULICS ENGINEER
R/W REV.		

-L-
 PIs Sta 37+34.020
 Δ = 0° 58' 56.0"
 Ls = 60.000
 LT = 40.001
 ST = 20.001

-L-
 PIs Sta 42+09.117
 Δ = 29° 09' 16.1" (RT)
 L = 890.472
 T = 455.098
 R = 1750.000

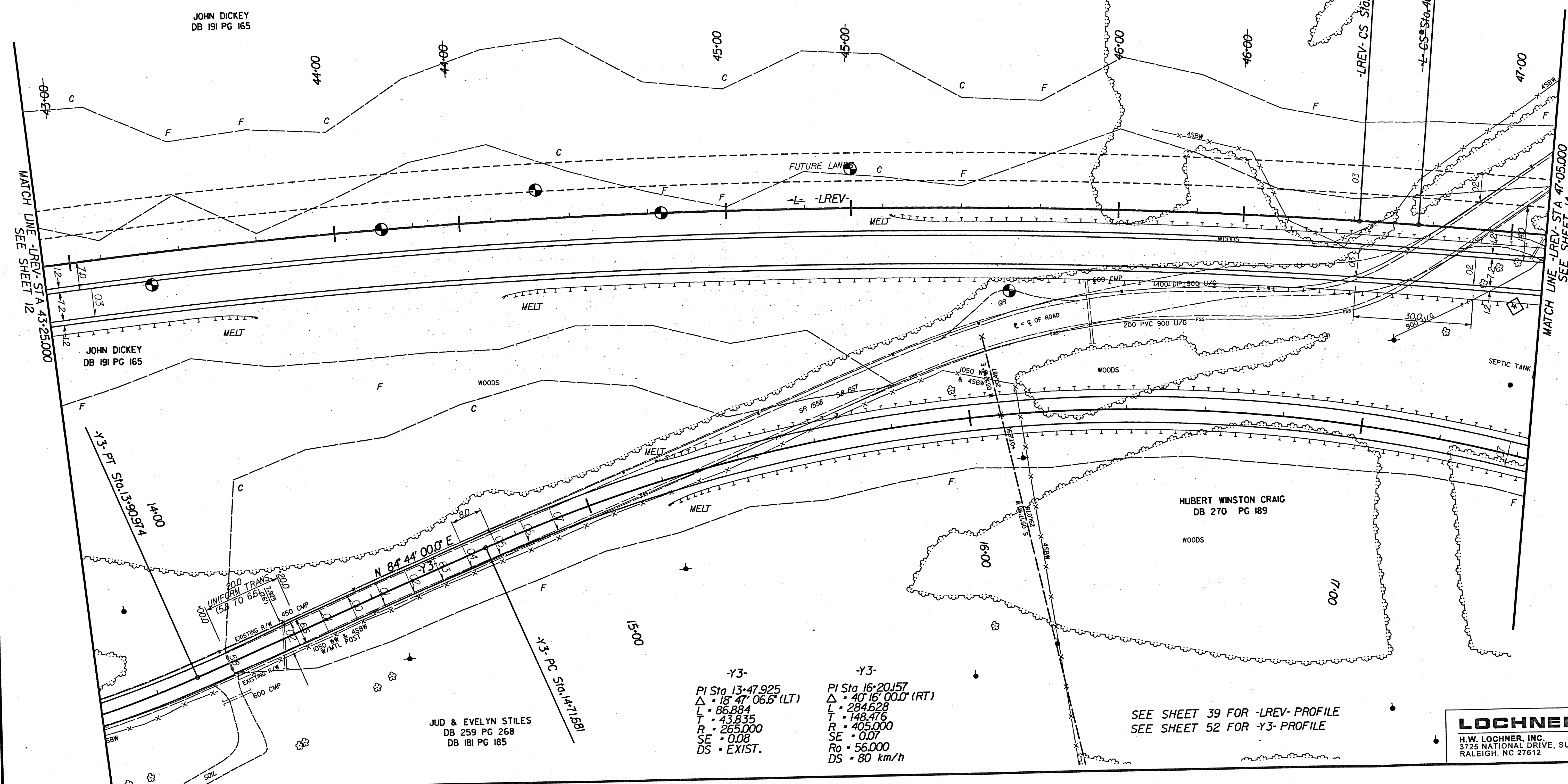
-L-
 PIs Sta 46+64.493
 Δ = 0° 58' 56.0"
 Ls = 60.000
 LT = 40.001
 ST = 20.001

-LREV-
 PIs Sta 37+70.910
 Δ = 1° 28' 24.0"
 Ls = 90.000
 LT = 60.002
 ST = 30.002

-LREV-
 PIs Sta 42+40.027
 Δ = 28° 10' 20.1" (RT)
 L = 860.472
 T = 439.119
 R = 1750.000
 SE = 0.03
 DS = 100 km/h

-LREV-
 PIs Sta 46+91.382
 Δ = 1° 28' 24.0"
 Ls = 90.000
 LT = 60.002
 ST = 30.002

PRELIMINARY PLANS
 DO NOT USE FOR CONSTRUCTION
INCOMPLETE PLANS
 DO NOT USE FOR R/W ACQUISITION



-Y3-
 PIs Sta 13+47.925
 Δ = 18° 47' 06.6" (LT)
 L = 86.884
 T = 43.835
 R = 265.000
 SE = 0.08
 DS = EXIST.

-Y3-
 PIs Sta 16+20.157
 Δ = 40° 16' 00.0" (RT)
 L = 284.628
 T = 148.476
 R = 405.000
 SE = 0.07
 Ro = 56.000
 DS = 80 km/h

SEE SHEET 39 FOR -LREV- PROFILE
 SEE SHEET 52 FOR -Y3- PROFILE

LOCHNER
 H.W. LOCHNER, INC.
 3725 NATIONAL DRIVE, SUITE 123
 RALEIGH, NC 27612