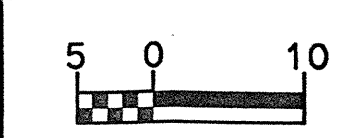


REVISIONS



| | |
|---------------------------------|---------------------|
| PROJECT REFERENCE NO. R-977A | SHEET NO. 14 |
| HIGHWAY DESIGN ENGINEER | HYDRAULICS ENGINEER |
| CONST. REV. | |
| R/W REV. | |



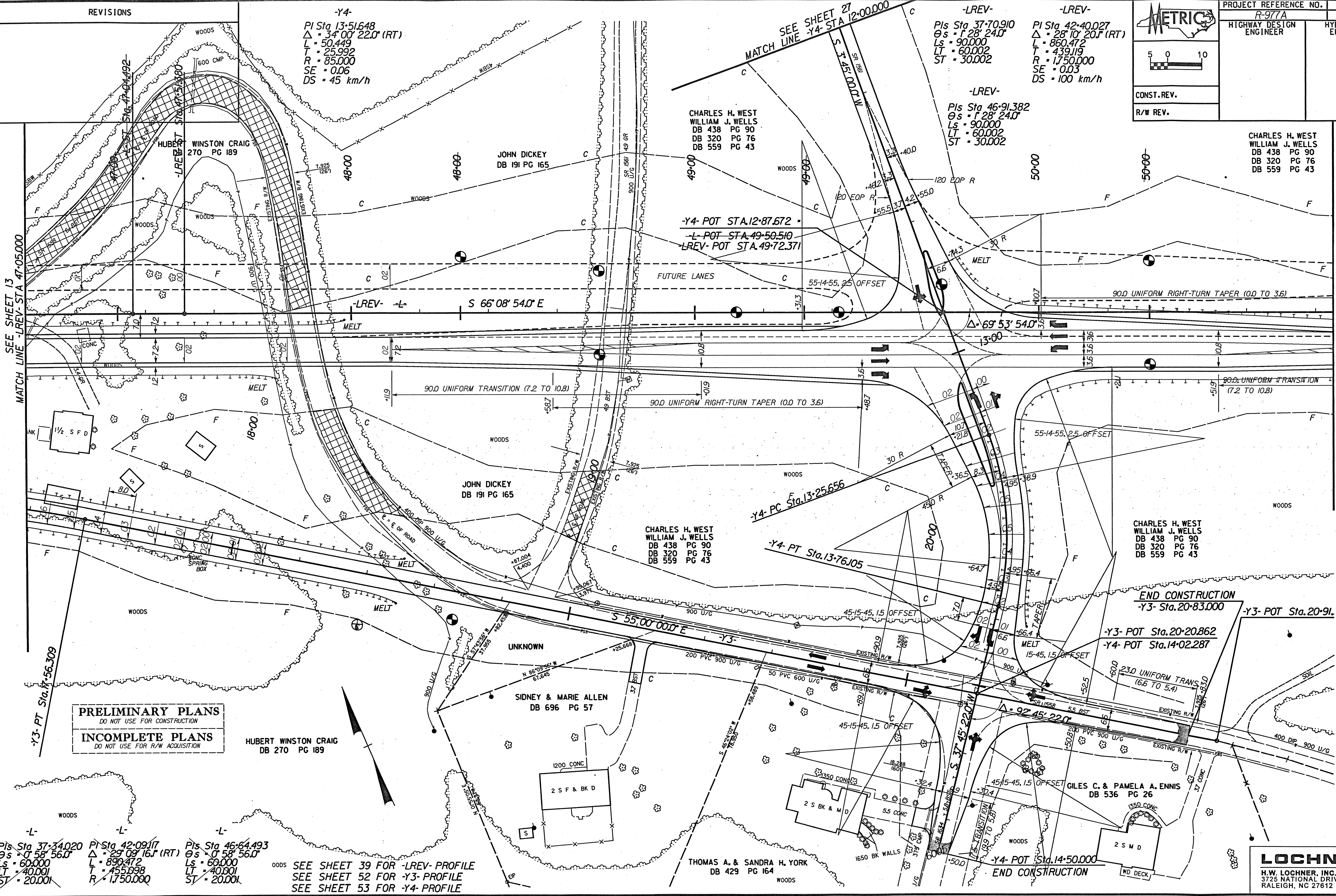
-Y4-
PI Sta 13+51.648
Δ = 34° 00' 22.0" (RT)
L = 50.449
T = 25.992
R = 85.000
SE = 0.06
DS = 45 km/h

-LREV-
PIs Sta 37+70.910
Θs = 1° 28' 24.0"
Ls = 90.000
LT = 60.002
ST = 30.002

-LREV-
PI Sta 42+40.027
Δ = 28° 10' 20.0" (RT)
L = 860.472
T = 439.119
R = 1,750.000
SE = 0.03
DS = 100 km/h

-LREV-
PIs Sta 46+91.382
Θs = 1° 28' 24.0"
Ls = 90.000
LT = 60.002
ST = 30.002

CHARLES H. WEST
WILLIAM J. WELLS
DB 438 PG 90
DB 320 PG 76
DB 559 PG 43



PRELIMINARY PLANS
DO NOT USE FOR CONSTRUCTION
INCOMPLETE PLANS
DO NOT USE FOR R/W ACQUISITION

PIs Sta 37+34.020
Θs = 0° 58' 56.0"
Ls = 60.000
LT = 40.001
ST = 20.001

PI Sta 42+09.117
Δ = 29° 09' 16.0" (RT)
L = 890.472
T = 455.998
R = 1,750.000

PIs Sta 46+64.493
Θs = 0° 58' 56.0"
Ls = 60.000
LT = 40.001
ST = 20.001

SEE SHEET 39 FOR -LREV- PROFILE
SEE SHEET 52 FOR -Y3- PROFILE
SEE SHEET 53 FOR -Y4- PROFILE

LOCHNER
H.W. LOCHNER, INC.
3725 NATIONAL DRIVE, SUITE 123
RALEIGH, NC 27612