

REVISIONS



-LREV-
Pis Sta 52+50.53
θs = 2° 12' 47.3"
Ls = 90.000
LT = 60.005
ST = 30.004

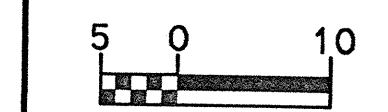
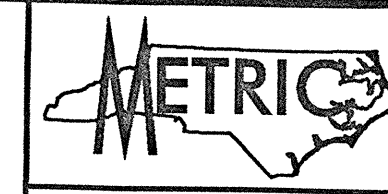
-LREV-
PI Sta 55+58.285
Δ = 26° 51' 19.4" (LT)
L = 546.053
T = 278.137
R = 1,165.000
SE = 0.05
DS = 105 km/h

-LREV-
Pis Sta 58+56.205
θs = 2° 12' 47.3"
Ls = 90.000
LT = 60.005
ST = 30.004

-L-
Pis Sta 52+33.333
θs = 1° 28' 31.5"
Ls = 60.000
LT = 40.001
ST = 20.001

-L-
PI Sta 55+27.374
Δ = 28° 19' 50.9" (LT)
L = 576.053
T = 294.042
R = 1,165.000

-L-
Pis Sta 58+29.386
θs = 1° 28' 31.5"
Ls = 60.000
LT = 40.001
ST = 20.001



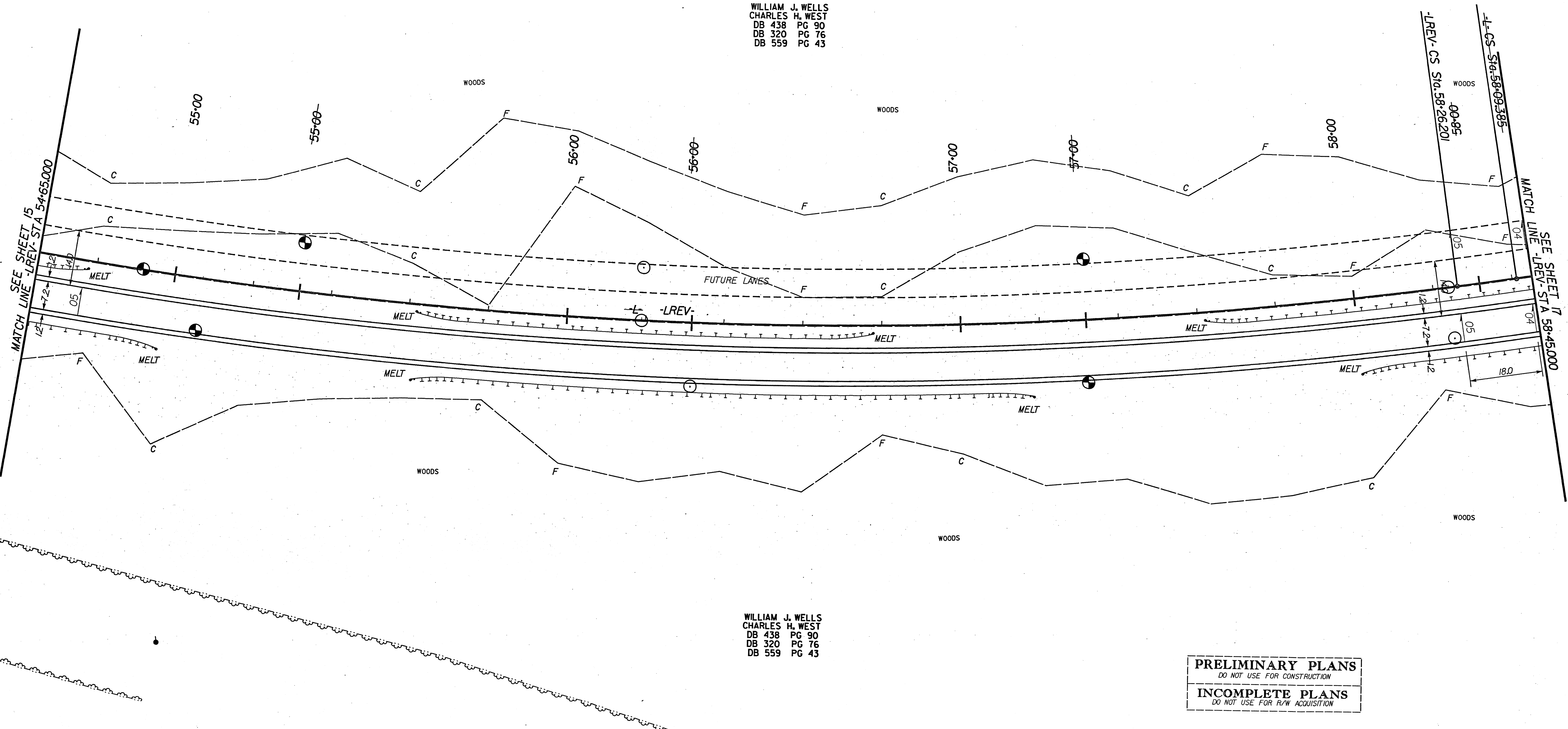
CONST. REV.
R/W REV.

PROJECT REFERENCE NO. R-977A
SHEET NO. 16

HIGHWAY DESIGN ENGINEER
HYDRAULICS ENGINEER

150F220

WILLIAM J. WELLS
CHARLES H. WEST
DB 438 PG 90
DB 320 PG 76
DB 559 PG 43



WILLIAM J. WELLS
CHARLES H. WEST
DB 438 PG 90
DB 320 PG 76
DB 559 PG 43

PRELIMINARY PLANS
DO NOT USE FOR CONSTRUCTION
INCOMPLETE PLANS
DO NOT USE FOR R/W ACQUISITION

SEE SHEET 41 FOR -LREV- PROFILE

LOCHNER
H.W. LOCHNER, INC.
3725 NATIONAL DRIVE, SUITE 123
RALEIGH, NC 27612