

METRICS

CONST. REV.
R/W REV.

PROJECT REFERENCE NO. R-977A	SHEET NO. 20
HIGHWAY DESIGN ENGINEER	HYDRAULICS ENGINEER

REVISIONS

-L-
PI Sta 66+70.867
Δ = 51°11'43" (RT)
L = 781.836
T = 419.186
R = 875.000

-L-
PI Sta 66+70.867
Δ = 51°11'43" (RT)
L = 781.836
T = 419.186
R = 875.000

-L-
PI Sta 70+83.519
θs = 157°52.0"
Ls = 60.000
LT = 40.002
ST = 20.002

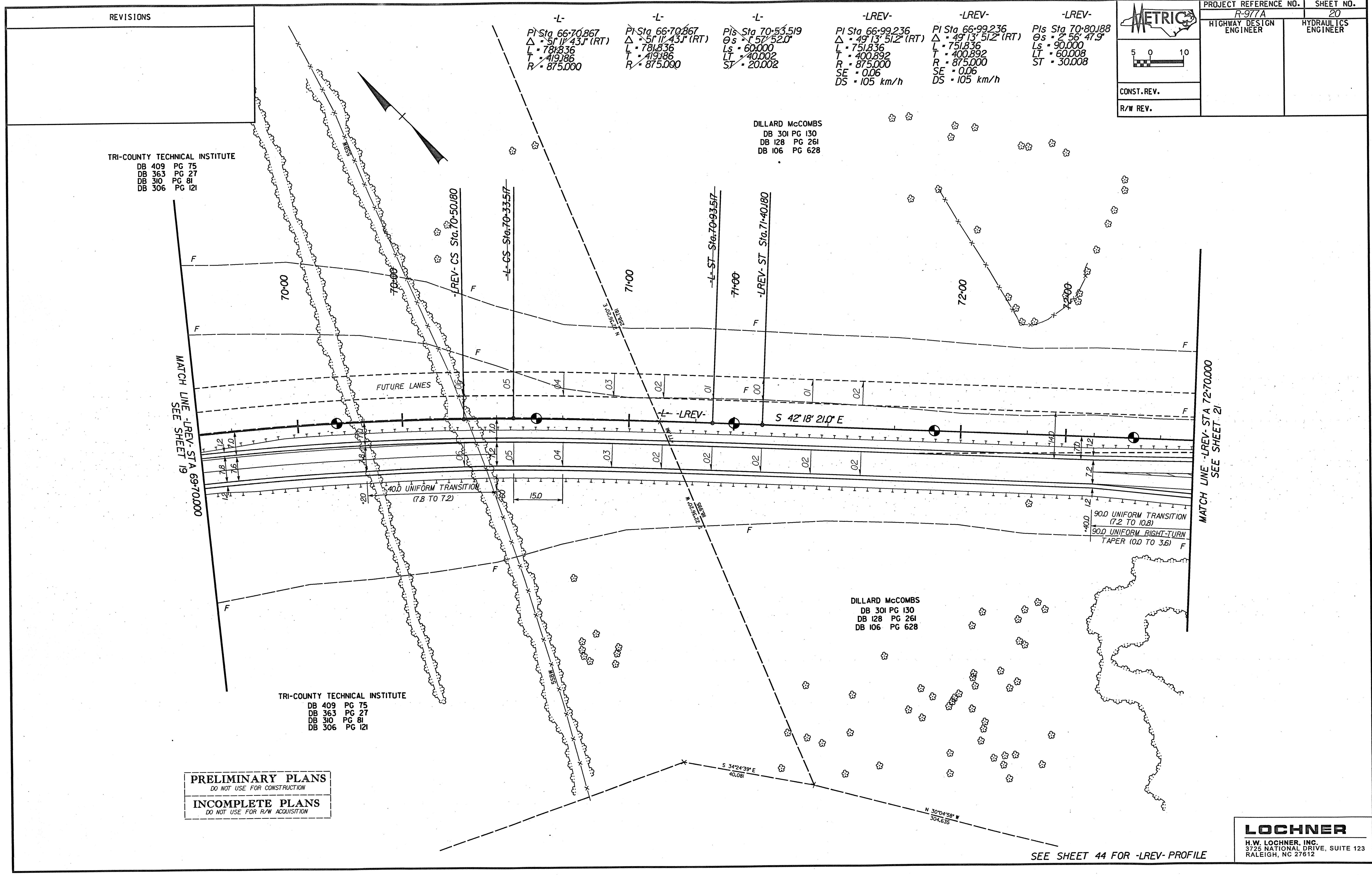
-LREV-
PI Sta 66+99.236
Δ = 49°13'51.2" (RT)
L = 751.836
T = 400.892
R = 875.000
SE = 0.06
DS = 105 km/h

-LREV-
PI Sta 66+99.236
Δ = 49°13'51.2" (RT)
L = 751.836
T = 400.892
R = 875.000
SE = 0.06
DS = 105 km/h

-LREV-
PI Sta 70+80.188
θs = 256°47.9"
Ls = 90.000
LT = 60.008
ST = 30.008

TRI-COUNTY TECHNICAL INSTITUTE
DB 409 PG 75
DB 363 PG 27
DB 310 PG 81
DB 306 PG 121

DILLARD McCOMBS
DB 301 PG 130
DB 128 PG 261
DB 106 PG 628



PRELIMINARY PLANS
DO NOT USE FOR CONSTRUCTION

INCOMPLETE PLANS
DO NOT USE FOR R/W ACQUISITION

TRI-COUNTY TECHNICAL INSTITUTE
DB 409 PG 75
DB 363 PG 27
DB 310 PG 81
DB 306 PG 121

DILLARD McCOMBS
DB 301 PG 130
DB 128 PG 261
DB 106 PG 628

LOCHNER
H.W. LOCHNER, INC.
3725 NATIONAL DRIVE, SUITE 123
RALEIGH, NC 27612

SEE SHEET 44 FOR -LREV- PROFILE