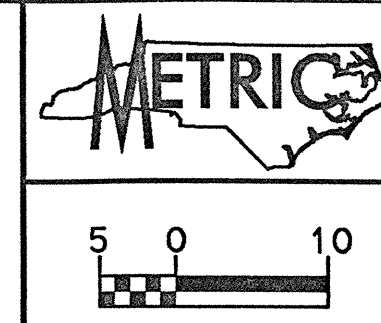


REVISIONS

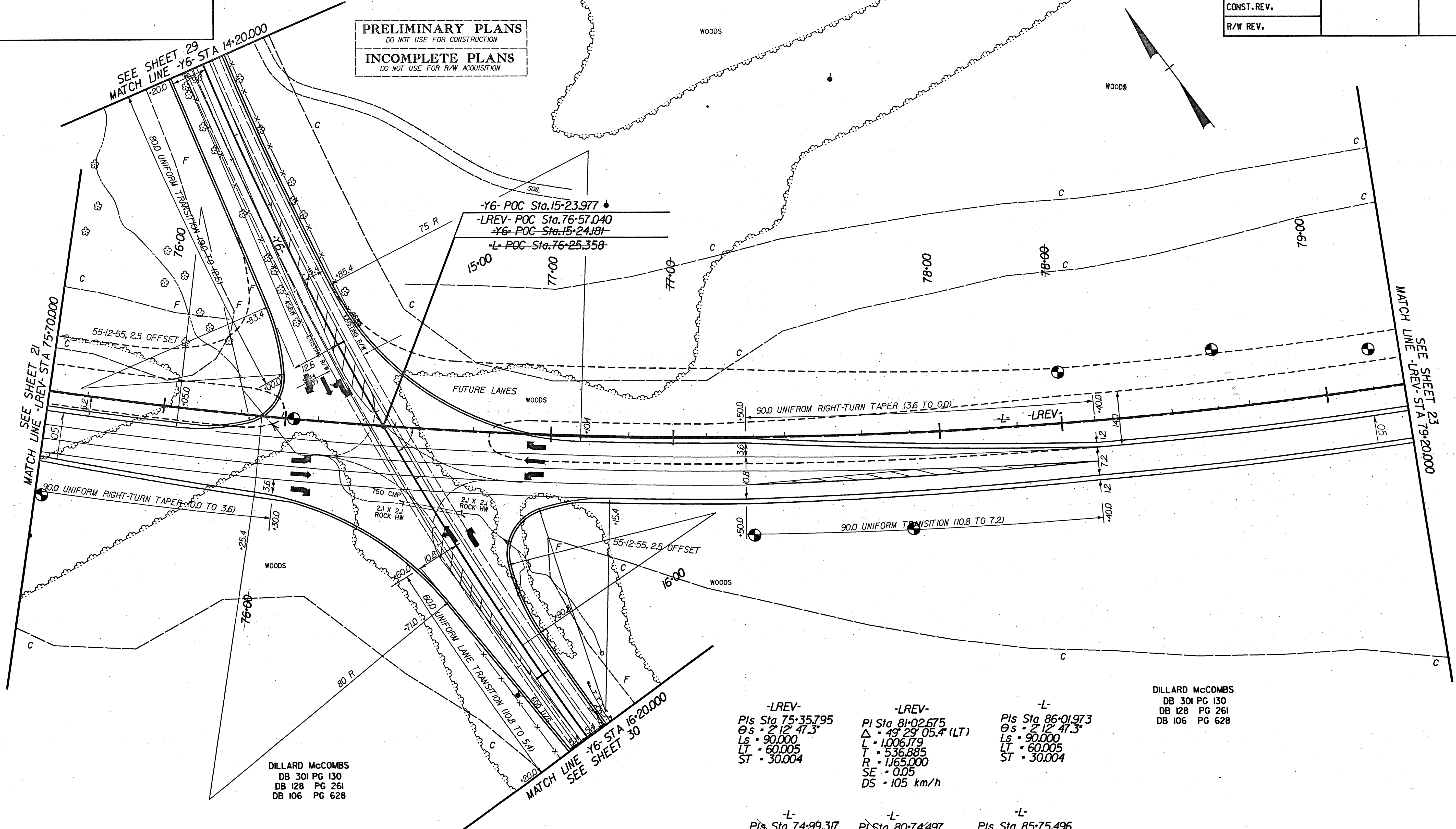
-Y6-
PI Sta 15+22.685
Δ = 31° 16' 34.5" (LT)
L = 474.910
T = 243.533
R = 870.000
SE = 0.05
DS = 100 km/h



PROJECT REFERENCE NO.	SHEET NO.
R-977A	22
HIGHWAY DESIGN ENGINEER	HYDRAULICS ENGINEER
CONST. REV.	
R/W REV.	

PRELIMINARY PLANS
DO NOT USE FOR CONSTRUCTION
INCOMPLETE PLANS
DO NOT USE FOR R/W ACQUISITION

DILLARD McCOMBS
DB 301 PG 130
DB 128 PG 261
DB 106 PG 628



-Y6- POC Sta. 15+23.977
-LREV- POC Sta. 76+57.040
-Y6- POC Sta. 15+24.181
-L- POC Sta. 76+25.358

SEE SHEET 21
MATCH LINE -LREV- STA 75+70.000

SEE SHEET 29
MATCH LINE -Y6- STA 14+20.000

SEE SHEET 23
MATCH LINE -LREV- STA 79+20.000

MATCH LINE -Y6- STA 16+20.000
SEE SHEET 30

DILLARD McCOMBS
DB 301 PG 130
DB 128 PG 261
DB 106 PG 628

DILLARD McCOMBS
DB 301 PG 130
DB 128 PG 261
DB 106 PG 628

-LREV-
PIs Sta 75+35.795
Θs = 2° 12' 47.3"
Ls = 90.000
LT = 60.005
ST = 30.004

-LREV-
PI Sta 81+02.675
Δ = 49° 29' 05.4" (LT)
L = 1,006.179
T = 536.885
R = 1,165.000
SE = 0.05
DS = 105 km/h

-L-
PIs Sta 86+01.973
Θs = 2° 12' 47.3"
Ls = 90.000
LT = 60.005
ST = 30.004

-L-
PIs Sta 74+99.317
Θs = 1° 28' 31.5"
Ls = 60.000
LT = 40.001
ST = 20.001

-L-
PI Sta 80+74.497
Δ = 50° 57' 36.9" (LT)
L = 1,036.179
T = 555.181
R = 1,165.000

-L-
PIs Sta 85+75.496
Θs = 1° 28' 31.5"
Ls = 60.000
LT = 40.001
ST = 20.001

SEE SHEET 46 FOR -LREV- PROFILE
SEE SHEET 56 FOR -Y6- PROFILE

LOCHNER
H.W. LOCHNER, INC.
3725 NATIONAL DRIVE, SUITE 123
RALEIGH, NC 27612