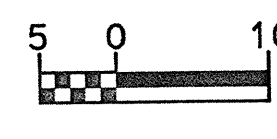
	PROJECT REFERENCE NO.	SHEET NO.
	R-977A	24
	HIGHWAY DESIGN ENGINEER	HYDRAULICS ENGINEER
CONST. REV.		
R/W REV.		

REVISIONS	

-Y8-
 PI Sta 11+36.858
 $\Delta = 26' 33" 12.6'$ (LT)
 L = 268.799
 T = 136.858
 R = 580.000
 SE = EXIST.

-Y9-
 PI Sta 10+18.178
 $\Delta = 22' 36" 31.8'$ (LT)
 L = 197.30
 T = 9.995
 R = 50.000
 SE = EXIST.

-LREV-
 PIs Sta 75+35.795
 $\theta s = 2' 12" 47.3'$
 L = 90.000
 LT = 60.005
 ST = 30.004

-LREV-
 PI Sta 81+02.675
 $\Delta = 49' 29" 05.4'$ (LT)
 L = 1006.179
 T = 536.885
 R = 1,165.000
 SE = 0.05
 DS = 105 km/h

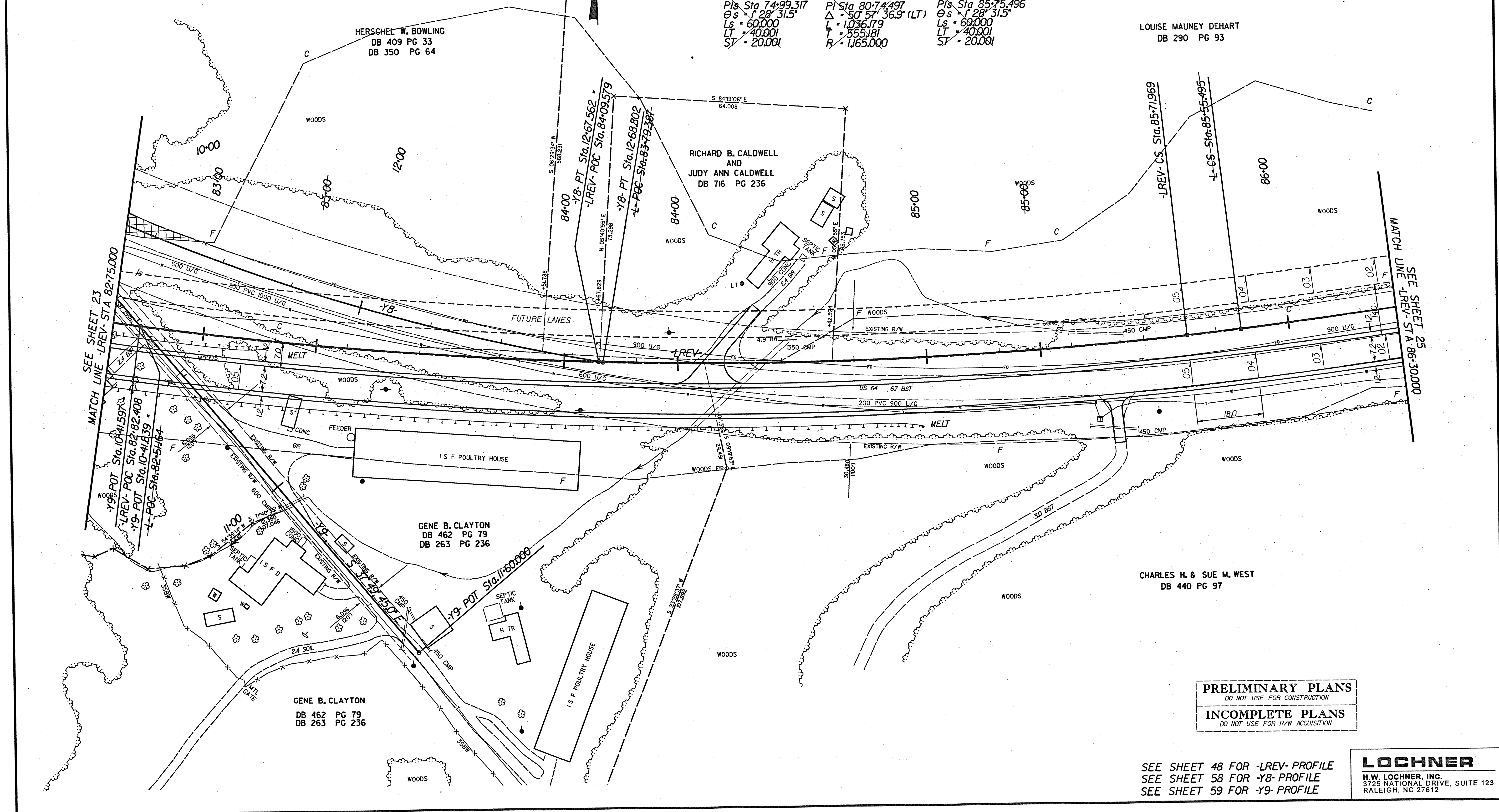
-LREV-
 PIs Sta 86+01.973
 $\theta s = 2' 12" 47.3'$
 L = 90.000
 LT = 60.005
 ST = 30.004

-L-
 PIs Sta 74+99.317
 $\theta s = 1' 28" 31.5'$
 L = 60.000
 LT = 40.001
 ST = 20.001

-L-
 PI Sta 80+74.497
 $\Delta = 50' 57" 36.9'$ (LT)
 L = 1036.179
 T = 555.181
 R = 1,165.000

-L-
 PIs Sta 85+75.496
 $\theta s = 1' 28" 31.5'$
 L = 60.000
 LT = 40.001
 ST = 20.001

LOUISE MAUNEY DEHART
 DB 290 PG 93



SEE SHEET 23
 MATCH LINE -LREV- STA 82+75.000

SEE SHEET 25
 MATCH LINE -LREV- STA 86+30.000

PRELIMINARY PLANS
 DO NOT USE FOR CONSTRUCTION

INCOMPLETE PLANS
 DO NOT USE FOR R/W ACQUISITION

SEE SHEET 48 FOR -LREV- PROFILE
 SEE SHEET 58 FOR -Y8- PROFILE
 SEE SHEET 59 FOR -Y9- PROFILE

LOCHNER
 H.W. LOCHNER, INC.
 3725 NATIONAL DRIVE, SUITE 123
 RALEIGH, NC 27612