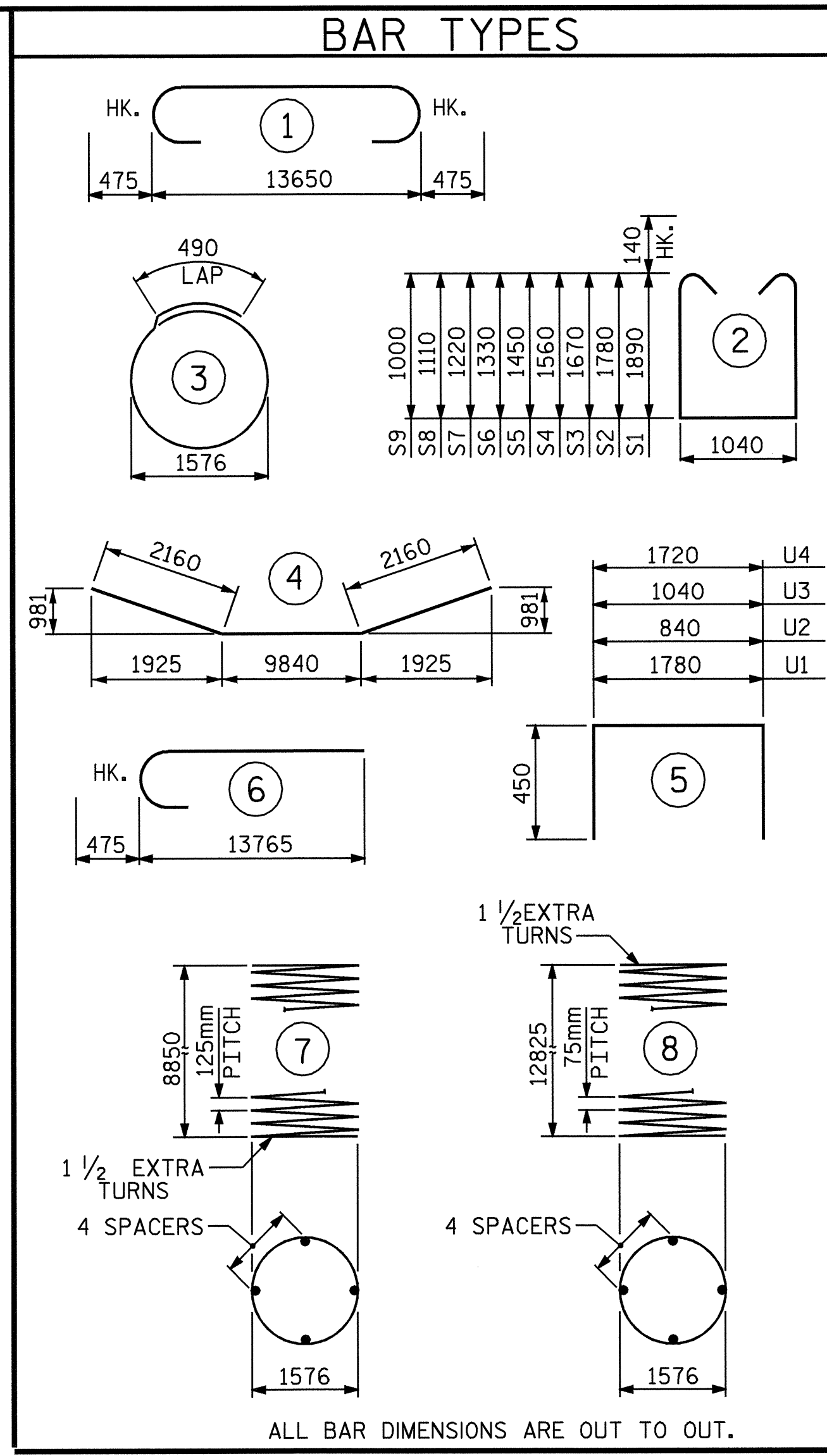


PLAN OF COLUMNS & DRILLED PIERS



ALL BAR DIMENSIONS ARE OUT TO OUT.

BILL OF MATERIAL BENT 2

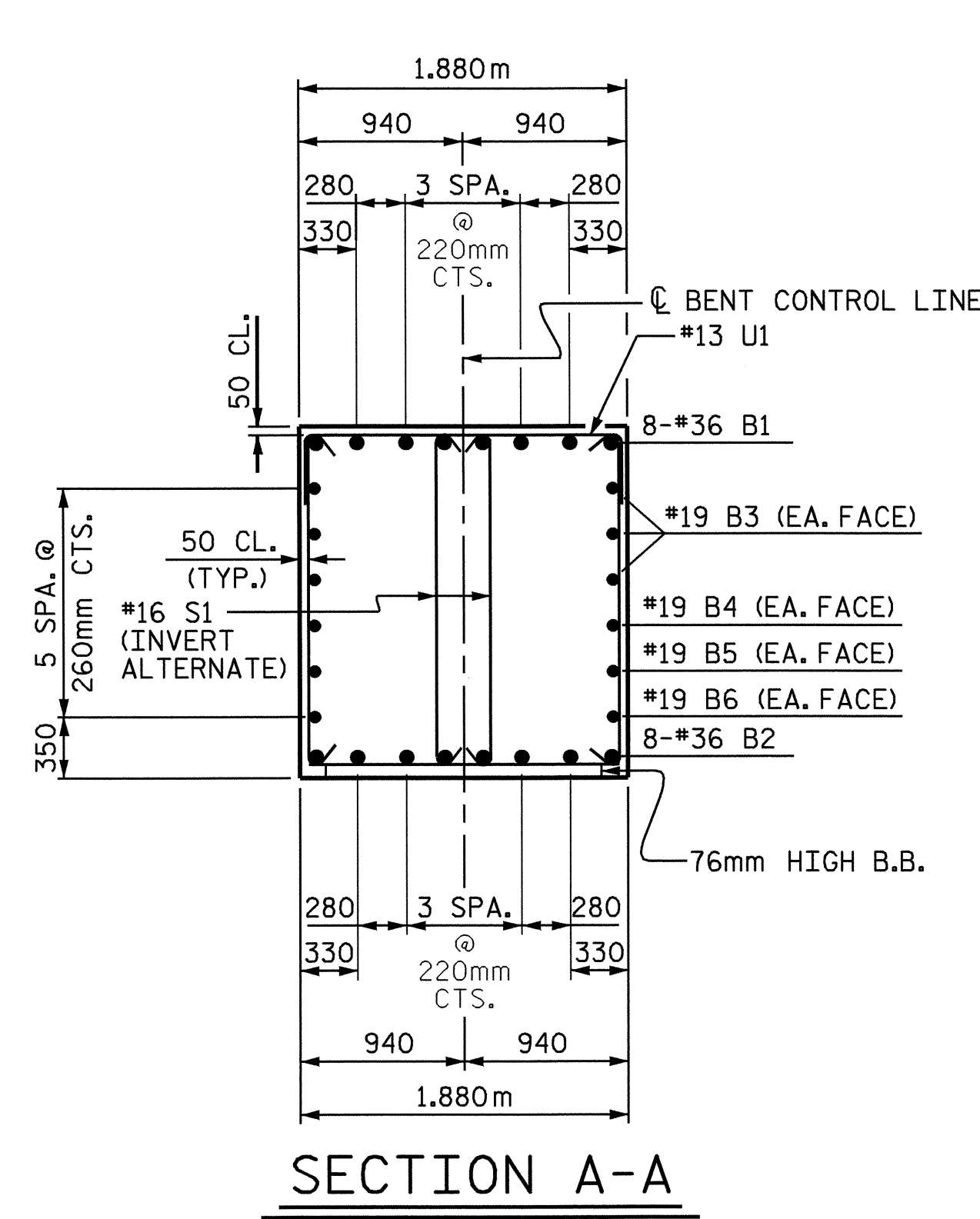
BAR	NO.	SIZE	TYPE	LENGTH	WEIGHT
B1	8	36	1	14600	924
B2	8	36	4	14160	896
B3	6	19	STR	13700	184
B4	2	19	STR	13060	58
B5	2	19	STR	12040	54
B6	2	19	STR	11020	49
B7	8	13	STR	5440	44
M1	48	43	STR	12420	6784
S1	48	16	2	5100	380
S2	4	16	2	4880	30
S3	4	16	2	4660	29
S4	4	16	2	4440	28
S5	4	16	2	4220	26
S6	4	16	2	3980	25
S7	4	16	2	3760	23
S8	4	16	2	3540	22
S9	4	16	2	3320	21
S10	20	16	3	5440	169
U1	31	13	5	2680	83
U2	5	13	5	1740	9
U3	5	13	5	1940	10
U4	7	13	5	2620	16
V1	48	36	6	14240	5404

REINFORCING STEEL	kg	15268
SP-1	2	354940
SP-2	2	845560

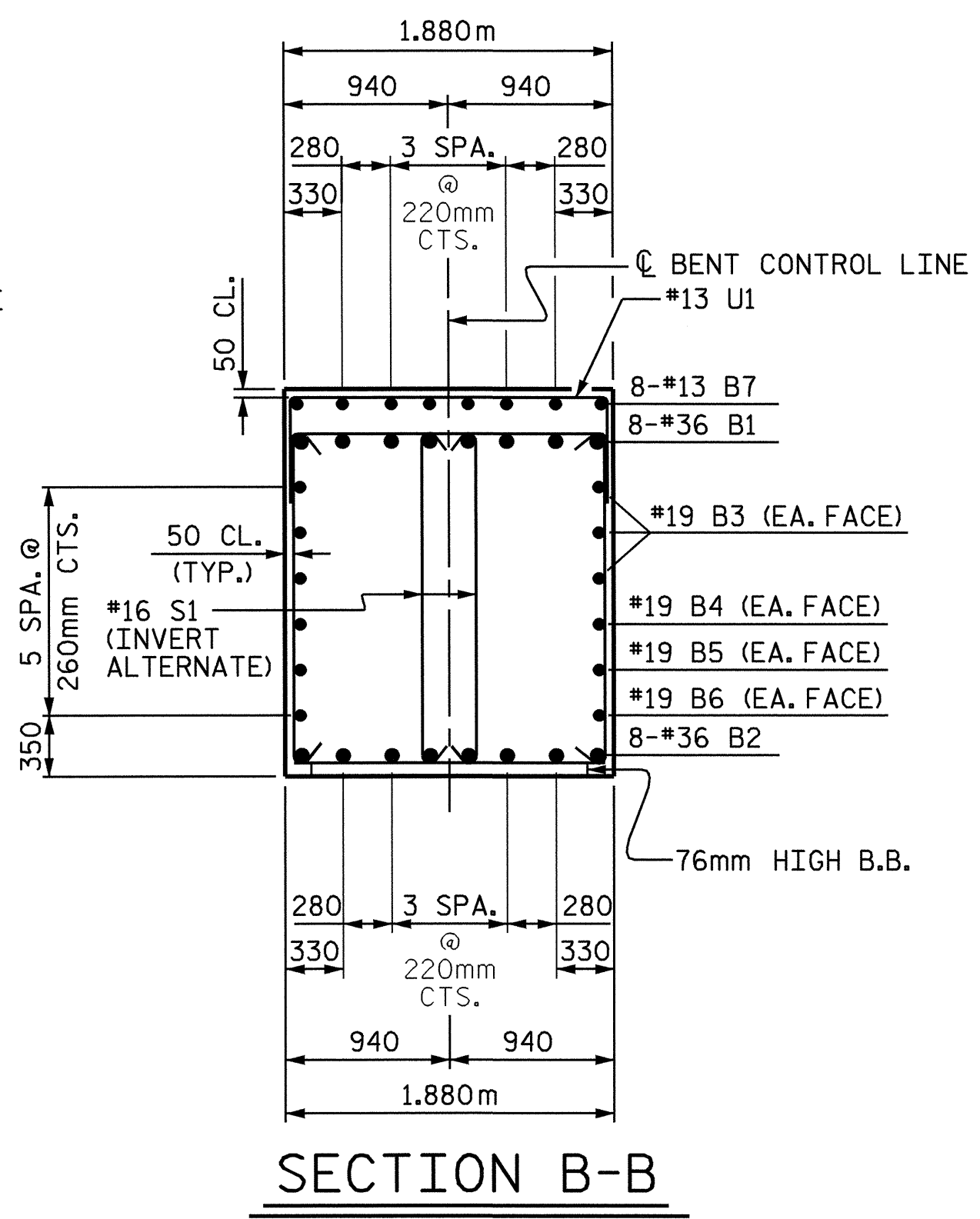
TOTAL SPIRAL COLUMN REINFORCING STEEL	kg	3727
CLASS A CONCRETE BREAKDOWN		
POUR #2 (COLUMNS)	C.M.	56.3
POUR #3 (BENT CAP)	C.M.	50.3
TOTAL	C.M.	106.6

DRILLED PIERS		
DRILLED PIER CONCRETE		
POUR #1 (DRILLED PIERS)	C.M.	47.2
1828mm Ø DRILLED PIERS IN SOIL	METERS	11.0
1828mm Ø DRILLED PIERS NOT IN SOIL	METERS	7.0
CROSSHOLE SONIC LOGGING	EA.	1
CSL TUBES	METERS	117.0

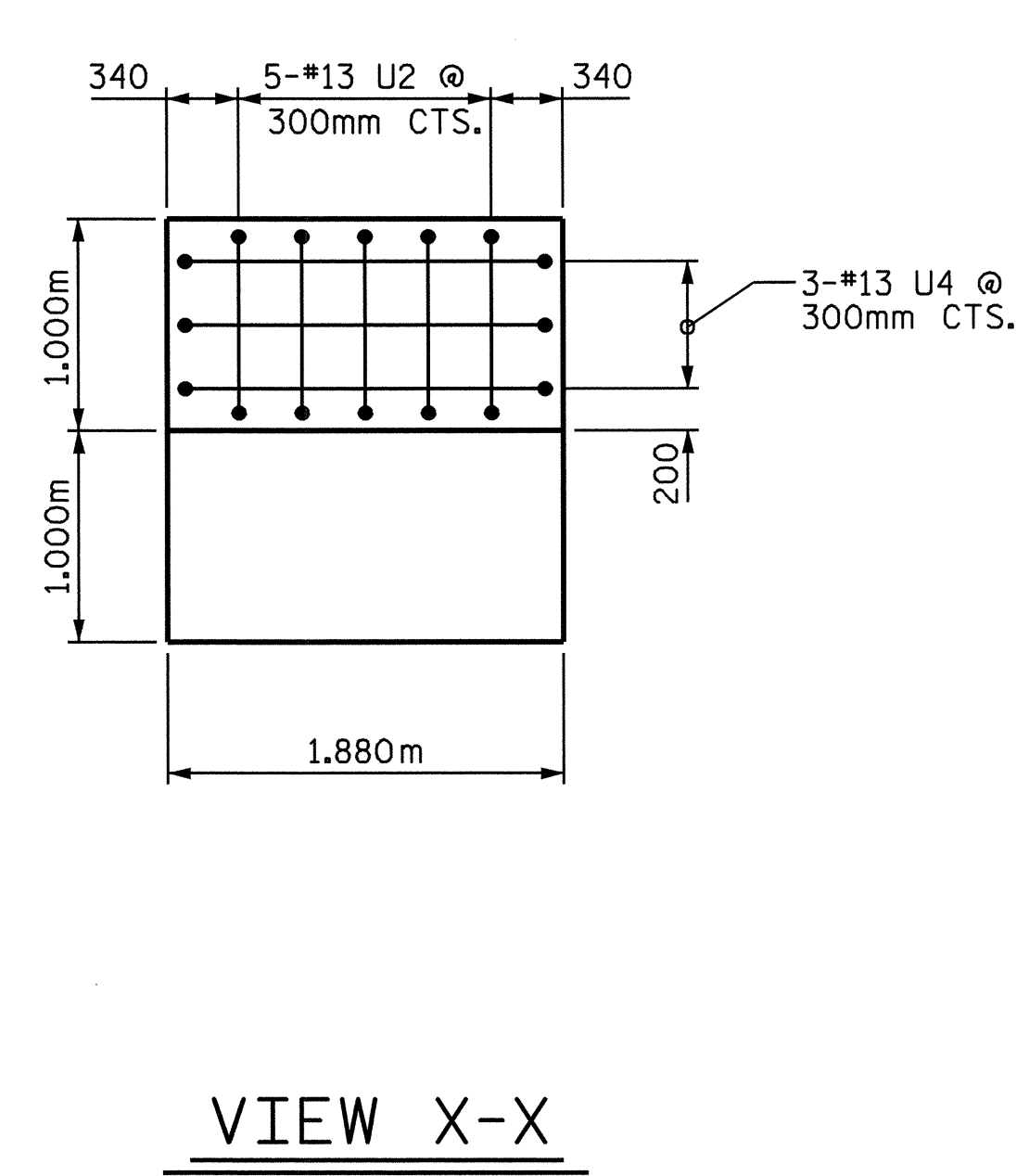
\*\* THE "SP" SPIRAL REINFORCING STEEL SHALL BE W31 OR D-31 COLD DRAWN WIRE OR #16 PLAIN OR DEFORMED BAR.



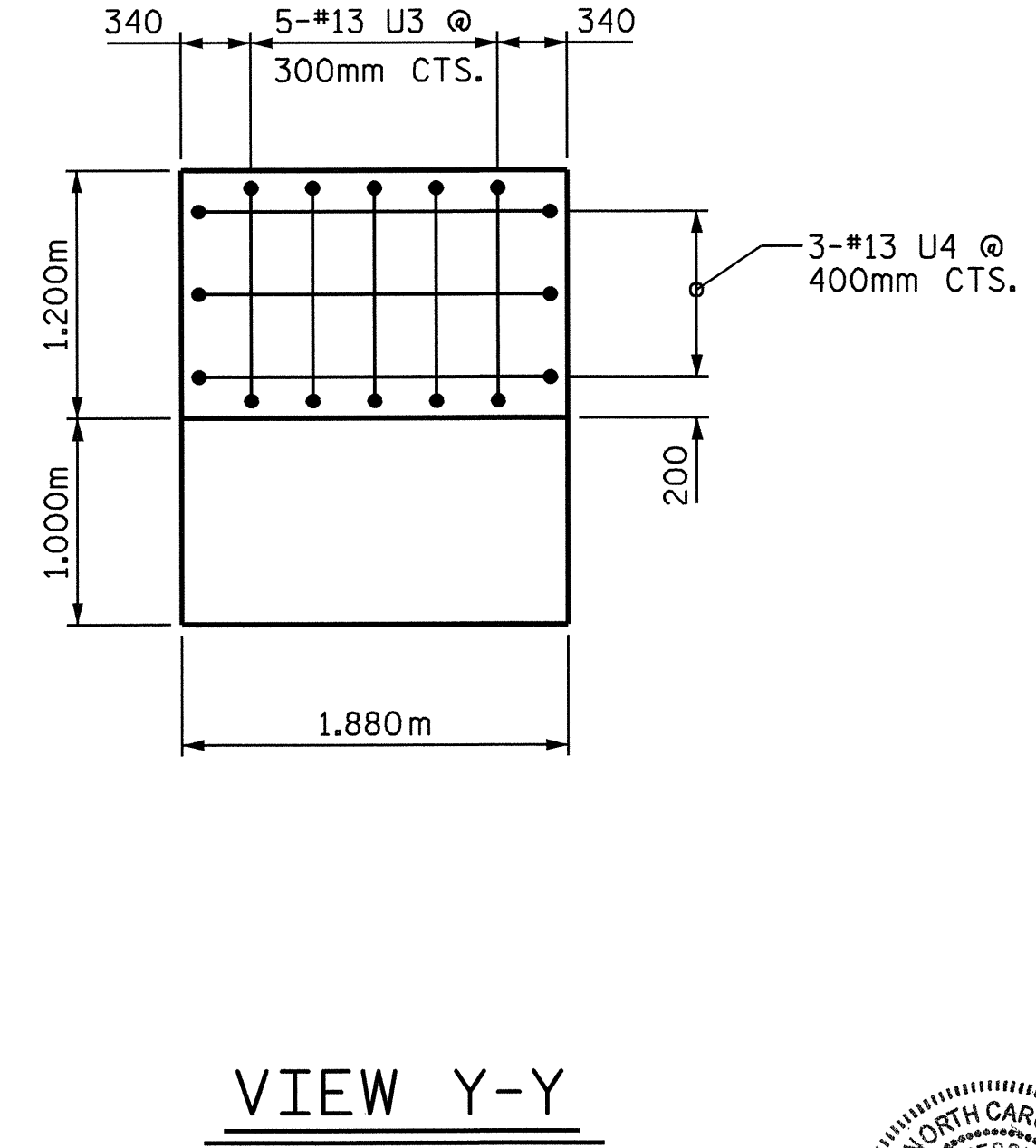
SECTION A-A



SECTION B-B



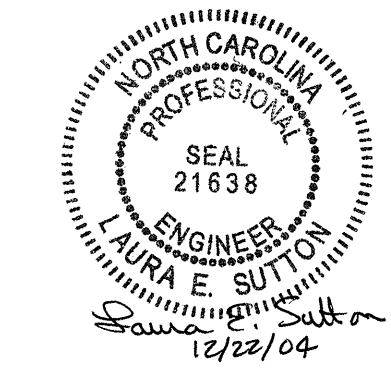
VIEW X-X



VIEW Y-Y

DRAWN BY : A. K. PATEL DATE : 10/08/04  
 CHECKED BY : J. D. HAWK DATE : 10/18/04

21-DEC-2004 07:22  
 W:\Squad\vr0977g\str4\jhawk\R0977A.sd\_b\*.04.dgn  
 Isuttion



PROJECT NO. R-0977A  
 CHEROKEE COUNTY  
 STATION: 41+19.524-LREV-  
 SHEET 2 OF 2

STATE OF NORTH CAROLINA DEPARTMENT OF TRANSPORTATION RALEIGH						
SUBSTRUCTURE BENT 2						
REVISIONS					SHEET NO.	
NO.	BY:	DATE:	NO.	BY:	DATE:	TOTAL SHEETS
1			3			5-161
2			4			230