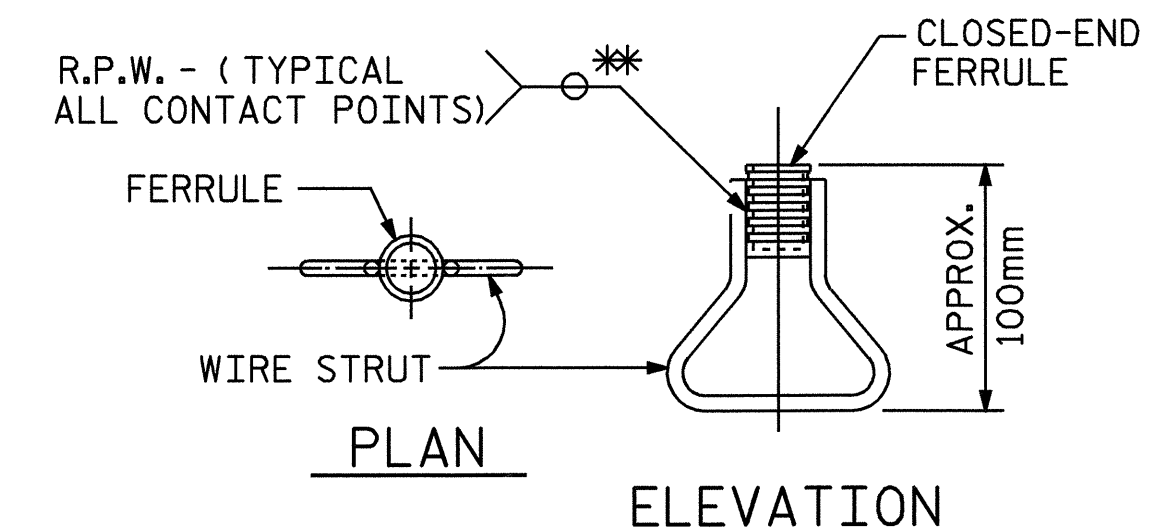
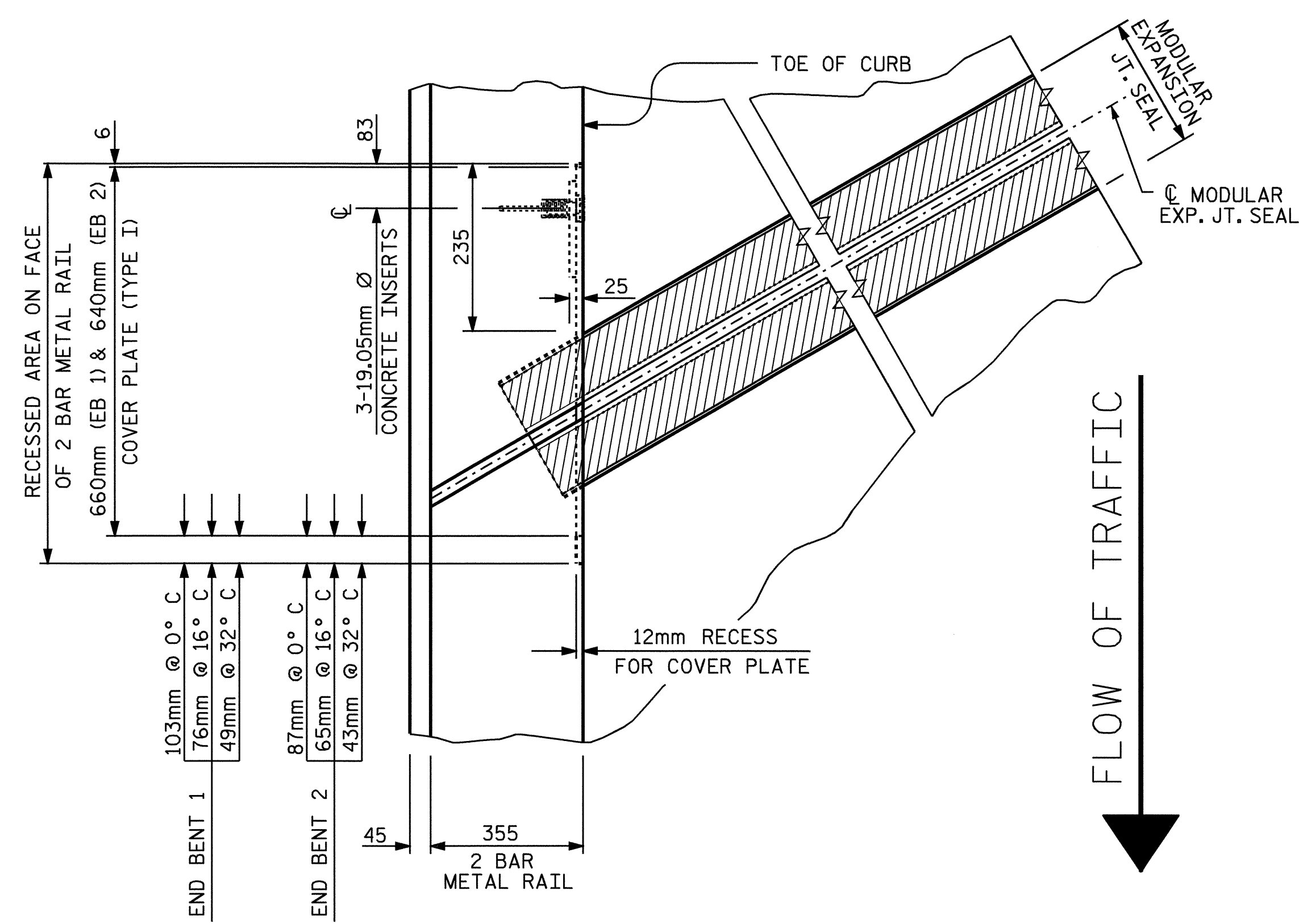


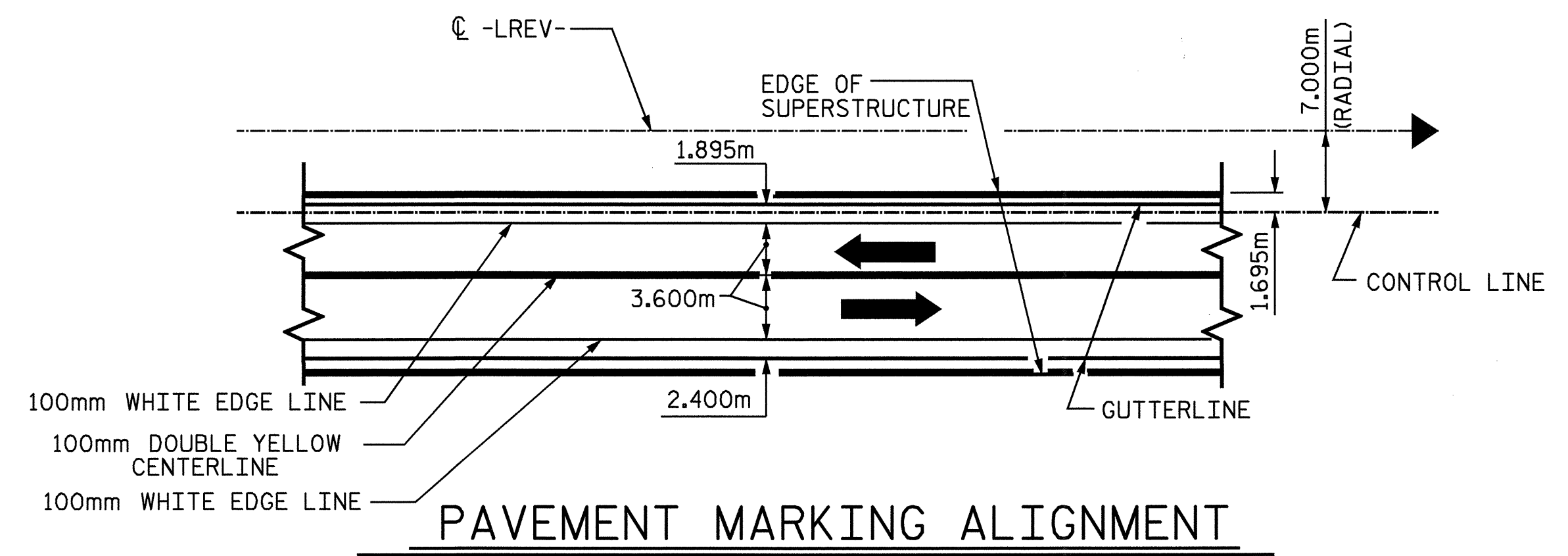
	SKEW ANGLE (TAN. TO CURVE)	TOTAL MOVEMENT ALONG CL ROADWAY
END BENT #1	66°-46'-07"	96mm
END BENT #2	66°-50'-19"	79mm



CONCRETE INSERT
 ** EACH WELDED ATTACHMENT OF WIRE TO FERRULE SHALL DEVELOP THE TENSILE STRENGTH OF THE WIRE.



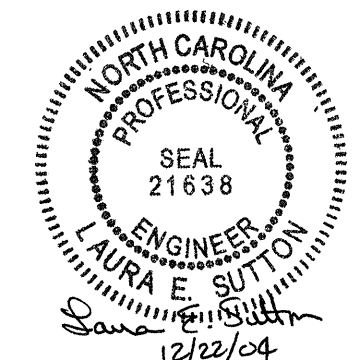
PLAN OF EXPANSION JOINT SEAL - LEFT SIDE



PAVEMENT MARKING ALIGNMENT

PROJECT NO. R-0977A
CHEROKEE COUNTY
 STATION: 68+58.000-LREV-

SHEET 1 OF 2



STATE OF NORTH CAROLINA DEPARTMENT OF TRANSPORTATION RALEIGH					
MODULAR EXPANSION JOINT SEAL DETAILS FOR CONCRETE PARAPET					
REVISIONS					SHEET NO.
NO.	BY:	DATE:	NO.	BY:	DATE:
1			3		
2			4		
					S-206
					TOTAL SHEETS 250

ASSEMBLED BY : B.N.BARODAWALA DATE : 9-1-04
 CHECKED BY : MIKE ALLEN DATE : 10-21-04

21-DEC-2004 15:13
 W:\SquadL\0977a\str5\bbarodawala\R0977A_sd_JS_05.dgn
 lsutton

STR. #5