

**NOTES**

STIRRUPS IN CAP MAY BE SHIFTED AS NECESSARY TO CLEAR ANCHOR BOLTS.

HOOKS ON "V" BARS MAY BE TURNED AS NECESSARY FOR PLACING REINFORCING STEEL.

ALL STEEL IN THE DRILLED PIERS IS INCLUDED IN THE PAY ITEMS FOR "REINFORCING STEEL" AND "SPIRAL COLUMN REINFORCING STEEL".

THE CONTRACTOR'S ATTENTION IS CALLED TO THE FACT THAT THE LONGITUDINAL REINFORCEMENT FOR THE DRILLED PIERS IS DETAILED WITH ONE METER OF EXTRA LENGTH.

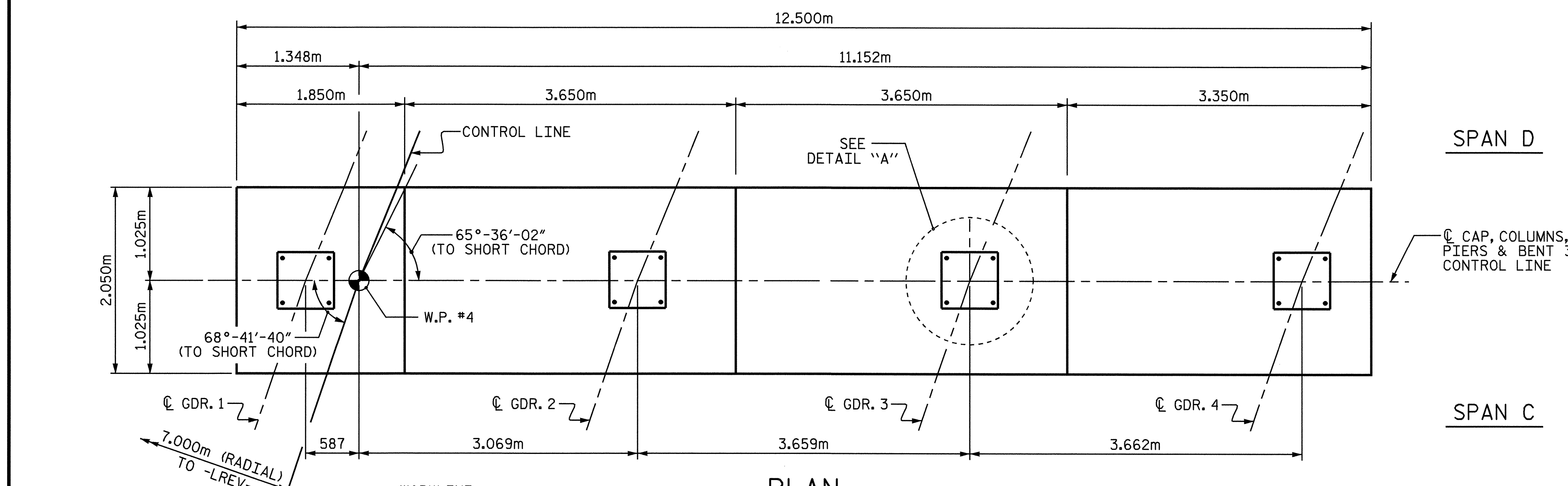
THE LOCATION OF THE CONSTRUCTION JOINT IN THE DRILLED PIERS IS BASED ON AN APPROXIMATE GROUND LINE ELEVATION. IF THE CONSTRUCTION JOINT IS ABOVE THE ACTUAL GROUND LINE ELEVATION, THE CONTRACTOR SHALL PLACE THE CONSTRUCTION JOINT 300mm BELOW THE GROUND LINE.

THE CONTRACTOR SHALL ADJUST THE GIRDER BUILDPUPS AS NECESSARY TO INCORPORATE A MAXIMUM PERMISSIBLE VARIATION IN POT BEARING DEPTH OF 13mm, SEE SPECIAL PROVISIONS FOR POT BEARINGS.

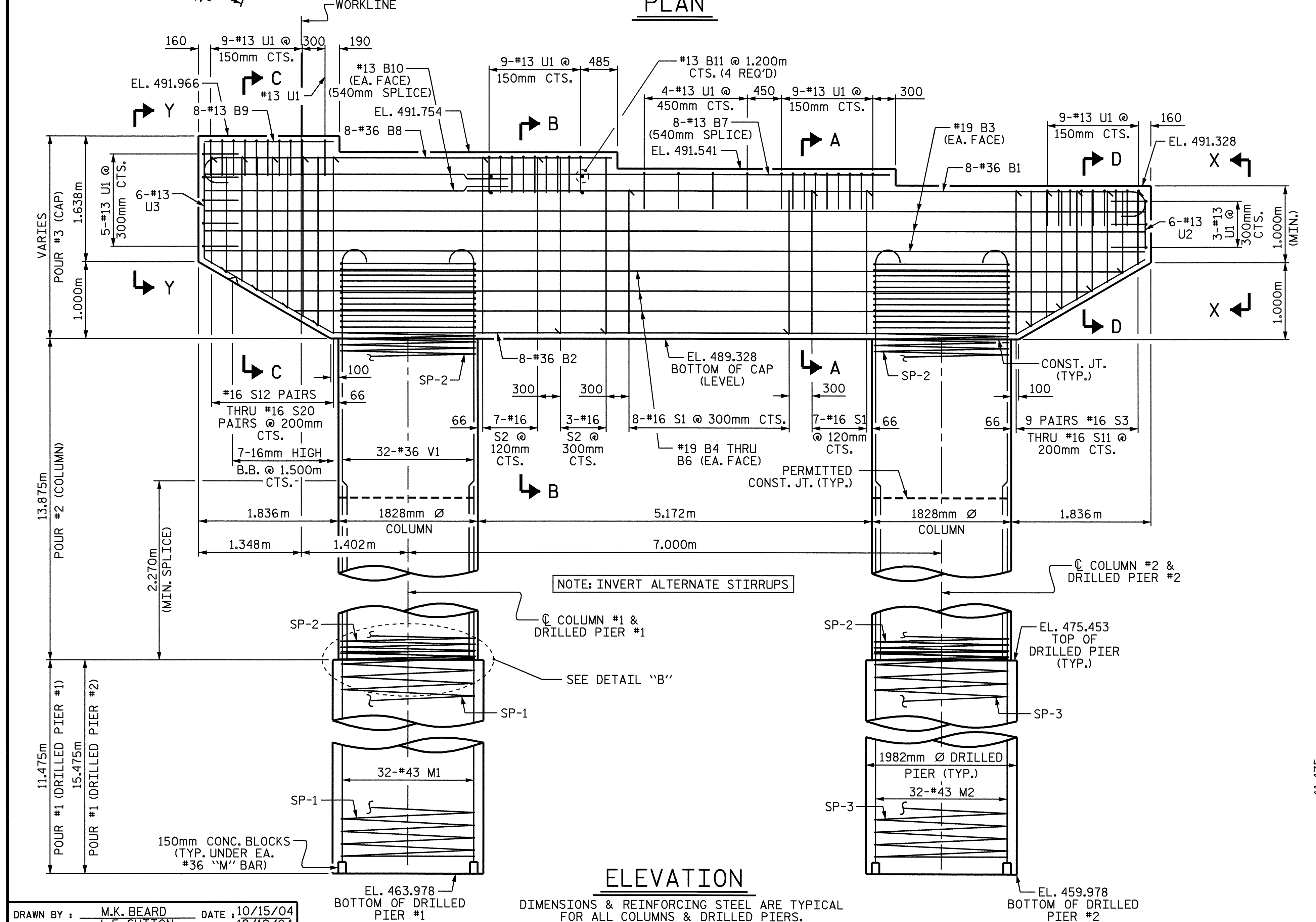
SPLICING OF THE LONGITUDINAL BARS IN THE DRILLED PIER WILL NOT BE PERMITTED.

FOR PIPE INSERT DETAILS, SEE "POT BEARING DETAILS" SHEETS.

FOR DRILLED PIERS, SEE SPECIAL PROVISIONS.

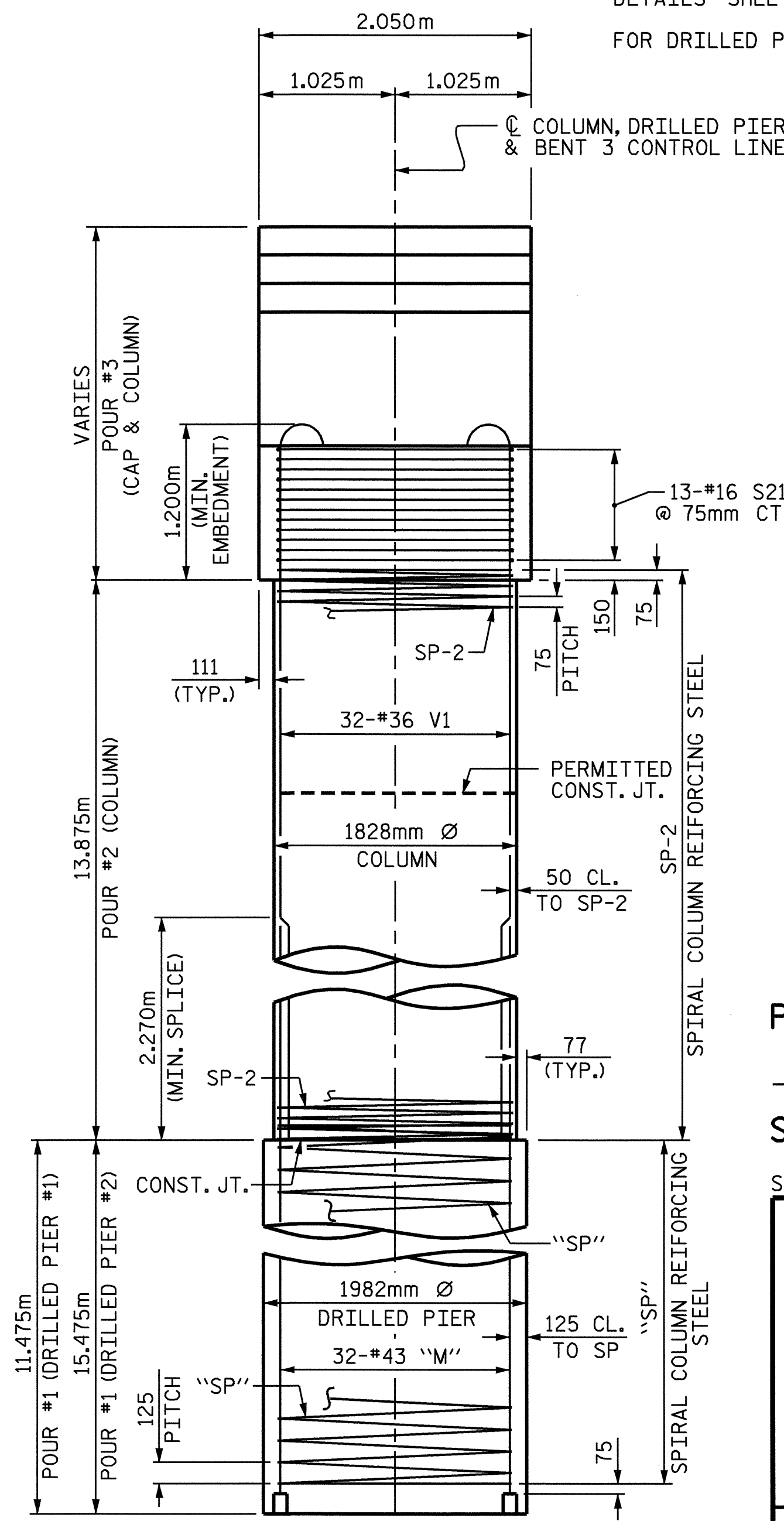


**PLAN**

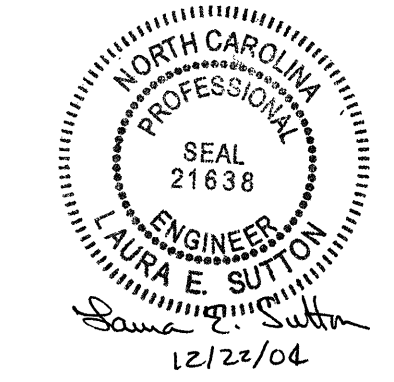


**ELEVATION**

DIMENSIONS & REINFORCING STEEL ARE TYPICAL FOR ALL COLUMNS & DRILLED PIERS.



**END ELEVATION**



PROJECT NO. R-0977A  
CHEROKEE COUNTY  
 STATION: 68+58.000-LREV-

SHEET 1 OF 3

STATE OF NORTH CAROLINA  
 DEPARTMENT OF TRANSPORTATION  
 RALEIGH

SUBSTRUCTURE  
**BENT 3**

REVISIONS				SHEET NO.	
NO.	BY:	DATE:	NO.	BY:	DATE:
1			3		
2			4		
					TOTAL SHEETS
					230

DRAWN BY: M.K. BEARD DATE: 10/15/04  
 CHECKED BY: L.E. SUTTON DATE: 12/19/04

22-DEC-2004 10:51  
 W:\SquadL\0977a\str5\kbeard\N0977A\_sd.B\*\_05.dgn  
 lsutton