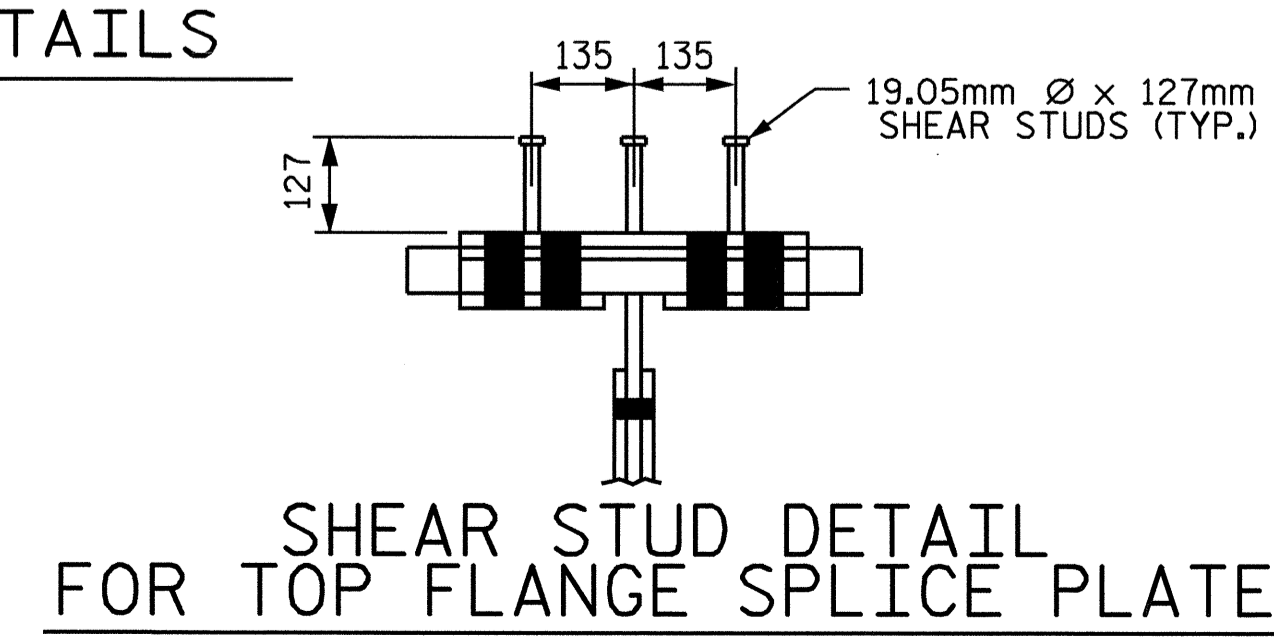
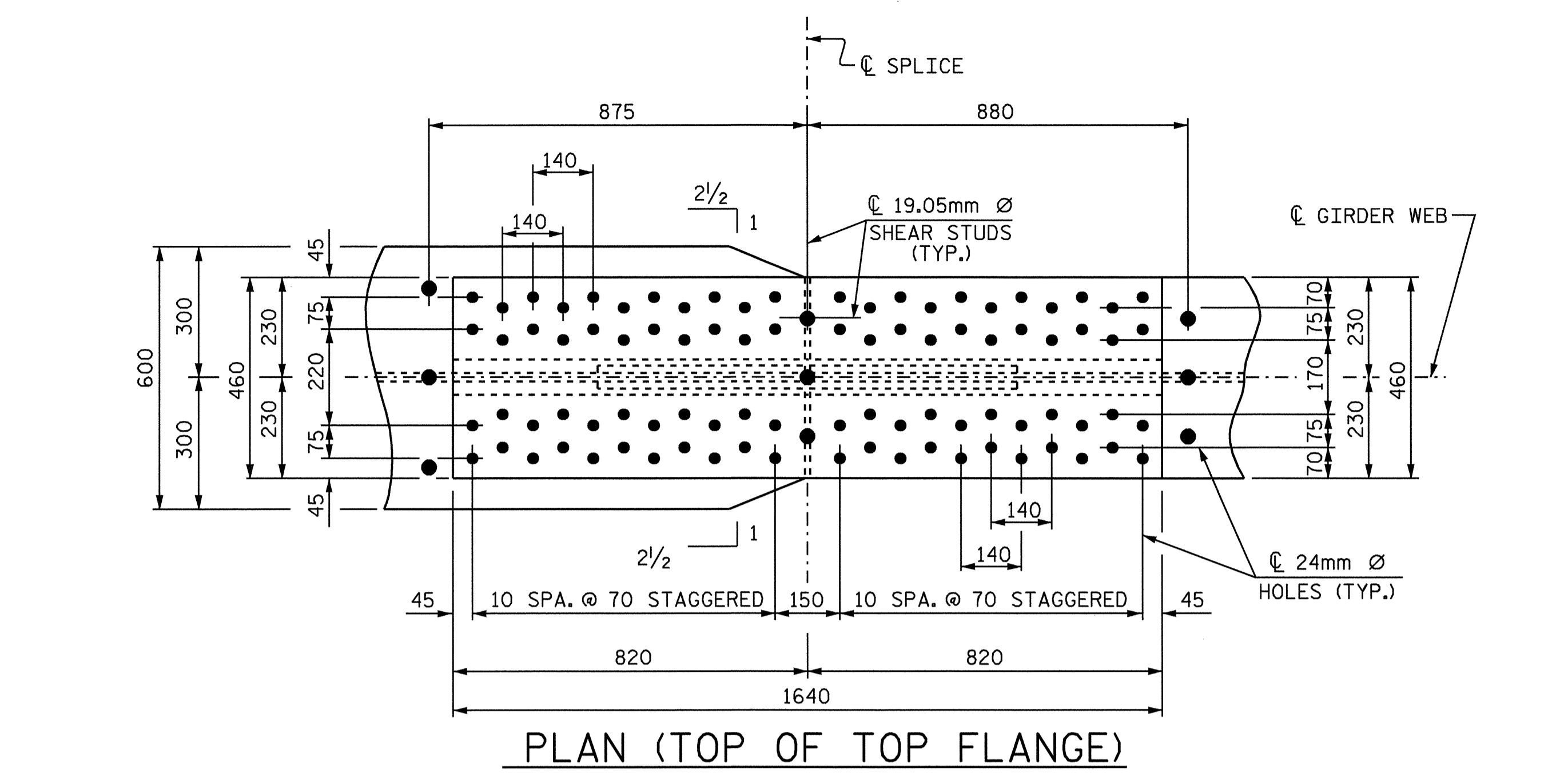


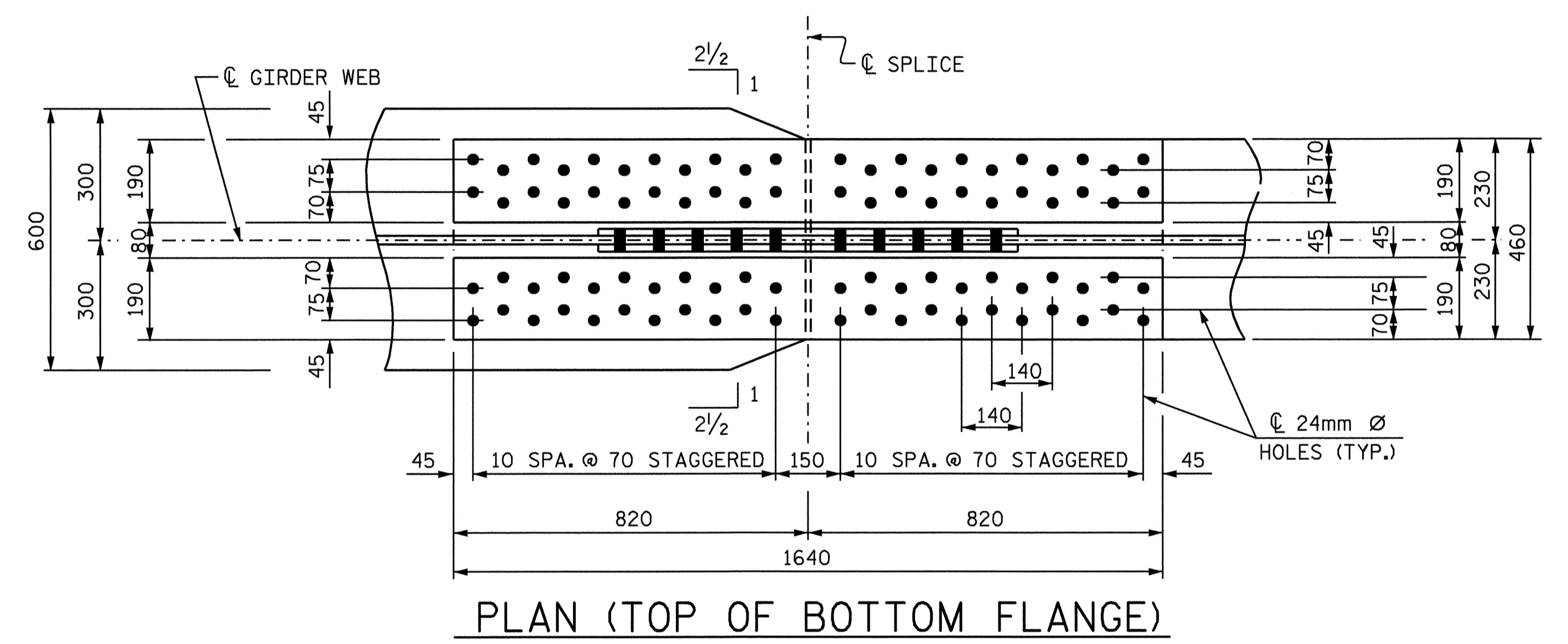
SECTION A-A
ELEVATION
BOLTED FIELD SPLICE B DETAILS



SHEAR STUD DETAIL
FOR TOP FLANGE SPLICE PLATE



PLAN (TOP OF TOP FLANGE)



PLAN (TOP OF BOTTOM FLANGE)

DESCRIPTION	SIZE	NO. REQ'D. FOR ONE FIELD SPLICE	TOTAL REQ'D. FOR SPLICE B
WEB SPLICE PLATE	16 x 970 x 2800	2	16
OUTER SPLICE PLATE TOP FLANGE W/SHEAR STUDS	32 x 460 x 1640	1	8
INNER SPLICE PLATE TOP FLANGE	32 x 190 x 1640	2	16
FILL PLATE TOP FLANGE	14 x 460 x 790	1	8
FILL PLATE BOTTOM FLANGE	14 x 460 x 790	1	8
INNER SPLICE PLATE BOTTOM FLANGE	32 x 190 x 1640	2	16
OUTER SPLICE PLATE BOTTOM FLANGE	32 x 460 x 1640	1	8

NOTE: 24mm Ø HOLES FOR 22.23mm Ø BOLTS.

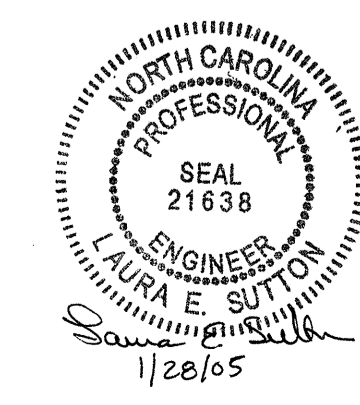
PROJECT NO. R-0977A
CHEROKEE COUNTY
 STATION: 16+02.300-LC1B-

SHEET 6 OF 7

STATE OF NORTH CAROLINA
 DEPARTMENT OF TRANSPORTATION
 RALEIGH

SUPERSTRUCTURE
 STRUCTURAL STEEL
 DETAILS

REVISIONS						SHEET NO.
NO.	BY:	DATE:	NO.	BY:	DATE:	S-18
1			3			TOTAL SHEETS
2			4			230



DRAWN BY: A.S. CALLAWAY DATE: 2/18/04
 CHECKED BY: B.N. BARODAWALA DATE: 6/17/04

28-JAN-2005 16:03
 W:\SquadL\r0977a\str\scallaway\R0977A_sd_SS_01.dgn
 lsutton

STR. #1