

NOTES

THE STEEL PLATES SHALL CONFORM TO AASHTO M270 GRADE 250 OR APPROVED EQUAL AND BE PAINTED IN ACCORDANCE WITH THE STANDARD SPECIFICATIONS. AT THE CONTRACTOR'S OPTION, THE PLATES MAY BE METALLIZED AFTER FABRICATION TO A MINIMUM THICKNESS OF 0.150mm. SEE SPECIAL PROVISIONS FOR THERMAL SPRAYED COATINGS (METALLIZATION).

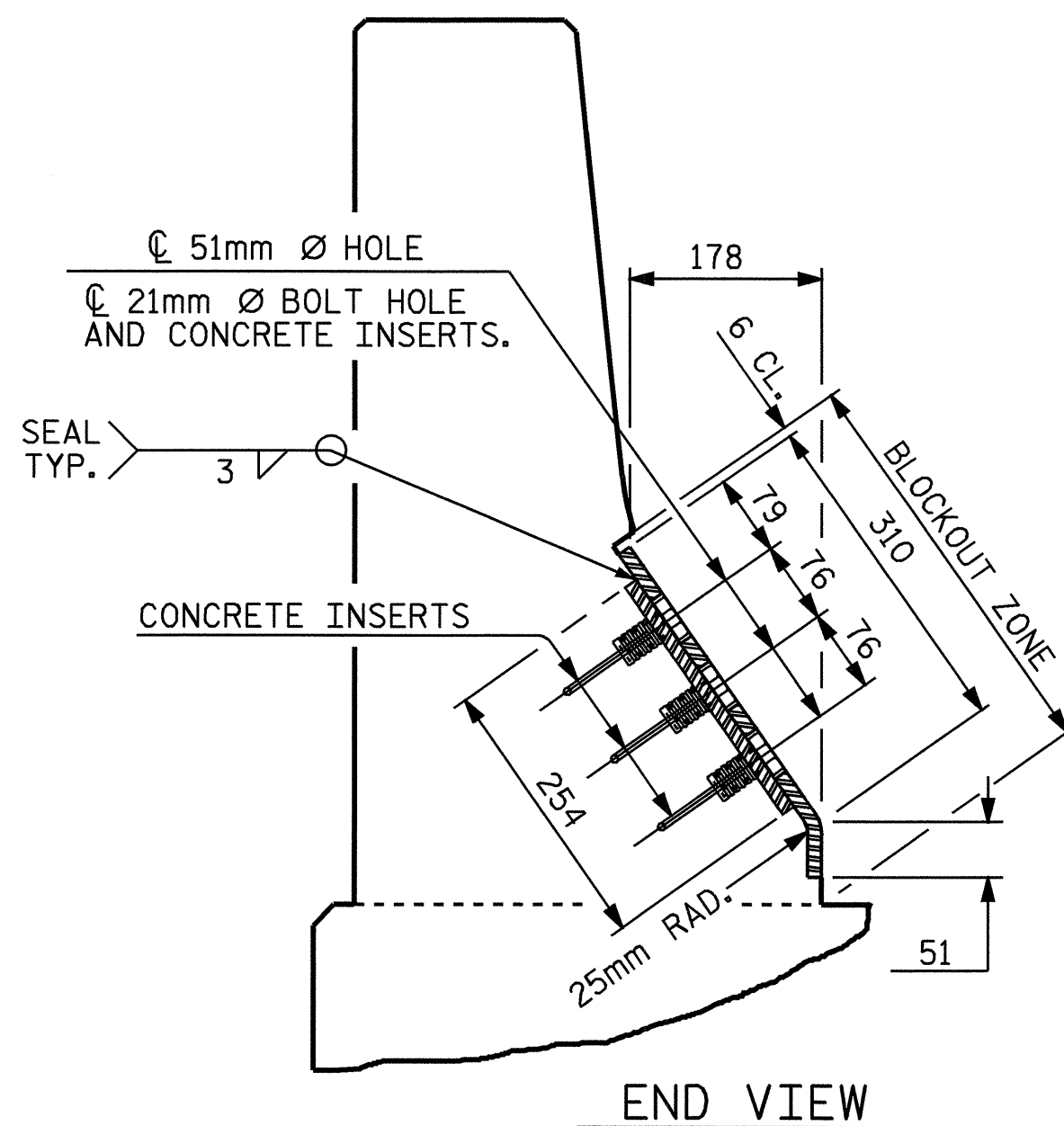
THE 19.05mm Ø HEX HEAD BOLTS SHALL CONFORM TO ASTM F593 ALLOY 304 STAINLESS STEEL.

THE 19.05mm CONCRETE INSERTS SHALL BE CLOSED-END FERRULES WITH LOOPE WIRE STRUTS ATTACHED TO THEM. THE INSERTS SHALL CONFORM TO AASHTO M169, GRADE 12L14 AND SHALL HAVE A TENSILE WORKING LOAD CAPACITY OF 13.3 kN.

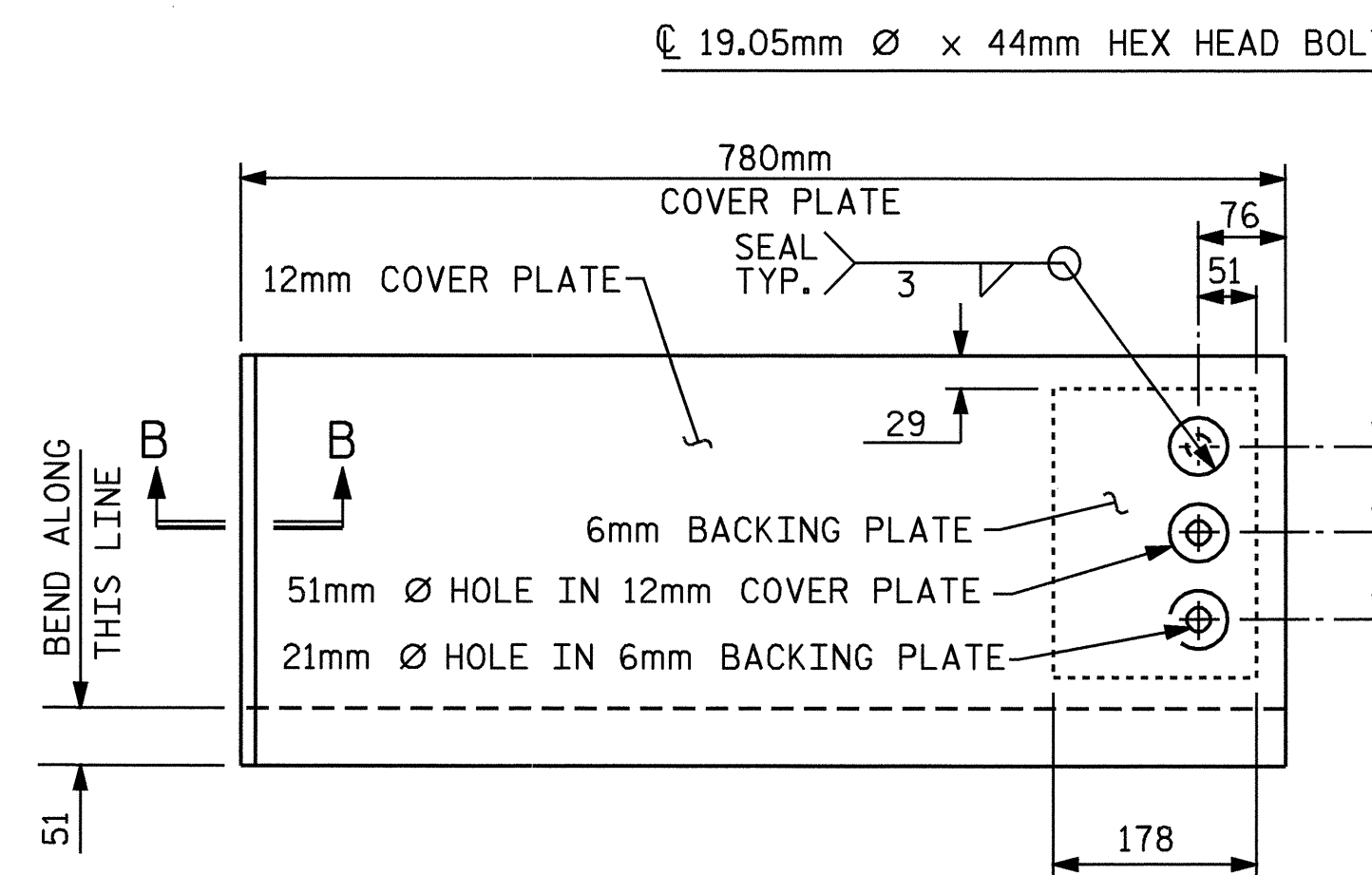
NO SEPARATE PAYMENT WILL BE MADE FOR FURNISHING AND INSTALLING THE COVER PLATE. THE ENTIRE COST OF THIS WORK SHALL BE INCLUDED IN THE LUMP SUM PRICE FOR "MODULAR EXPANSION JOINT SEALS."

SPECIAL SNOWPLOW PROTECTION IS REQUIRED. SEE SPECIAL PROVISION FOR MODULAR EXPANSION JOINT SEALS.

	SKEW ANGLE	TOTAL MOVEMENT ALONG C/Roadway
END BENT #1	120°00'00"	135mm

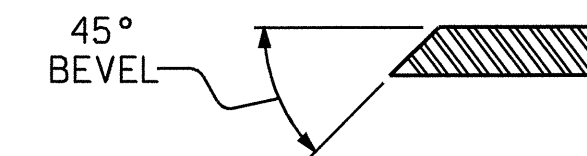


END VIEW

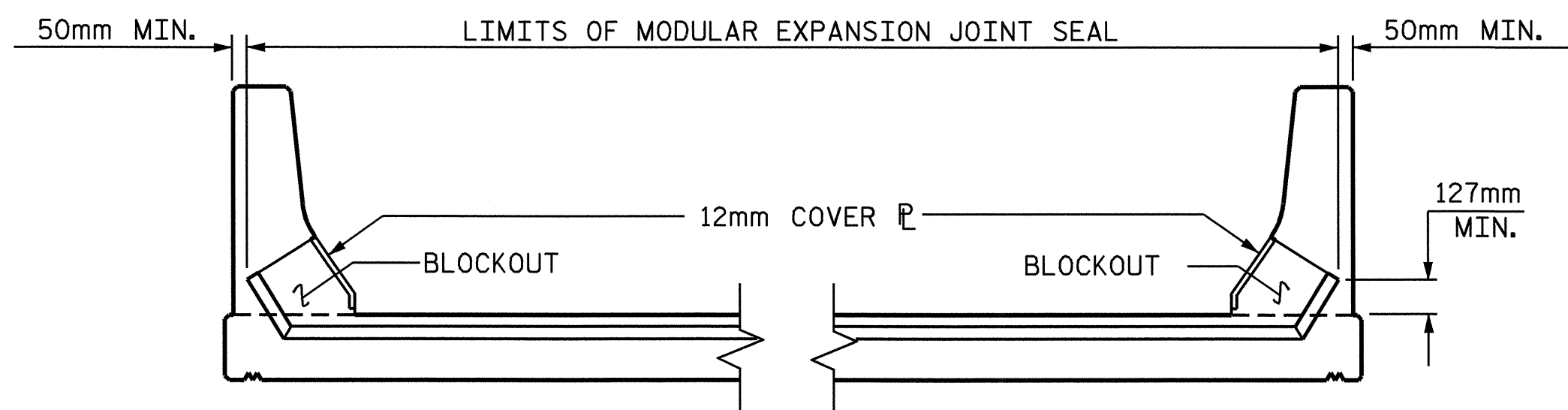


TYPE II - ELEVATION VIEW

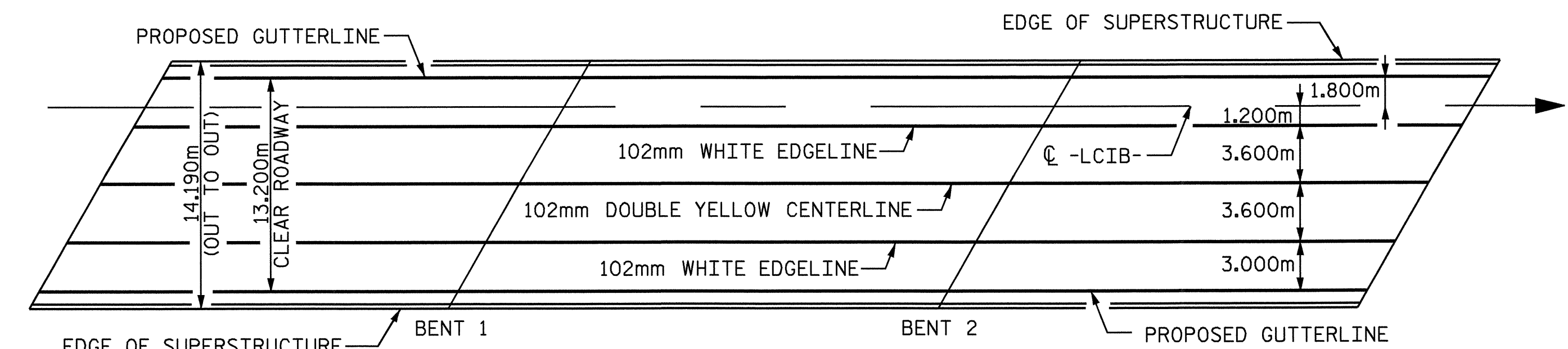
COVER PLATE DETAILS



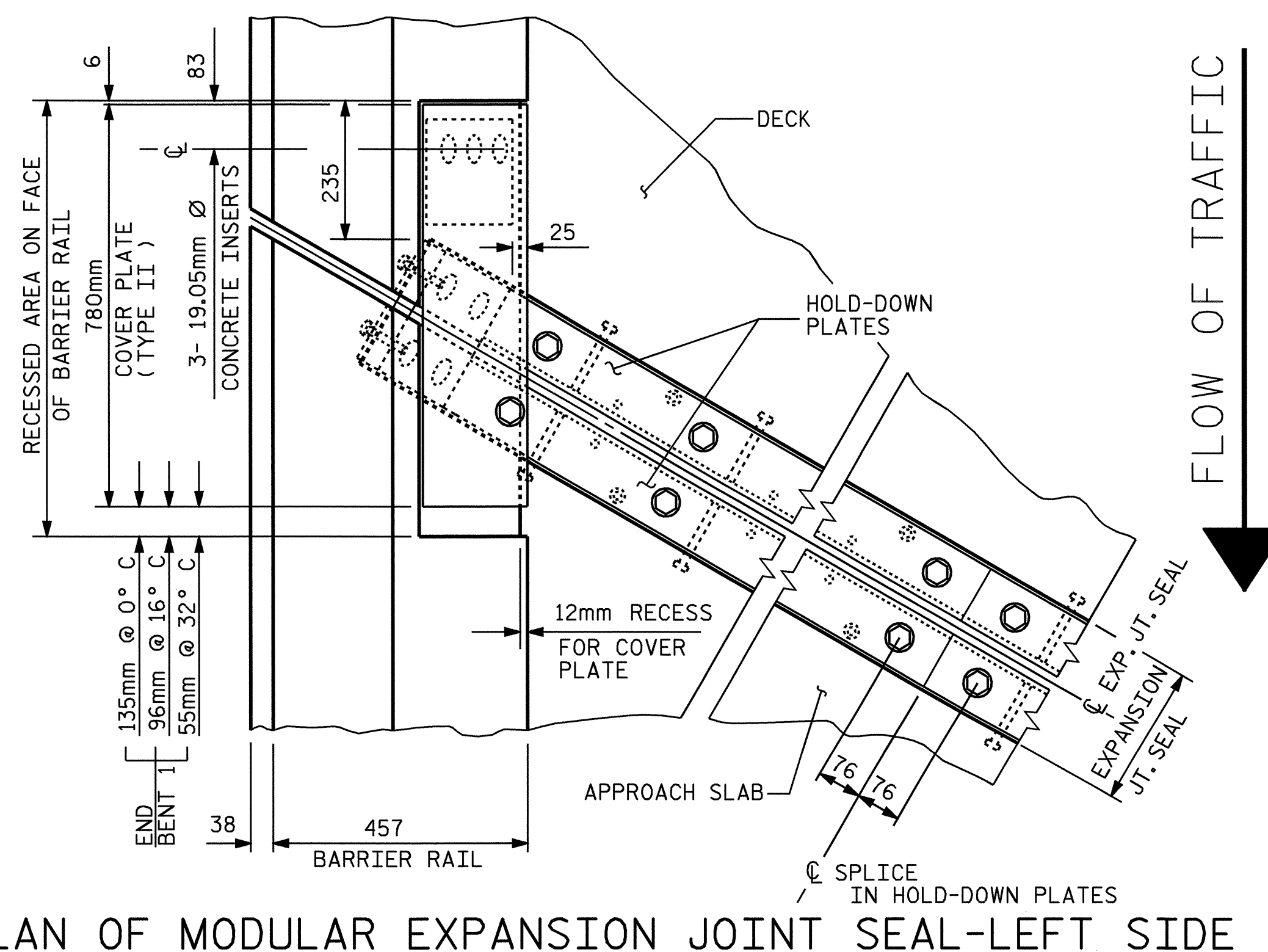
SECTION B-B



SKETCH SHOWING LIMITS OF MODULAR EXPANSION JOINT SEAL-BARRIER RAIL

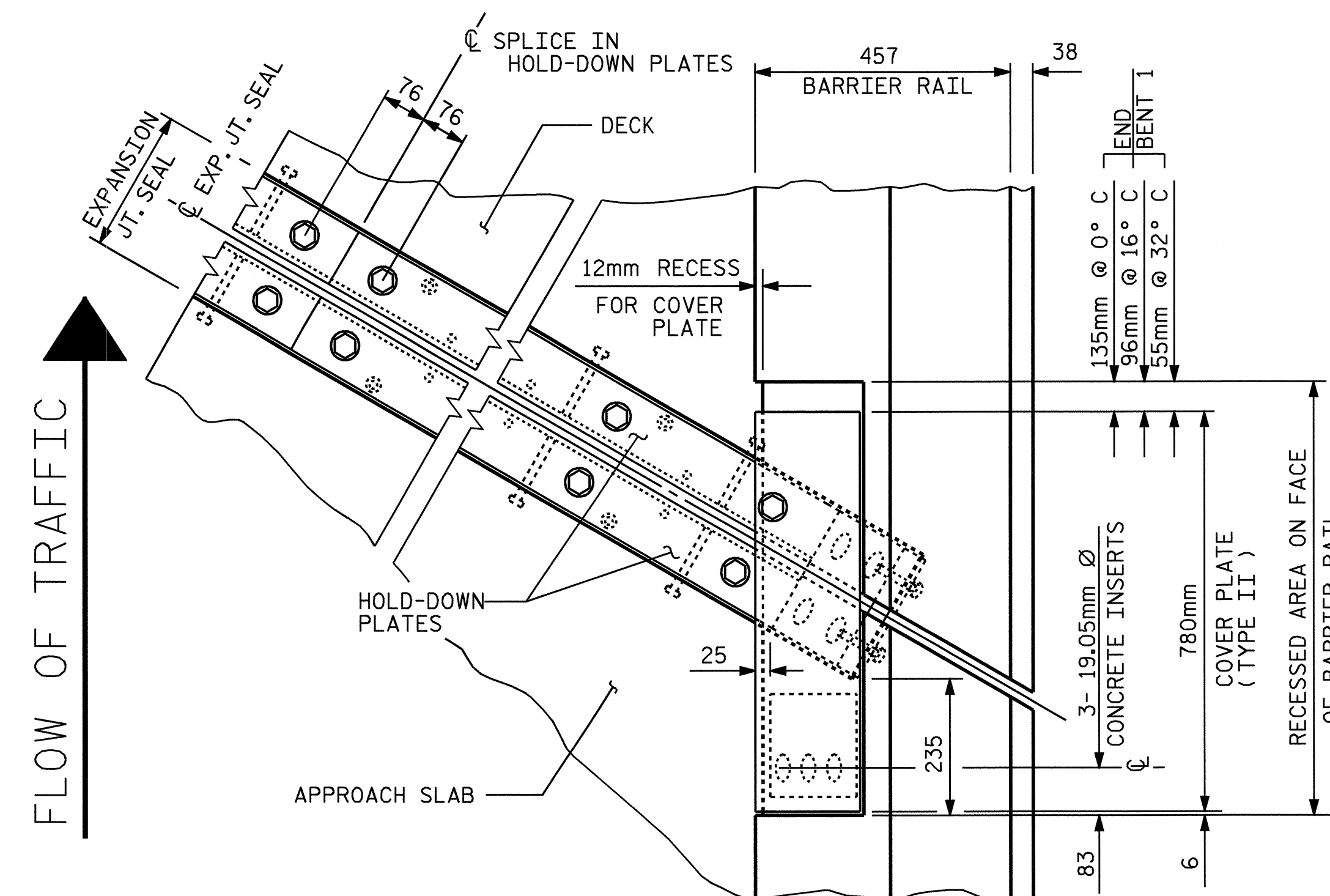


PAVEMENT MARKING ALIGNMENT



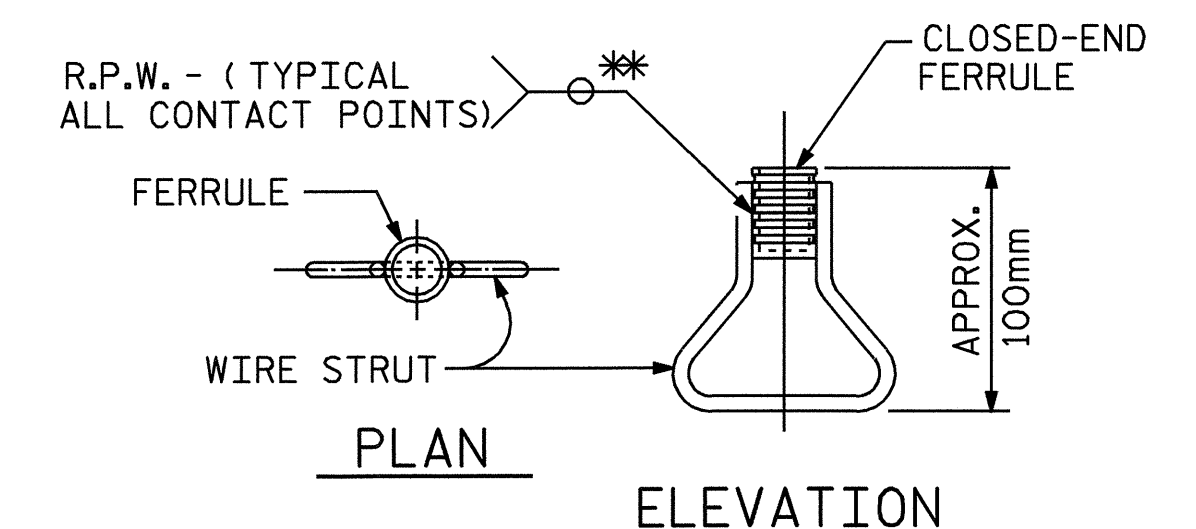
PLAN OF MODULAR EXPANSION JOINT SEAL-LEFT SIDE

FLOW OF TRAFFIC



PLAN OF MODULAR EXPANSION JOINT SEAL-RIGHT SIDE

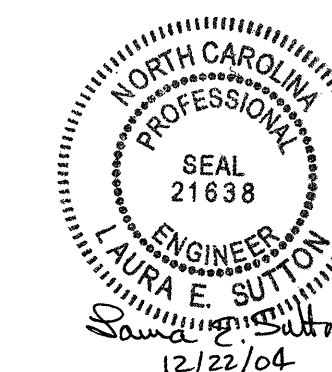
FLOW OF TRAFFIC



CONCRETE INSERT

* EACH WELDED ATTACHMENT OF WIRE TO FERRULE SHALL DEVELOP THE TENSILE STRENGTH OF THE WIRE.

PROJECT NO. R-0977A
 CHEROKEE COUNTY
 STATION: 16+02.300-LC1B-



STATE OF NORTH CAROLINA DEPARTMENT OF TRANSPORTATION RALEIGH					
STANDARD MODULAR EXPANSION JOINT SEAL DETAILS FOR BARRIER RAIL (AT END BENT #1)					
REVISIONS					
NO.	BY:	DATE:	NO.	BY:	DATE:
1			3		
2			4		

STR. #1

STD. NO. MEJS1SM

ASSEMBLED BY : A.S. CALLAWAY	DATE : 1/21/04
CHECKED BY : B.N. BARODAWALA	DATE : 6/17/04
DRAWN BY : EEM 7/96	REV. 7/17/98 RWW/LES
CHECKED BY : VAP 7/96	REV. 8/16/99 RAL/LES
	REV. 10/17/00 RWW/LES