

**NOTES**

STIRRUPS IN CAP MAY BE SHIFTED AS NECESSARY TO CLEAR ANCHOR BOLTS.

FOR EPOXY PROTECTIVE COATING, SEE SPECIAL PROVISIONS.

FOR PIPE INSERT DETAILS, SEE "PIN ROCKER BEARING DETAILS" SHEETS.

BACKWALL SHALL BE PLACED BEFORE APPLYING THE EPOXY PROTECTIVE COATING.

THE TOP SURFACE AREAS OF THE END BENT CAPS SHALL BE CURED IN ACCORDANCE WITH THE STANDARD SPECIFICATIONS EXCEPT THE MEMBRANE CURING COMPOUND METHOD SHALL NOT BE USED.

THE TOP SURFACE OF THE CAP EXCEPT THE BRIDGE SEAT BUILDUPS SHALL BE SLOPED TRANSVERSELY FROM THE FILL FACE TO THE BACK FACE AT THE RATE OF 2 %.

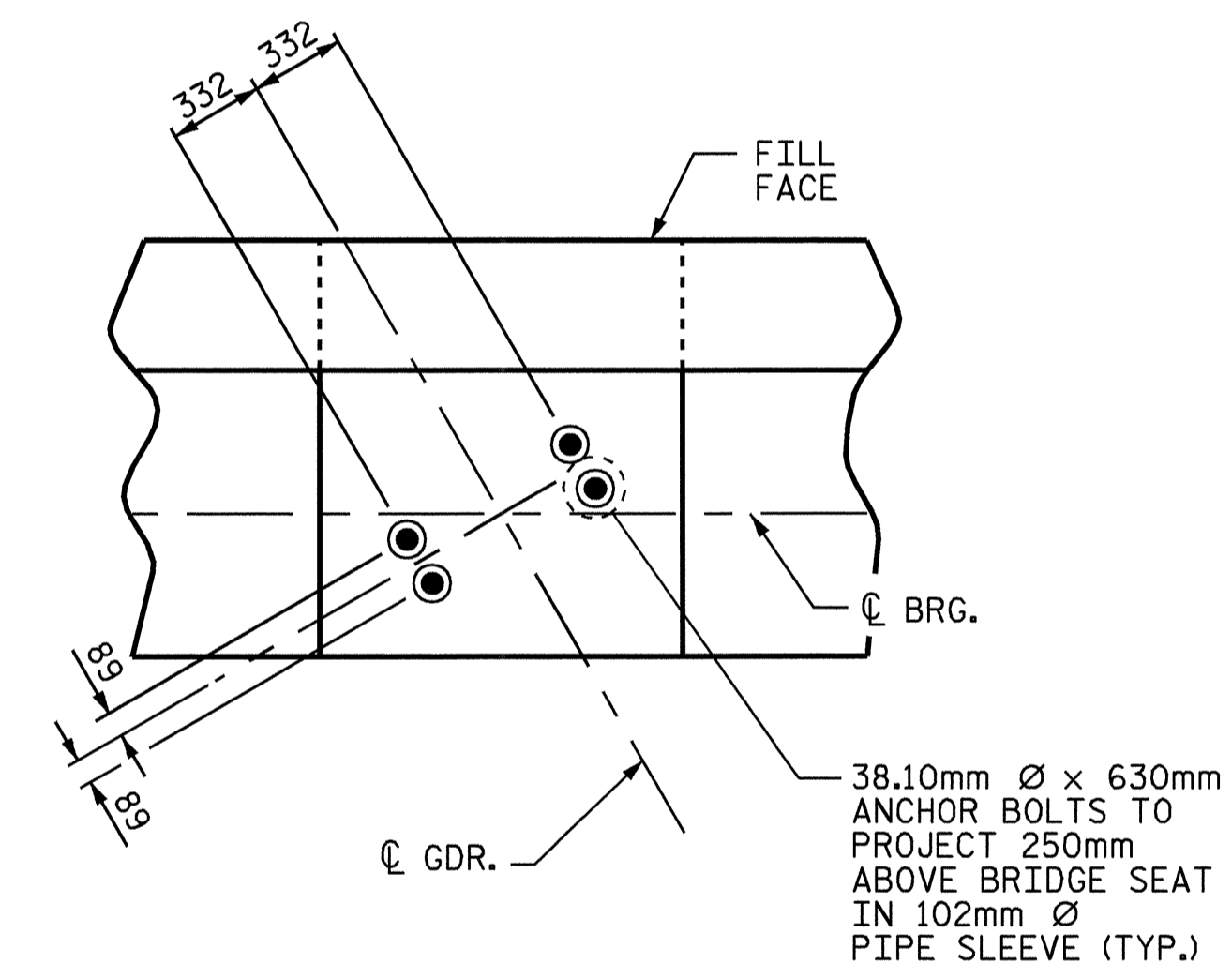
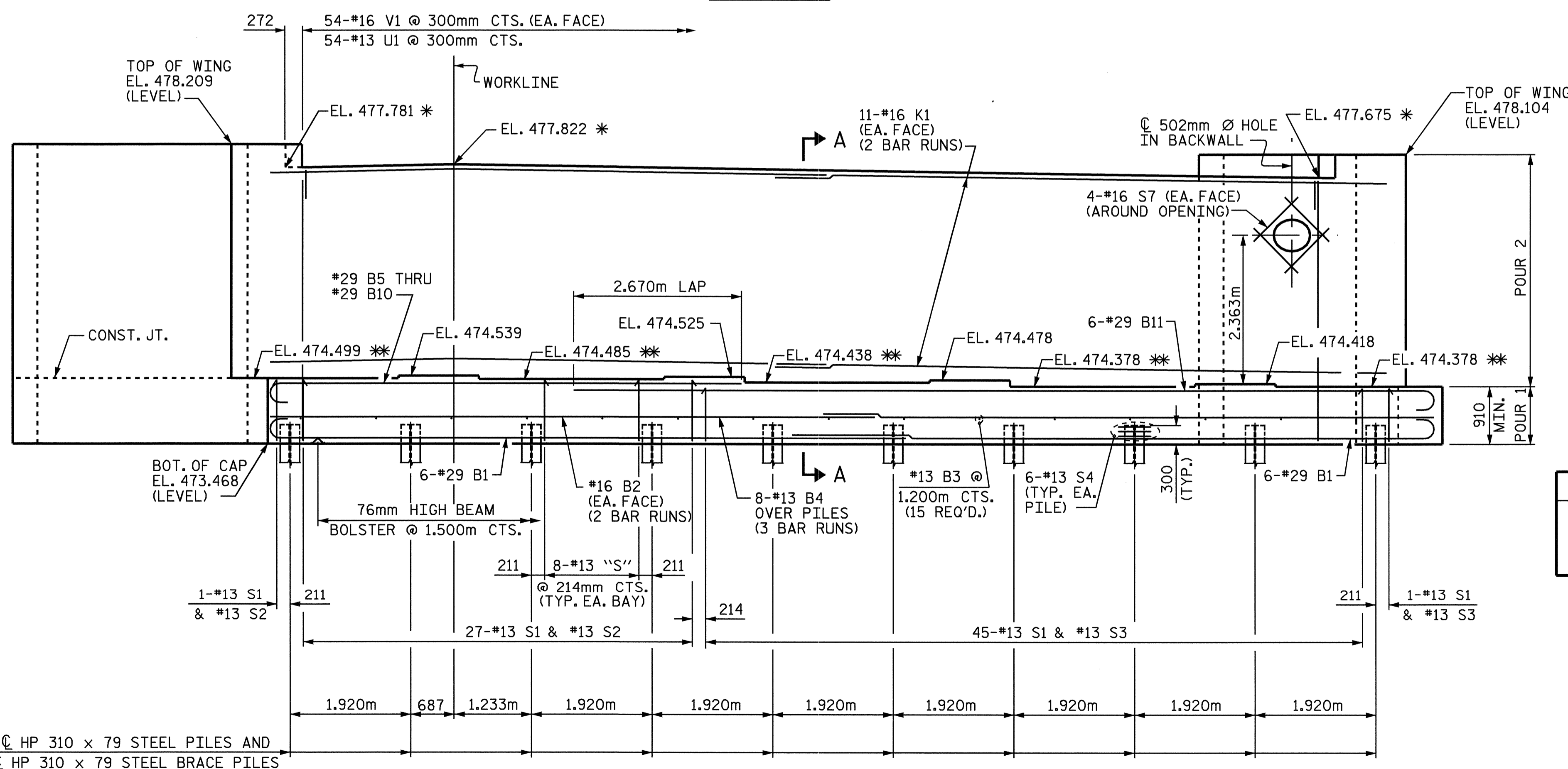
THE CONTRACTOR SHALL PROVIDE FOR INSTALLATION OF THE 102mm DIAMETER DRAIN PIPE THROUGH THE WING WALL AS REQUIRED FOR REINFORCED BRIDGE APPROACH FILLS, SEE THE ROADWAY PLANS. REINFORCING STEEL IN THE WING WALL MAY BE SHIFTED AS NECESSARY TO CLEAR THE DRAIN PIPE.

"K" BARS IN THE BACKWALL MAY BE CUT AND BENT AS NECESSARY TO AVOID INTERFERENCE WITH THE 502mm Ø OPENING.

"V" BARS AND "U" BARS IN THE BACKWALL MAY BE SHIFTED AS NECESSARY TO CLEAR THE 502mm Ø OPENING.

FOR DETAILS OF THE 502mm Ø OPENING, SEE "STRUCTURE DRAINAGE SYSTEM" SHEET.

CENTER UTILITY IN BLOCKOUT AND FILL ANNUAL SPACE AROUND UTILITY PIPE WITH JOINT FILLER IN ACCORDANCE WITH STANDARD SPECIFICATION ARTICLE 1028-1.



\* THESE ELEVATIONS ARE TAKEN AT FILL FACE.

\*\* FOR LOCATION OF ELEVATIONS BETWEEN BRIDGE SEAT BUILD-UPS, SEE SHEET 3 OF 3.

**SPLICE LENGTH CHART**

#29 B1 SPLICE = 1910mm
#16 B2 SPLICE = 920mm
#13 B4 SPLICE = 740mm
#16 K1 SPLICE = 920mm

PROJECT NO. R-0977A  
CHEROKEE COUNTY  
 STATION: 16+02.300-LC1B-

SHEET 1 OF 3

STATE OF NORTH CAROLINA  
 DEPARTMENT OF TRANSPORTATION  
 RALEIGH

SUBSTRUCTURE  
 END BENT 2



REVISIONS					
NO.	BY:	DATE:	NO.	BY:	DATE:
1			3		
2			4		

SHEET NO.	
S-39	
TOTAL SHEETS	230

DRAWN BY: A.S. CALLAWAY DATE: 8/23/04  
 CHECKED BY: A.K. PATEL DATE: 9/22/04

10-JAN-2005 10:22  
 W:\Squad\l\0977A\str\scallaway\R0977A\_sd.E2.01.dgn  
 lsutton

NOTE: PILE IN WINGS NOT SHOWN FOR CLARITY.

STR. #1