

## NOTES

THE COST OF THE BARRIER RAIL ON THE APPROACH SLAB SHALL BE INCLUDED IN THE LUMP SUM CONTRACT PRICE BID FOR BRIDGE APPROACH SLABS.

APPROACH SLAB SHALL NOT BE CONSTRUCTED PRIOR TO COMPLETION OF THE BRIDGE DECK.

FOR REINFORCED BRIDGE APPROACH FILL INCLUDING FABRIC, IMPERMEABLE GEOMEMBRANE, 102mm Ø DRAINAGE PIPE, #78M STONE, AND SELECT MATERIAL, SEE ROADWAY PLANS.

TEMPORARY DRAINAGE AND TEMPORARY BERM AND SLOPE DRAINS WILL BE PAID FOR UNDER THE LUMP SUM PRICE FOR BRIDGE APPROACH SLAB.

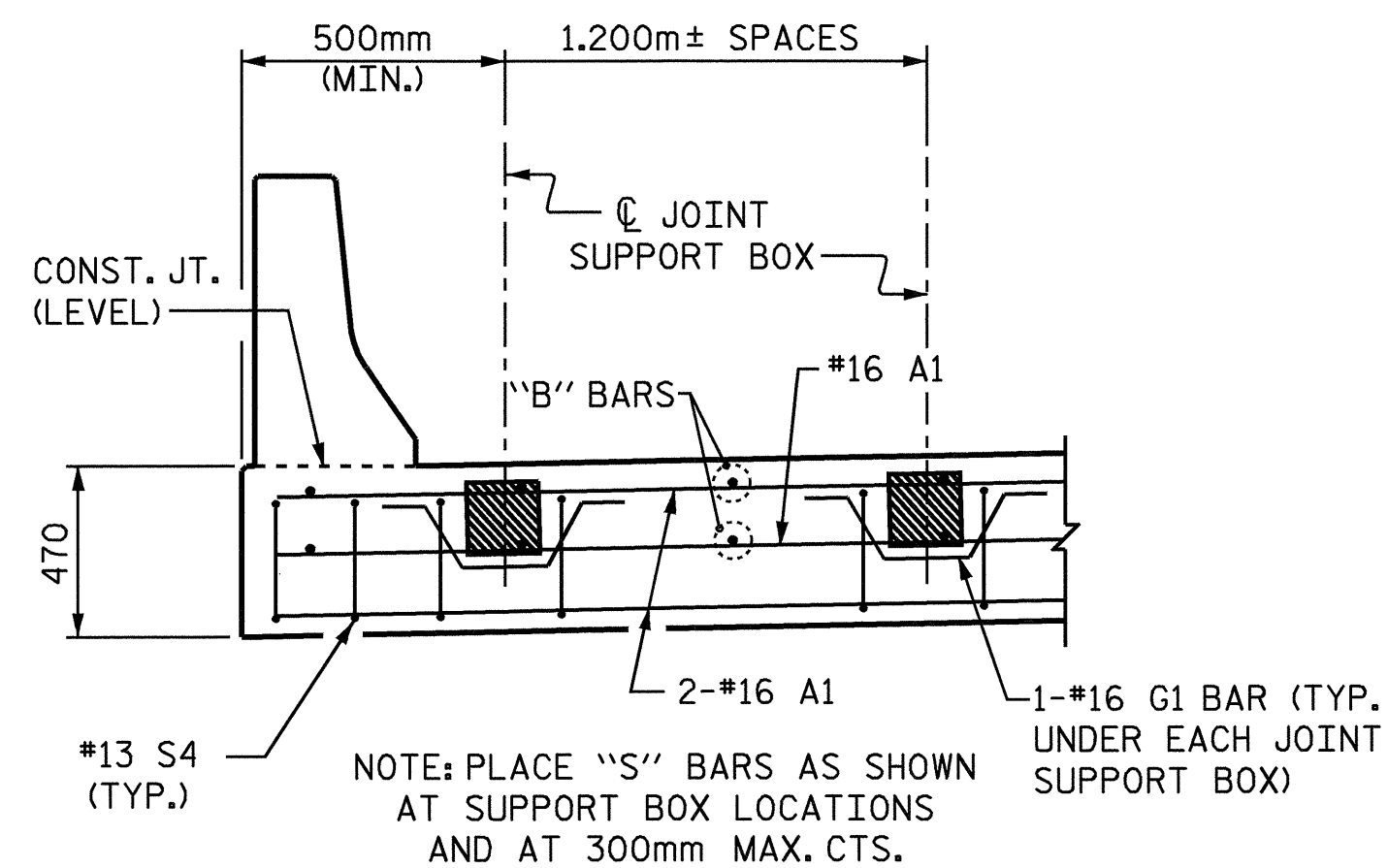
AREA BETWEEN THE WINGWALL AND APPROACH SLAB SHALL BE GRADED TO DRAIN THE WATER AWAY FROM THE FILL FACE OF THE BRIDGE.

THE 125mm CLASS A CONCRETE BASE COURSE SHALL BE FINISHED TO A SMOOTH SURFACE AND A LAYER OF 13.6 kg ROOFING FELT SHALL BE PLACED BETWEEN CONCRETE BASE AND THE APPROACH SLAB TO PREVENT BOND. THE CONCRETE BASE COURSE SHALL EXTEND 300mm BEYOND THE END OF THE APPROACH SLAB AND THE WIDTH SHALL BE THE SAME AS THAT OF THE APPROACH SLAB. THE APPROACH SLAB SHALL NOT BE CAST UNTIL THE CONCRETE BASE HAS REACHED AN AGE OF 3 CURING DAYS.

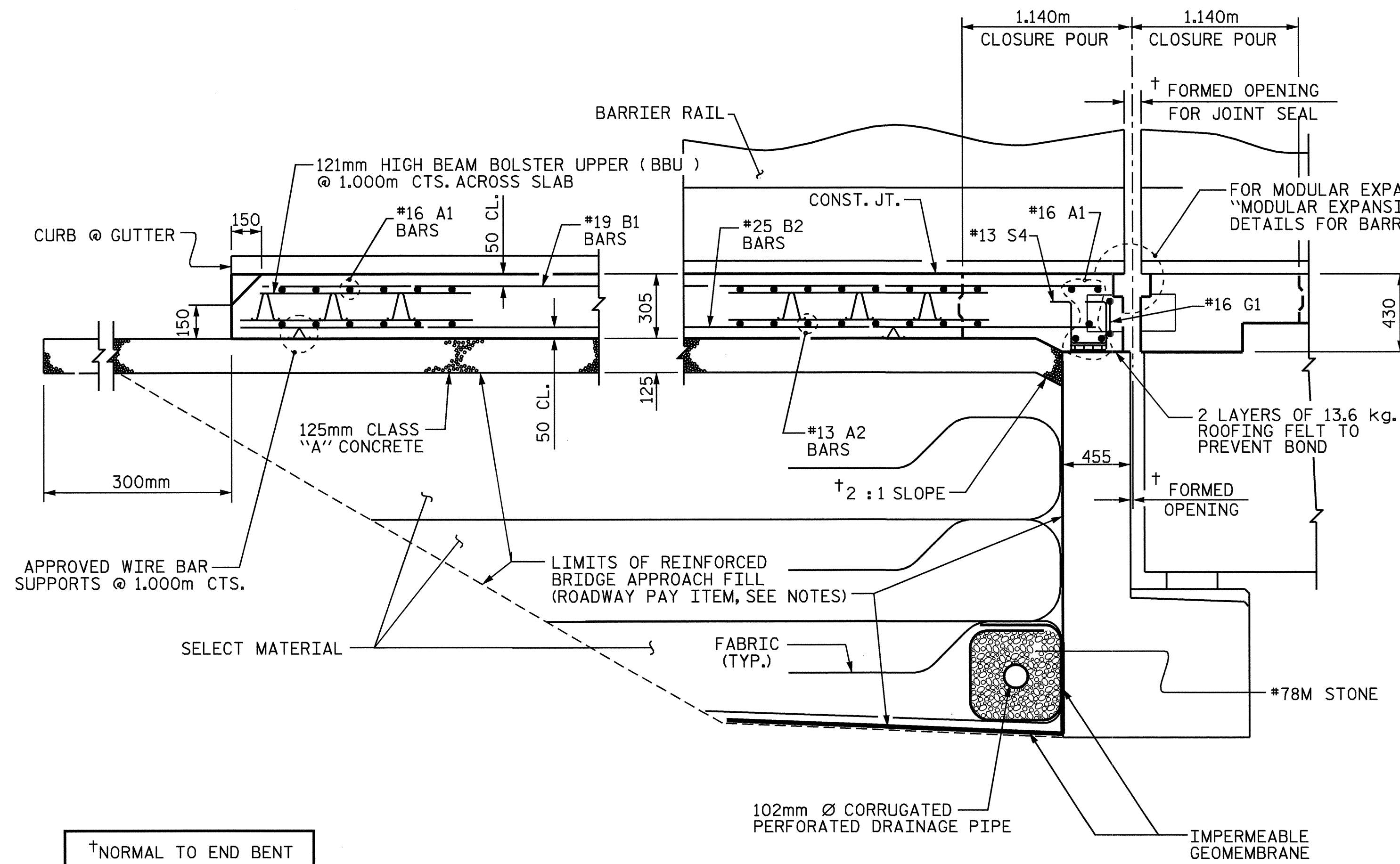
THE CONTRACTOR MAY USE 100mm TYPE B-25.0B ASPHALT CONCRETE BASE COURSE IN LIEU OF 125mm CLASS A CONCRETE. THE 100mm TYPE B-25.0B ASPHALT CONCRETE BASE SHALL EXTEND 300mm BEYOND THE END OF THE APPROACH SLAB AND THE WIDTH SHALL BE THE SAME AS THAT OF THE APPROACH SLAB.

THE #19 B1 & #25 B2 BARS MAY BE CUT AS DIRECTED BY THE ENGINEER TO CLEAR THE MODULAR JOINT SUPPORT BOXES.

SPECIAL SNOWPLOW PROTECTION IS REQUIRED. SEE SPECIAL PROVISION FOR MODULAR EXPANSION JOINT SEALS.



**PARTIAL SECTION APPROACH SLAB AT JOINT**



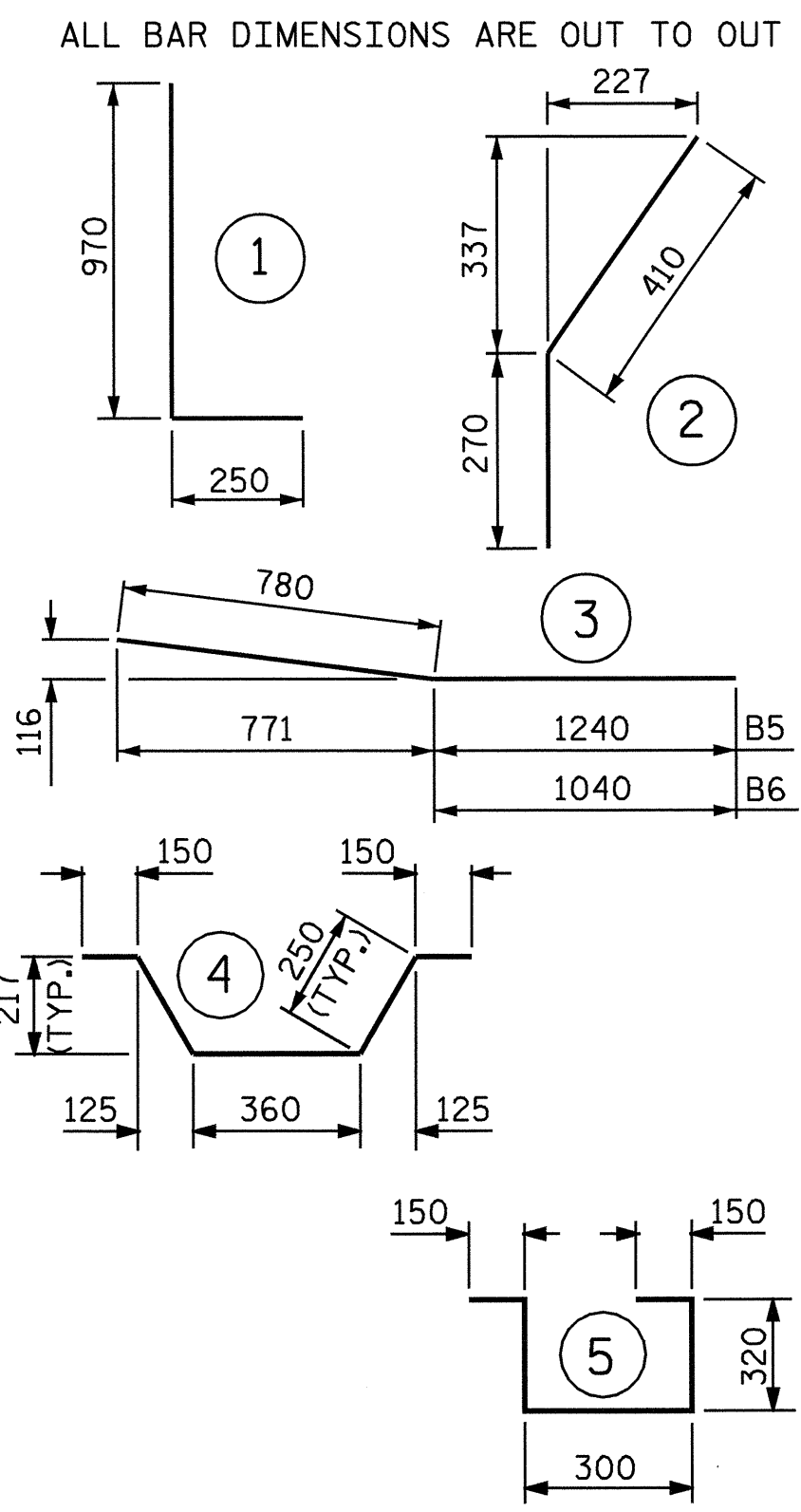
**SECTION THRU SLAB AT END BENT 1**

ASSEMBLED BY : A.S. CALLAWAY DATE : 9/14/04  
 CHECKED BY : P.C. BREWER DATE : 10/26/04  
 DRAWN BY : RWW 8/01  
 CHECKED BY : LES 8/01

ADDED 12/01  
 REV. 5/7/03R RWW/JTE

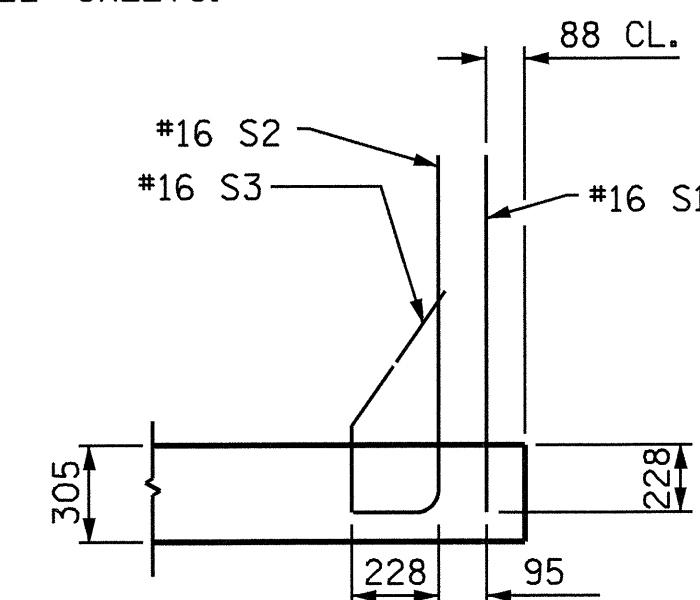
21-DEC-2004 07:00  
 W:\SquadL\0977A\str\scallaway\0977A.sd\_AS\_01.dgn  
 lsutton

## BAR TYPES

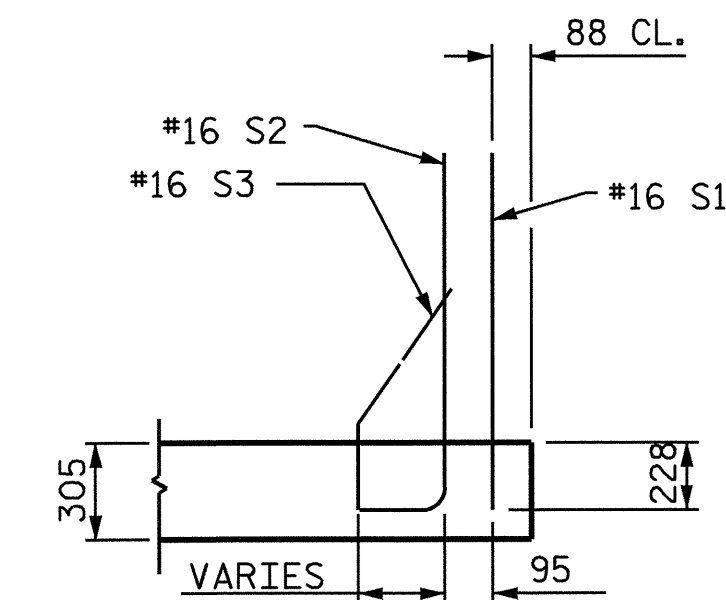


## BILL OF MATERIAL

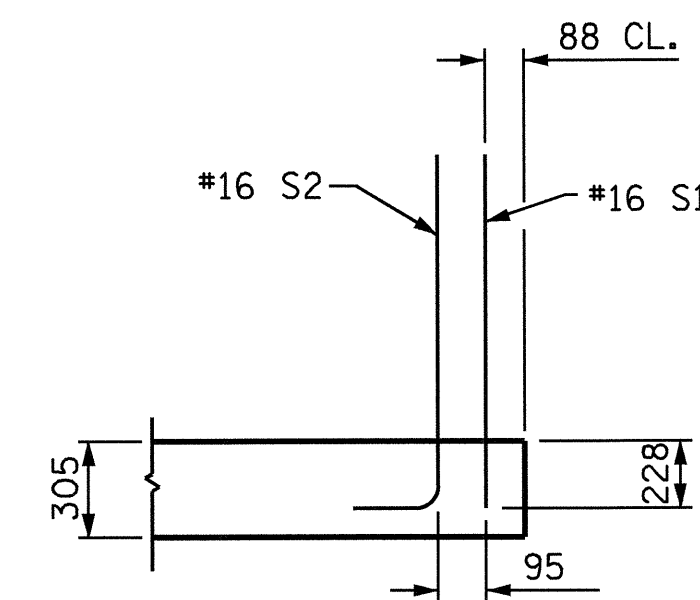
APPROACH SLAB-END BENT 1					
BAR	NO.	SIZE	TYPE	LENGTH	WEIGHT
*A1	53	#16	STR	16200	1333
A2	96	#13	STR	8460	807
*B1	94	#19	STR	7320	1538
B2	94	#25	STR	7440	2779
*B3	7	#16	STR	3600	39
*B4	7	#16	STR	3440	37
*B5	1	#16	3	2020	3
*B6	1	#16	3	1820	3
*G1	13	#16	4	1160	23
*S1	50	#16	STR	980	76
*S2	50	#16	1	1220	95
*S3	20	#16	2	680	21
*S4	54	#13	5	1240	67
REINFORCING STEEL				3586	kg.
*EPOXY COATED REINFORCING STEEL				3235	kg.
CLASS AA CONCRETE BREAKDOWN					
POUR 1 SLAB & CURBS				27.3	C. M.
POUR 2 RAIL				1.6	C. M.
CLOSURE POUR				7.4	C. M.
CLASS AA CONCRETE				36.3	C. M.



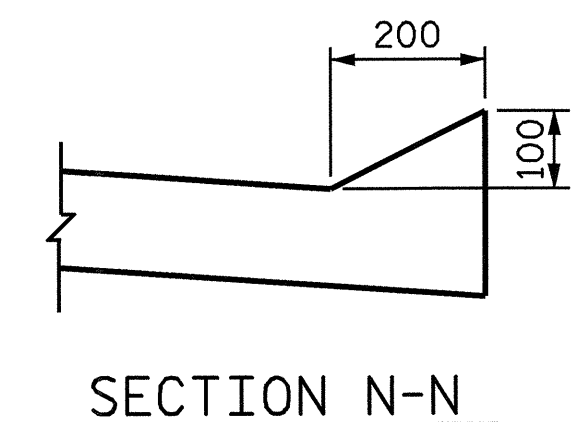
**SECTION K-K**



**SECTION L-L**



**SECTION M-M**



**SECTION N-N**

PROJECT NO. R-0977A  
CHEROKEE COUNTY  
 STATION: 16+02.300-LC1B-

SHEET 3 OF 7

STATE OF NORTH CAROLINA  
 DEPARTMENT OF TRANSPORTATION  
 RALEIGH  
 STANDARD  
 BRIDGE APPROACH SLAB  
 FOR FLEXIBLE PAVEMENT  
 WITH BARRIER RAIL

(AT END BENT 1)

REVISIONS						SHEET NO.
NO.	BY:	DATE:	NO.	BY:	DATE:	S-45
1			3			TOTAL SHEETS
2			4			230

STR. #1      STD. NO. BAS55M

