

**NOTES**

STIRRUPS IN CAP MAY BE SHIFTED AS NECESSARY TO CLEAR ANCHOR BOLTS.

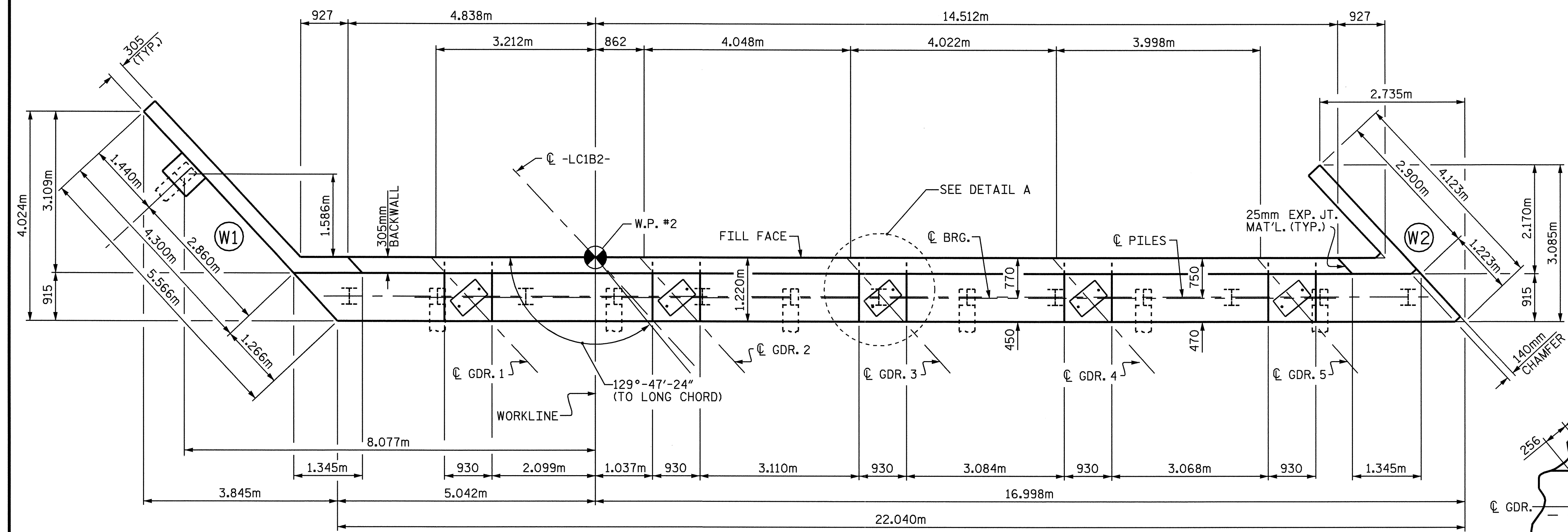
FOR EPOXY PROTECTIVE COATING, SEE SPECIAL PROVISIONS.

BACKWALL SHALL BE PLACED BEFORE APPLYING THE EPOXY PROTECTIVE COATING.

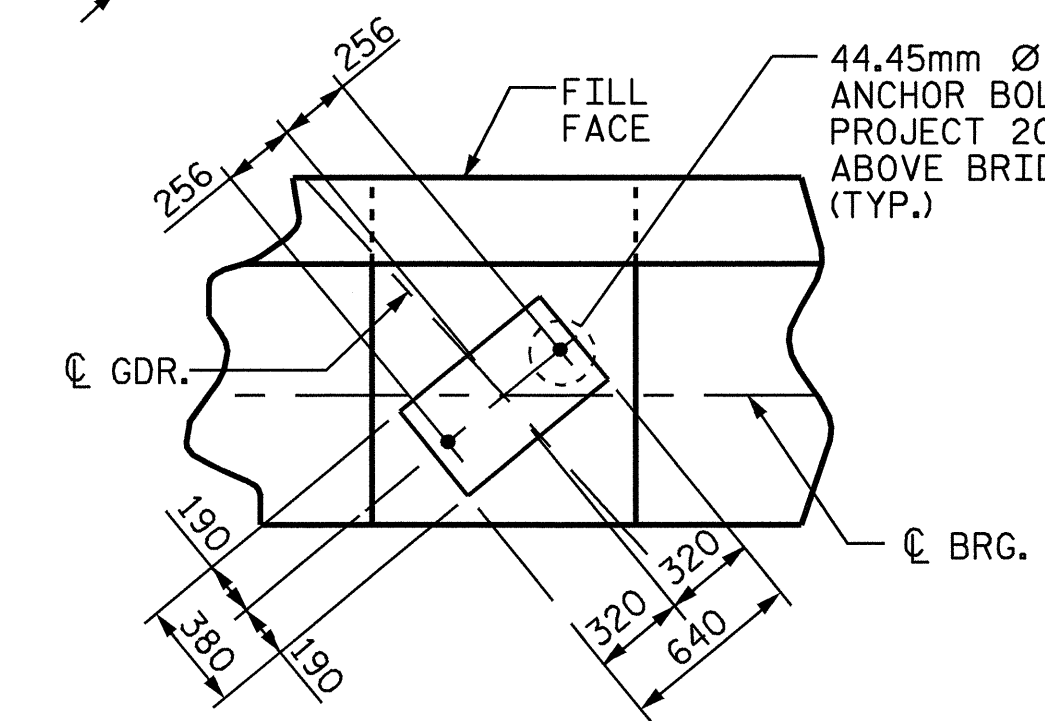
THE TOP SURFACE AREAS OF THE END BENT CAPS SHALL BE CURED IN ACCORDANCE WITH THE STANDARD SPECIFICATIONS EXCEPT THE MEMBRANE CURING COMPOUND METHOD SHALL NOT BE USED.

THE TOP SURFACE OF THE CAP EXCEPT THE BRIDGE SEAT BUILDUPS SHALL BE SLOPED TRANSVERSELY FROM THE FILL FACE TO THE BACK FACE AT THE RATE OF 2 %.

THE CONTRACTOR SHALL PROVIDE FOR INSTALLATION OF THE 102mm DIAMETER DRAIN PIPE THROUGH THE WING WALL AS REQUIRED FOR REINFORCED BRIDGE APPROACH FILLS, SEE THE ROADWAY PLANS. REINFORCING STEEL IN THE WING WALL MAY BE SHIFTED AS NECESSARY TO CLEAR THE DRAIN PIPE.



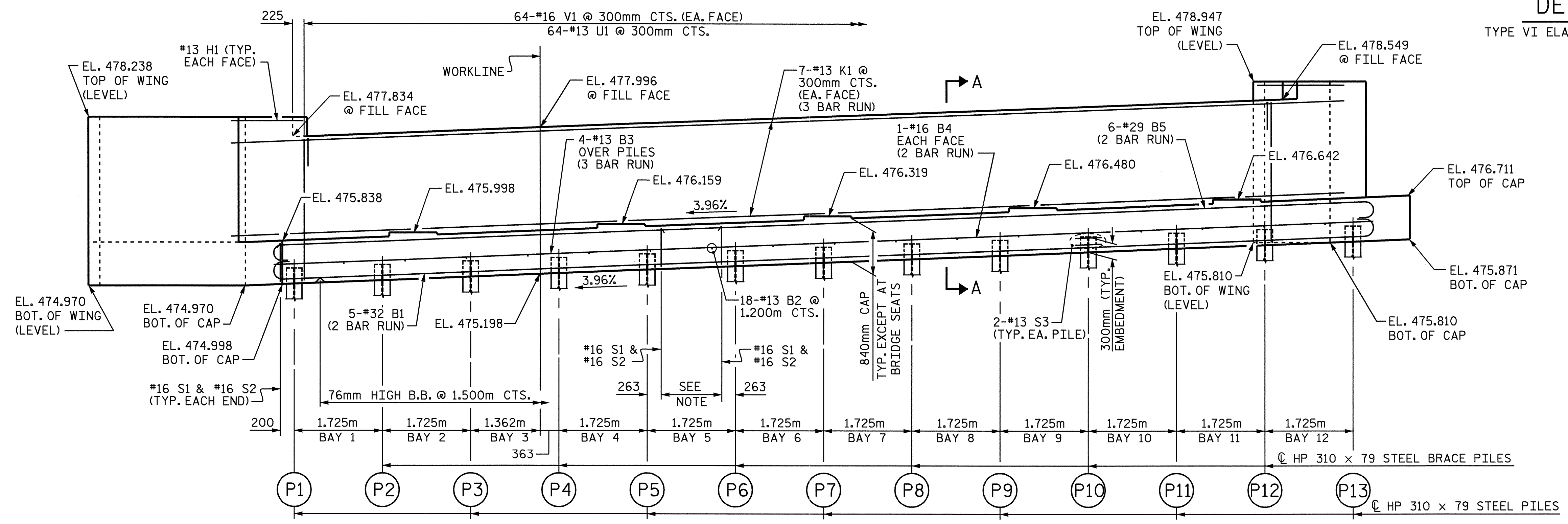
**PLAN**



**DETAIL A**

TYPE VI ELASTOMERIC BRG. (TYP.)

TOP OF PILE ELEVATIONS	
P1	475.307
P2	475.376
P3	475.444
P4	475.512
P5	475.581
P6	475.649
P7	475.717
P8	475.786
P9	475.854
P10	475.922
P11	475.991
P12	476.059
P13	476.127
W1	475.270



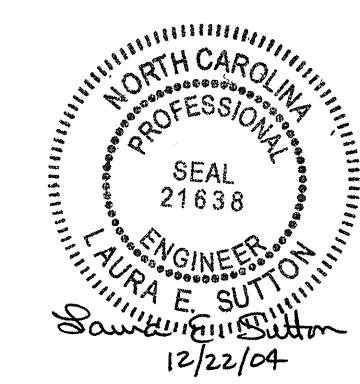
**ELEVATION**

SPLICE CHART	
#32 B1 SPLICE	= 2420mm
#13 B3 SPLICE	= 740mm
#16 B4 SPLICE	= 920mm
#29 B5 SPLICE	= 2670mm
#13 K1 SPLICE	= 740mm

NOTE: 5-#16 S1 & #16 S2 @ 300mm CTS. BAYS 1, 3, 5-8, 10 & 12.  
9-#16 S1 & #16 S2 @ 150mm CTS. BAYS 2, 4, 9 & 11.

PROJECT NO. R-0977A  
CHEROKEE COUNTY  
 STATION: 18+31.299-LC1B2-

SHEET 1 OF 3



STATE OF NORTH CAROLINA DEPARTMENT OF TRANSPORTATION RALEIGH					SHEET NO.	
SUBSTRUCTURE END BENT 2					S-69	
REVISIONS					TOTAL SHEETS	
NO.	BY:	DATE:	NO.	BY:	DATE:	230
1			3			
2			4			

DRAWN BY: A.S. CALLAWAY DATE: 6/21/04  
 CHECKED BY: J.P. ADAMS DATE: 9/23/04