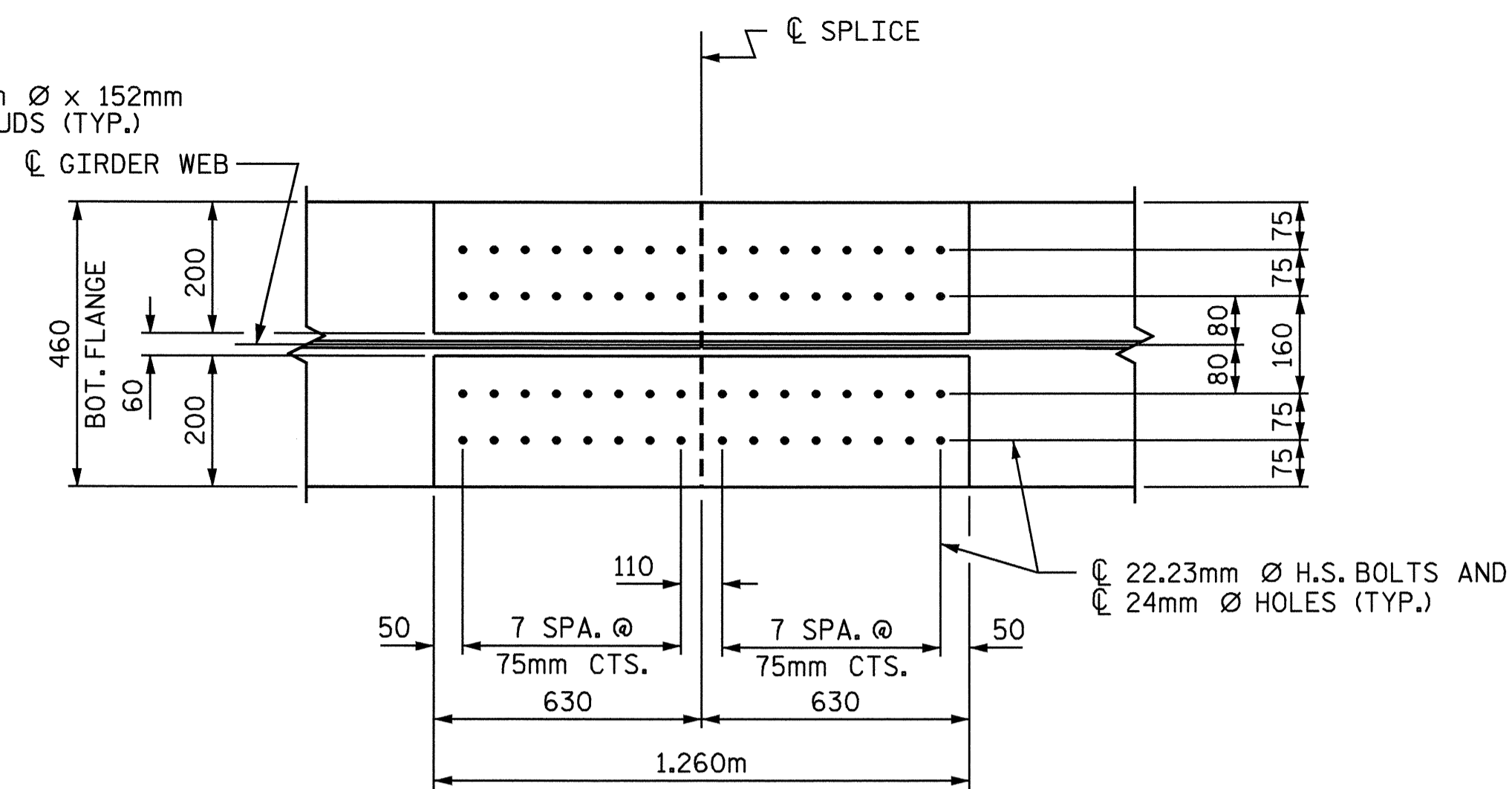
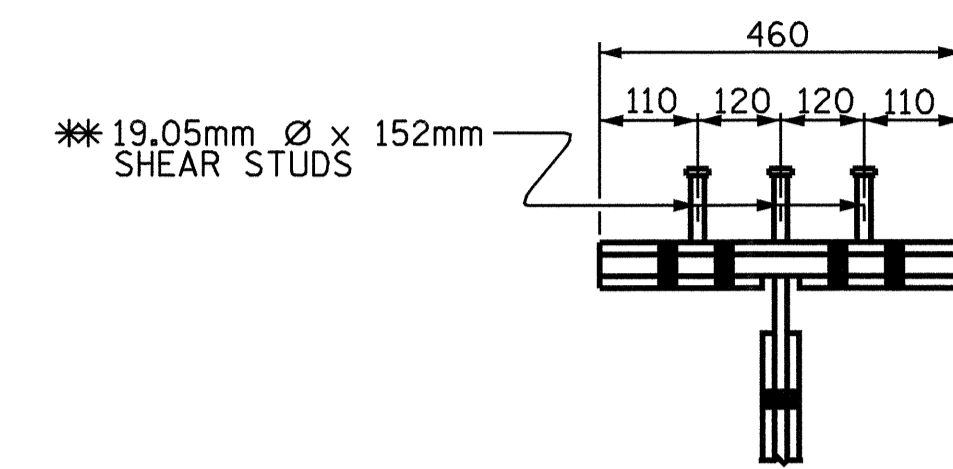


PLAN (TOP OF TOP FLANGE)

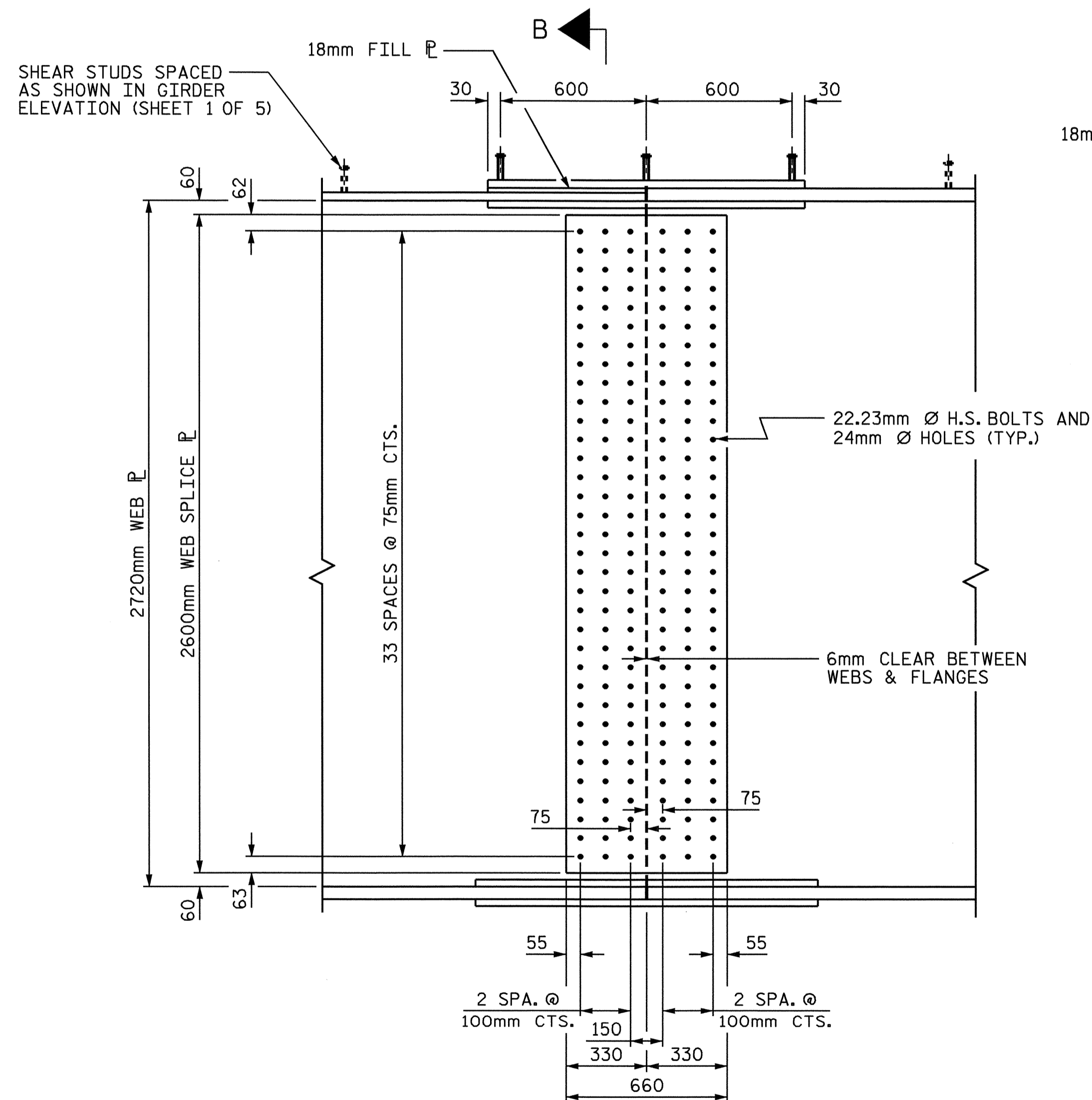


PLAN (TOP OF BOTTOM FLANGE)

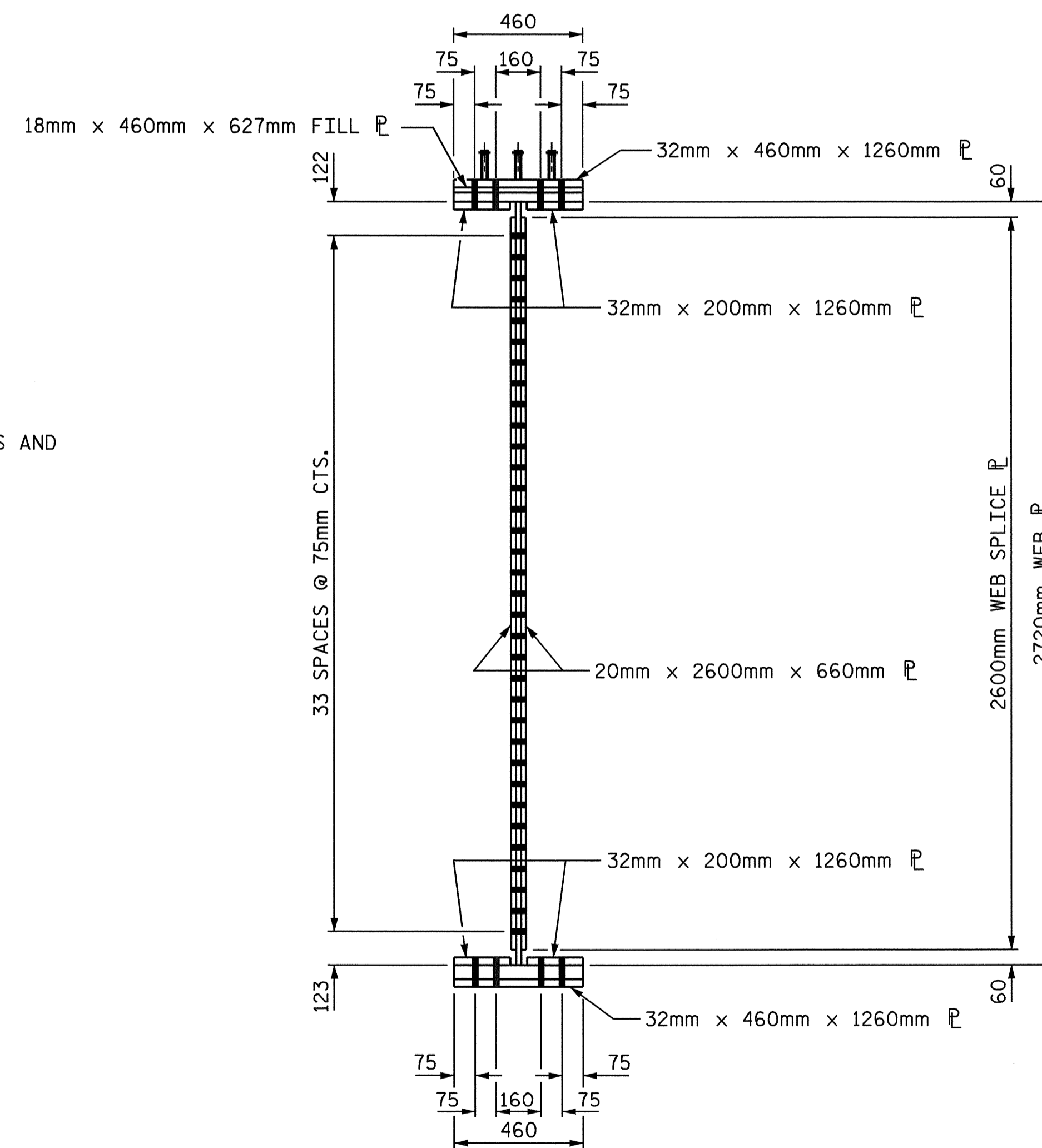


SHEAR STUD DETAIL FOR TOP FLANGE SPLICE PLATE

**NOTE: SHEAR STUDS ARE TO BE SHOP WELDED ON TOP OF PLATE BEFORE FIELD ASSEMBLY



ELEVATION



SECTION B-B

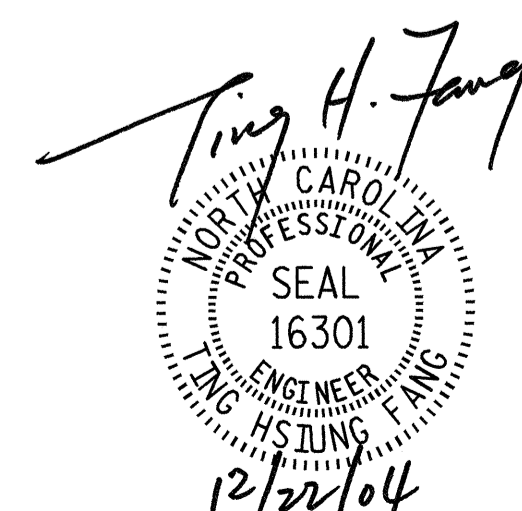
DESCRIPTION	SIZE	NO. REQ'D. FOR ONE FIELD SPLICE	TOTAL REQ'D. FOR BFS2
WEB SPLICE PLATE	20 x 660 x 2600	2	16
OUTER SPLICE PLATE TOP FLANGE W/SHEAR STUDS	32 x 460 x 1260	1	8
INNER SPLICE PLATE TOP FLANGE	32 x 200 x 1260	2	16
FILL PLATE TOP FLANGE	18 x 460 x 627	1	8
INNER SPLICE PLATE BOTTOM FLANGE	32 x 200 x 1260	2	16
OUTER SPLICE PLATE BOTTOM FLANGE	32 x 460 x 1260	1	8

NOTE: 24mm Ø HOLES FOR 22.23mm Ø BOLTS.

BOLTED FIELD SPLICE DETAILS (TYPE BFS2)

DRAWN BY : T.H. FANG/MAA DATE : 6-04
 CHECKED BY : B.N. BARODAWALA DATE : 8-10-04

20-DEC-2004 16:26
 W:\SquadL\R0977A\str3\mallen\R0977A.sd.SS.03.dgn
 tsutfon



PROJECT NO. R-0977A
 CHEROKEE COUNTY
 STATION: 24+60.500 -LC1B-

SHEET 6 OF 6

STATE OF NORTH CAROLINA
 DEPARTMENT OF TRANSPORTATION
 RALEIGH

SUPERSTRUCTURE
 STRUCTURAL STEEL
 DETAILS
 (TYPE BFS2)

REVISIONS						SHEET NO.	
NO.	BY:	DATE:	NO.	BY:	DATE:	S-93	
1			3			TOTAL SHEETS 230	
2			4				

STR. #3