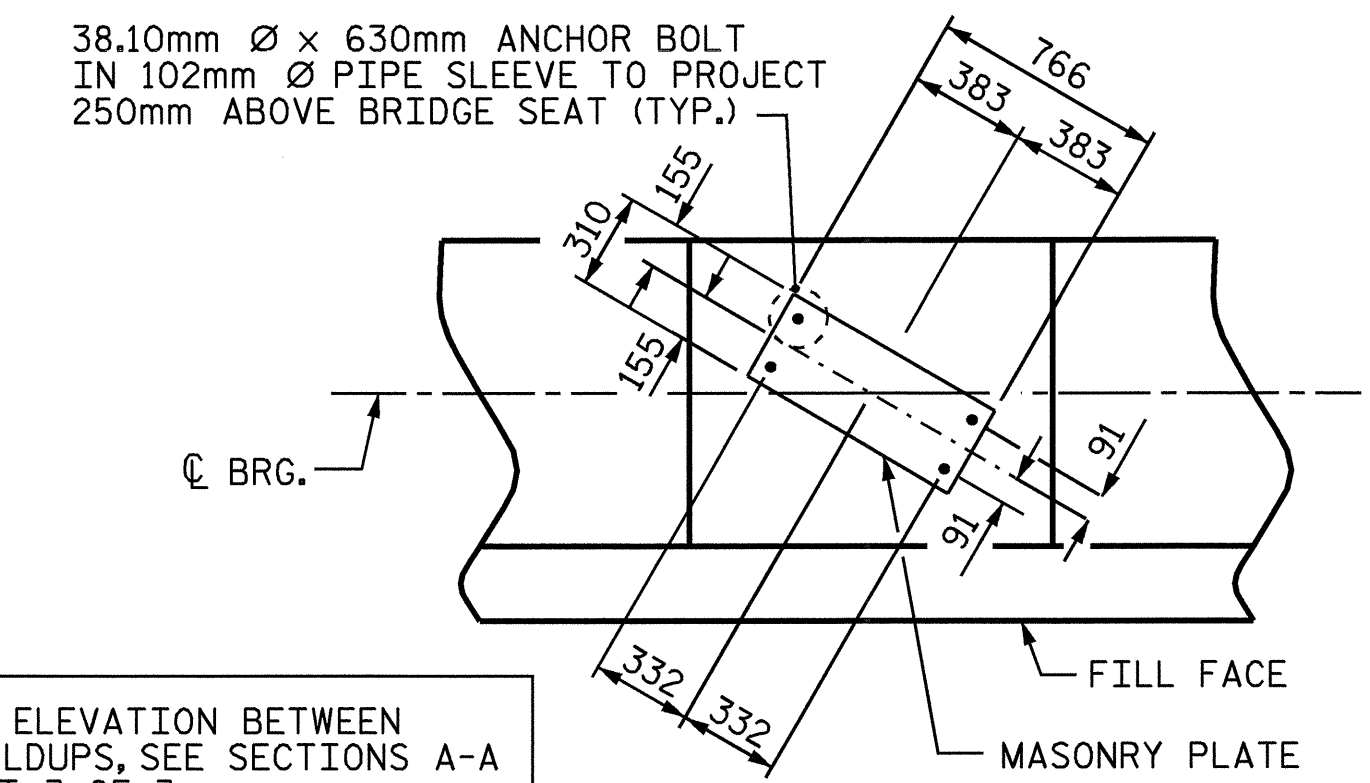


PLAN

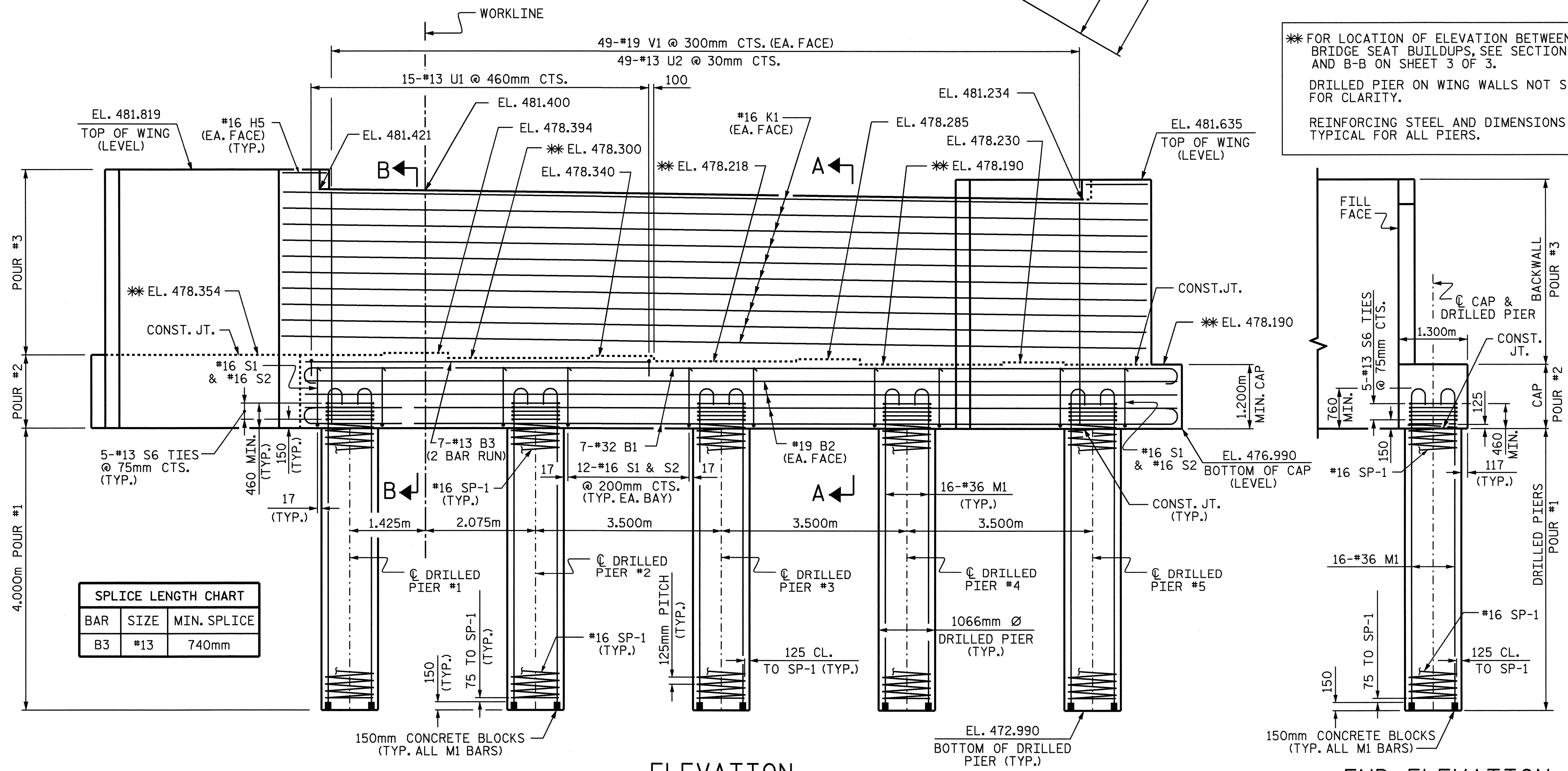
NOTES

STIRRUPS IN CAP MAY BE SHIFTED AS NECESSARY TO CLEAR ANCHOR BOLTS.
 FOR EPOXY PROTECTIVE COATING, SEE SPECIAL PROVISIONS.
 BACKWALL SHALL BE PLACED BEFORE APPLYING THE EPOXY PROTECTIVE COATING.
 THE TOP SURFACE AREAS OF THE END BENT CAPS SHALL BE CURED IN ACCORDANCE WITH THE STANDARD SPECIFICATIONS EXCEPT THAT THE MEMBRANE CURING COMPOUND METHOD SHALL NOT BE USED.
 THE TOP SURFACE OF THE CAP EXCEPT THE BRIDGE SEAT BUILDUPS SHALL BE SLOPED TRANSVERSELY FROM THE FILL FACE TO THE BACK FACE AT THE RATE OF 2%.
 HOOKS ON M1 BARS MAY BE TURNED AS NECESSARY FOR PLACING REINFORCING STEEL.
 THE CONTRACTOR'S ATTENTION IS CALLED TO THE FACT THAT THE LONGITUDINAL REINFORCEMENT FOR THE DRILLED PIERS IS DETAILED WITH ONE METER OF EXTRA LENGTH.
 ALL STEEL IN THE DRILLED PIERS IS INCLUDED IN THE PAY ITEMS FOR "REINFORCING STEEL" AND "SPIRAL COLUMN REINFORCING STEEL".
 FOR DRILLED PIERS, SEE SPECIAL PROVISIONS.
 FOR PIPE INSERT DETAILS, SEE "PIN ROCKER BEARING DETAILS" SHEETS.



DETAIL A

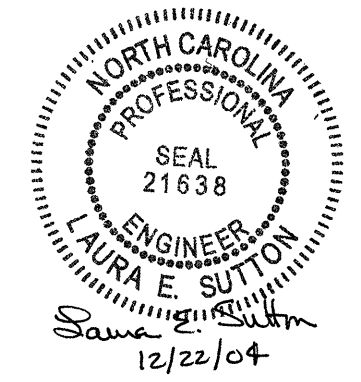
* FOR LOCATION OF ELEVATION BETWEEN BRIDGE SEAT BUILDUPS, SEE SECTIONS A-A AND B-B ON SHEET 3 OF 3.
 DRILLED PIER ON WING WALLS NOT SHOWN FOR CLARITY.
 REINFORCING STEEL AND DIMENSIONS ARE TYPICAL FOR ALL PIERS.



ELEVATION

END ELEVATION

SPLICE LENGTH CHART		
BAR	SIZE	MIN. SPLICE
B3	#13	740mm



PROJECT NO. R-0977A
CHEROKEE COUNTY
 STATION: 24+60.500-LC1B-

SHEET 1 OF 3

STATE OF NORTH CAROLINA
 DEPARTMENT OF TRANSPORTATION
 RALEIGH

SUBSTRUCTURE
 END BENT #1

REVISIONS						SHEET NO.
NO.	BY:	DATE:	NO.	BY:	DATE:	
1			3			S-109
2			4			

TOTAL SHEETS: 230

DRAWN BY: B.N.BARODAWALA DATE: 10-27-04
 CHECKED BY: J.D.HAWK DATE: 11-17-04