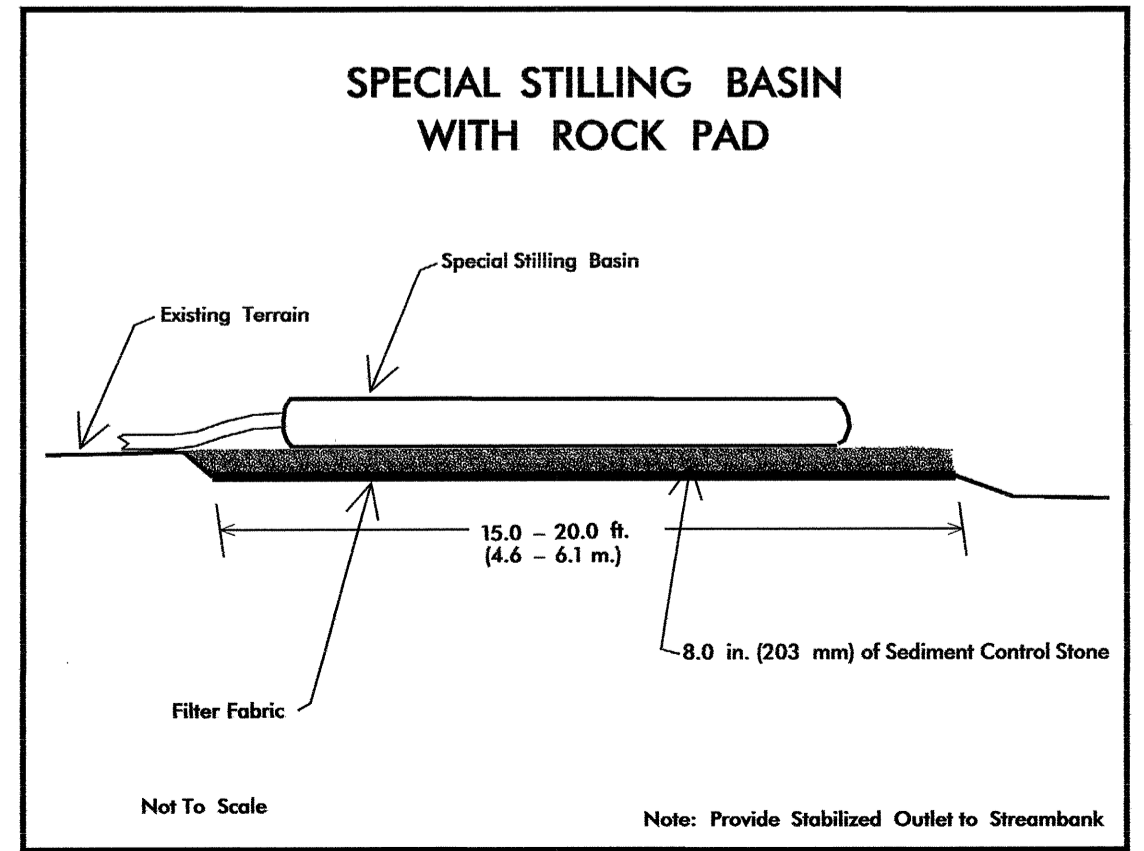
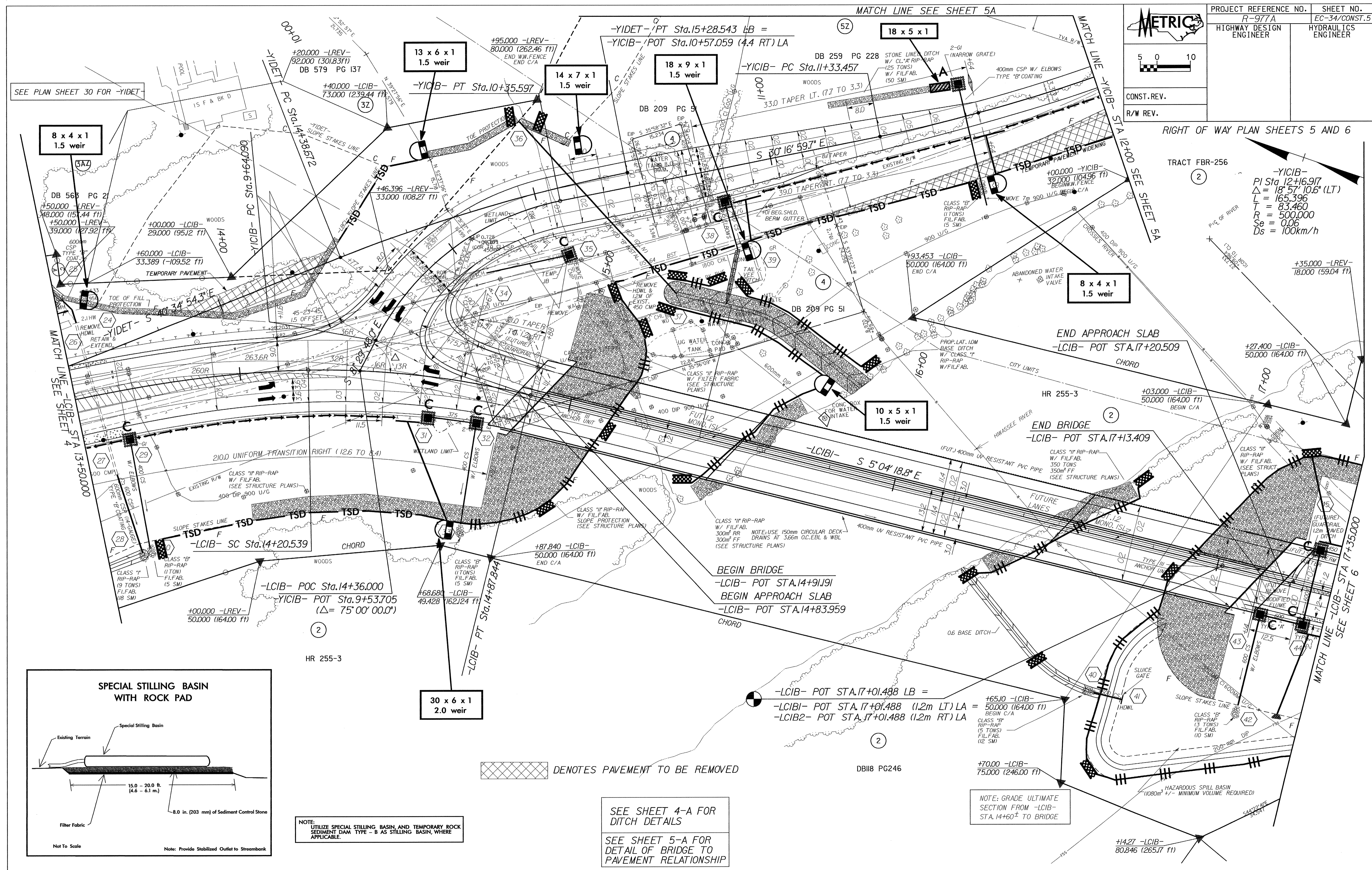


PROJECT REFERENCE NO.	SHEET NO.
R-977A	EC-34/CONST.5
HIGHWAY DESIGN ENGINEER	HYDRAULICS ENGINEER

RIGHT OF WAY PLAN SHEETS 5 AND 6

TRACT FBR-256

-YICIB-
 PI Sta.12+16.917
 $\Delta = 18^{\circ} 57' 10.6''$ (LT)
 L = 165.396
 T = 83.460
 R = 500.000
 Se = 0.06
 Ds = 100km/h



NOTE: UTILIZE SPECIAL STILLING BASIN, AND TEMPORARY ROCK SEDIMENT DAM TYPE - B AS STILLING BASIN, WHERE APPLICABLE.

DENOTES PAVEMENT TO BE REMOVED

SEE SHEET 4-A FOR DITCH DETAILS

SEE SHEET 5-A FOR DETAIL OF BRIDGE TO PAVEMENT RELATIONSHIP

NOTE: GRADE ULTIMATE SECTION FROM -LCIB- STA.14+60± TO BRIDGE

HAZARDOUS SPILL BASIN (1080m³ +/- MINIMUM VOLUME REQUIRED)