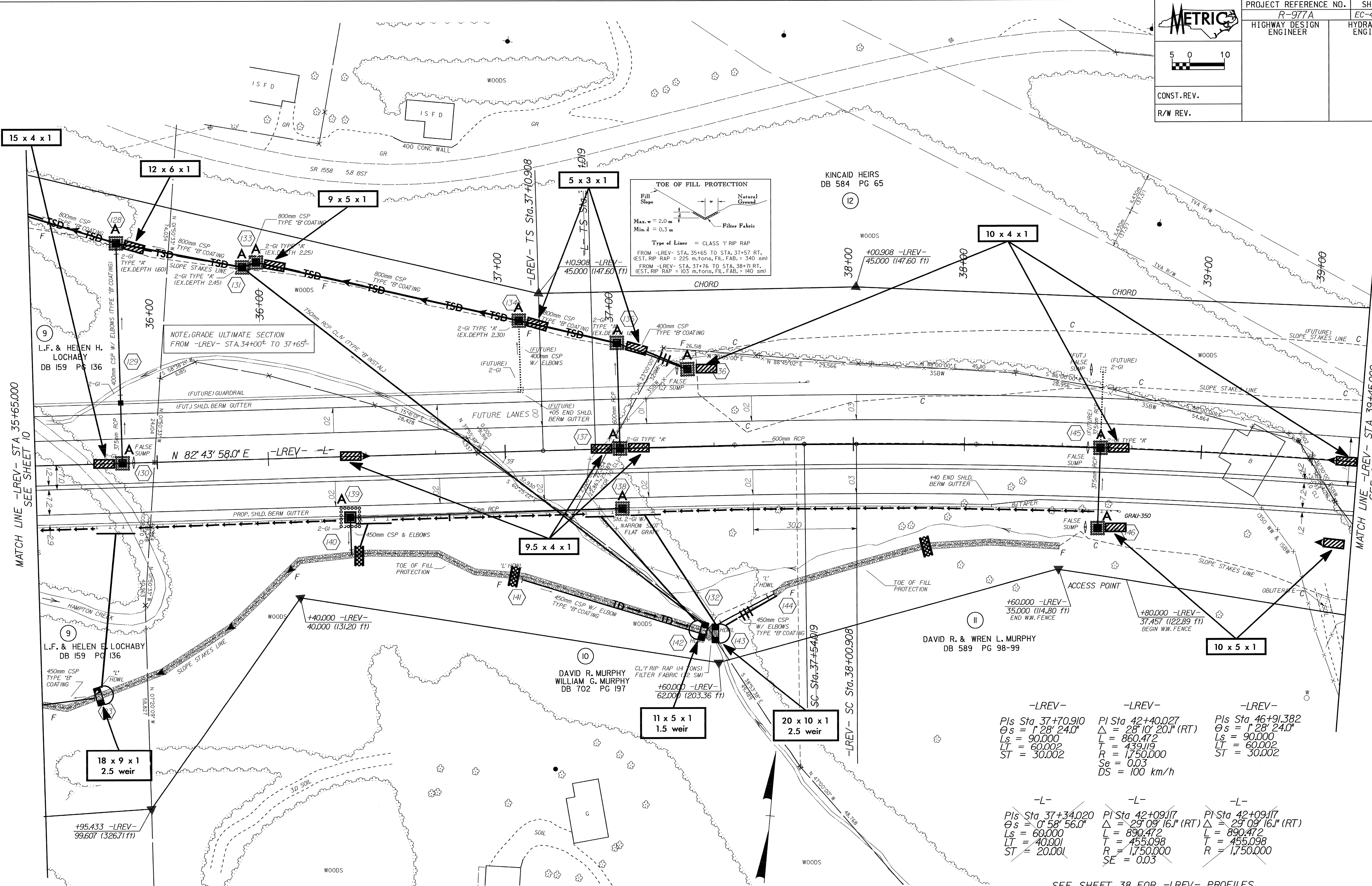


PROJECT REFERENCE NO.	SHEET NO.
R-977A	EC-41/CONST. II
HIGHWAY DESIGN ENGINEER	HYDRAULICS ENGINEER
CONST. REV.	
R/W REV.	



-LREV-	-LREV-	-LREV-
PIs Sta 37+70.910	PI Sta 42+40.027	PIs Sta 46+91.382
$\theta s = 1^{\circ} 28' 24.0''$	$\Delta = 28^{\circ} 10' 20.1''$ (RT)	$\theta s = 1^{\circ} 28' 24.0''$
Ls = 90.000	L = 860.472	Ls = 90.000
LT = 60.002	T = 439.119	LT = 60.002
ST = 30.002	R = 1,750.000	ST = 30.002
	Se = 0.03	
	DS = 100 km/h	

-L-	-L-	-L-
PIs Sta 37+34.020	PI Sta 42+09.117	PI Sta 42+09.117
$\theta s = 0^{\circ} 58' 56.0''$	$\Delta = 29^{\circ} 09' 16.1''$ (RT)	$\Delta = 29^{\circ} 09' 16.1''$ (RT)
Ls = 60.000	L = 890.472	L = 890.472
LT = 40.001	T = 455.098	T = 455.098
ST = 20.001	R = 1,750.000	R = 1,750.000
	SE = 0.03	

SEE SHEET 38 FOR -LREV- PROFILES  
SEE PROFILES FOR DITCH GRADES