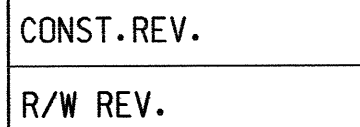
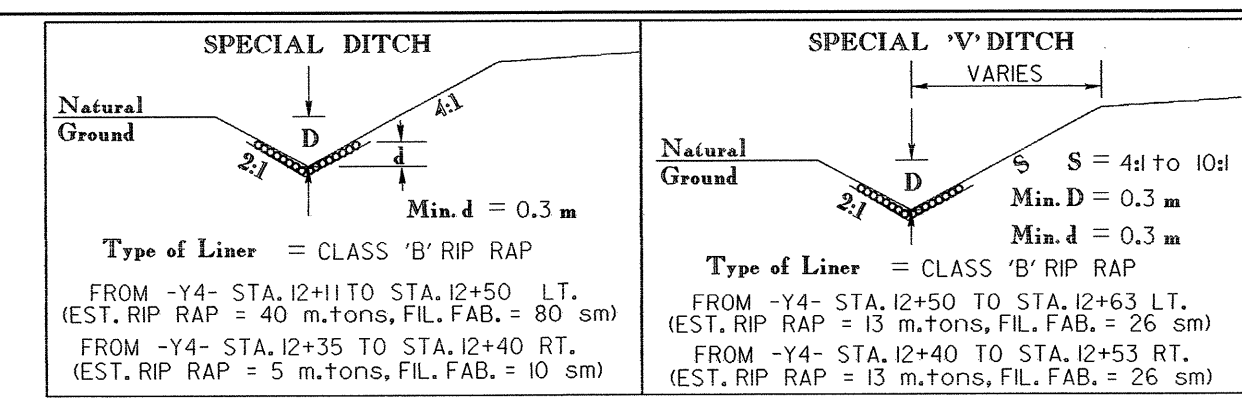


PROJECT REFERENCE NO.	SHEET NO.
R-977A	EC-44/CONST.14
HIGHWAY DESIGN ENGINEER	HYDRAULICS ENGINEER

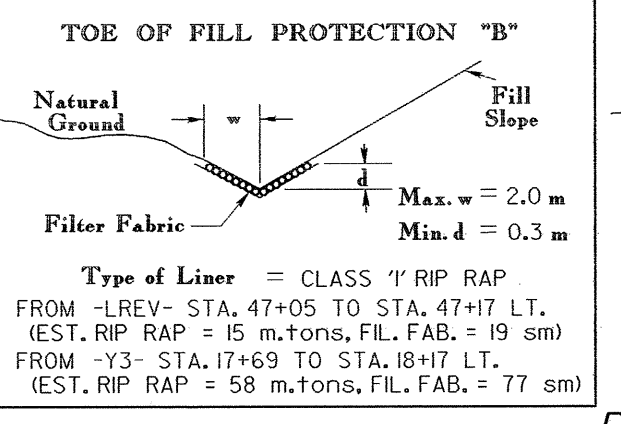
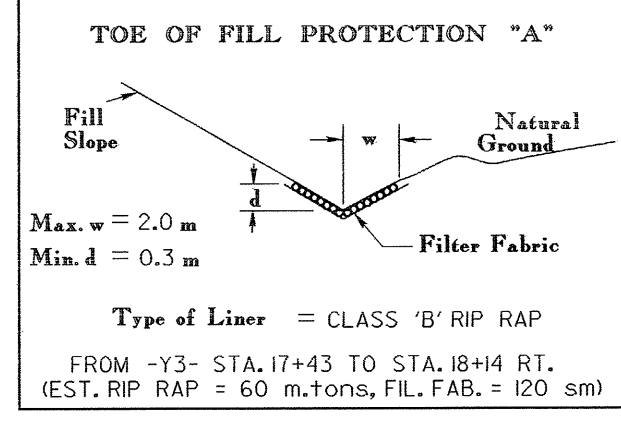
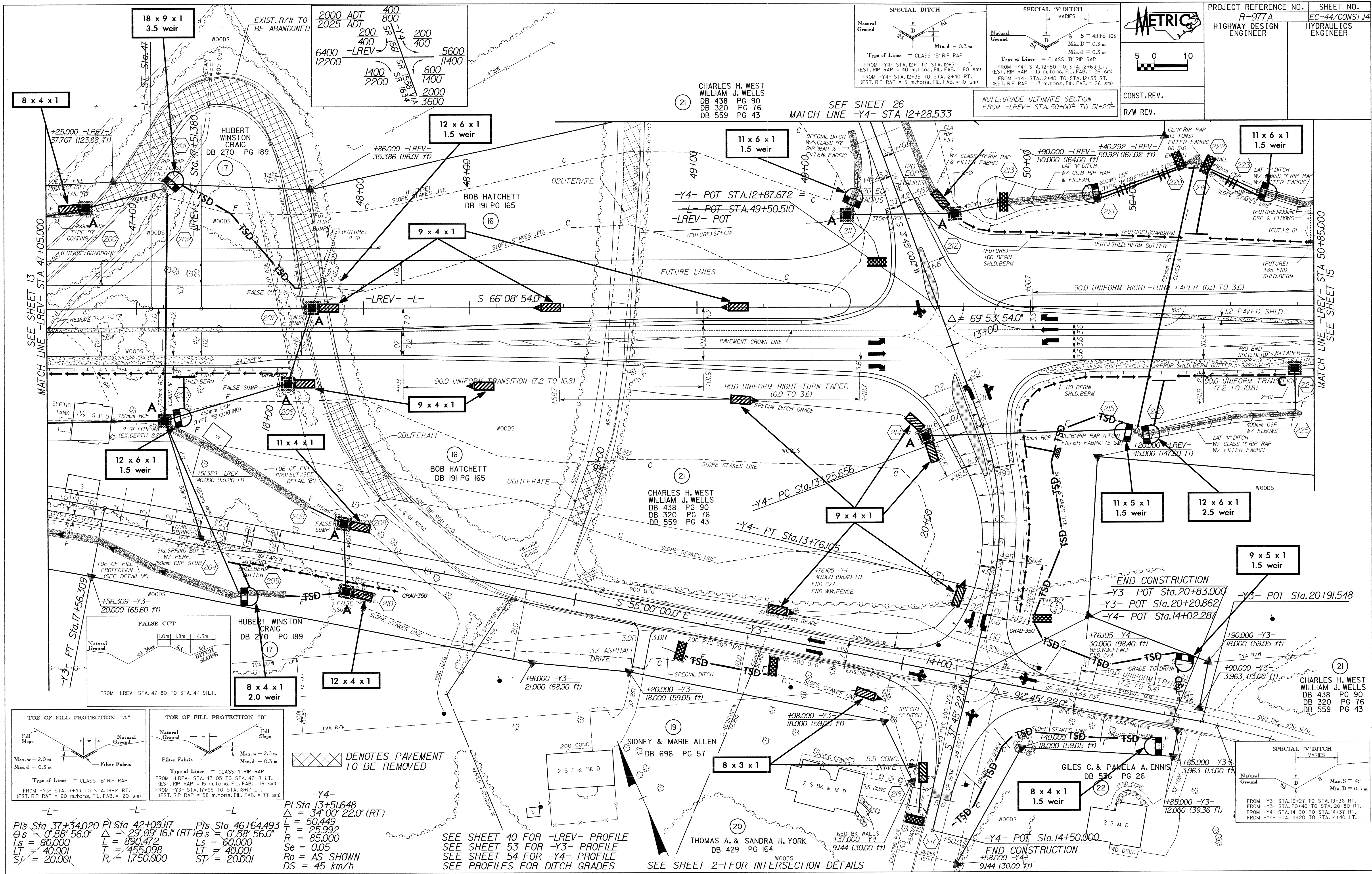


CONST. REV.
R/W REV.

CHARLES H. WEST
WILLIAM J. WELLS
DB 438 PG 90
DB 320 PG 76
DB 559 PG 43

SEE SHEET 26
MATCH LINE -Y4- STA 12+28.533

NOTE: GRADE ULTIMATE SECTION
FROM -LREV- STA. 50+00.00 TO 51+20.00



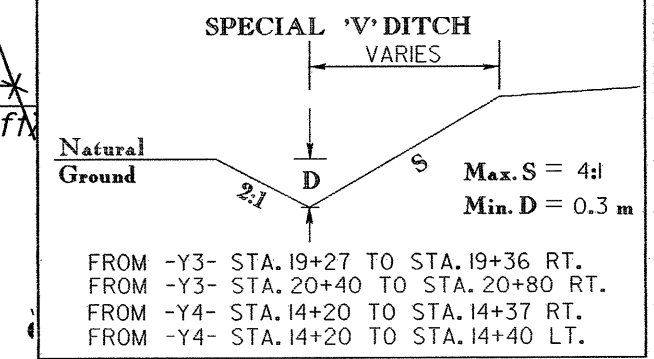
DENOTES PAVEMENT TO BE REMOVED

-L- PIs Sta. 37+34.020 P Sta. 42+09.117 PIs Sta. 46+64.493
 $\theta_s = 0^\circ 58' 56.0"$ $\Delta = 29^\circ 09' 16.1"$ (RT) $\theta_s = 0^\circ 58' 56.0"$
 $L_s = 60.000$ $L = 890.472$ $L_s = 60.000$
 $LT = 40.001$ $L = 455.098$ $LT = 40.001$
 $ST = 20.001$ $R = 1,750.000$ $ST = 20.001$

-Y4-
 P Sta. 13+51.648
 $\Delta = 34^\circ 00' 22.0"$ (RT)
 $L = 50.449$
 $R = 25.992$
 $R = 85.000$
 $Se = 0.05$
 $Ro = AS SHOWN$
 $DS = 45 \text{ km/h}$

SEE SHEET 40 FOR -LREV- PROFILE
 SEE SHEET 53 FOR -Y3- PROFILE
 SEE SHEET 54 FOR -Y4- PROFILE
 SEE PROFILES FOR DITCH GRADES

SEE SHEET 2-1 FOR INTERSECTION DETAILS



CHARLES H. WEST
WILLIAM J. WELLS
DB 438 PG 90
DB 320 PG 76
DB 559 PG 43