


| | | |
|------------------------------------------------------------------------------------|-------------------------|---------------------|
|  | PROJECT REFERENCE NO. | SHEET NO. |
| | R-977A | EC-48/CONST.18 |
| | HIGHWAY DESIGN ENGINEER | HYDRAULICS ENGINEER |
| | | |
| CONST. REV. | | |
| R/W REV. | | |



-LREV-
 Pls Sta 62+68.352
 $\theta_s = 2^\circ 56' 47.9''$
 $L_s = 90.000$
 $LT = 60.008$
 $ST = 30.008$

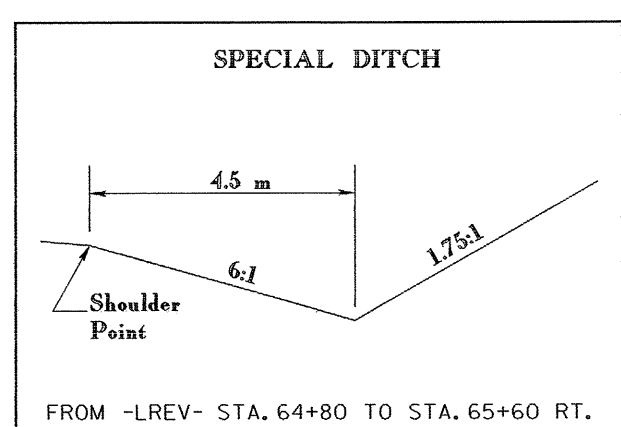
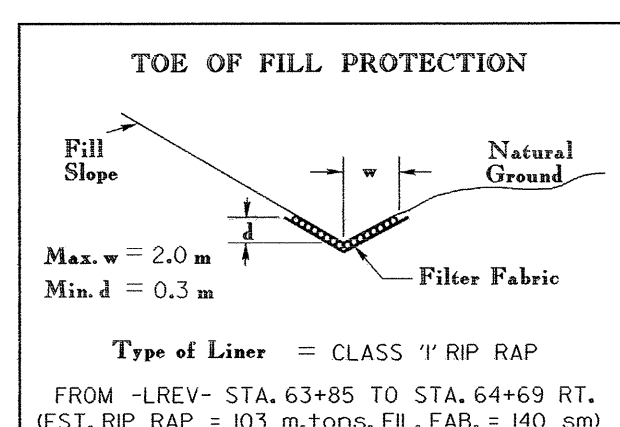
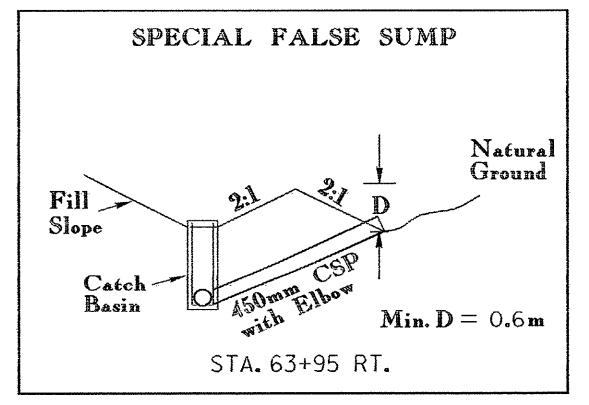
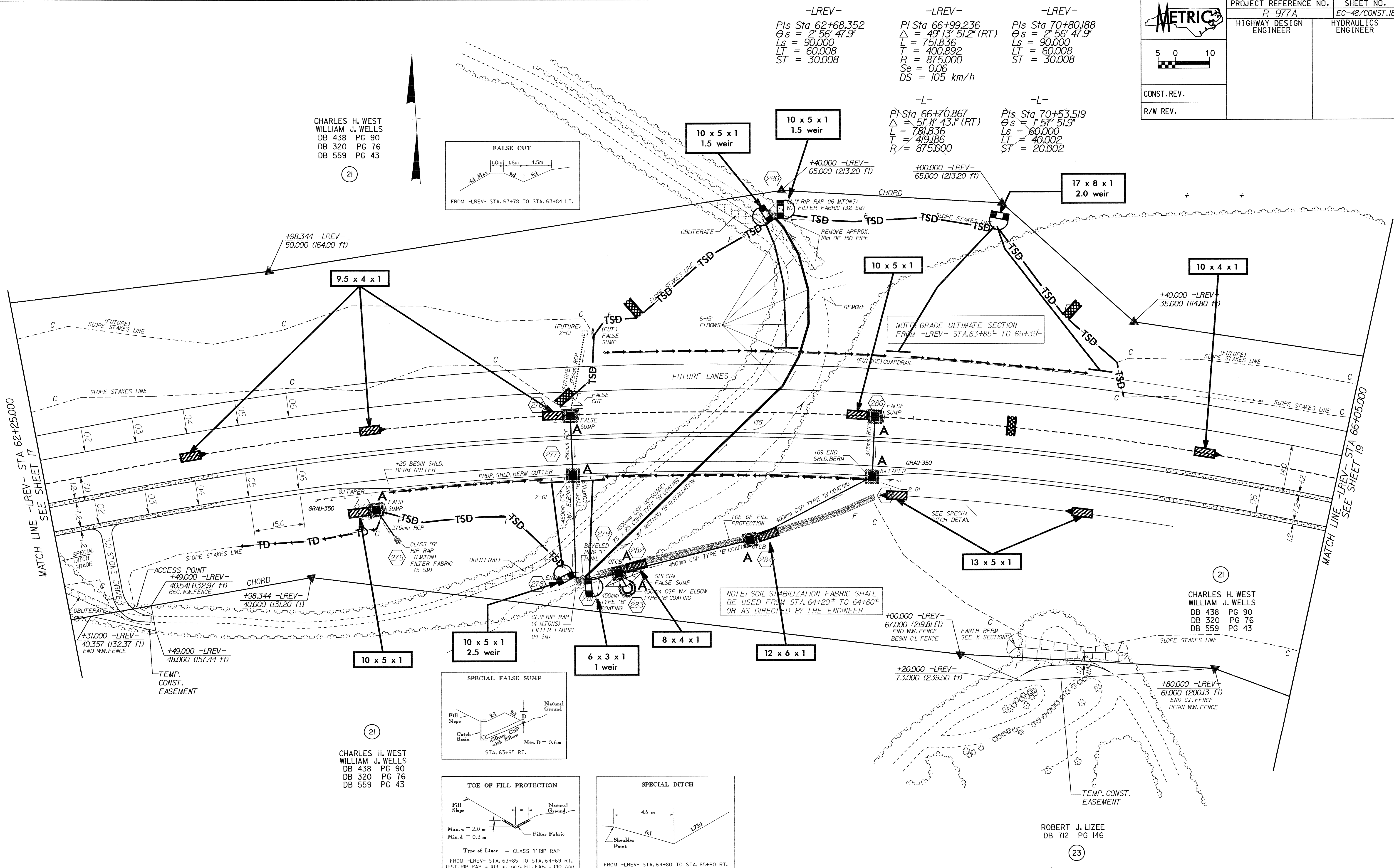
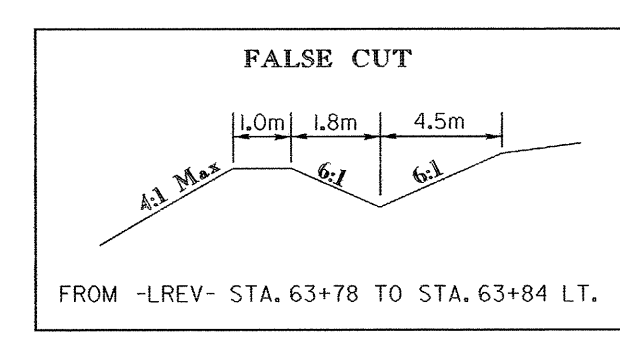
-LREV-
 Pl Sta 66+99.236
 $\Delta = 49^\circ 13' 51.2''$ (RT)
 $L = 751.836$
 $T = 400.892$
 $R = 875.000$
 $Se = 0.06$
 $DS = 105 \text{ km/h}$

-LREV-
 Pls Sta 70+80.188
 $\theta_s = 2^\circ 56' 47.9''$
 $L_s = 90.000$
 $LT = 60.008$
 $ST = 30.008$

-L-
 Pl Sta 66+70.867
 $\Delta = 51^\circ 11' 43.1''$ (RT)
 $L = 781.836$
 $T = 419.186$
 $R = 875.000$

-L-
 Pls Sta 70+53.519
 $\theta_s = 1^\circ 57' 51.9''$
 $L_s = 60.000$
 $LT = 40.002$
 $ST = 20.002$

CHARLES H. WEST
 WILLIAM J. WELLS
 DB 438 PG 90
 DB 320 PG 76
 DB 559 PG 43



CHARLES H. WEST
 WILLIAM J. WELLS
 DB 438 PG 90
 DB 320 PG 76
 DB 559 PG 43

CHARLES H. WEST
 WILLIAM J. WELLS
 DB 438 PG 90
 DB 320 PG 76
 DB 559 PG 43

ROBERT J. LIZEE
 DB 712 PG 146

SEE SHEET 44 FOR -LREV- PROFILE
 SEE PROFILES FOR DITCH GRADES