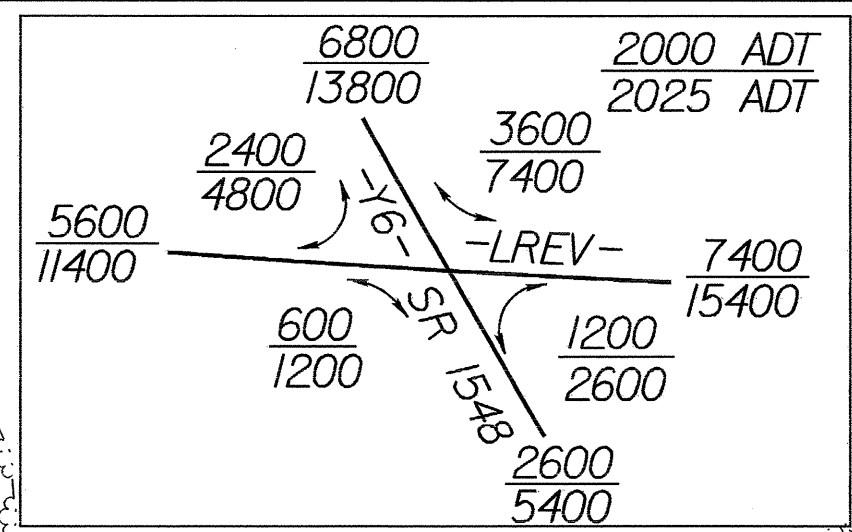
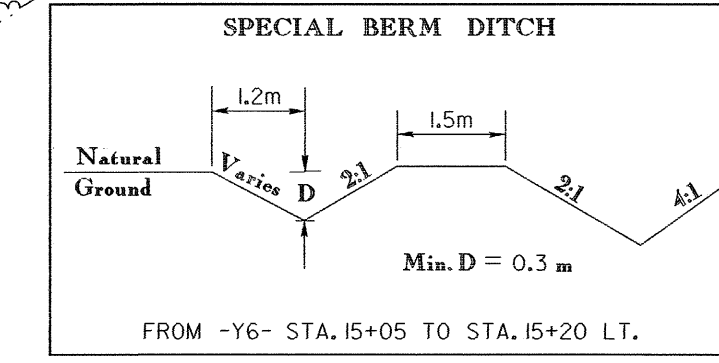


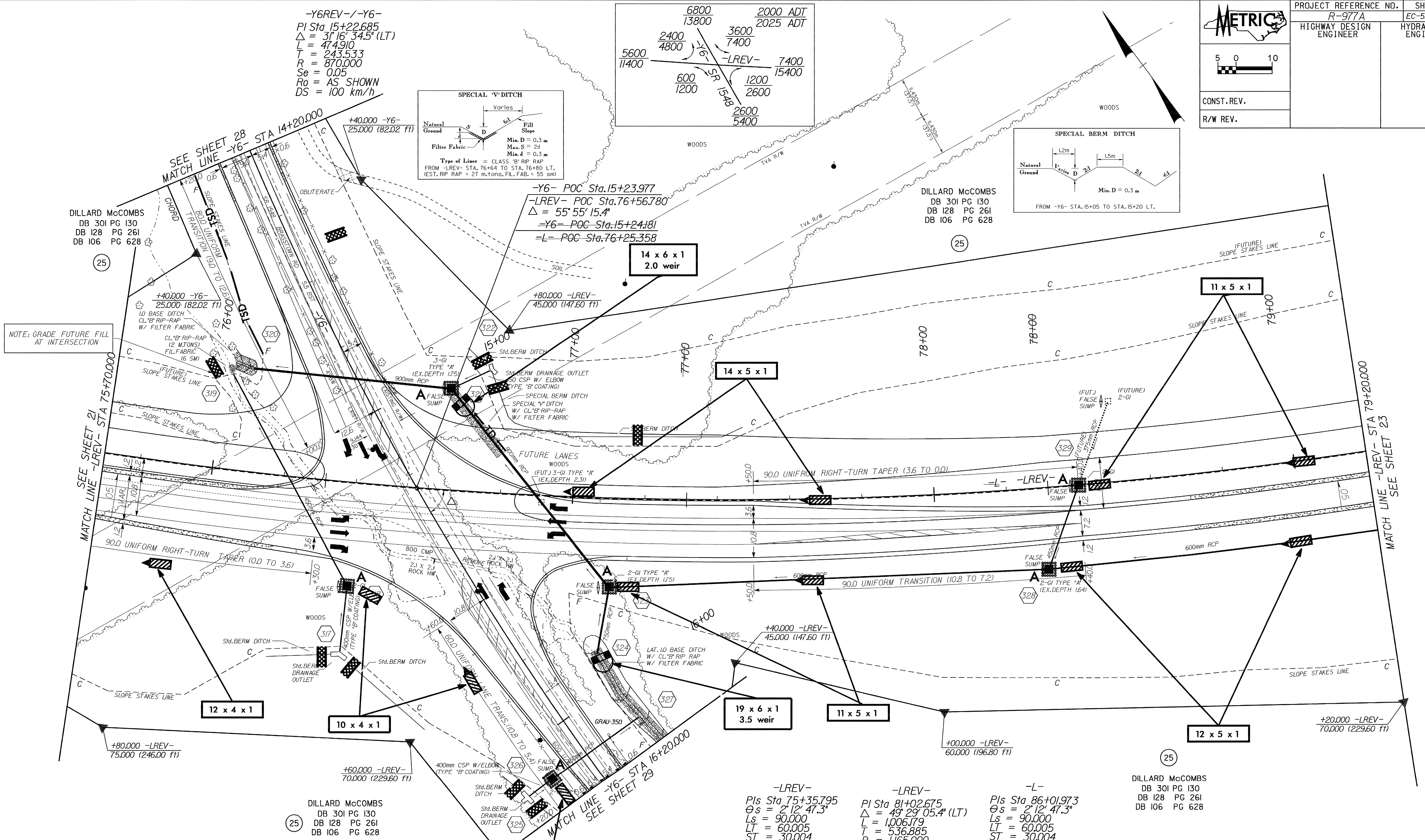
-Y6REV-/-Y6-
 PI Sta. 15+22.685
 $\Delta = 31^{\circ}16'34.5"$ (LT)
 $L = 474.910$
 $T = 243.533$
 $R = 870.000$
 $Se = 0.05$
 $R_0 = AS SHOWN$
 $DS = 100 \text{ km/h}$



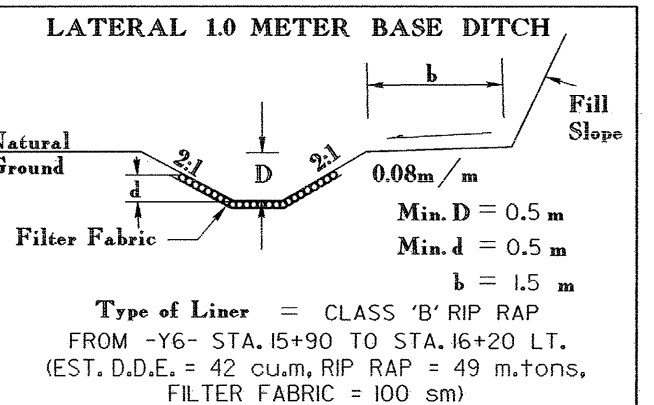
SPECIAL V-DITCH
 Varies
 Natural Ground
 Fill Slope
 Filter Fabric
 Min. D = 0.3 m
 Max. S = 2:1
 Min. d = 0.3 m
 Type of Liner = CLASS 'B' RIP RAP
 FROM -LREV- STA. 76+64 TO STA. 76+80 LT.
 (EST. RIP RAP = 27 m.tons, FIL. FAB. = 55 sm)



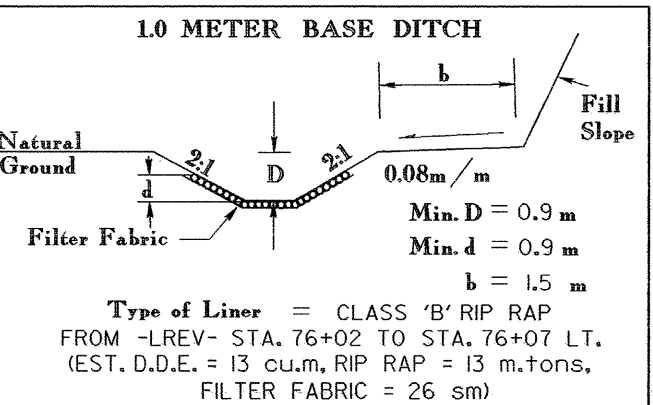
SPECIAL BERM DITCH
 Natural Ground
 Fill Slope
 Filter Fabric
 Min. D = 0.3 m
 FROM -Y6- STA. 15+05 TO STA. 15+20 LT.



NOTE: GRADE FUTURE FILL AT INTERSECTION



LATERAL 1.0 METER BASE DITCH
 Natural Ground
 Fill Slope
 Filter Fabric
 Min. D = 0.5 m
 Min. d = 0.5 m
 $b = 1.5 \text{ m}$
 Type of Liner = CLASS 'B' RIP RAP
 FROM -Y6- STA. 15+90 TO STA. 16+20 LT.
 (EST. D.D.E. = 42 cu.m, RIP RAP = 49 m.tons, FILTER FABRIC = 100 sm)



1.0 METER BASE DITCH
 Natural Ground
 Fill Slope
 Filter Fabric
 Min. D = 0.9 m
 Min. d = 0.9 m
 $b = 1.5 \text{ m}$
 Type of Liner = CLASS 'B' RIP RAP
 FROM -LREV- STA. 76+02 TO STA. 76+07 LT.
 (EST. D.D.E. = 13 cu.m, RIP RAP = 13 m.tons, FILTER FABRIC = 26 sm)

-LREV-
 PIs Sta 75+35.795
 $\theta_s = 2^{\circ}12'47.3"$
 $L_s = 90.000$
 $LT = 60.005$
 $ST = 30.004$

-LREV-
 PIs Sta 81+02.675
 $\Delta = 49^{\circ}29'05.4"$ (LT)
 $L = 1,006.179$
 $T = 536.885$
 $R = 1,165.000$
 $Se = 0.05$
 $DS = 105 \text{ km/h}$

-L-
 PIs Sta 86+01.973
 $\theta_s = 2^{\circ}12'47.3"$
 $L_s = 90.000$
 $LT = 60.005$
 $ST = 30.004$

-L-
 PIs Sta 74+99.317
 $\theta_s = 1^{\circ}28'31.5"$
 $L_s = 60.000$
 $LT = 40.001$
 $ST = 20.001$

-L-
 PIs Sta 80+74.497
 $\Delta = 50^{\circ}57'36.9"$ (LT)
 $L = 1,036.179$
 $T = 555.181$
 $R = 1,165.000$

-L-
 PIs Sta 85+75.496
 $\theta_s = 1^{\circ}28'31.5"$
 $L_s = 60.000$
 $LT = 40.001$
 $ST = 20.001$

SEE SHEET 47 FOR -LREV- PROFILE
 SEE SHEET 57 FOR -Y6- PROFILE
 SEE PROFILES FOR DITCH GRADES
 SEE SHEET 2-H FOR INTERSECTION DETAILS

DILLARD McCOMBS
 DB 301 PG 130
 DB 128 PG 261
 DB 106 PG 628

DILLARD McCOMBS
 DB 301 PG 130
 DB 128 PG 261
 DB 106 PG 628