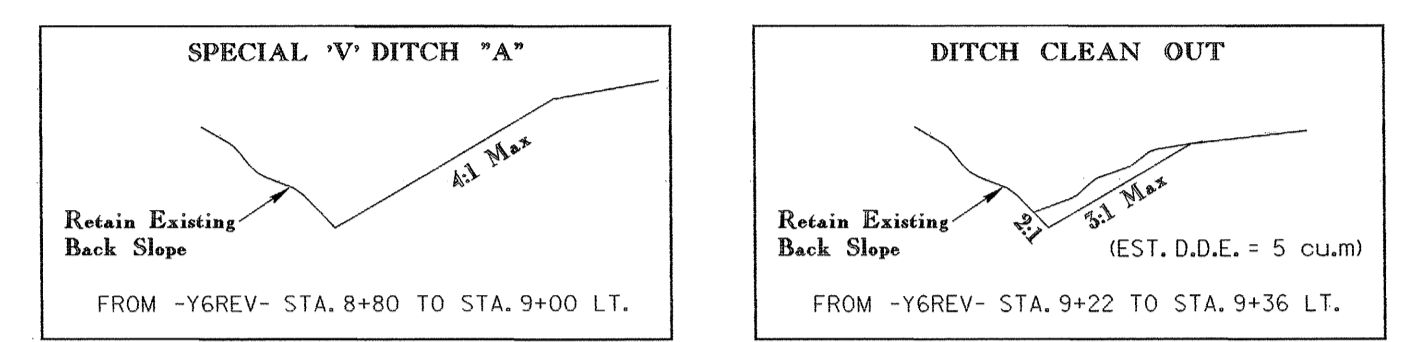


-Y7-	-Y7-	-Y7-	-Y6-	-Y6REV-
PIs Sta 74+27.218	PI Sta 75+07.897	PIs Sta 75+87.425	PI Sta 10+37.875	PI Sta 9+40.261
$\theta_s = 5^{\circ}00'00.0''$	$\Delta = 19^{\circ}36'51.0''$ (LT)	$\theta_s = 5^{\circ}00'00.0''$	$\Delta = 65^{\circ}04'47.0''$ (LT)	$\Delta = 1^{\circ}00'12.9''$ (RT)
Ls = 60.939	L = 119.568	Ls = 60.939	L = 36.066	L = 122.434
LT = 40.656	T = 60.375	LT = 40.656	T = 20.260	T = 61.219
ST = 20.335	R = 349.276	ST = 20.335	R = 31.752	R = 6,990.000
	Se = EXIST.			Se = NC
				Ro = 65.000
				DS = 100 km/h



-Y7REV-

PI Sta 75+76.124

$\Delta = 40^{\circ}36'36.8''$ (RT)

L = 70.878

T = 37.001

R = 100.000

Se = 0.04

Ro = AS SHOWN

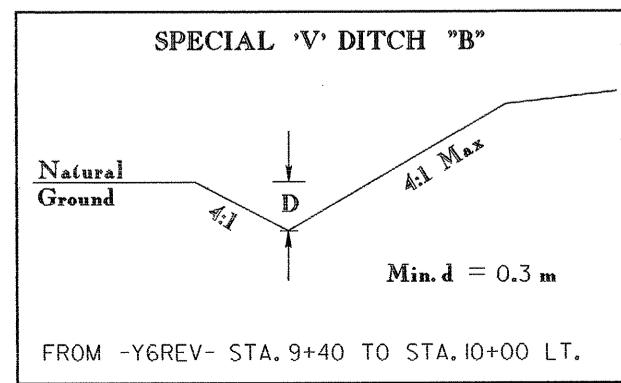
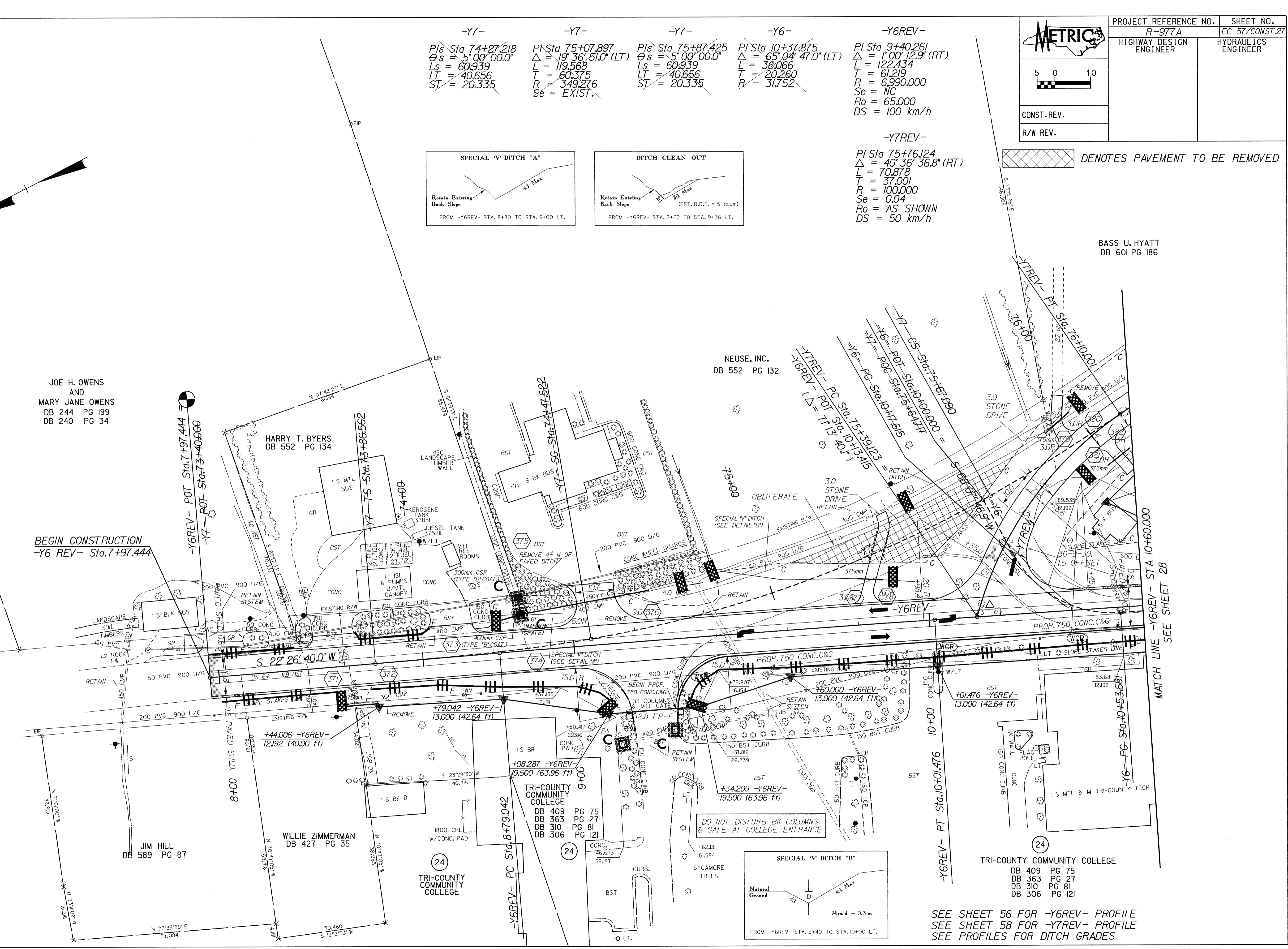
DS = 50 km/h

 DENOTES PAVEMENT TO BE REMOVED

BASS U. HYATT
DB 601 PG 186

JOE H. OWENS
AND
MARY JANE OWENS
DB 244 PG 199
DB 240 PG 34

BEGIN CONSTRUCTION
-Y6 REV- Sta. 7+97.444



SEE SHEET 56 FOR -Y6REV- PROFILE
SEE SHEET 58 FOR -Y7REV- PROFILE
SEE PROFILES FOR DITCH GRADES

MATCH LINE -Y6REV- STA 10+60.000
SEE SHEET 28

TRI-COUNTY COMMUNITY COLLEGE
DB 409 PG 75
DB 363 PG 27
DB 310 PG 81
DB 306 PG 121