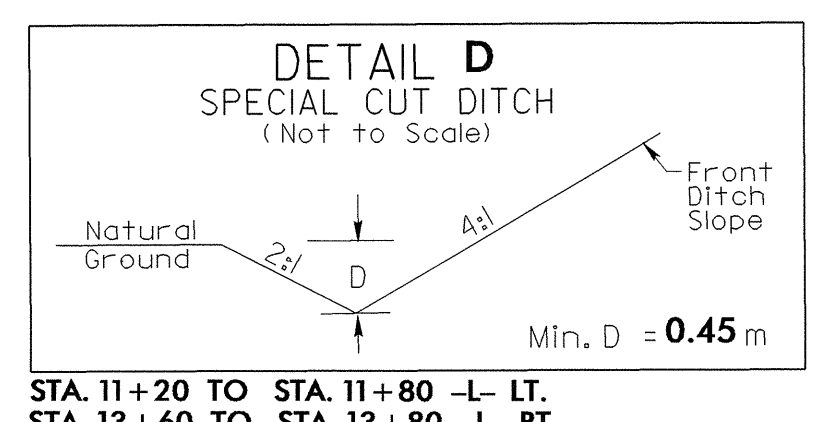
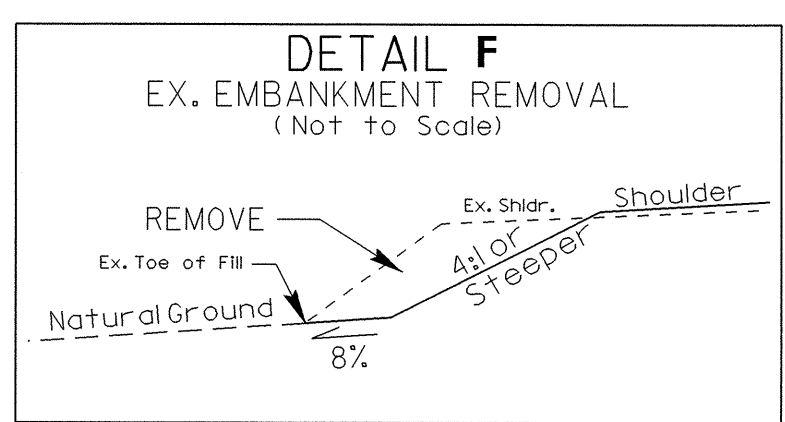
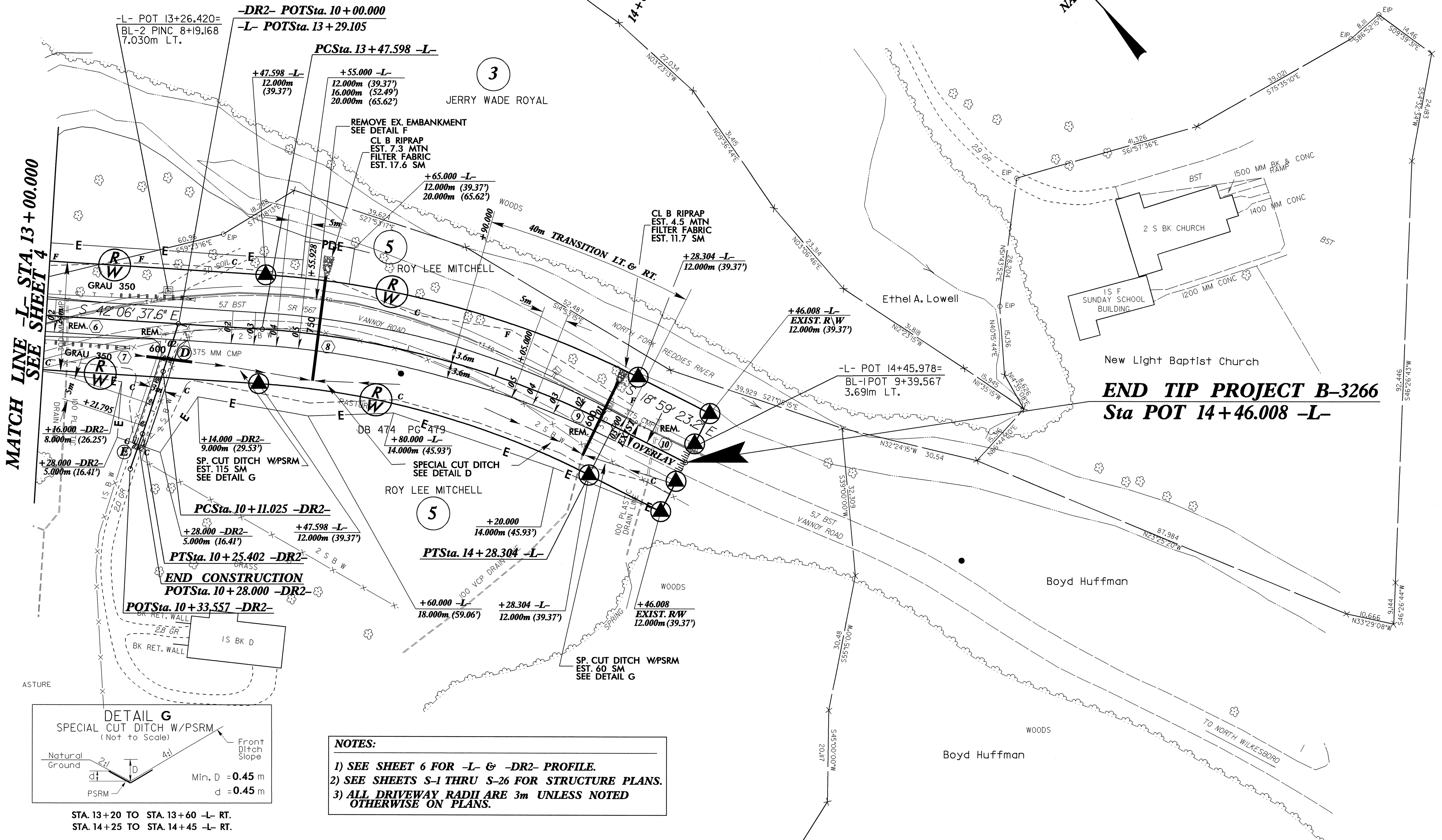


★ DESIGN EXCEPTION REQUIRED TO REDUCE DESIGN SPEED FROM 100km/h TO 50km/h.



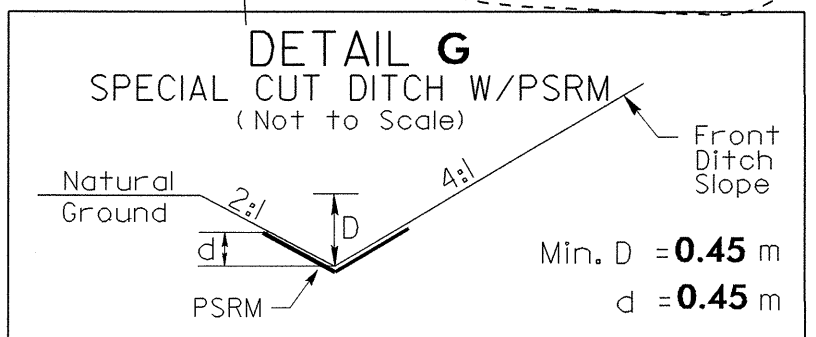
**-L-**  
 PI Sta 13+88.508  
 $\Delta = 23^\circ 07' 14.5''$  (RT)  
 $L = 80.706$   
 $T = 40.910$   
 $R = 200.000$   
 $RO = \text{SEE PLANS}$   
 $SE = 0.05$

**-DR2-**  
 PI Sta 10+18.214  
 $\Delta = 1^\circ 38' 50.8''$  (RT)  
 $L = 14.377$   
 $T = 7.189$   
 $R = 500.000$   
 $RO = \text{SEE PLANS}$   
 $SE = \text{SEE PLANS}$   
 $\textcircled{D} S 6^\circ 48' 51.9'' W$   
 $\textcircled{E} S 63^\circ 27' 42.5'' W$



MATCH LINE -L- STA. 13+00.000 SEE SHEET 4

**END TIP PROJECT B-3266**  
Sta POT 14+46.008 -L-



- NOTES:**
- 1) SEE SHEET 6 FOR -L- & -DR2- PROFILE.
  - 2) SEE SHEETS S-1 THRU S-26 FOR STRUCTURE PLANS.
  - 3) ALL DRIVEWAY RADII ARE 3m UNLESS NOTED OTHERWISE ON PLANS.