

5/14/99

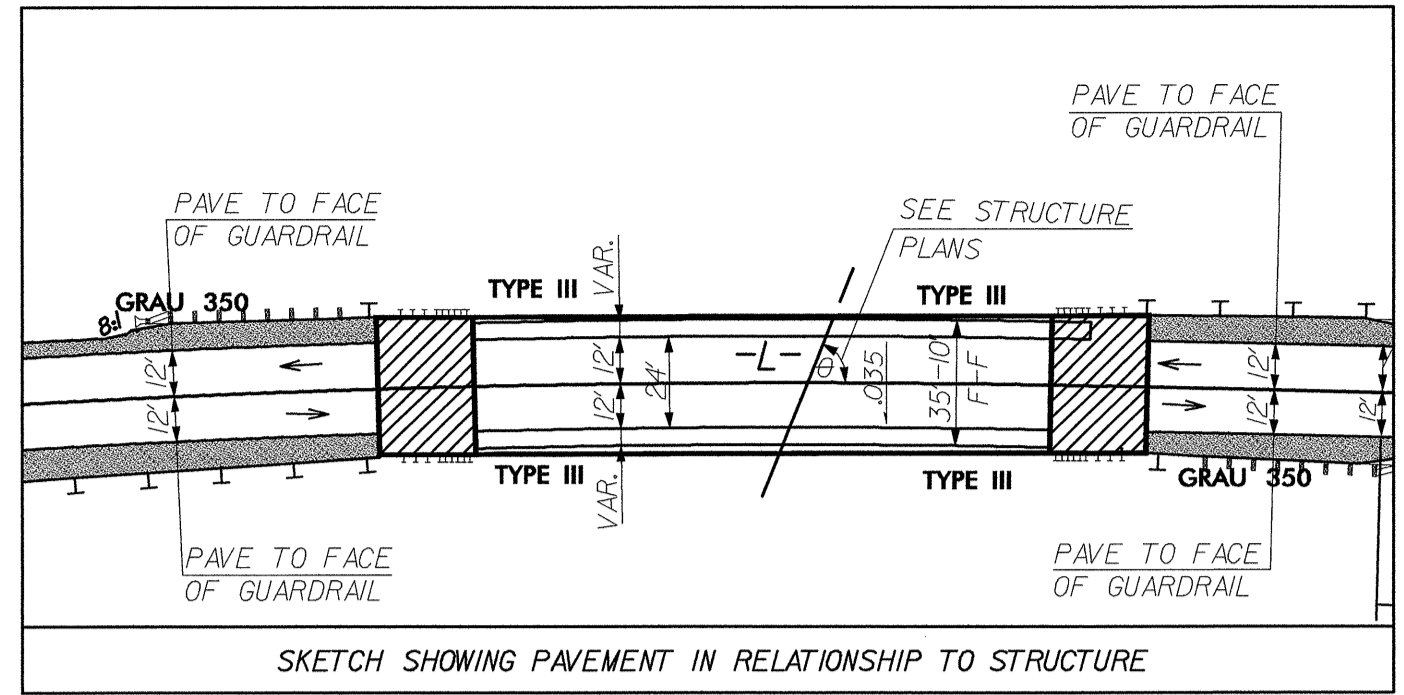
DATUM DESCRIPTION
 THE LOCALIZED COORDINATE SYSTEM DEVELOPED FOR THIS PROJECT IS BASED ON THE STATE PLANE COORDINATES ESTABLISHED BY NCDDOT FOR MONUMENT "B3703-1" WITH NAD 1983 STATE PLANE GRID COORDINATES OF NORTHING: 690589.8255(11) EASTING: 2077980.3432(11) THE AVERAGE COMBINED GRID FACTOR USED ON THIS PROJECT (GROUND TO GRID) IS: 0.99988555 THE N.C. LAMBERT GRID BEARING AND LOCALIZED HORIZONTAL GROUND DISTANCE FROM "B3703-1" TO -L- STATION 14+80.00 IS S 36° 41' 37.81" W 2615.0552 FT ALL LINEAR DIMENSIONS ARE LOCALIZED HORIZONTAL DISTANCES VERTICAL DATUM USED IS NAVD88

-L-

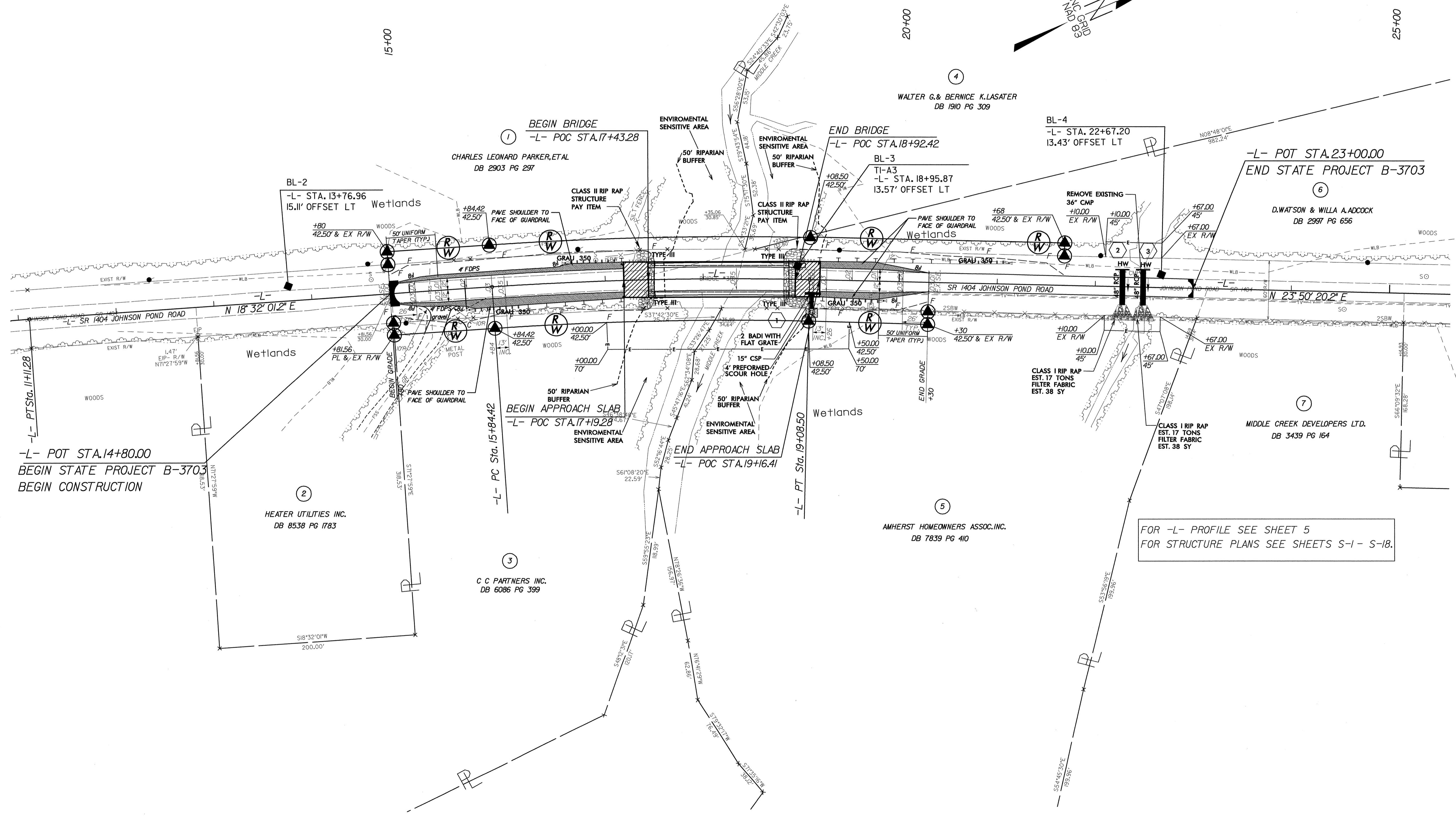
PI Sta 10+69.25	PI Sta 17+46.57
$\Delta = 4' 49" 06.5" (RT)$	$\Delta = 5' 18" 19.0" (RT)$
$D = 5' 43" 46.5"$	$D = 1' 38" 13.3"$
$L = 84.10'$	$L = 324.08'$
$T = 42.07'$	$T = 162.16'$
$R = 1,000.00'$	$R = 3,500.00'$

RUNOFF = SEE PLANS
 SE = 0.35*
 DESIGN SPEED = 50 mph

*SE = 0.35 USED DUE TO DRAINAGE SPREAD ACROSS BRIDGE.



PROJECT REFERENCE NO. B-3703	SHEET NO. 4
RAW SHEET NO.	
ROADWAY DESIGN PROFESSIONAL SEAL 2295	HYDRAULICS ENGINEER PROFESSIONAL SEAL 1015



FOR -L- PROFILE SEE SHEET 5
 FOR STRUCTURE PLANS SEE SHEETS S-1 - S-18.